

NOVEMBER 2013



WestConnex enabling works – airport east precinct

Roads and Maritime Services is planning to upgrade roads east of the airport and remove the General Holmes Drive rail level crossing. This will improve traffic flow and access to the airport, Port Botany and, in the future, the WestConnex motorway.

The strategic concept design for the proposed upgrade is on display for community comment until **Friday 13 December 2013**.

Background

Sydney Kingsford Smith Airport and Port Botany are two of Australia's most important international gateways. The roads around the airport and Port Botany are becoming increasingly congested due to rising numbers of passenger and freight vehicles. This proposal will support the development of the WestConnex motorway, which will improve access between this area and Western Sydney.

The proposal is consistent with the State Infrastructure Strategy, Long Term Transport Master Plan and draft Airport Master Plan.

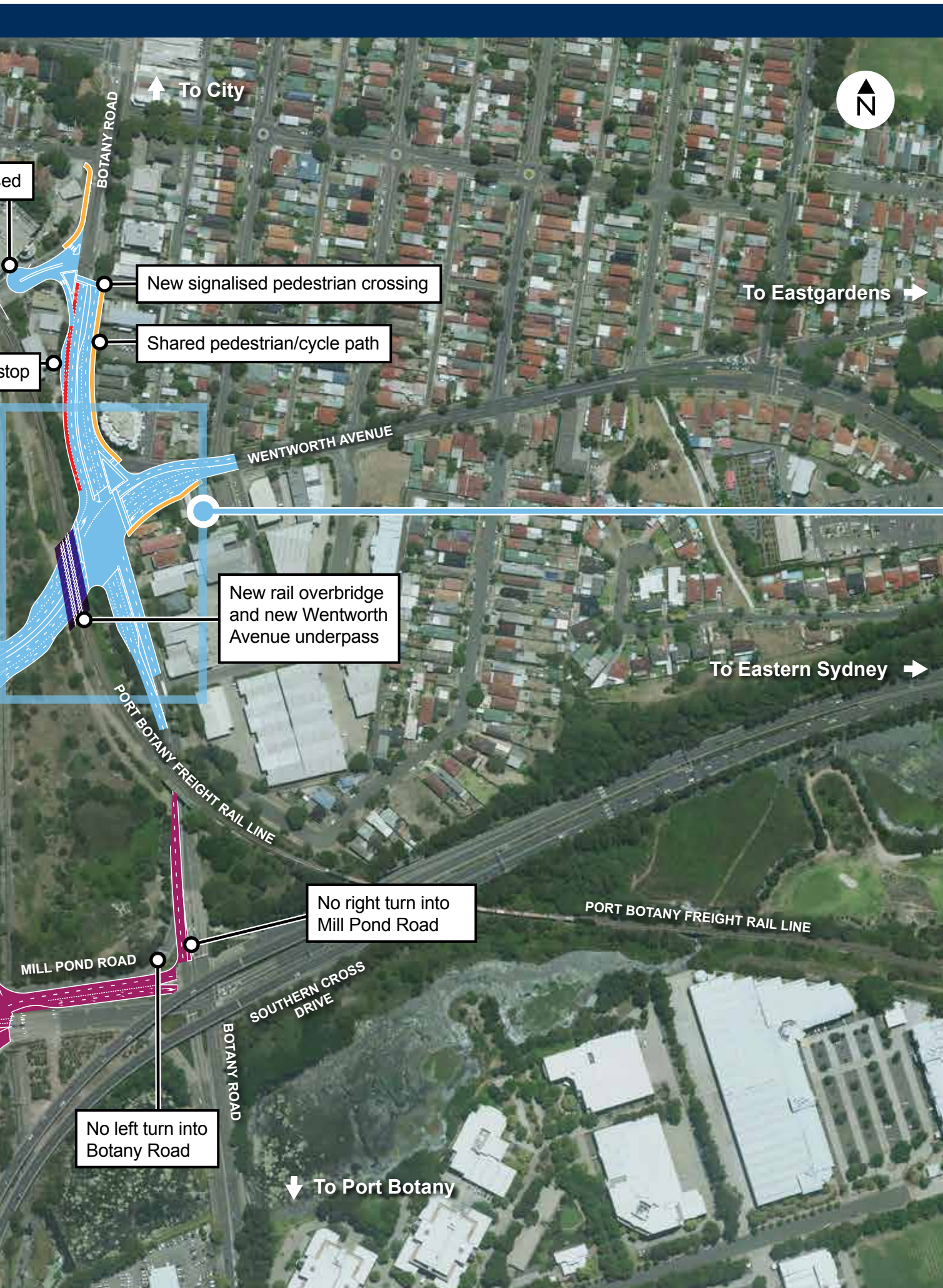
A number of options to support future growth, improve access, reduce congestion and improve the movement of freight have been considered.

The current proposal has been assessed as best meeting the needs, with the least impacts. For more information on the assessment of the options, see the proposal report at www.rms.nsw.gov.au/roadprojects/AirportEast or contact the project team.

Have your say! See inside for more details

WestConnex enabling works, airport east precinct





↑ To City



New signalised pedestrian crossing

Shared pedestrian/cycle path

To Eastgardens →

WENTWORTH AVENUE

New rail overbridge and new Wentworth Avenue underpass

To Eastern Sydney →

PORT BOTANY FREIGHT RAIL LINE

No right turn into Mill Pond Road

PORT BOTANY FREIGHT RAIL LINE

MILL POND ROAD

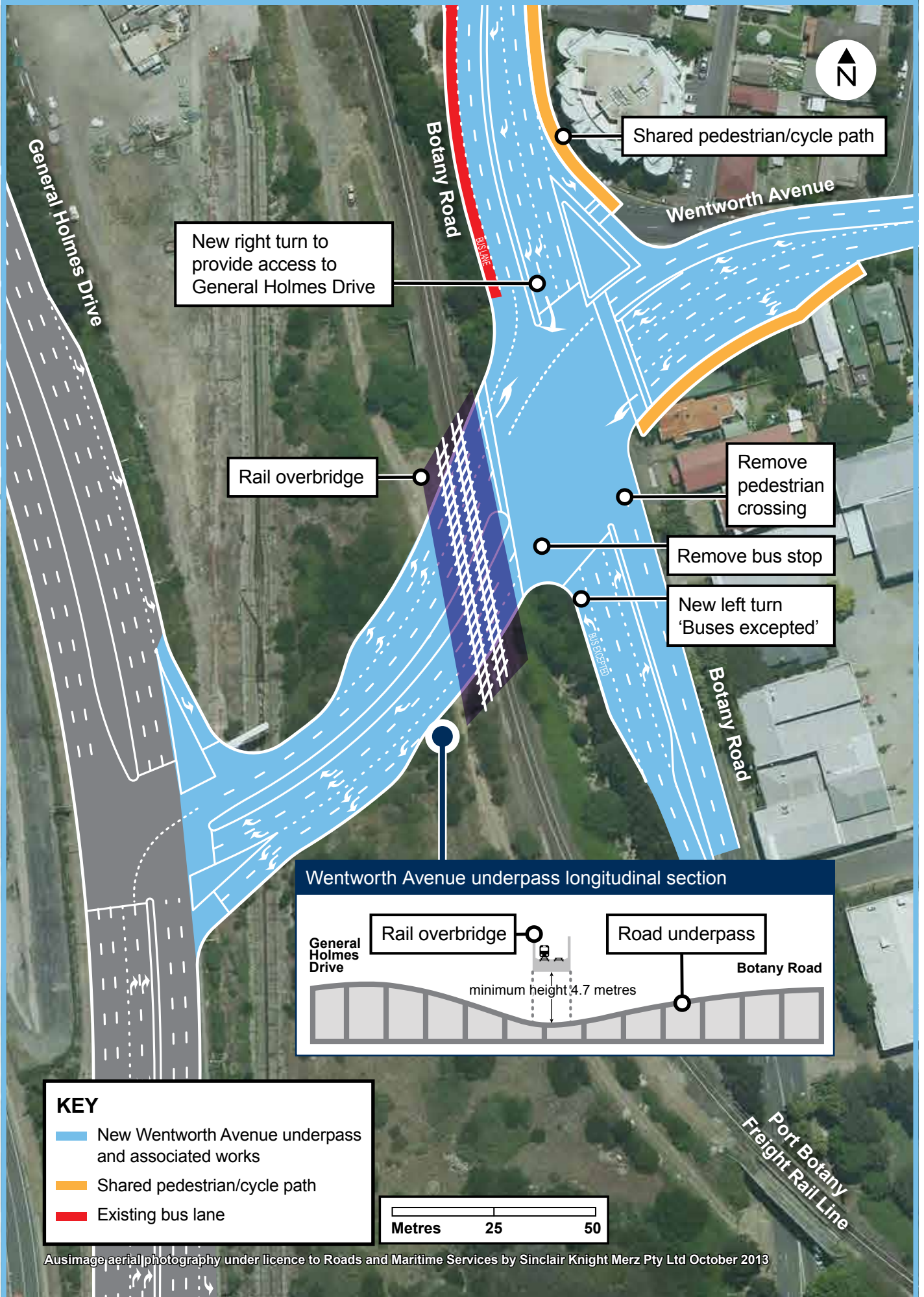
SOUTHERN CROSS DRIVE

No left turn into Botany Road

BOTANY ROAD

↓ To Port Botany

Wentworth Avenue intersection



Key features and benefits

Key features and benefits of the proposal are:

- Replace the General Holmes Drive rail level crossing with a road underpass that links General Holmes Drive, Botany Road and Wentworth Avenue to improve the movement of rail freight and improve access to the airport, Mascot and the eastern suburbs.
- Improvements to the Mill Pond Road intersections with General Holmes Drive and Botany Road to support future growth and access to the airport.
- Widen Joyce Drive and General Holmes Drive between O’Riordan Street and Mill Pond Road to three lanes in each direction to improve traffic flow around the airport and to Port Botany.

Community involvement

Roads and Maritime recognises the importance of involving the community in the development of this proposal. Feedback received will be considered and addressed in the community issues report which will be available at www.rms.nsw.gov.au/roadprojects/AirportEast or on request. Further opportunity for the community to comment on the proposal will be available with the display of the concept design and the environmental impact assessment.

What happens next?



General Holmes Drive railway level crossing

Have your say

Have your say

Have your say on the proposal to upgrade roads east of the airport and remove the General Holmes Drive rail level crossing. Please send written comments by **Friday 13 December 2013**.

Email AirportEast@rms.nsw.gov.au

Mail Airport East
Roads and Maritime Services
PO Box 973
Parramatta CBD NSW 2124

View www.rms.nsw.gov.au/roadprojects/AirportEast

Call Jim Campbell
Project Development Manager
1300 862 844

Community information sessions

Visit one of the community information sessions to discuss the project with the project team

- **Saturday 23 November 2013**
drop in any time between 10am and 1pm
- **Thursday 28 November 2013**
drop in any time between 5pm and 9pm

Mascot Public School

Corner of King Street and Botany Road, Mascot
(entrance off King Street)



Translating and Interpreting Service

If you need an interpreter, please call the Translating and Interpreting Service (TIS National) on **131 450** and ask them to telephone Roads and Maritime Services on **1300 862 844**.

Arabic

إذا كنتم بحاجة إلى مترجم، الرجاء الاتصال بخدمة الترجمة الخطية والشفهية (TIS National) على الرقم **131 450**، والطلب منهم الاتصال بوكالتكم على الرقم **1300 862 844**.

Cantonese

若你需要口譯員，請致電 **131 450** 聯絡翻譯和口譯服務署 (TIS National)，要求他們致電 **1300 862 844** 聯絡 Roads and Maritime Services。

Mandarin

如果你需要口译员，请致电 **131 450** 联系翻译和口译服务署 (TIS National)，要求他们致电 **1300 862 844** 联系 Roads and Maritime Services。

Greek

Αν χρειάζεστε διερμηνέα, παρακαλείστε να τηλεφωνήσετε στην Υπηρεσία Μετάφρασης και Διερμηνείας (Εθνική Υπηρεσία TIS) στο **131 450** και ζητήστε να τηλεφωνήσουν Roads and Maritime Services στο **1300 862 844**.

Italian

Se desiderate l'assistenza di un interprete, prego telefonare al Servizio Interpreti e Traduttori (TIS National) al **131 450** chiedendo di contattare Roads and Maritime Services al **1300 862 844**.

Korean

통역사가 필요하시면 번역통역서비스 (TIS National)에 **131 450** 으로 연락하여 이들에게 **1300 862 844** 번으로 Roads and Maritime Services 에 전화하도록 요청하십시오.

Vietnamese

Nếu cần thông ngôn viên, xin quý vị gọi cho Dịch Vụ Thông Phiên Dịch (TIS Toàn Quốc) qua số **131 450** và nhờ họ gọi cho Roads and Maritime Services qua số **1300 862 844**.



Roads and Maritime Services

Privacy: Roads and Maritime Services is subject to the *Privacy and Personal Information Protection Act 1998* ("PPIP Act") which requires that we comply with the Information Privacy Principles set out in the PPIP Act.

All information in correspondence is collected for the sole purpose of assisting in the assessment of this proposal. The information received, including names and addresses of respondents, may be published in subsequent documents unless a clear indication is given in the correspondence that all or part of that information is not to be published. Otherwise Roads and Maritime will only disclose your personal information, without your consent, if authorised by the law. Your personal information will be held by Roads and Maritime at 27 Argyle Street, Parramatta NSW 2150. You have the right to access and correct the information if you believe that it is incorrect.