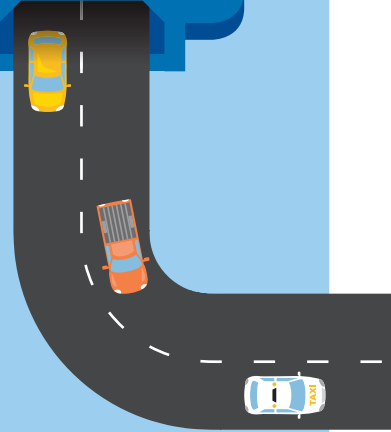




August 2020



Investigation work

Sydney Park Road and Princes Highway in St Peters from 9 August 2020

We're planning improvements to pedestrian and cycling facilities on Sydney Park Road and Princes Highway in St Peters.

To help us with our plans we will carry out surveys and investigations to understand ground conditions from **Sunday 9 August 2020**.

This work involves cutting and digging small sections of the road and footpath to inspect road pavement and ground conditions then reinstating the road when we have finished. Our work area is shown on the map over the page.



Our work schedule

We'll work at night to minimise impact on traffic and to keep our workers and community safe.

Our night shift work hours are **Sunday to Thursday 8pm to 5am**. No work will be carried out on public holidays.

We expect the work to take up to six night shifts to complete, spread out over a two week period (weather permitting).

How will our work affect you?

Our work involves some noisy activities, including pavement cutting and digging. This noisy work will be completed before midnight. We'll also help to reduce noise by using low noise reversing alarms on all machinery and turning off equipment and vehicles when they are not being used.

Traffic changes and pedestrian access

There will be some temporary lane closures during work shifts which may affect your travel times. Please keep to speed limits, follow signs and directions from our traffic controllers.

For the latest traffic updates:

Call **132 701**

Visit **www.livetraffic.com**

Download the App

Live Traffic NSW



Location of work



Contact our team

Thank you for your patience while we complete this important work. Please contact us if you have any questions.

@ ni@transport.nsw.gov.au

☎ 1800 951 212

✉ Transport for NSW
Network Integration team
Locked Bag 928, North Sydney NSW 2059



131 450

If you need help understanding this information, please contact the Translating and Interpreting Service on 131 450 and ask them to call us on 1800 951 212.

Privacy Transport for NSW is collecting your personal information in connection with Network Integration ("the Program"). In addition to collecting your name and contact details we may collect other information such as your submissions and other communications with us. We will retain and use this information for consultation purposes, including communications and analysis in connection with the Program. We will not disclose your personal information to third parties unless authorised by law and if we include your submissions in any public report we will not identify you. Providing your personal information is voluntary but if you do not provide it we may not include you on our stakeholder database and you might miss further consultation opportunities. Your personal information will be held by us and you can contact us to access or correct it. Please write to us at either ni@transport.nsw.gov.au or Transport for NSW Locked Bag 928, North Sydney NSW 2059