

NOVEMBER 2011

The Northern Road Upgrade

Between the Old Northern Road, Narellan
and Mersey Road, Bringelly

Your comments sought

Roads and Maritime Services (RMS) formerly the Roads and Traffic Authority has commenced planning for the future upgrade of The Northern Road, in conjunction with the development of the South West Growth Centre.

RMS has developed a preliminary concept design to widen the generally two lane road to a four lane divided road between The Old Northern Road, Narellan and Mersey Road, Bringelly.

The proposed concept design is on display for community comment until Friday 16 December 2011. See the back page of this Community Update for display locations and details for a Community Information Session.

Background

The Northern Road upgrade is approximately 14 kilometres long and will be one of the principal road transport arterials within the South West Growth Centre.

There will be significant traffic growth in future years due to residential and commercial development in the South West Growth Centre and nearby areas.

RMS has commenced the upgrade of Camden Valley Way and progressed planning for the future upgrade of Bringelly Road.

In July 2010, RMS displayed an access strategy for the upgrade of The Northern Road between The Old Northern Road and Mersey Road.

The map and diagram inside this Community Update show the proposed concept design for The Northern Road upgrade incorporating changes to the design. These changes are in response to feedback RMS has received through community comments and further planning investigations.



Frequently asked questions about The Northern Road upgrade

Construction

Why isn't the road built before the land is developed? Why can't the upgrade occur sooner?

The timing for construction will largely be determined by the rate of future land releases and the allocation of funding by the Government. Based upon the forecast traffic demand in the south west area. Camden Valley Way and Bringelly Road are expected to be upgraded before The Northern Road. The developer of Oran Park Town Centre is proposing to construct the new intersection at Peter Brock Drive to service Oran Park.

Access and safety

How will upgrading The Northern Road to four lanes affect property access?

There will be a wide median preventing access to the opposite side of the road to meet road safety requirements. Left in / left out access would generally be provided at existing driveways and some side roads. These arrangements would be maintained until the land is redeveloped.

Temporary U-turn facilities are proposed along the route at Marylands Link Road 1, Lowes Creek Link Road, Belmore Road, Greendale Road and Derwent Road. These U-turn facilities would assist with right turn movements until the upgraded intersections are connected to the future road network, as precinct development takes place.

When will the intersections highlighted for closure occur?

Each intersection will be closed when an alternative access route is provided as part of precinct development.

Location of traffic lights and intersections

How were major intersection locations determined?

The major intersections shown in the concept design will provide access for the future precincts whilst maintaining the performance of The Northern Road as a principal transport arterial road.

Flooding

Will this road be flood proof?

The Northern Road has been designed to be flood free for a 1 in 100 year storm event.

Environment

Threatened species may be found along the route. What is RMS doing to protect these?

RMS will undertake an environmental assessment with a view to minimising the impact of any road construction. Discussions will be held with The NSW Office of Environment and Heritage and the Department of Planning and Infrastructure to develop appropriate management strategies.



The Northern Road looking north at Loftus Street intersection.

Benefits

- Increased capacity for future traffic growth.
- Improved safety for motorists by:
 - Constructing new intersections with traffic lights to access precincts.
 - Constructing a central median to separate opposing traffic flows.
 - Constructing turning lanes at intersections.
- Improved safety for cyclists and pedestrians by providing an off-road shared path.
- Improved travel times when future development occurs.
- Access to future South West Growth Centre precincts along The Northern Road.
- Improved access and travel times for road freight in Sydney's South West.
- Bus priority capability at traffic lights.
- Landscaping consistent with other main road upgrades such as Camden Valley Way.

Features of the project

- An upgrade from a generally two lane to a four lane divided road with a wide central median.
- The wide central median will allow for future widening to six lanes, if required in the future.
- A posted speed limit of 80km/h.
- A three metre wide off-road shared pedestrian/cyclist path.
- Two metre wide shoulders.
- Adjustments to public utilities such as gas, electricity and telephone services along the route.
- Designated turning lanes, and bicycle and pedestrian crossing provisions at traffic lights.
- Bus priority capability at traffic lights and indented bus bays.
- Temporary U-turn facilities at selected future precinct link roads.
- Existing properties along The Northern Road would continue to have left in/left out access, until precinct development takes place.

Location map

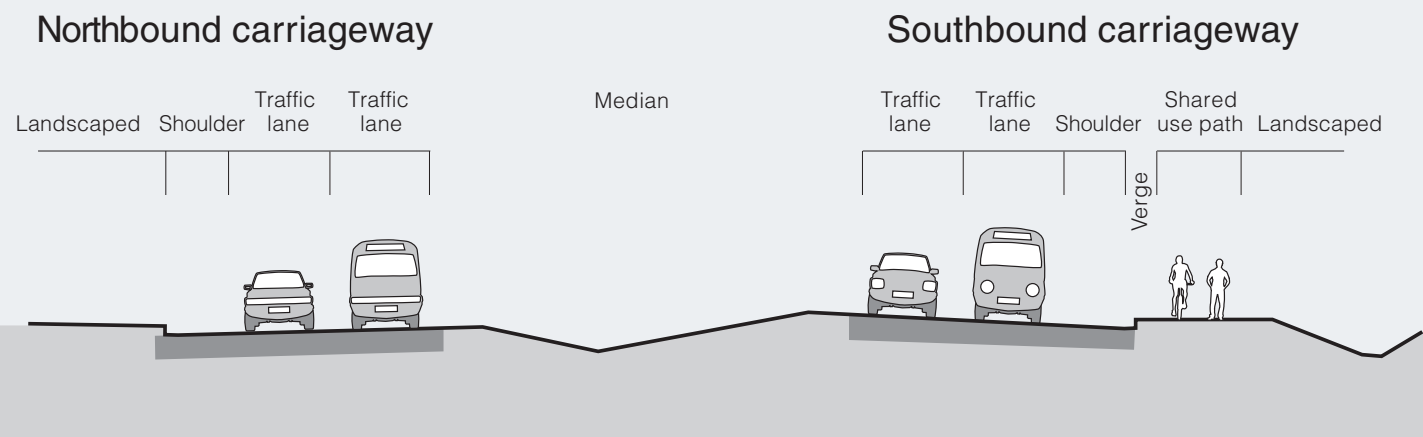


The Northern Road upgrade – The Old Northern Road to Mersey Road – preliminary concept design



- KEY**
- New road pavement
 - Concrete median
 - Landscaped median
 - Bus facilities
 - Shared pedestrian/cyclist path
 - Proposed to be built by developer

Typical cross section of The Northern Road



Changes to the design

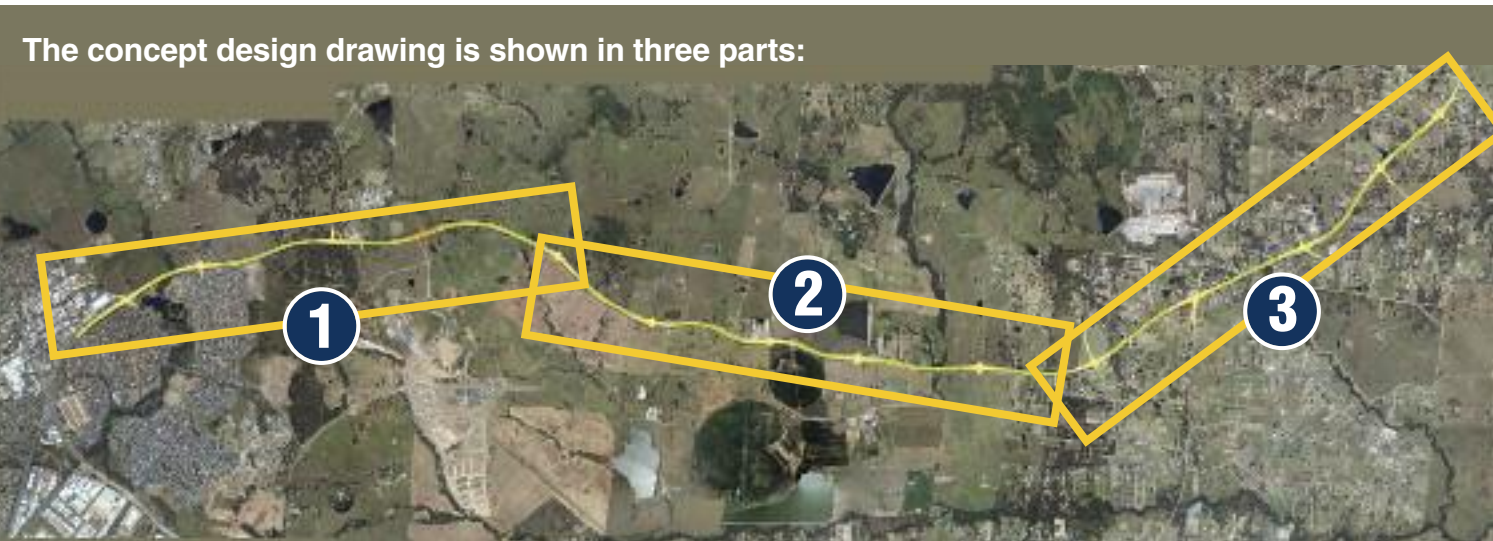
The following changes have been made to the design since the access strategy was displayed in July 2010:

- Maryland Link Road 2 has been shifted approximately 250 metres north.
- Maryland Link Road 3 has been changed from a T-intersection with traffic lights to a four-way intersection with traffic lights.
- U-turn facilities are proposed on Belmore Road and Greendale Road.

This fold out map shows the preliminary concept design and proposed access arrangements along The Northern Road.

The Northern Road preliminary concept design currently proposes 14 signalised intersections along the route, six of them are new intersections. These intersections will provide access to future residential and commercial areas of the South West Growth Centre development precincts.

A typical cross section for The Northern Road upgrade is also shown.



Keep up to date with the latest information on The Northern Road upgrade at www.rta.nsw.gov/roadprojects

What's happening now?

In May 2011, Sinclair Knight Merz (SKM) was engaged by RMS to progress the concept design, planning and environmental studies for The Northern Road upgrade.

Field investigations to help develop the concept design are underway which include survey, geotechnical investigations, flora and fauna studies, noise monitoring as well as examination of heritage items, including those of Aboriginal significance. These investigations are a critical part of planning for the upgrade and property owners' assistance to enable access during these studies is appreciated.

What happens next?

Community comments regarding the preliminary concept design for the upgrade of The Northern Road between The Old Northern Road, Harrington Park and Mersey Road, Bringelly will be considered by RMS.

The concept design will be developed and a review of environmental factors prepared.

The concept design and review of environmental factors will then be displayed for further community comment.



Shopping centre displays

RMS will hold two staffed shopping centre displays at the Harrington Park Plaza, 23 Fairwater Drive, Harrington Park on:

- **Thursday 1 December 2011**
from 2pm to 8pm.
- **Saturday 3 December**
from 10am to 3pm.

Community information session

RMS values your views about the project and will host a community information session on **Saturday 10 December 2011** at:

- **Leppington Progress Hall**
From 10am to 3pm
123 Ingleburn Road, Leppington

Light refreshments will be available on the day.

The RMS project team will be available to answer questions and receive feedback.

A formal presentation will not be given, so please feel free to drop in at any time during this information session.

Display locations

The preliminary concept design is on display until **Friday 16 December 2011** at the following locations:

- **Narellan Library**
Civic Place, corner Queen and Elyard streets, Narellan
Monday and Wednesday from 9.30am to 8pm,
Tuesday, Thursday and Friday from 9.30am to 5pm
Saturday from 9am to 3pm
- **Narellan Motor Registry**
Shop G1, Narellan Town Centre,
326 Camden Valley Way, Narellan
Monday to Friday from 8.30am to 5pm
Saturday from 8.30am to 12pm

Have your say

Please send written comments by **Friday 16 December 2011** to:

The Northern Road Project Team
Roads and Maritime Services
PO Box 164
ST LEONARDS NSW 1590

Or email your comments to:
TheNorthernRoadNSW@GlobalSKM.com

Roads and Maritime Services

Privacy: Roads and Maritime Services ("RMS") is subject to the *Privacy and Personal Information Protection Act 1998* ("PIIP Act") which requires that we comply with the Information Privacy Principles set out in the PIIP Act.

All information in correspondence is collected for the sole purpose of assisting in the assessment of this proposal. The information received, including names and addresses of respondents, may be published in subsequent documents unless a clear indication is given in the correspondence that all or part of that information is not published. Otherwise RMS will only disclose your personal information, without your consent, if authorised by the law. Your personal information will be held by RMS at 27 Argyle Street, Parramatta NSW 2150. You have the right to access and correct the information if you believe that it is incorrect.

Tell us what you think. We have a new website www.rta.nsw.gov.au/roadprojects. We hope this site makes it easier to find the project information you need. We are interested in your feedback. Email us at Project_Customer_Services@rta.nsw.gov.au

For more information contact:

The Northern Road Project Team, Roads and Maritime Services, PO Box 164 ST LEONARDS NSW 1590

T 1800 257 484 (during business hours) | E TheNorthernRoadNSW@GlobalSKM.com

More information is available at www.rmsservices.nsw.gov.au