



Australian Government

BUILDING OUR FUTURE



June 2018

Operating hours for site compounds, The Northern Road upgrade at South Penrith from Thursday 21 June 2018

The Australian and NSW governments are jointly funding this work as part of the \$1.6 billion upgrade of The Northern Road between Narellan and South Penrith.

Roads and Maritime Services is continuing work on The Northern Road upgrade between Glenmore Parkway, Glenmore Park and Jamison Road, South Penrith.

As part of this work, site compounds for the project (see site location maps over the page) have been established at:

- corner of Parker Street and Bringelly Road, Lions Park
- Mazepa Avenue, Mazepa Park.

The site compounds will operate 24 hours a day, seven days a week from **Thursday 21 June 2018** until completion of the project in 2020.

Activities which will take place at the sites include:

- truck movements, including vehicles entering and exiting the site gates on Mazepa Avenue and Parker Street
- stockpiling material
- storage of machinery and equipment.

How will the work affect you?

Our work may be noisy at times, but every effort will be made to minimise the impact on residents. We will notify and consult with residents on specific work hours before the start of any high impact or noisy work.

Traffic changes

Traffic controllers may be on site to help work vehicles safely enter and exit the construction gates on Mazepa Avenue and Parker Street. As a result, there may sometimes be short delays to traffic.

Please keep to speed limits and follow the direction of traffic controllers and signs. For the latest traffic updates, you can call 132 701, visit livetraffic.com or download the Live Traffic NSW App.

Contact

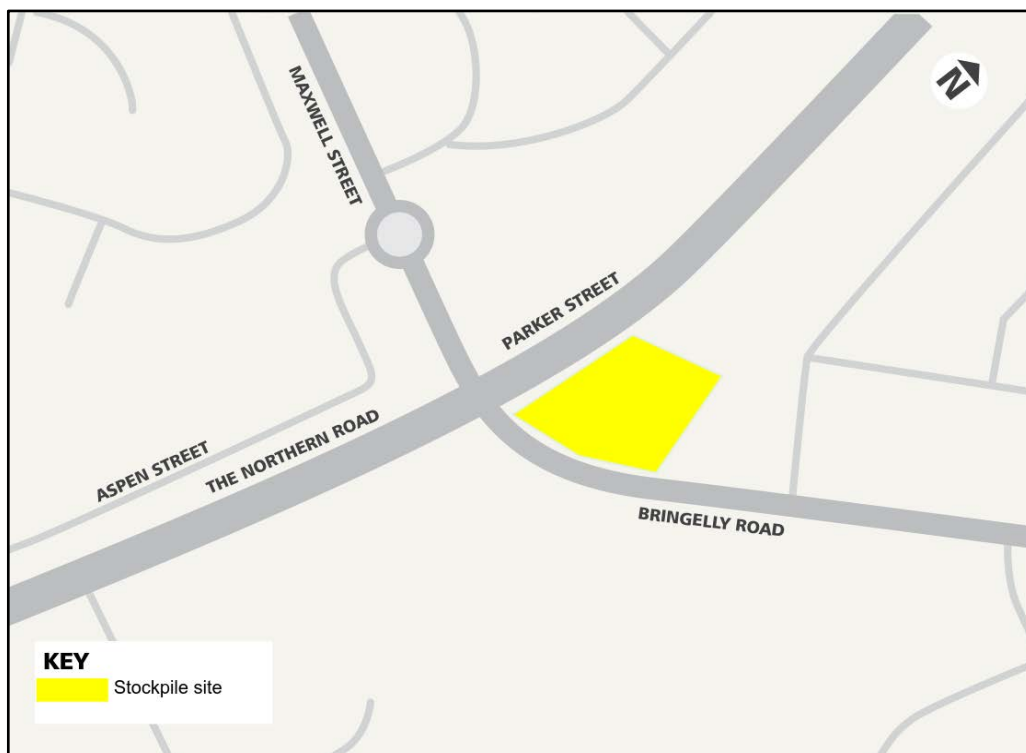
Please contact our delivery partner Lendlease on 1800 870 665 or tnr.community@lendlease.com if you have any questions or complaints related to this activity.

Location of site compounds

Mazepa Park (Mazepa Avenue, South Penrith)



Lions Park (Corner Parker Street and Bringelly Road, South Penrith)



If you need help understanding this information, please contact the Translating and Interpreting Service on 131 450 and ask them to call us on 1800 870 665