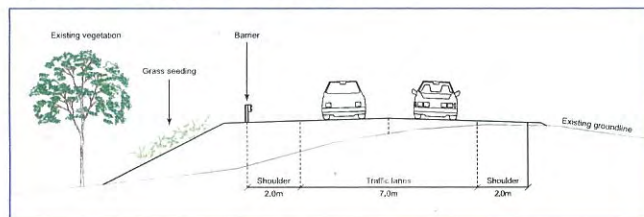


Waterfall Way Pacific Highway to Connells Creek Upgrade

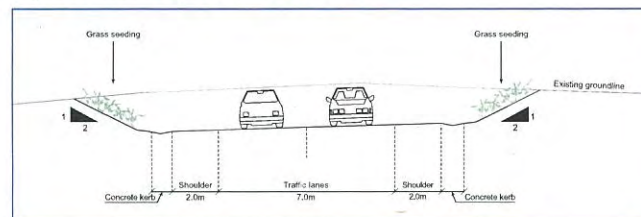
Option B



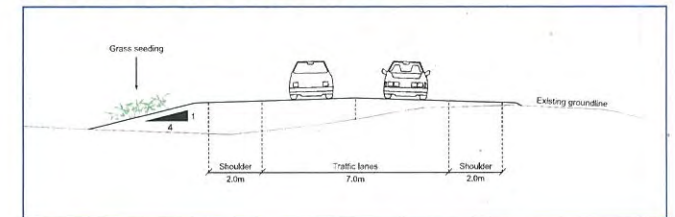
Option B: Proposed section 1



Option B: Proposed section 2



Option B: Proposed section 3





Transport
Roads & Maritime
Services

ROADS AND MARITIME SERVICES

BELLINGEN SHIRE

MR76 WATERFALL WAY

PACIFIC HIGHWAY TO CONNELLS CREEK

0.745KM TO 3.490KM WEST OF PACIFIC HIGHWAY

VOLUME 1

CONCEPT DESIGN - OPTION B

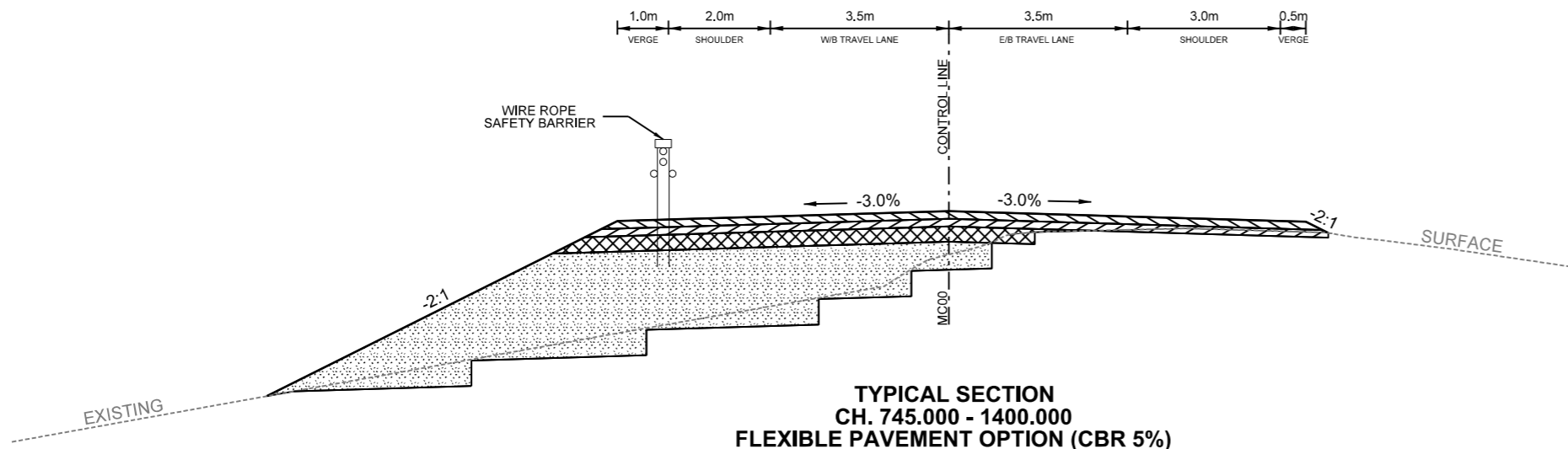


LOCALITY SKETCH
NOT TO SCALE

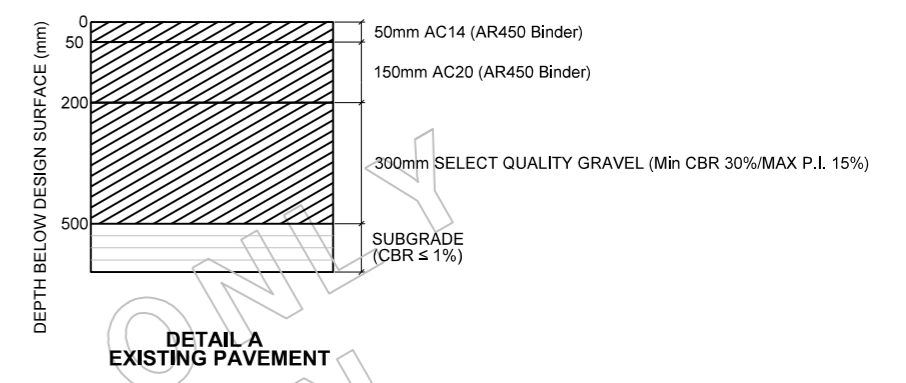
PREPARED BY
PROJECT DELIVERY
ENGINEERING TECHNOLOGY
ASSET MAINTENANCE

PRODUCED: 19/04/2013 AT 12:30:50 PM USER: gereskor
FILE PATH: K:\PROJECTS\76_WATERFALL_WAY\MR76 Pacific Highway to Connells Creek\Drawings\Concept\Option B\01_COVER.dgn
PLOT DRIVER: c:\data\Bentley\Workspace\Standards\plotdrv\PDF-Layers.plt
PEN TABLE: c:\data\Bentley\Workspace\Standards\table\pen\TEXT - SUBSTITUTIONS FOR_COLOUR.tbl

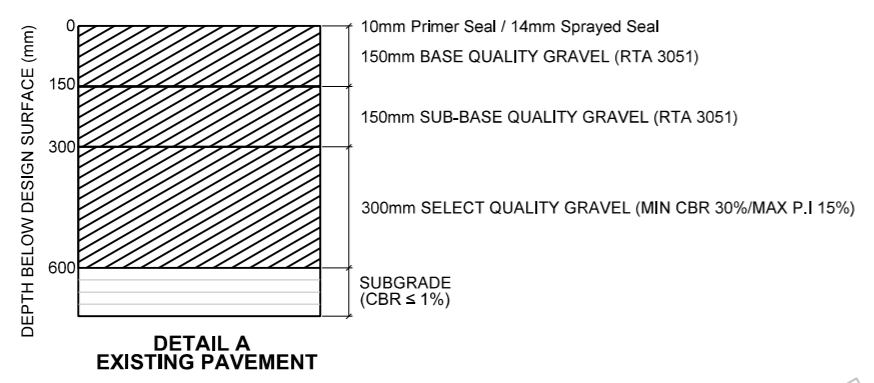
						FILE No. PM07826	DRAWING 01_COVER.dgn	No. of VOLUMES 1	No. of SHEETS
						REGISTRATION NUMBER 2012/001086		ISSUE A	SHEET No.
						LINEAR REFERENCING START: 0000000, 0000, A1, 0.000 FINISH: 0000000, 0000, A1, 0.000		VERSION 1	01
						PRINTED DATE 19/04/2013			



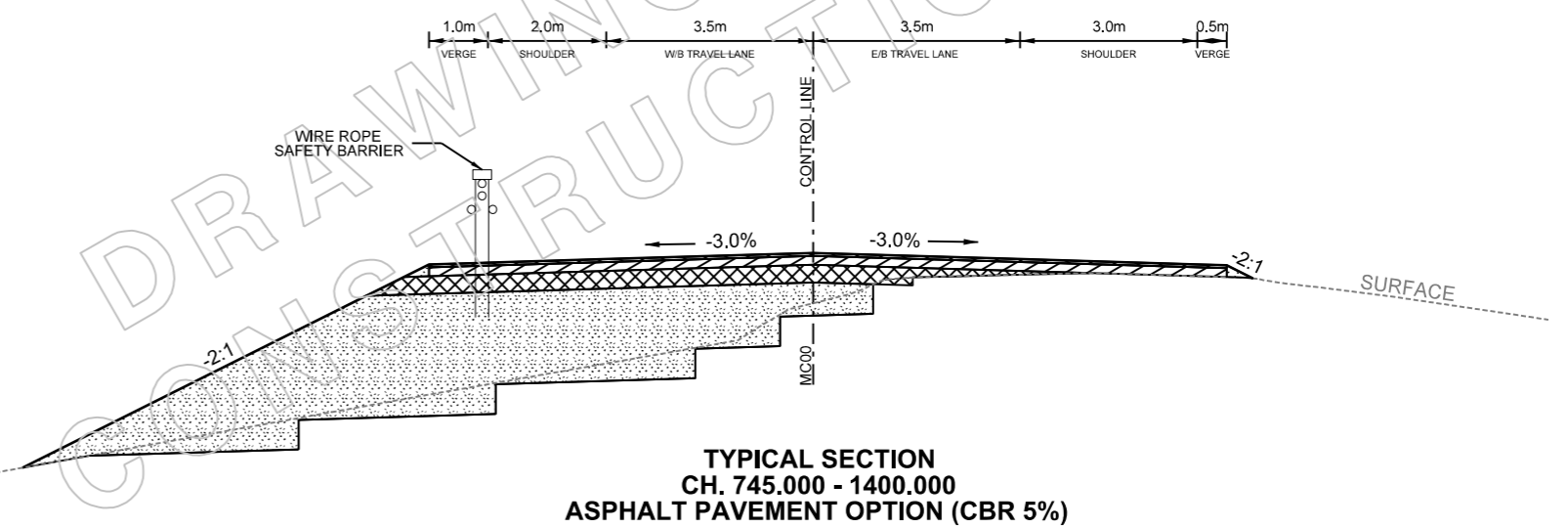
**TYPICAL SECTION
CH. 745.000 - 1400.000
FLEXIBLE PAVEMENT OPTION (CBR 5%)**



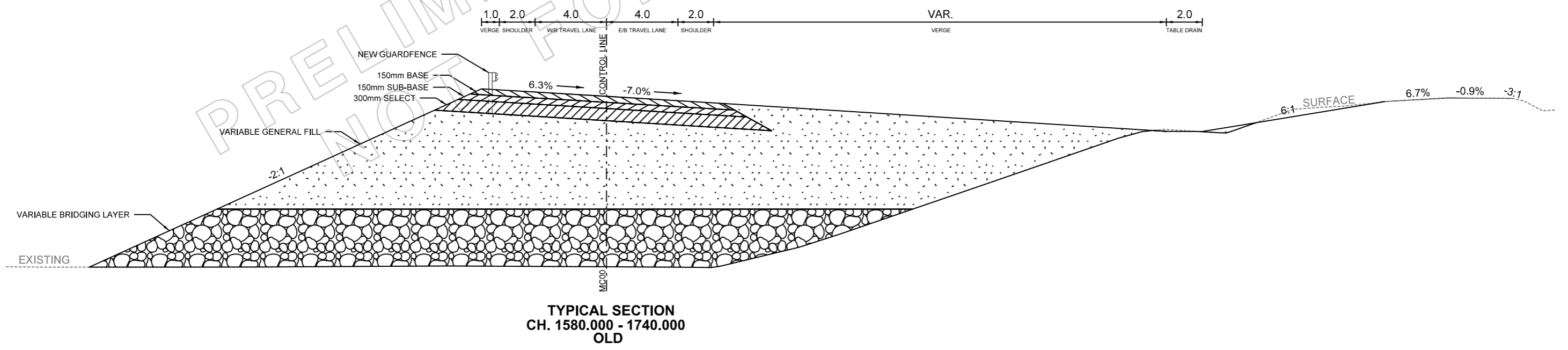
**DETAIL A
EXISTING PAVEMENT**



**DETAIL A
EXISTING PAVEMENT**



**TYPICAL SECTION
CH. 745.000 - 1400.000
ASPHALT PAVEMENT OPTION (CBR 5%)**



**TYPICAL SECTION
CH. 1580.000 - 1740.000
OLD**

PRODUCED BY rowlesm AT 19/04/2013

No.	Amendment Description	Initials	Date

A3 original This sheet may be prepared using colour and may be incomplete if copied

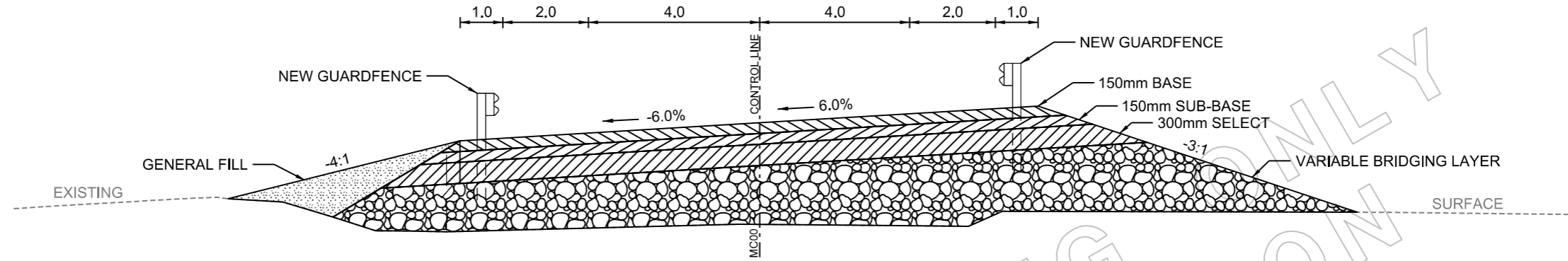
SCALES	
NOT TO SCALE	
Co-ordinate System: MGA Zone 56	Height Datum: A.H.D.

 Transport Roads & Maritime Services	DESIGNED, M ROWLES
	REVIEWED, D JOHNSON

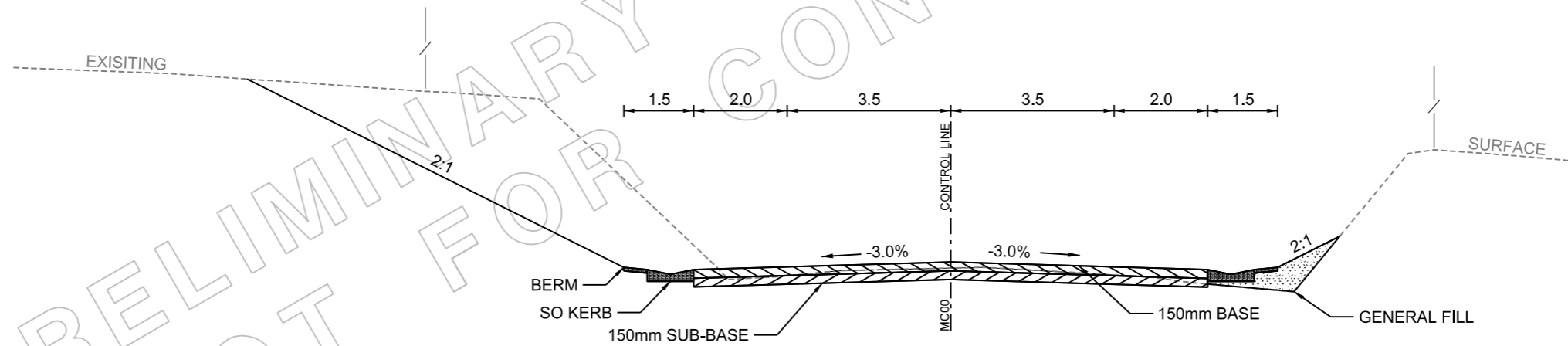
ROADS AND MARITIME SERVICES	
BELLINGEN SHIRE COUNCIL	
PACIFIC HIGHWAY TO CONNELLS CREEK	
0.745 KM TO 3490.000 WEST OF PACIFIC HIGHWAY	
CONCEPT DESIGN - OPTION B	
TYPICAL SECTION	

FILE No. PM07826	E.T. STORAGE NUMBER 2010066
REGISTRATION NUMBER 2012/001086	

ISSUE A	SHEET No. 02
VERSION 1	OF 68



TYPICAL SECTION
CH. 2380.000 - 2600.000
OLD



TYPICAL SECTION
CH. 2840.000 - 2920.000
OLD

PRELIMINARY DRAWING
NOT FOR CONSTRUCTION

PRODUCED BY rowlesm AT 19/04/2013

No.	Amendment Description	Initials	Date

SCALES	
NOT TO SCALE	
Co-ordinate System: MGA Zone 56	Height Datum: A.H.D.

 Transport Roads & Maritime Services	DESIGNED, M ROWLES
	REVIEWED, D JOHNSON

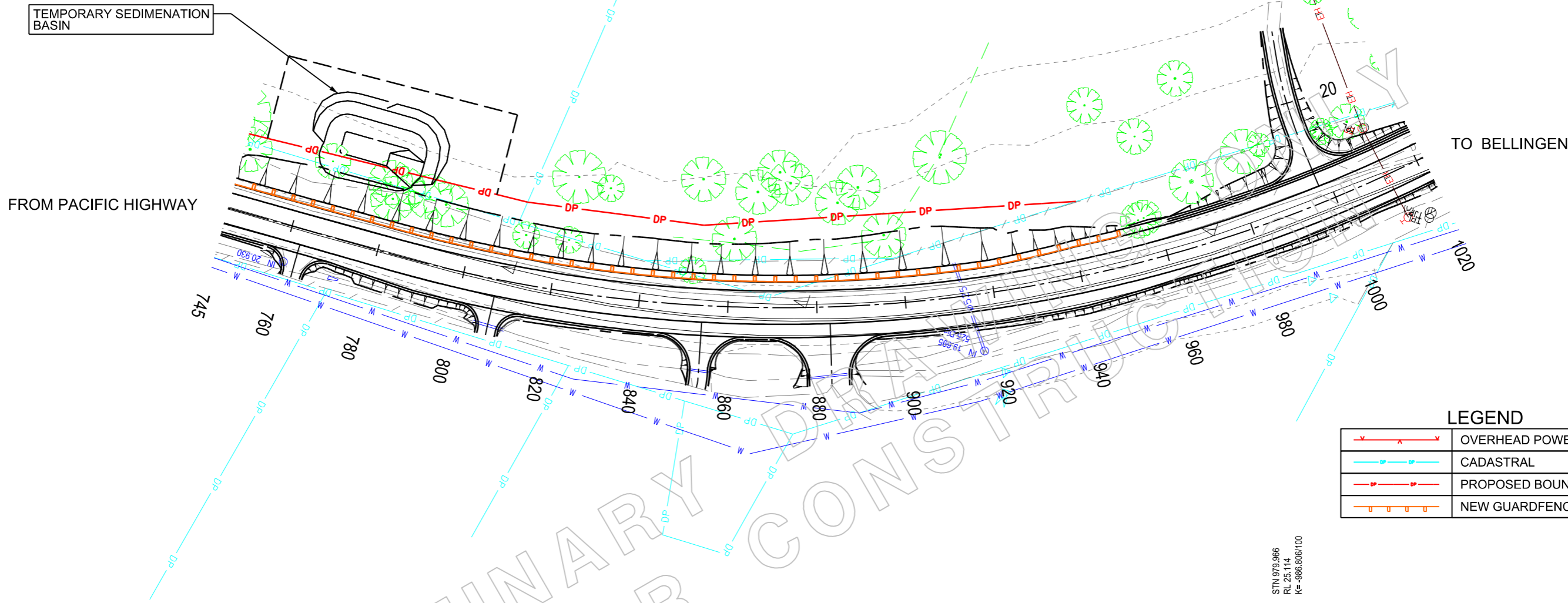
ROADS AND MARITIME SERVICES BELLINGEN SHIRE COUNCIL PACIFIC HIGHWAY TO CONNELLS CREEK 0.745 KM TO 3490.000 WEST OF PACIFIC HIGHWAY CONCEPT DESIGN - OPTION B TYPICAL SECTION
--

FILE No. PM07826	E.T. STORAGE NUMBER 2010066
REGISTRATION NUMBER 2012/001086	

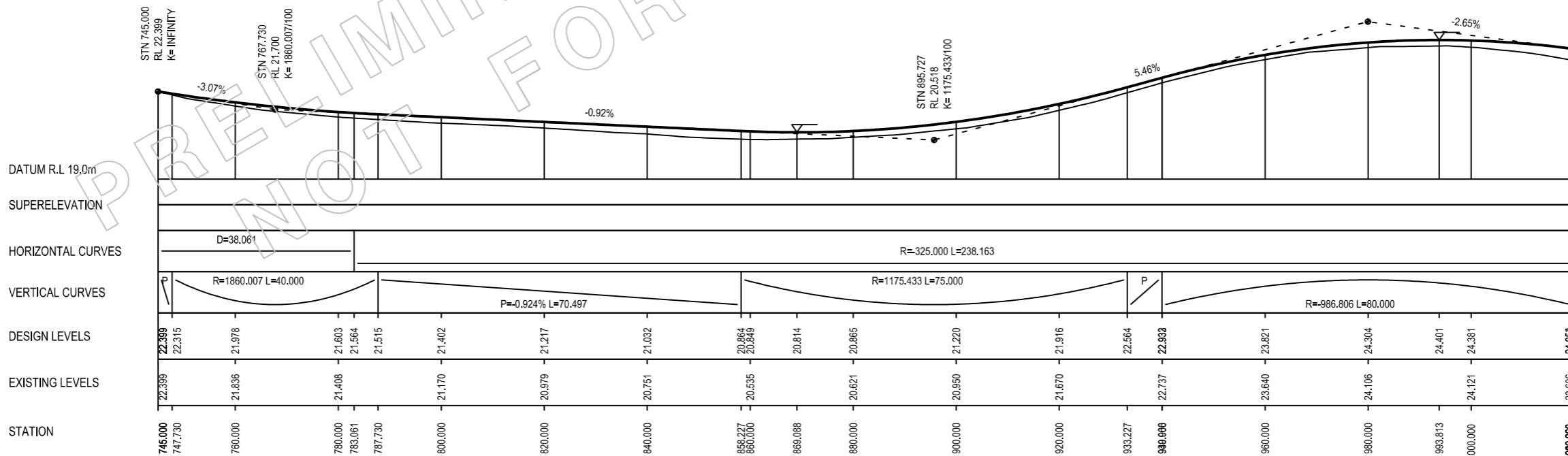
ISSUE A	SHEET No. 03
VERSION 1	OF 68

GUARDFENCE SCHEDULE (NEW)			
CHAINAGE		LENGTH (m)	
FROM	TO	LEFT	RIGHT
745.000	955.000	210m	

LENGTH INCLUDES 'ET2000' TERMINALS



LEGEND	
	OVERHEAD POWERLINES
	CADASTRAL
	PROPOSED BOUNDARY
	NEW GUARDFENCE



DESIGN CONTROL MC00 - CARRIAGEWAY
SCALE - HORIZ. 1:1000, VERT. 1:200

PRODUCED BY rowlesm AT 19/04/2013

No.	Amendment Description	Initials	Date
A3 original	This sheet may be prepared using colour and may be incomplete if copied		

SCALES	
	VERTICAL SCALE 1:200m
	HORIZONTAL SCALE 1:1000m

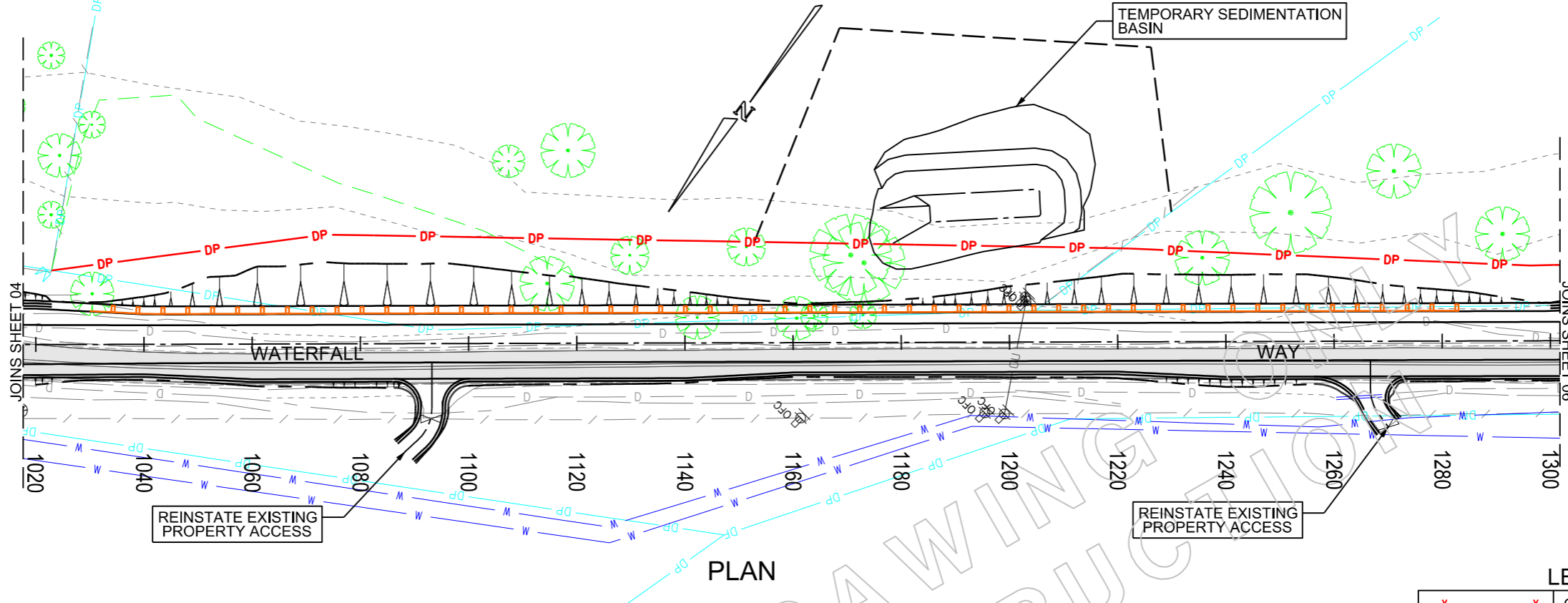
	Transport Roads & Maritime Services
DESIGNED,	M ROWLES
REVIEWED,	D JOHNSON

ROADS AND MARITIME SERVICES
BELLINGEN SHIRE COUNCIL
PACIFIC HIGHWAY TO CONNELLS CREEK
0.745 KM TO 3490.000 WEST OF PACIFIC HIGHWAY
CONCEPT DESIGN - OPTION B
DETAIL PLAN AND LONGSECTION

FILE No. PM07826	E.T. STORAGE NUMBER 2010066	ISSUE A	SHEET No. 04
REGISTRATION NUMBER 2012/001086		VERSION 1	

FROM PACIFIC HIGHWAY

TO BELLINGEN



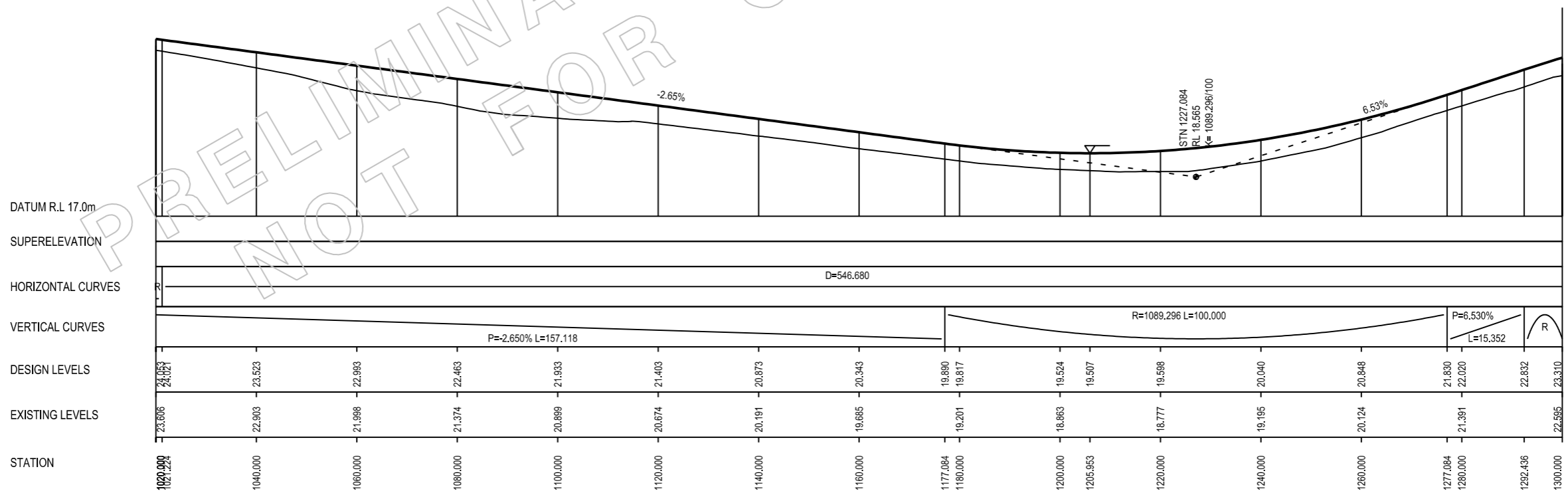
GUARDFENCE SCHEDULE (NEW)

CHAINAGE		LENGTH (m)	
FROM	TO	LEFT	RIGHT
1025.000	1290.000	265m	

LENGTH INCLUDES 'ET2000' TERMINALS

LEGEND

	OVERHEAD POWERLINES
	CADASTRAL
	PROPOSED BOUNDARY
	WIRE ROPE
	NEW GUARDFENCE



DESIGN CONTROL MC00 - CARRIAGEWAY
SCALE - HORIZ. 1:1000, VERT. 1:200

PRODUCED BY rowlesm AT 19/04/2013

No.	Amendment Description	Initials	Date

A3 original This sheet may be prepared using colour and may be incomplete if copied

SCALES

0 2 4 6 8 10
VERTICAL SCALE 1:200m

0 10 20 30 40 50
HORIZONTAL SCALE 1:1000m

Co-ordinate System: MGA Zone 56
Height Datum: A.H.D.

Transport
Roads & Maritime
Services

DESIGNED, M ROWLES
REVIEWED, D JOHNSON

ROADS AND MARITIME SERVICES

BELLINGEN SHIRE COUNCIL
PACIFIC HIGHWAY TO CONNELLS CREEK
0.745 KM TO 3490.000 WEST OF PACIFIC HIGHWAY
CONCEPT DESIGN - OPTION B
DETAIL PLAN AND LONGSECTION

FILE No.
PM07826

E.T. STORAGE NUMBER
2010066

REGISTRATION NUMBER
2012/001086

ISSUE
A

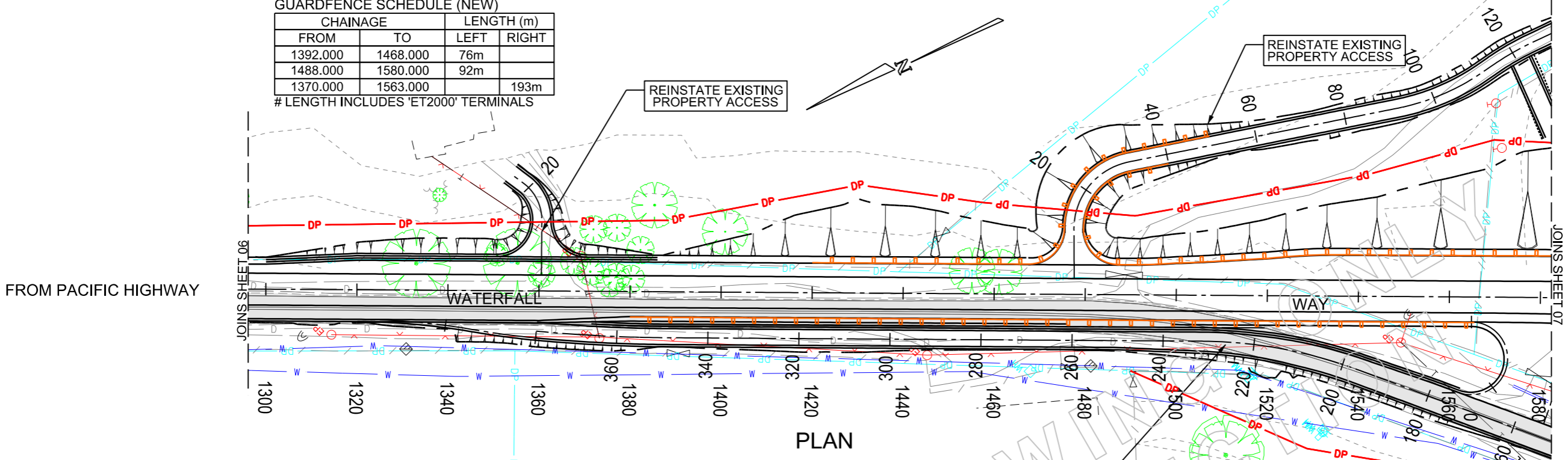
SHEET No.
05

VERSION
1

GUARDFENCE SCHEDULE (NEW)

CHAINAGE		LENGTH (m)	
FROM	TO	LEFT	RIGHT
1392.000	1468.000	76m	
1488.000	1580.000	92m	
1370.000	1563.000		193m

LENGTH INCLUDES 'ET2000' TERMINALS



FROM PACIFIC HIGHWAY

TO BELLINGEN

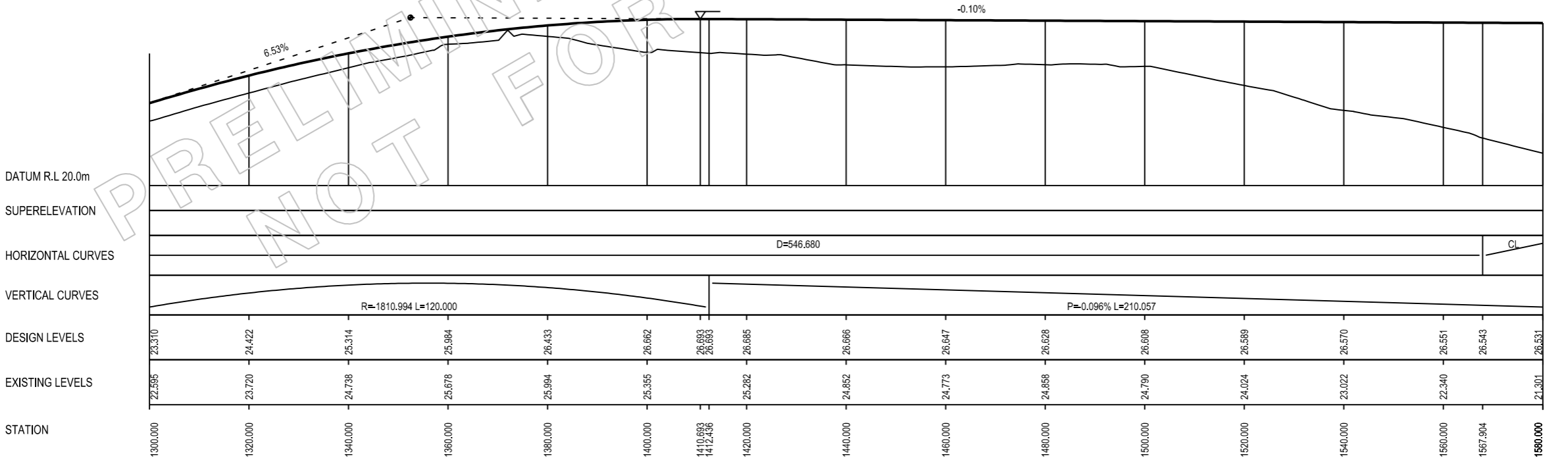
JOINS SHEET 06

JOINS SHEET 07

PLAN

LEGEND

	OVERHEAD POWERLINES
	CADASTRAL
	PROPOSED BOUNDARY
	WIRE ROPE
	NEW GUARDFENCE



DESIGN CONTROL MC00 - CARRIAGEWAY
SCALE - HORIZ. 1:1000, VERT. 1:200

PRODUCED BY rowlesm AT 19/04/2013

No.	Amendment Description	Initials	Date
A3 original	This sheet may be prepared using colour and may be incomplete if copied		

SCALES

0 2 4 6 8 10
VERTICAL SCALE 1:200m

0 10 20 30 40 50
HORIZONTAL SCALE 1:1000m

Co-ordinate System: MGA Zone 56
Height Datum: A.H.D.

Transport
Roads & Maritime Services

DESIGNED, M ROWLES
REVIEWED, D JOHNSON

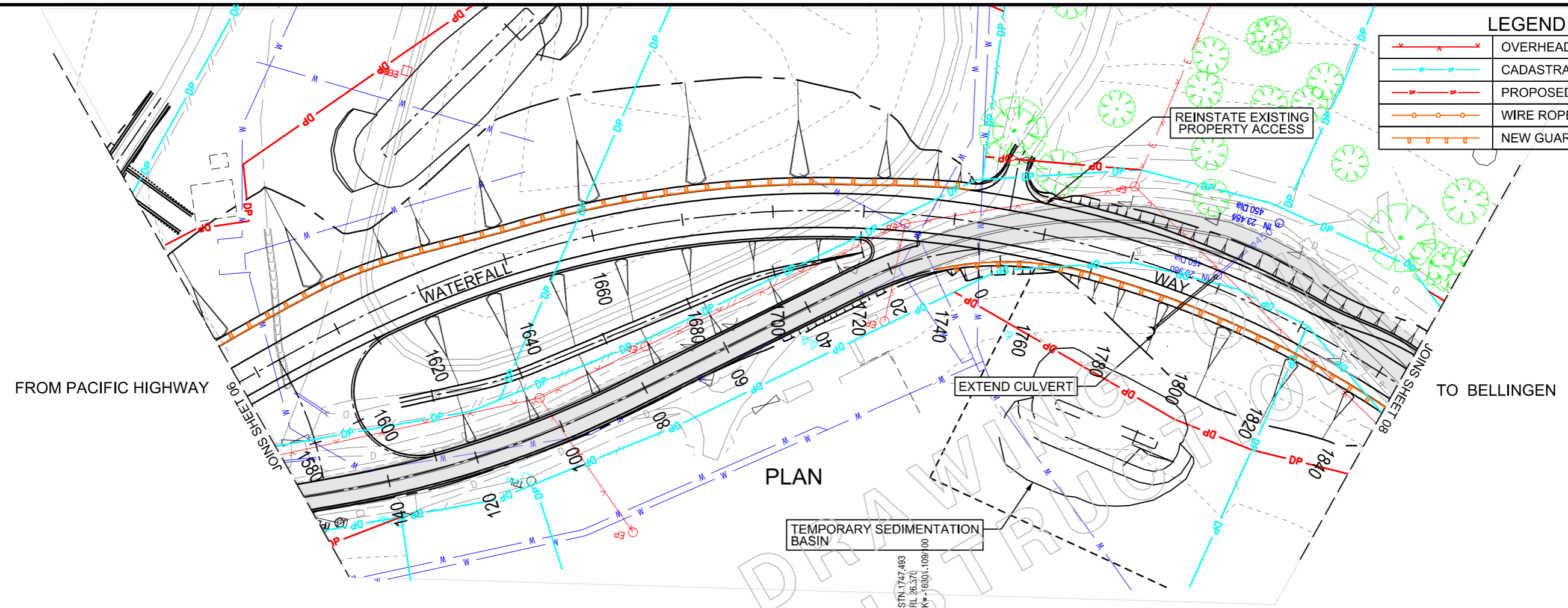
ROADS AND MARITIME SERVICES

BELLINGEN SHIRE COUNCIL
PACIFIC HIGHWAY TO CONNELLS CREEK
0.745 KM TO 3490.000 WEST OF PACIFIC HIGHWAY
CONCEPT DESIGN - OPTION B
DETAIL PLAN AND LONGSECTION

FILE No. PM07826	E.T. STORAGE NUMBER 2010066	ISSUE A	SHEET No. 06
REGISTRATION NUMBER 2012/001086		VERSION 1	

LEGEND

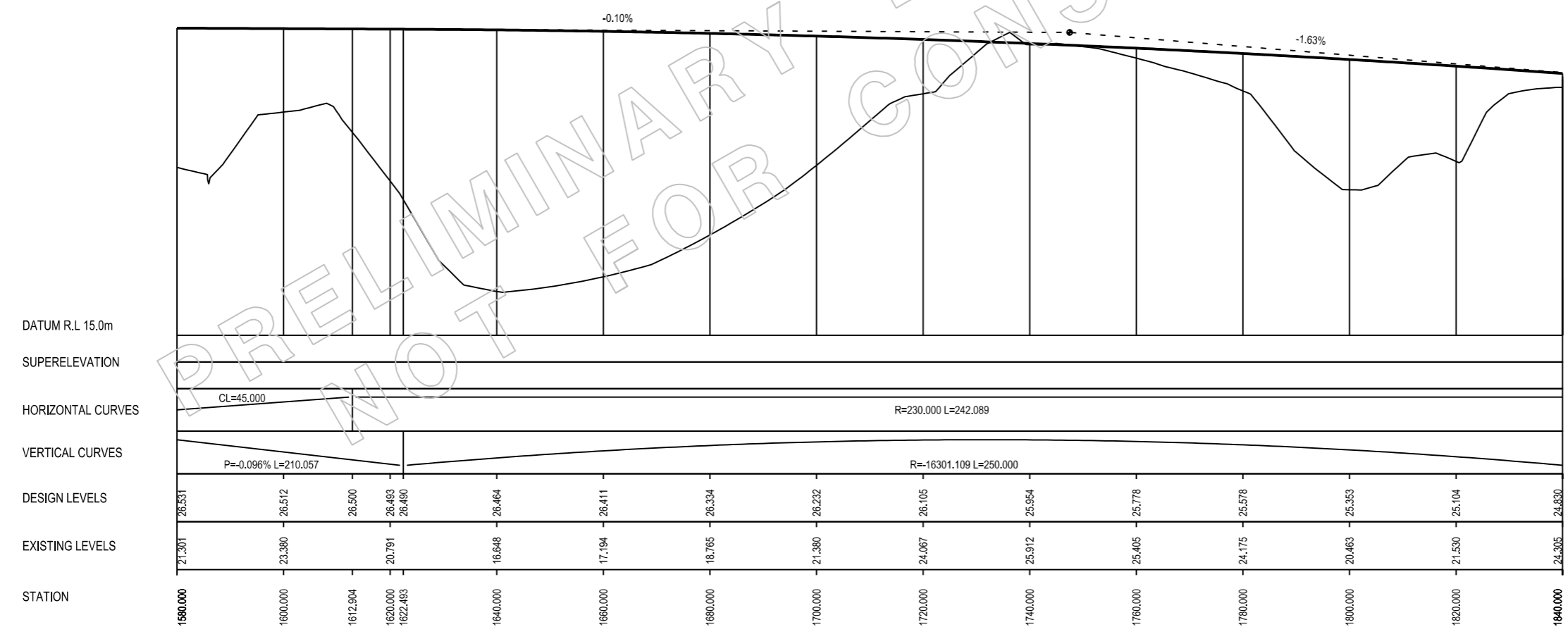
	OVERHEAD POWERLINES
	CADASTRAL
	PROPOSED BOUNDARY
	WIRE ROPE
	NEW GUARDFENCE



FROM PACIFIC HIGHWAY

TO BELLINGEN

PLAN



DESIGN CONTROL MC00 - CARRIAGEWAY
SCALE - HORIZ. 1:1000, VERT. 1:200

PRODUCED BY rowlesm AT 19/04/2013

No.	Amendment Description	Initials	Date

SCALES

0 2 4 6 8 10
VERTICAL SCALE 1:200m

0 10 20 30 40 50
HORIZONTAL SCALE 1:1000m

Co-ordinate System: MGA Zone 56
Height Datum: A.H.D.

Transport
Roads & Maritime Services

DESIGNED, M ROWLES
REVIEWED, D JOHNSON

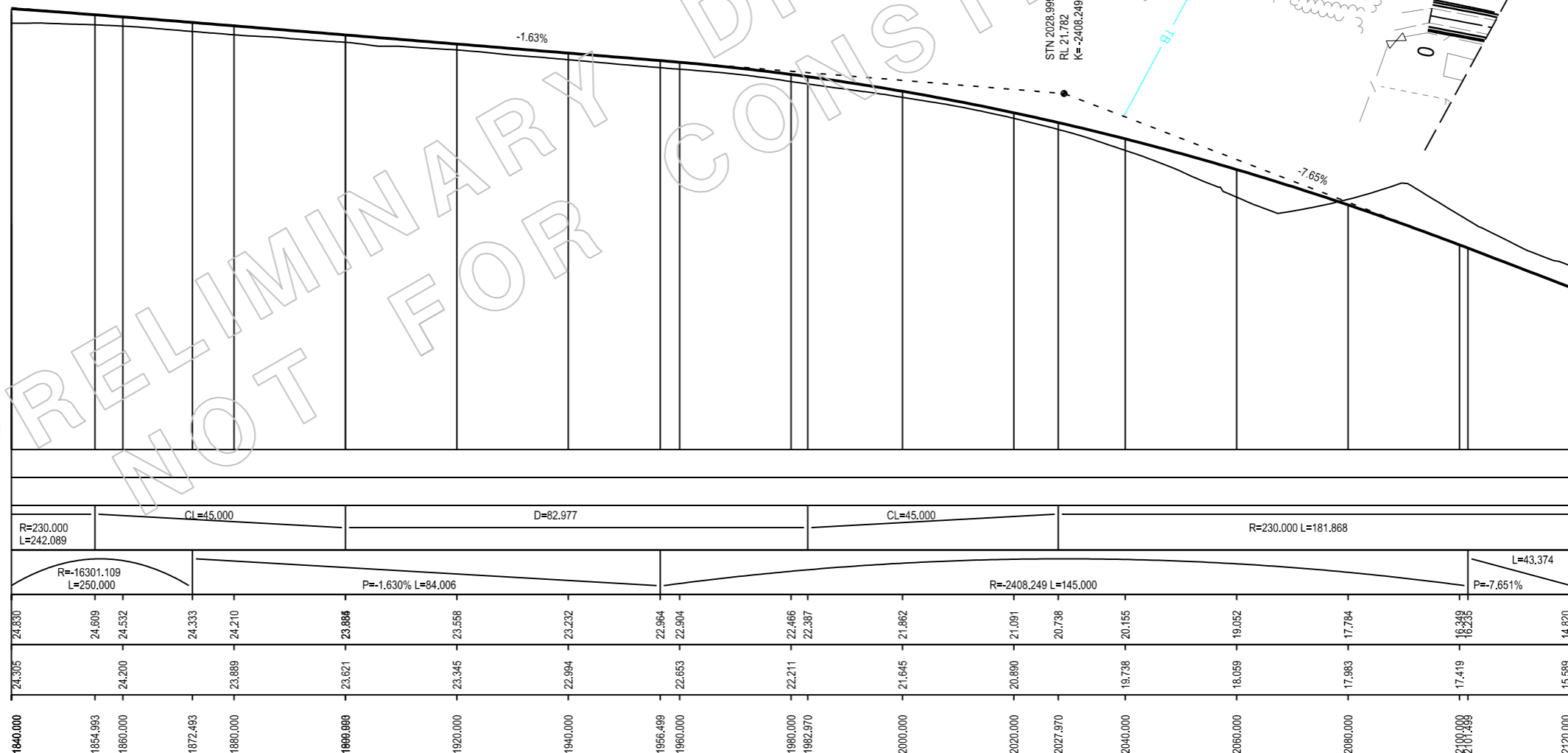
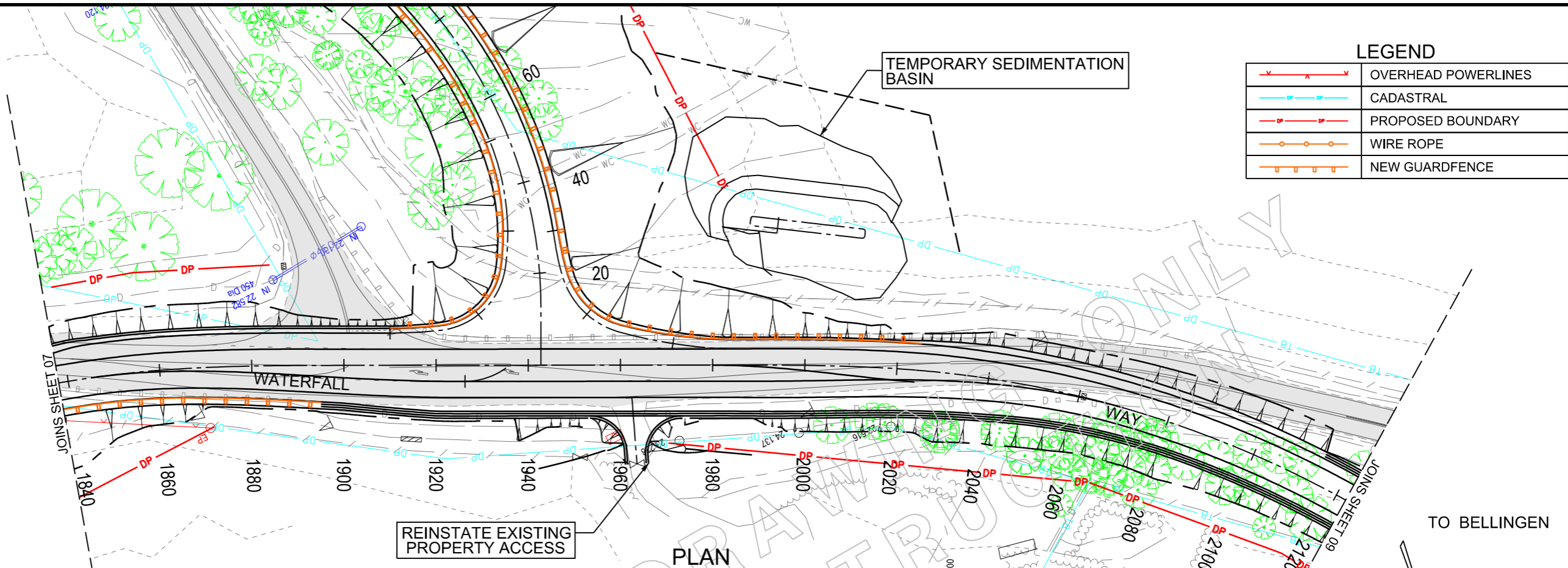
ROADS AND MARITIME SERVICES

BELLINGEN SHIRE COUNCIL
PACIFIC HIGHWAY TO CONNELLS CREEK
0.745 KM TO 3490.000 WEST OF PACIFIC HIGHWAY
CONCEPT DESIGN - OPTION B
DETAIL PLAN AND LONGSECTION

FILE No. PM07826	E.T. STORAGE NUMBER 2010066	ISSUE A	SHEET No. 07
REGISTRATION NUMBER 2012/001086		VERSION 1	

LEGEND	
	OVERHEAD POWERLINES
	CADASTRAL
	PROPOSED BOUNDARY
	WIRE ROPE
	NEW GUARDFENCE

FROM PACIFIC HIGHWAY

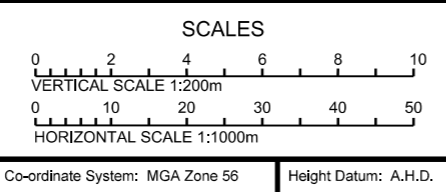


DATUM R.L. 9.0m
 SUPERELEVATION
 HORIZONTAL CURVES
 VERTICAL CURVES
 DESIGN LEVELS
 EXISTING LEVELS
 STATION

DESIGN CONTROL MC00 - CARRIAGEWAY
 SCALE - HORIZ. 1:1000, VERT. 1:200

PRODUCED BY rowlesm AT 19/04/2013

No.	Amendment Description	Initials	Date



Transport
 Roads & Maritime Services
 NSW GOVERNMENT

DESIGNED, M ROWLES
 REVIEWED, D JOHNSON

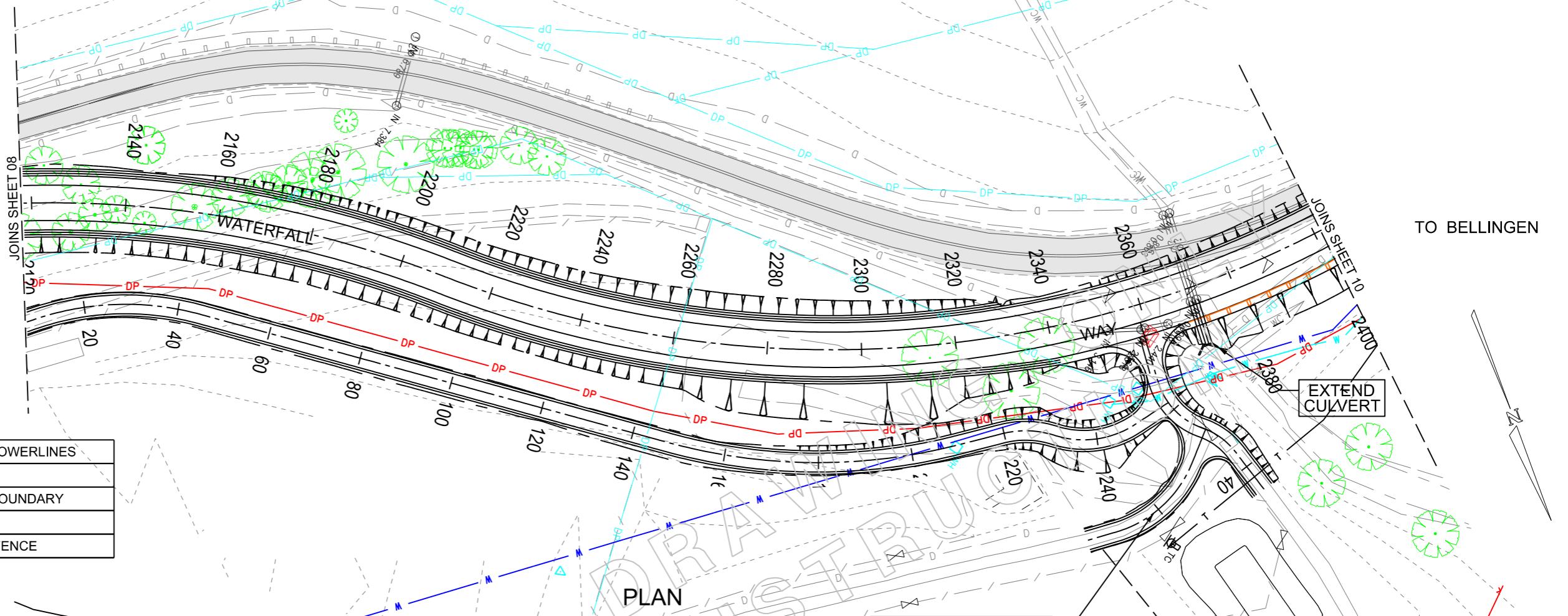
ROADS AND MARITIME SERVICES

BELLINGEN SHIRE COUNCIL
 PACIFIC HIGHWAY TO CONNELLS CREEK
 0.745 KM TO 3490.000 WEST OF PACIFIC HIGHWAY
 CONCEPT DESIGN - OPTION B
 DETAIL PLAN AND LONGSECTION

FILE No. PM07826	E.T. STORAGE NUMBER 2010066	ISSUE A	SHEET No. 08
REGISTRATION NUMBER 2012/001086		VERSION 1	

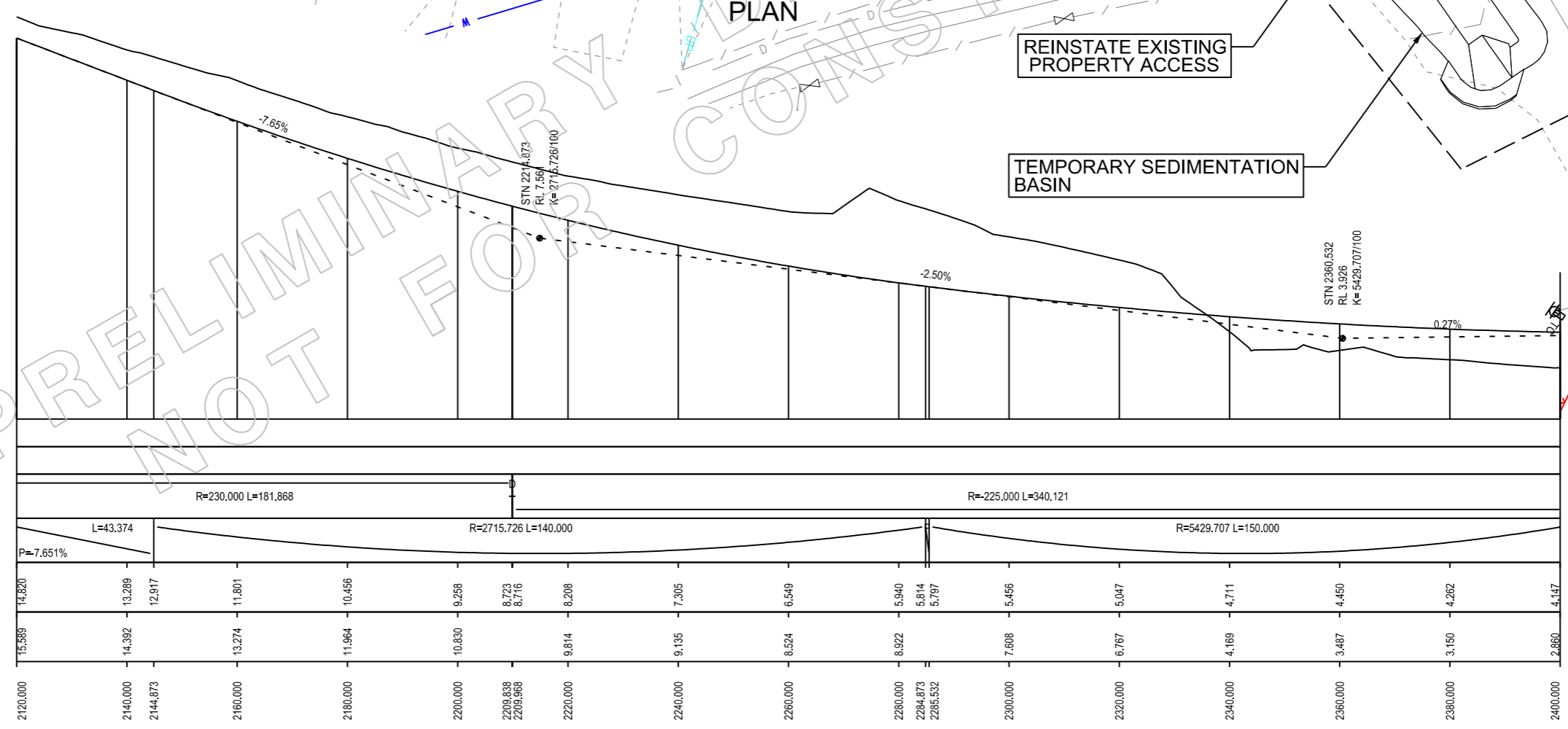
FROM PACIFIC HIGHWAY

TO BELLINGEN



LEGEND

	OVERHEAD POWERLINES
	CADASTRAL
	PROPOSED BOUNDARY
	WIRE ROPE
	NEW GUARDFENCE



PRODUCED BY rowlesm AT 19/04/2013

No.	Amendment Description	Initials	Date

A3 original This sheet may be prepared using colour and may be incomplete if copied

SCALES

0 2 4 6 8 10
VERTICAL SCALE 1:200m

0 10 20 30 40 50
HORIZONTAL SCALE 1:1000m

Co-ordinate System: MGA Zone 56
Height Datum: A.H.D.

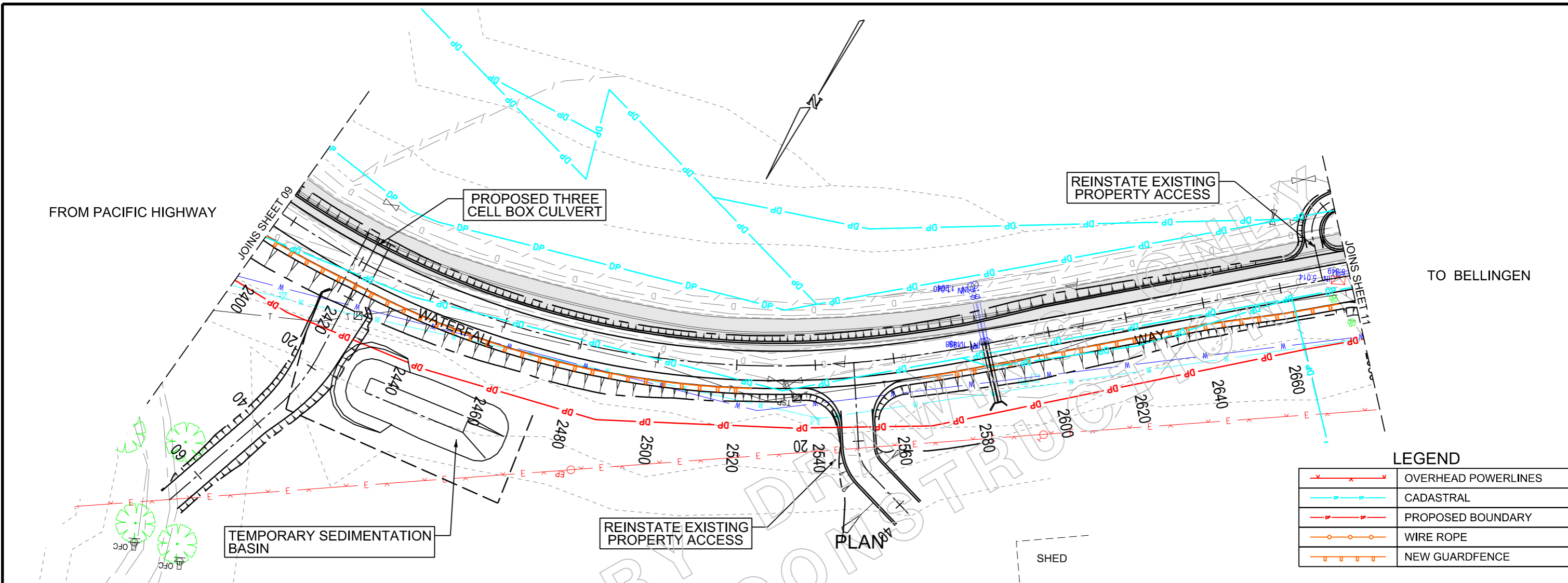
Transport
Roads & Maritime Services

DESIGNED, M ROWLES
REVIEWED, D JOHNSON

ROADS AND MARITIME SERVICES

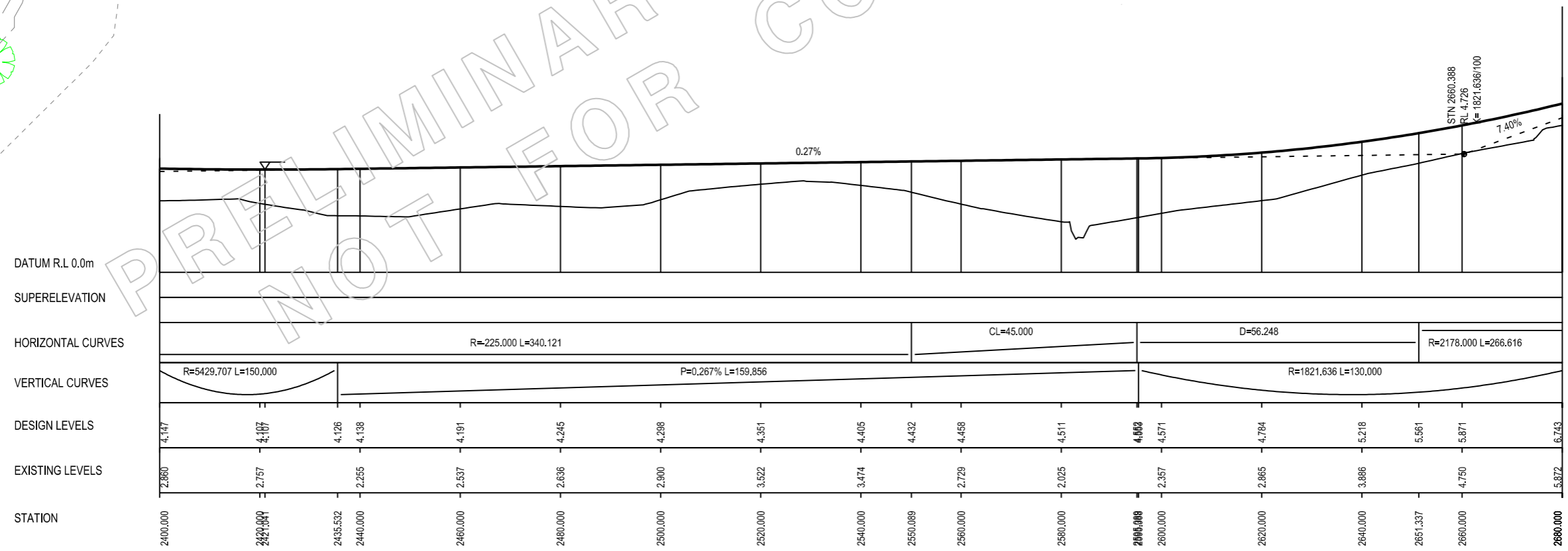
BELLINGEN SHIRE COUNCIL
PACIFIC HIGHWAY TO CONNELLS CREEK
0.745 KM TO 3490.000 WEST OF PACIFIC HIGHWAY
CONCEPT DESIGN - OPTION B
DETAIL PLAN AND LONGSECTION

FILE No. PM07826	E.T. STORAGE NUMBER 2010066	ISSUE A	SHEET No. 09
REGISTRATION NUMBER 2012/001086		VERSION 1	



LEGEND

	OVERHEAD POWERLINES
	CADASTRAL
	PROPOSED BOUNDARY
	WIRE ROPE
	NEW GUARDFENCE



DESIGN CONTROL MC00 - CARRIAGEWAY
SCALE - HORIZ. 1:1000, VERT. 1:200

PRODUCED BY rowlesm AT 19/04/2013

No.	Amendment Description	Initials	Date
A3 original	This sheet may be prepared using colour and may be incomplete if copied		

SCALES

0 2 4 6 8 10
VERTICAL SCALE 1:200m

0 10 20 30 40 50
HORIZONTAL SCALE 1:1000m

Co-ordinate System: MGA Zone 56
Height Datum: A.H.D.

Transport
Roads & Maritime Services

DESIGNED, M ROWLES
REVIEWED, D JOHNSON

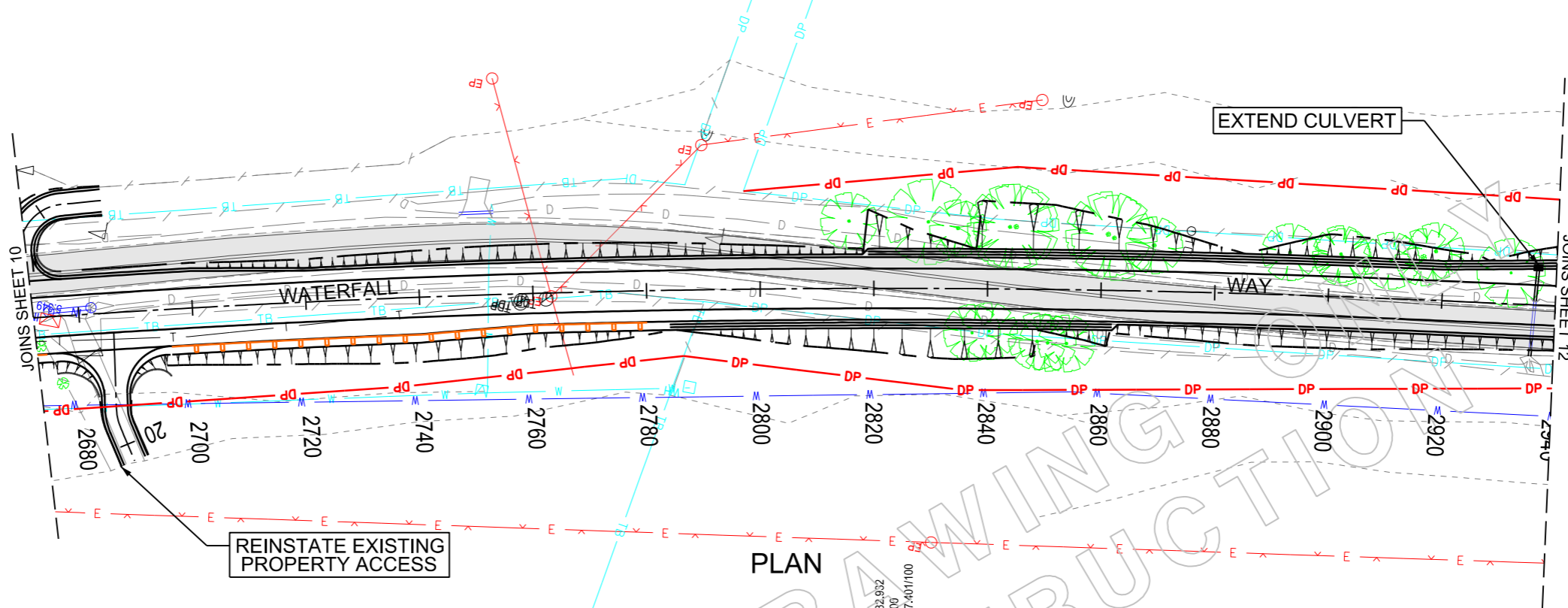
ROADS AND MARITIME SERVICES

BELLINGEN SHIRE COUNCIL
PACIFIC HIGHWAY TO CONNELLS CREEK
0.745 KM TO 3490.000 WEST OF PACIFIC HIGHWAY
CONCEPT DESIGN - OPTION B
DETAIL PLAN AND LONGSECTION

FILE No. PM07826	E.T. STORAGE NUMBER 2010066	ISSUE A	SHEET No. 10
REGISTRATION NUMBER 2012/001086		VERSION 1	

FROM PACIFIC HIGHWAY

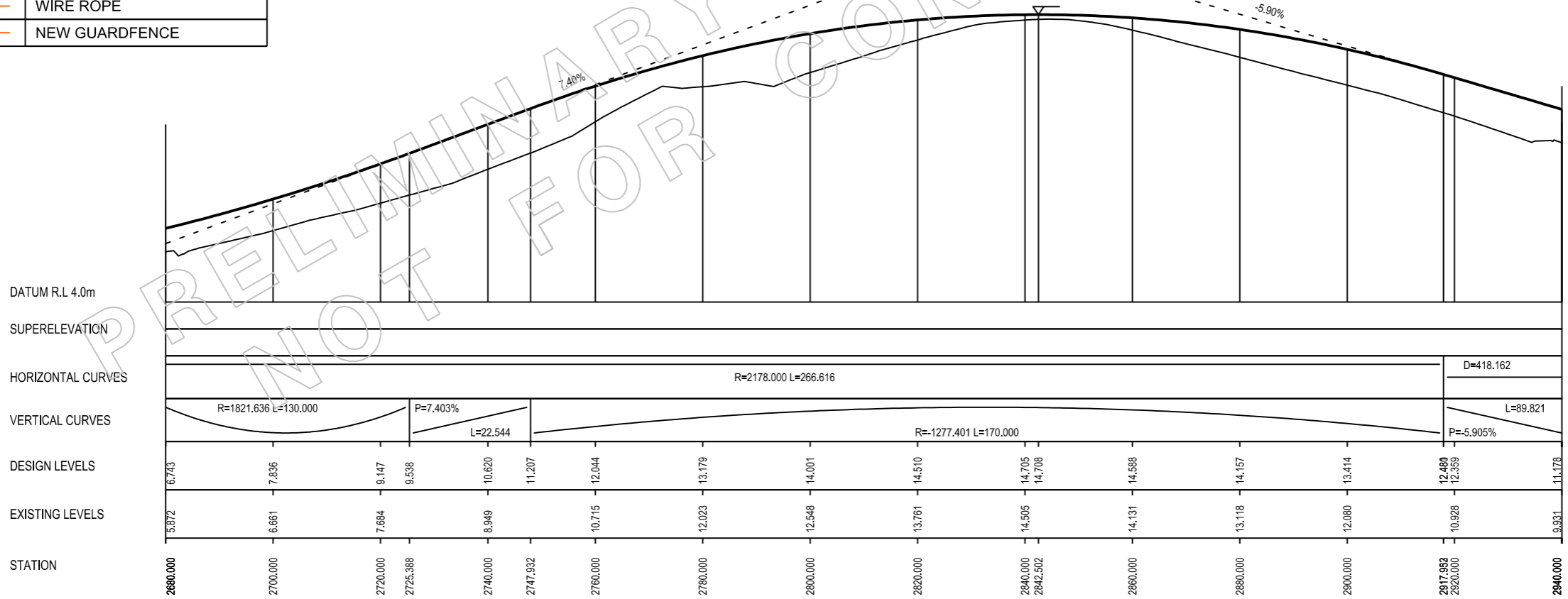
TO BELLINGEN



PLAN

LEGEND

	OVERHEAD POWERLINES
	CADASTRAL
	PROPOSED BOUNDARY
	WIRE ROPE
	NEW GUARDFENCE



DESIGN CONTROL MC00 - CARRIAGEWAY
SCALE - HORIZ. 1:1000, VERT. 1:200

PRODUCED BY rowlesm AT 19/04/2013

No.	Amendment Description	Initials	Date

<p>SCALES</p>	
Co-ordinate System: MGA Zone 56	Height Datum: A.H.D.

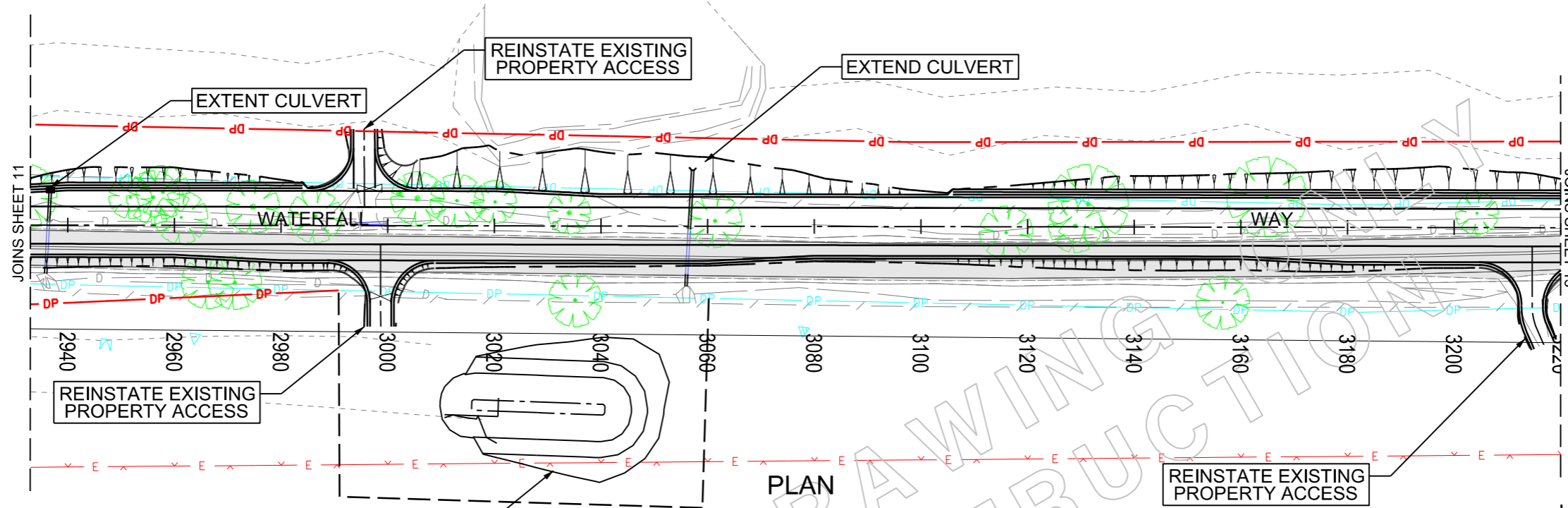
	<p>Transport Roads & Maritime Services</p>
DESIGNED,	M ROWLES
REVIEWED,	D JOHNSON

<p>ROADS AND MARITIME SERVICES</p>	
<p>BELLINGEN SHIRE COUNCIL PACIFIC HIGHWAY TO CONNELLS CREEK 0.745 KM TO 3490.000 WEST OF PACIFIC HIGHWAY CONCEPT DESIGN - OPTION B DETAIL PLAN AND LONGSECTION</p>	

FILE No. PM07826	E.T. STORAGE NUMBER 2010066	ISSUE A	SHEET No. 11
REGISTRATION NUMBER 2012/001086		VERSION 1	

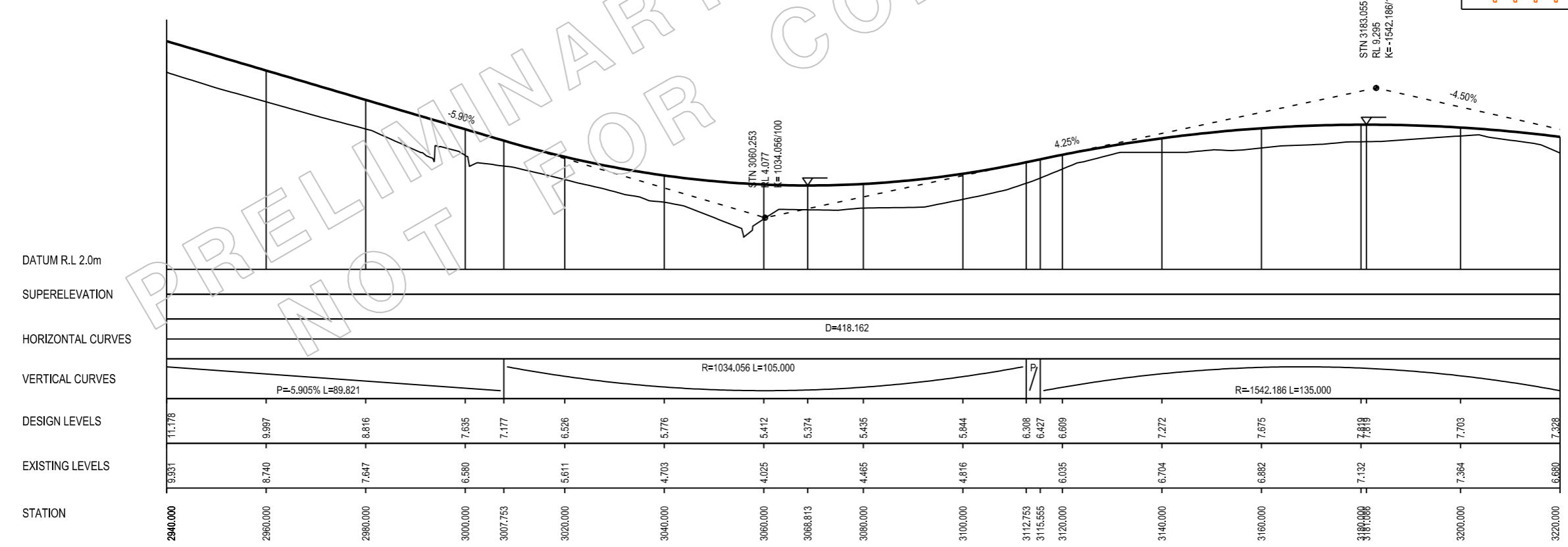
FROM PACIFIC HIGHWAY

TO BELLINGEN



PLAN

LEGEND	
	OVERHEAD POWERLINES
	CADASTRAL
	PROPOSED BOUNDARY
	WIRE ROPE
	NEW GUARDFENCE



DESIGN CONTROL MC00 - CARRIAGEWAY
SCALE - HORIZ. 1:1000, VERT. 1:200

PRODUCED BY rowlesm AT 19/04/2013

No.	Amendment Description	Initials	Date

SCALES	
	VERTICAL SCALE 1:200m
	HORIZONTAL SCALE 1:1000m
Co-ordinate System: MGA Zone 56	
Height Datum: A.H.D.	

Transport
Roads & Maritime
Services

DESIGNED, M ROWLES

REVIEWED, D JOHNSON

ROADS AND MARITIME SERVICES

BELLINGEN SHIRE COUNCIL

PACIFIC HIGHWAY TO CONNELLS CREEK

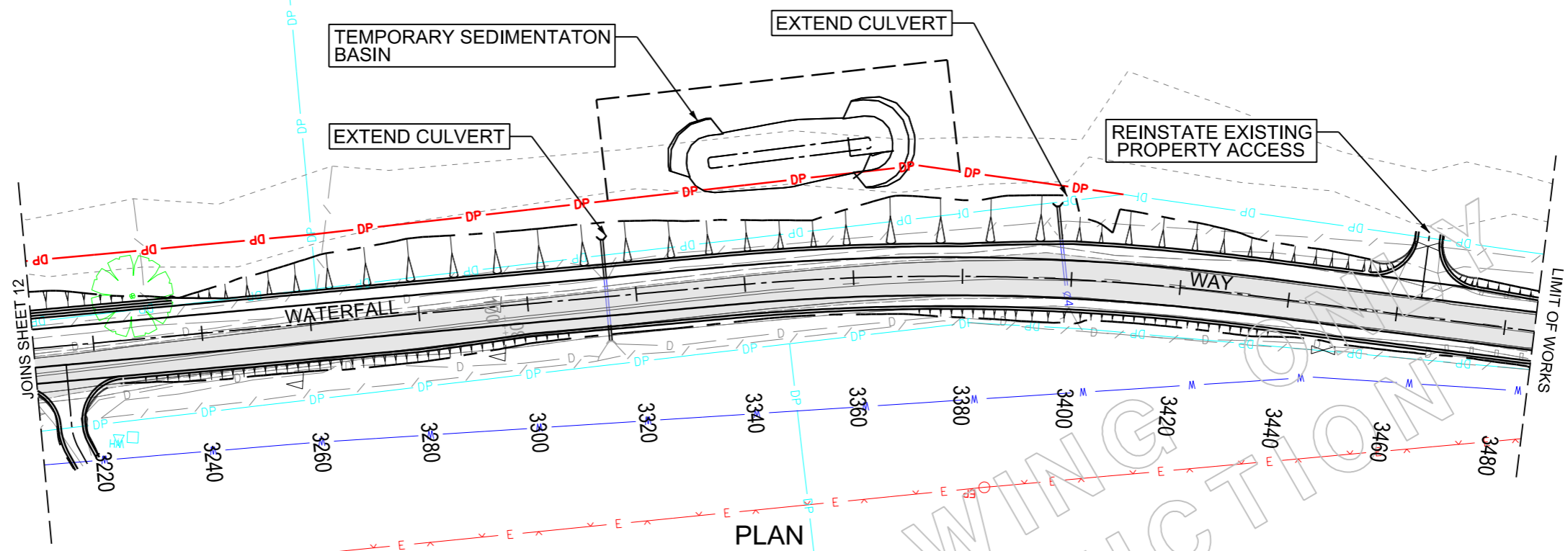
0.745 KM TO 3490.000 WEST OF PACIFIC HIGHWAY

CONCEPT DESIGN - OPTION B

DETAIL PLAN AND LONGSECTION

FILE No. PM07826	E.T. STORAGE NUMBER 2010066	ISSUE A	SHEET No. 12
REGISTRATION NUMBER 2012/001086		VERSION 1	

FROM PACIFIC HIGHWAY

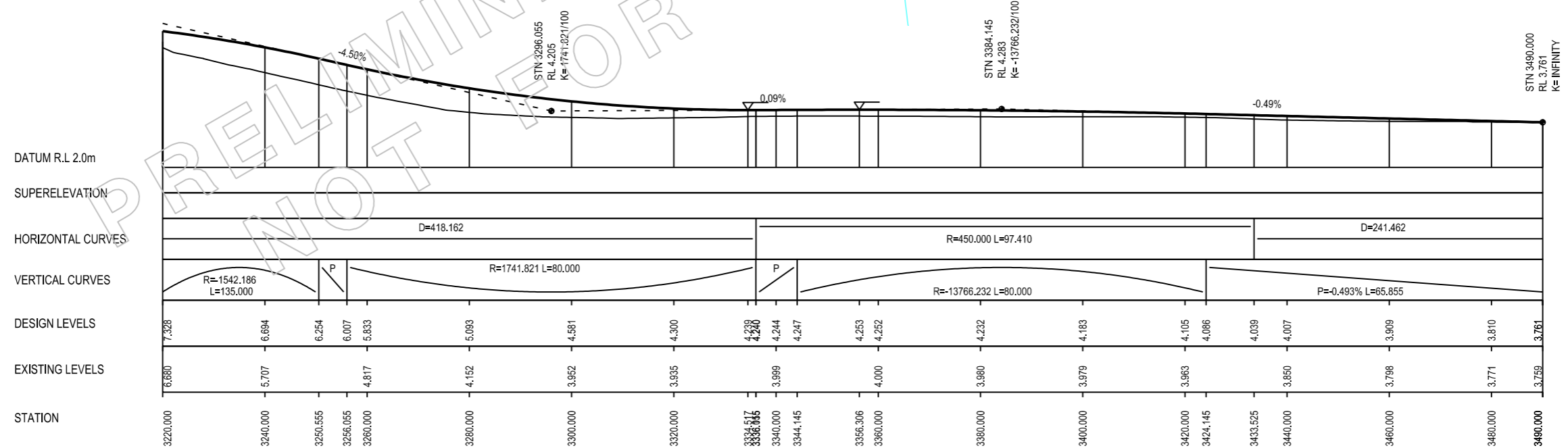


TO BELLINGEN

PLAN

LEGEND

	OVERHEAD POWERLINES
	CADASTRAL
	PROPOSED BOUNDARY
	WIRE ROPE
	NEW GUARDFENCE



DESIGN CONTROL MC00 - CARRIAGEWAY
SCALE - HORIZ. 1:1000, VERT. 1:200

PRODUCED BY rowlesm AT 19/04/2013

No.	Amendment Description	Initials	Date

SCALES

0 2 4 6 8 10
VERTICAL SCALE 1:200m

0 10 20 30 40 50
HORIZONTAL SCALE 1:1000m

Co-ordinate System: MGA Zone 56
Height Datum: A.H.D.

Transport
Roads & Maritime Services

DESIGNED, M ROWLES
REVIEWED, D JOHNSON

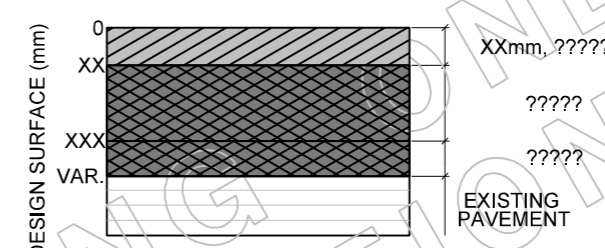
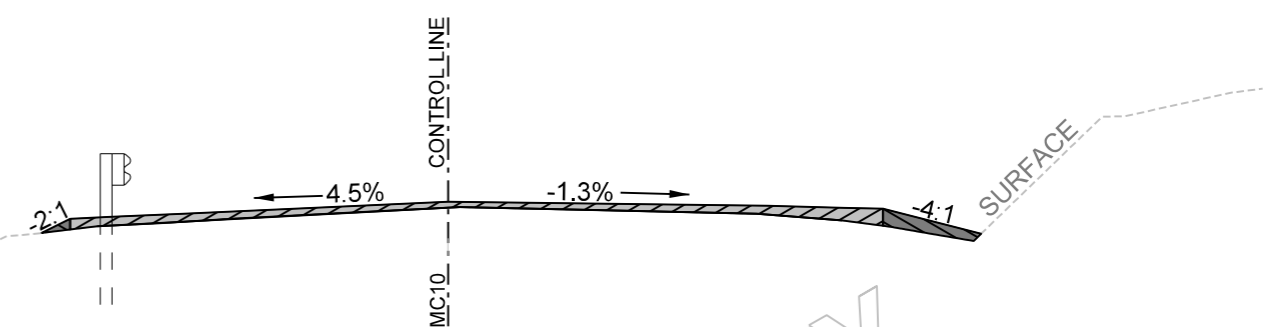
ROADS AND MARITIME SERVICES

BELLINGEN SHIRE COUNCIL
PACIFIC HIGHWAY TO CONNELLS CREEK
0.745 KM TO 3490.000 WEST OF PACIFIC HIGHWAY
CONCEPT DESIGN - OPTION B
DETAIL PLAN AND LONGSECTION

FILE No. PM07826	E.T. STORAGE NUMBER 2010066	ISSUE A	SHEET No. 13
REGISTRATION NUMBER 2012/001086		VERSION 1	

LEGEND

	OVERHEAD POWERLINES
	CADASTRAL
	PROPOSED BOUNDARY
	WIRE ROPE
	NEW GUARDFENCE



This is to certify that the Details shown on this plan are appropriate for Setout of the Project.
 Authorised by Tony Bamforth (Survey Manager)
 Signed.....Date.....

HORIZONTAL ALIGNMENT CONTROL MCXX



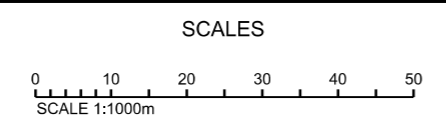
HORIZONTAL ALIGNMENT CONTROL MCXX



DETAIL PLAN SHORTCUT ROAD

PRODUCED BY rowlesm AT 19/04/2013

No.	Amendment Description	Initials	Date



Transport
 Roads & Maritime
 Services

DESIGNED, M ROWLES
 REVIEWED, D JOHNSON

ROADS AND MARITIME SERVICES

BELLINGEN SHIRE COUNCIL
 PACIFIC HIGHWAY TO CONNELLS CREEK
 0.745 KM TO 3490.000 WEST OF PACIFIC HIGHWAY
 CONCEPT DESIGN - OPTION B
 DETAIL PLAN AND LONGSECTION

FILE No. PM07826	E.T. STORAGE NUMBER 2010066	ISSUE A	SHEET No. 14
REGISTRATION NUMBER 2012/001086		VERSION 1	

A3 original This sheet may be prepared using colour and may be incomplete if copied

Co-ordinate System: MGA Zone 56 Height Datum: A.H.D.

E BDGE (BRIDGE STRUCTURES)

- ABUTMENT BOTTOM (AB)
- ABUTMENT BOTTOM POINT (PABB)
- ABUTMENT TOP (AT)
- ABUTMENT TOP POINT (PABT)
- CAP-PILE (PBCP)
- DECK (BR)
- EXPANSION JOINT (XJ)
- EXPANSION PLATE (XP)
- HEADSTOCK (HS)
- PIER-COLUMN (BC)
- PIER-COLUMN POINT (PBPI)
- UNDERNEATH CLEARANCE (UC)
- WING WALL (WW)

E BDYS (BOUNDARIES)

- DIGITAL CADASTRE (ACCURACY 1.0m) (BM)
- DIGITISING EXTENT (PHOTO) (DE)
- DP OVERLAY (ACCURACY 0.1m) (BO)
(CALCULATED FROM DEPOSITED PLAN)
- EASEMENT (BE)
- FIELD COMPLETION BOUNDARY (PHOTO) (NF)
- FIELD SURVEY EXTENT (PHOTO) (FS)
- LOCAL GOVERNMENT (BL)
- PARISH (BP)
- TITLE (ACCURACY 0.02m) (BT)

E BUIL (BUILDINGS & STRUCTURES)

- AWNING (AW)
- AWNING - POINT (PAWN)
- BOTTOM OF WALL (BW)
- BUILDING EAVES (BV)
- BUILDING WALLS (BU)
- CEMETERY (OC)
- CONCRETE SLAB AT GROUND LEVEL (VE)
- CORNER OF BUILDING AT NS (PCBU)
- DOORWAY (DO)
- FLOOR LEVEL (PFLR)
- GENERAL BUILT-UP AREA (OB)
- LOADING BAY-DOCK (LB)
- MISCELLANEOUS STRUCTURE (OM)
- RETAINING WALL (RW)
- RUIN (OR)
- SILO OR TANK (OS)
- SPORTING ARENA (OO)
- STAIRS - OUTSIDE (SO)
- SWIMMING POOL (OT)
- TOP OF WALL (TW)

E COMM (COMMUNICATIONS)

- ABOVE GROUND JOINING POST (PTJP)
- ITS CABLE (IT)
- OPTICAL FIBRE - ABOVE GROUND (OA)
- OPTICAL FIBRE - DIGITISED (OZ)
- OPTICAL FIBRE - UNDERGROUND (OU)
- OPTICAL FIBRE CABLE MARKER (POFM)
- OPTICAL FIBRE CONDUIT (OD)
- OPTICAL FIBRE JUNCTION BOX (POFJ)
- OPTICAL FIBRE PIT (POFP)
- STD 1.1m BY 1.1m MAIN PIT (PTMP)
- TELEPHONE - HOUSE CONNECTION (TY)
- TELEPHONE BOX (TX)
- TELEPHONE BOX POINT (PTBX)
- TELEPHONE CABLE MARKER (PTCM)
- TELEPHONE DISTRIBUTION PILLAR (PTDP)
- TELEPHONE CONDUIT (TD)
- TELEPHONE LINE (TN)
- TELEPHONE LINE - DIGITISED (TZ)
- TELEPHONE POLE (PTPL)
- TELEPHONE SINGLE CONCRETE PIT (PTSP)
- TELEPHONE SUMP (TS)
- TELEPHONE TRANSMITTER - MOBILE (PMPT)
- TELEPHONE TRIPLE CONCRETE PIT (PT3P)
- TELEPHONE TWIN CONCRETE PIT (PTTP)

E CONT (PHOTOGRAMMETRY)

- CONTOUR - AUX (DECIMETRE) (YQ)
- CONTOUR - AUX (WHOLE METRE) (Y)
- CONTOUR - INDEX (Z)
- CONTOUR - INDEX DEPRESSION (ZQ)
- CONTOUR - INTER DEPRESSION (XQ)
- CONTOUR - STANDARD-INTER (X)

E CULT (CULTURAL)

- BIN - LARGE (BI)
- BOLLARD (AC)
- BUS SHELTER (BH)
- BUS STOP (PBUS)
- FENCE (FE)
- FENCE LINE (FL)
- FENCE MANPROOF (FM)
- FENCE OTHER (FC)
- FENCE POST-GUIDE POST (POST)
- FIREPLACE (PFPL)
- FLAG POLE (PFLG)
- GATE (AG)
- HEADSTONE (PHST)

E CULT (CULTURAL) Continued

- LARGE SIGN (SI)
- MAILBOX (PMBX)
- PARKING METER (PKME)
- PICNIC TABLE (TA)
- PUMP (PWEP)
- RUBBISH BIN (PBIN)
- SAFETY FENCE (SF)
- SEAT (SE)
- SIGN POST (PSIN)
- SIGN POST - DOUBLE SIDED (PSDS)
- SIGN WITH OUTREACH (SX)
- WINDMILL (OW)
- WINDMILL - POINT (PWML)

E DRAIN (STORMWATER)

- BATTER DRAIN OR FLUME (DF)
- BOX CULVERT - 150 HIGH (B0)
- BOX CULVERT - 225 HIGH (B1)
- BOX CULVERT - 300 HIGH (B2)
- BOX CULVERT - 375 HIGH (B3)
- BOX CULVERT - 450 HIGH (B4)
- BOX CULVERT - 600 HIGH (B6)
- BOX CULVERT - 750 HIGH (B7)
- BOX CULVERT - 900 HIGH (B9)
- BOX CULVERT - 1050 HIGH (D0)
- BOX CULVERT - 1200 HIGH (D1)
- BOX CULVERT - 1500 HIGH (D2)
- BOX CULVERT - 1800 HIGH (D3)
- BOX CULVERT - 2100 HIGH (D4)
- BOX CULVERT - 2400 HIGH (D5)
- BOX CULVERT - 2700 HIGH (D6)
- BOX CULVERT - 3000 HIGH (D7)
- BOX CULVERT - 3300 HIGH (D8)
- BOX CULVERT - 3600 HIGH (D9)
- BOX CULVERT - DIGITISED (DZ)
- BOX CULVERT - UNSPECIFIED HEIGHT (UB)
- DISH DRAIN (DD)
- DRAIN-TABLE DRAIN (DT)
- DRAINAGE BOX (DX)
- DRAINAGE JUNCTION MANHOLE (PDJM)
- DRAINAGE PIT (DP)
- END OF WINGWALL (PEWW)
- FLOOD HEIGHT (PFHT)
- GULLY PIT (IP)
- GULLY PIT POINT (PGUL)

E DRAIN (STORMWATER) Continued

- HEADWALL BOTTOM (HB)
- HEADWALL BOTTOM POINT (PHWB)
- HEADWALL TOP (HW)
- HEADWALL TOP POINT (PHWT)
- INLET TO SUMP (PILT)
- INVERT - 225 DIA (PI01)
- INVERT - 300 DIA (PI02)
- INVERT - 375 DIA (PI03)
- INVERT - 450 DIA (PI04)
- INVERT - 525 DIA (PI05)
- INVERT - 600 DIA (PI06)
- INVERT - 750 DIA (PI07)
- INVERT - 900 DIA (PI09)
- INVERT - 1050 DIA (PI10)
- INVERT - 1200 DIA (PI12)
- INVERT - 1350 DIA (PI13)
- INVERT - 1500 DIA (PI15)
- INVERT - 1650 DIA (PI16)
- INVERT - 1800 DIA (PI18)
- INVERT OF PIPE (PINV)
- INVERT OF SUBSOIL DRAIN OUTLET (PSDO)
- KERB INLET (KI)
- OBVERT OF PIPE (POBV)
- PIPE - 225 DIA (U1)
- PIPE - 300 DIA (U2)
- PIPE - 375 DIA (U3)
- PIPE - 450 DIA (U4)
- PIPE - 525 DIA (U5)
- PIPE - 600 DIA (U6)
- PIPE - 750 DIA (U7)
- PIPE - 900 DIA (U9)
- PIPE - 1050 DIA (V1)
- PIPE - 1200 DIA (V2)
- PIPE - 1350 DIA (V3)
- PIPE - 1500 DIA (V5)
- PIPE - 1650 DIA (V6)
- PIPE - 1800 DIA (V8)
- PIPE - UNSPECIFIED DIAMETER (UU)
- SUBSOIL DRAIN FLUSH POINT (PSFP)
- TOP OF CONCRETE JUNCTION BOX (PJBX)
- WATER COURSE (WC)
- WATER LEVEL POINT (PWL)

E ELEC

- CABLE JUNCTION BOX (PEJB)
 - CABLE MANHOLE (PEMH)
 - CABLE MARKER (PECM)
 - CONDUIT (ED)
 - DISTRIBUTION FUSE POINT (PEFP)
 - GARDEN LIGHT (PLGN)
 - HIGH TENSION PYLON (PHTT)
 - HOUSE CONNECTION (EY)
 - LIGHT WITH OUTREACH (LI)
 - LINE - DIGITISED (EZ)
 - LINE - MAJOR TRANSMISSION (UE)
 - LINE - MINOR TRANSMISSION (UL)
 - LINE - UNDERGROUND (EU)
 - MAIN SUMP (EN)
 - POLE - LIGHT (PLPL)
 - POLE - POWER (PPPL)
 - POLE - POWER AND LIGHT (PPLP)
 - POLE - POWER AND TRANSFORMER (PPTR)
 - POWER SERVICE PILLAR - UNDERGROUND (PEUP)
 - PYLON LEG (EL)
 - STAY ANCHOR POLE (PSAP)
 - STAY POLE (PSPL)
 - SUSPENDED LIGHT (PLSU)
 - TRANSFORMER CABINET (EC)
 - TRANSFORMER CABINET CENTRE (PETC)
- E FOTO (PHOTOGRAMMETRY)**
- HORIZONTAL CONTROL POINT (PHCP)
 - MINOR CONTROL POINT (PMCP)
 - PHOTO CENTRE (PPCN)
 - VERTICAL CONTROL POINT (PVCP)
- E GAS**
- ETHANE PIPELINE (HA)
 - HOUSE CONNECTION (DG)
 - MAIN - DIGITISED (ZG)
 - MAIN - HIGH PRESSURE PIPELINE (HG)
 - MAIN - LOW PRESSURE (LG)
 - MAIN - NYLON (NG)
 - MAIN - POLYETHYLENE (YG)
 - MANHOLE COVER (PGHL)
 - METER (PGMR)
 - PIPELINE MARKER (PGPM)
 - PIPELINE MARKER - HIGH PRESSURE (PGHM)
 - REGULATOR BOX (PGRB)
 - TEST POINT (PGTP)
 - VALVE BOX (PGAS)

E HERI (HERITAGE)

- ENDANGERED COMMUNITY (PHEC)
Phone 8837 0455
- ENDANGERED ECOLOGICAL COMMUNITY (PHEE)
Phone 8837 0455
- HAZARDOUS SITE (PHAZ)
Phone 8837 0455
- INDIGENOUS HERITAGE AREA (PHIA)
Phone 8837 0455
- NON INDIGENOUS HERITAGE SITE (PHNI)
Phone 8837 0455

PRODUCED BY rowlesm AT 19/04/2013

No.	Amendment Description	Initials	Date

A3 original This sheet may be prepared using colour and may be incomplete if copied

SCALES	
NOT TO SCALE	
Co-ordinate System: MGA Zone 56	Height Datum: A.H.D.

 Transport Roads & Maritime Services
DESIGNED, M ROWLES
REVIEWED, D JOHNSON

ROADS AND MARITIME SERVICES BELLINGEN SHIRE COUNCIL PACIFIC HIGHWAY TO CONNELLS CREEK 0.745 KM TO 3515.000 WEST OF PACIFIC HIGHWAY CONCEPT DESIGN - OPTION A SURVEY MARKINGS
--

FILE No. PM07826

E.T. STORAGE NUMBER 2010066
REGISTRATION NUMBER 2012/001086

ISSUE A	SHEET No. 15
VERSION 1	

E LNMK

	* ARROW - LEFT TURN (AL)
	* ARROW - RIGHT TURN (AR)
	* ARROW - STRAIGHT AHEAD (AS)
	* ARROW - STRAIGHT AND LEFT (AE)
	* ARROW - STRAIGHT AND RIGHT (AI)
	BARRIER AND SEPARATION (BS)
	CHEVRON MARKING LEFT (CV)
	CHEVRON MARKING RIGHT (CY)
	CLEARWAY (3x3) (CW)
	CONTINUITY (1x3) (CC)
	DOUBLE BARRIER (DB)
	GIVEWAY-TURN (CG)
	LANE (3x9) (LL)
	PEDESTRIAN CROSSING (SIGNALS) AND STOP LINE (CX)
	PEDESTRIAN CROSSING (ZEBRA) (CZ)
	PEDESTRIAN CROSSING APPROACH (ZIG ZAG) (CA)
	SEPARATION (6x6) (CN)
	SEPARATION AND BARRIER (SB)
	40 SPEED ZONE - 40KM/H (S4)
	50 SPEED ZONE - 50KM/H (S5)
	60 SPEED ZONE - 60KM/H (S6)
	70 SPEED ZONE - 70KM/H (S7)
	80 SPEED ZONE - 80KM/H (S8)
	90 SPEED ZONE - 90KM/H (S9)
	100 SPEED ZONE - 100KM/H (S1)
	110 SPEED ZONE - 110KM/H (S2)
	TRAFFIC MARKER (SILENT COP) (PTMX)
	UNBROKEN (CD)

E MARK (SURVEY MARKS)

	AP ALIGNMENT PIN (PAPN)
	BM BENCH MARK (PBMK)
	BL BOLT (PBLT)
	BP BOUNDARY PEG (PBPG)
	BROAD ARROW (PSSB)
	DH DRILL HOLE AND WING (PDHL)
	DP DUMPY PEG (PDPY)
	GI NAIL (PGIN)
	GI PIPE (PGPI)
	SM MISCELLANEOUS SURVEY MARK (PMSM)
	NA NAIL (PNAL)
	PM PERMANENT MARK (PPMK)
	RM RM CONCRETE BLOCK (PRMB)
	CM RTA CONTROL MARK (PCMK)
	SK SPIKE (PSKI)
	STAR PICKET (PSTA)
	SS STATE SURVEY MARK (PSSM)
	TS TRIG STATION-CONCRETE PILLAR (PTSS)
	WB WATER BOARD PM (PDSM)
	BH 1 BORE HOLE (PBHX)
	FLASH CAMERA - FLASH UNIT (PCFU)
	GAT GATIC COVER LID (PGAT)
	OG GOLF COURSE (OG)
	HO HIGH PRESSURE OIL PIPELINE (HO)
	HPO HIGH PRESSURE OIL PIPELINE MARK (POHM)
	HP HOTSPOT (HP)
	JL JOIN LINE (BOUNDARY) (JL)
	BR MX BREAK STRINGS (PBRK)
	OP PARK OR OPEN SPACE (OP)
	PPET PETROL PUMP (PPET)
	PHOLE POT HOLE - NULL LEVEL (PHNL)
	PHOLE 5.000 POT HOLE - WITH RL (PHRL)
	PCAM RED LIGHT-SPEED-TRAFFIC CAMERA (PCAM)
	SL SEISMIC LINE (SL)
	PSTS SEISMIC TEST SHOT (PSTS)
	US SERVICE-JUNCTION BOX (US)
	SG STOCK GRID (SG)
	OH STOCKPILE (OH)
	TP 1 TEST PIT (PGEO)
	UT UNDERGROUND TANK (UT)
	PUTP UNDERGROUND TANK POINT (PUTP)
	PPOL UNIDENTIFIED POLE (PPOL)
	PUSR UNIDENTIFIED SERVICE (PUSR)

E RAIL

	RCB RAILWAY CONTROL BOX (PRBX)
	RF RAILWAY FORMATION EDGE (RF)
	RR RAILWAY RAMP (RR)
	PRSG RAILWAY SIGNAL (PRSG)
	RS RAILWAY SIGNAL TROUGH (RS)
	PRCC RAILWAY SIGNAL TROUGH - POINT (PRCC)
	PSTR RAILWAY STANCHION (PSTR)
	RT RAILWAY TRACK CENTRE (RT)
	PRTM RAILWAY TRACK MONUMENT (PRTM)
	RA TOP OF RAIL (RA)
	PRAL TOP OF RAIL - POINT (PRAL)
	RP TOP OF RAILWAY PLATFORM (RP)

E ROAD

	BK BACK OF KERB (BK)
	RC CENTRE OF ROAD (RC)
	DW DRIVEWAY (DW)
	EJ EDGE OF FORMATION (EJ)
	EM EDGE OF MEDIAN (EM)
	EP EDGE OF PAVEMENT (EP)
	EK EDGE OF TRACK (EK)
	UR EDGE OF UNSEALED ROAD (UR)
	FP FOOTPATH (FP)
	FI GUTTER FLOW LINE (FI)
	LP LIP LINE (LP)
	OF OFFSET CROWN-CROWN (OF)
	KR PRAM RAMP (KR)
	FG SAFETY BARRIER GUARD FENCE (FG)
	KJ SAFETY BARRIER TYPE F (KJ)
	FW SAFETY BARRIER WIRE ROPE (FW)
	KB TOP OF KERB (KB)
	TM TOP OF MEDIAN (TM)
	VTE VEHICULAR TRACK EDGE (VTE)

E SEWR

	SY HOUSE CONNECTION (SY)
	PSLH LAMP HOLE (PSLH)
	SM MAIN (SM)
	SZ MAIN - DIGITISED (SZ)
	PSMH MANHOLE COVER (PSMH)
	SP SEWAGE POND (SP)
	ST SEPTIC TANK (ST)
	PSVP VENT PIPE (PSVP)

E STNS

	PSSD AP-DH-GI-PIPE OR RMCB (PSSD)
	PSSE BOLT-DUMPY-NAIL-SPIKE (PSSE)
	PSSA DEFAULT MX SURVEY MARK (PSSA)
	PSSC PEG (PSSC)
	PSSG PM SSM OR CONTROL MARK (PSSG)
	PSSF TRIG STATION (PSSF)

E TCS

	PSGL TRAFFIC CONTROL SIGNAL (PSGL)
	PSCL TRAFFIC LIGHT WITH OUTREACH (TO)
	PSDR TRAFFIC SIGNAL DETECTOR (PSDR)
	PSJX TRAFFIC SIGNAL JUNCTION BOX (PSJX)

E TEXT (Height determined by user)

	Text 1 ORANGE (*1)
	Text 2 BLACK (*2)
	Text 3 RED (*3)
	Text 4 BLUE (*4)
	Text 5 GREEN (*5)
	Text 7 CYAN (*7)

E TOPO

	BB BOTTOM OF BANK-EMBANKMENT (BB)
	NB BREAKLINE OR RIDGE (NB)
	VC CLIFF-ESCARPMENT (VC)
	JC CULTIVATION PASTURE (JC)
	EG EDGE OF GARDEN (EG)
	FO FORD (FO)
	JG GRASSLAND (JG)
	WL LAKE (WL)
	VL LANDSLIDE-ERODED BANK (VL)
	NS NATURAL SURFACE (NS)
	PNSS NATURAL SURFACE POINT (PNSS)
	JO ORCHARD (JO)
	RE RESERVOIR (RE)
	WR RIVER OR CREEK EDGE (WR)
	JR ROCK AREA (JR)
	PSHT SPOT HEIGHT (PSHT)
	JW SWAMP OUTLINE (JW)
	PSWA SWAMP-MARSH (PSWA)
	JD TIMBER OR SCRUB (DENSE) (JD)
	JM TIMBER OR SCRUB (MEDIUM) (JM)
	JS TIMBER OR SCRUB (SCATTERED) (JS)
	TC TOP OF BANK (TC)
	CU TOP OF CUTTING (CU)

E TOPO Continued

	TR TREE FOLIAGE (TR)
	PFO1 TREE FOLIAGE - 1M SPREAD (PFO1)
	PF02 TREE FOLIAGE - 2M SPREAD (PF02)
	PF03 TREE FOLIAGE - 3M SPREAD (PF03)
	PF04 TREE FOLIAGE - 4M SPREAD (PF04)
	PF05 TREE FOLIAGE - 5M SPREAD (PF05)
	PF06 TREE FOLIAGE - 6M SPREAD (PF06)
	PF07 TREE FOLIAGE - 7M SPREAD (PF07)
	PF08 TREE FOLIAGE - 8M SPREAD (PF08)
	PF09 TREE FOLIAGE - 9M SPREAD (PF09)
	PF10 TREE FOLIAGE - 10M SPREAD (PF10)
	PF12 TREE FOLIAGE - 12M SPREAD (PF12)
	PF15 TREE FOLIAGE - 15M SPREAD (PF15)

E TOPO Continued

	PT01 TREE TRUNK - 100MM DIA (PT01)
	PT02 TREE TRUNK - 200MM DIA (PT02)
	PT03 TREE TRUNK - 300MM DIA (PT03)
	PT04 TREE TRUNK - 400MM DIA (PT04)
	PT05 TREE TRUNK - 500MM DIA (PT05)
	PT06 TREE TRUNK - 600MM DIA (PT06)
	PT07 TREE TRUNK - 700MM DIA (PT07)
	PT08 TREE TRUNK - 800MM DIA (PT08)
	PT09 TREE TRUNK - 900MM DIA (PT09)
	PT10 TREE TRUNK - 1000MM DIA (PT10)
	PT12 TREE TRUNK - 1200MM DIA (PT12)
	PT15 TREE TRUNK - 1500MM DIA (PT15)
	PTRE TREE TRUNK - UNSPECIFIED DIAMETER (PTRE)
	WE WATER EDGE-LEVEL (WE)

E WATR

	PWAV AIR VALVE (PWAV)
	PRAV AIR VALVE - RECYCLED (PRAV)
	PWET EARTH TERMINAL (PWET)
	PRET EARTH TERMINAL - RECYCLED (PRET)
	PWFB FIRE HYDRANT (PWFB)
	WY HOUSE CONNECTION (WY)
	PWHT HYDRANT (PWHT)
	PRHY HYDRANT - RECYCLED (PRHY)
	WM MAIN (WM)
	WZ MAIN - DIGITISED (WZ)
	RM MAIN - RECYCLED (RM)
	PWMM MAIN MARKER (PWMM)
	PRMM MAIN MARKER - RECYCLED (PRMM)
	PWMR METER (PWMR)
	PRMR METER - RECYCLED (PRMR)
	UO OVERHEAD PIPELINE (UO)
	PWSV STOP VALVE (PWSV)
	PRSV STOP VALVE - RECYCLED (PRSV)
	PWTP TAP (PWTP)
	PRTP TAP - RECYCLED (PRTP)
	UP UNIDENTIFIED PIPELINE (UP)

* ENLARGED FOR LEGEND

PRODUCED BY rowlesm AT 19/04/2013

No.	Amendment Description	Initials	Date

SCALES	
NOT TO SCALE	
Co-ordinate System: MGA Zone 56	Height Datum: A.H.D.

	Transport Roads & Maritime Services
DESIGNED,	M ROWLES
REVIEWED,	D JOHNSON

ROADS AND MARITIME SERVICES	
BELLINGEN SHIRE COUNCIL	
PACIFIC HIGHWAY TO CONNELLS CREEK	
0.745 KM TO 3515.000 WEST OF PACIFIC HIGHWAY	
CONCEPT DESIGN - OPTION A	
SURVEY LEGEND	

FILE No.	PM07826
----------	---------

E.T. STORAGE NUMBER	2010066
REGISTRATION NUMBER	2012/001086

ISSUE	A	SHEET No.	16
VERSION	1		