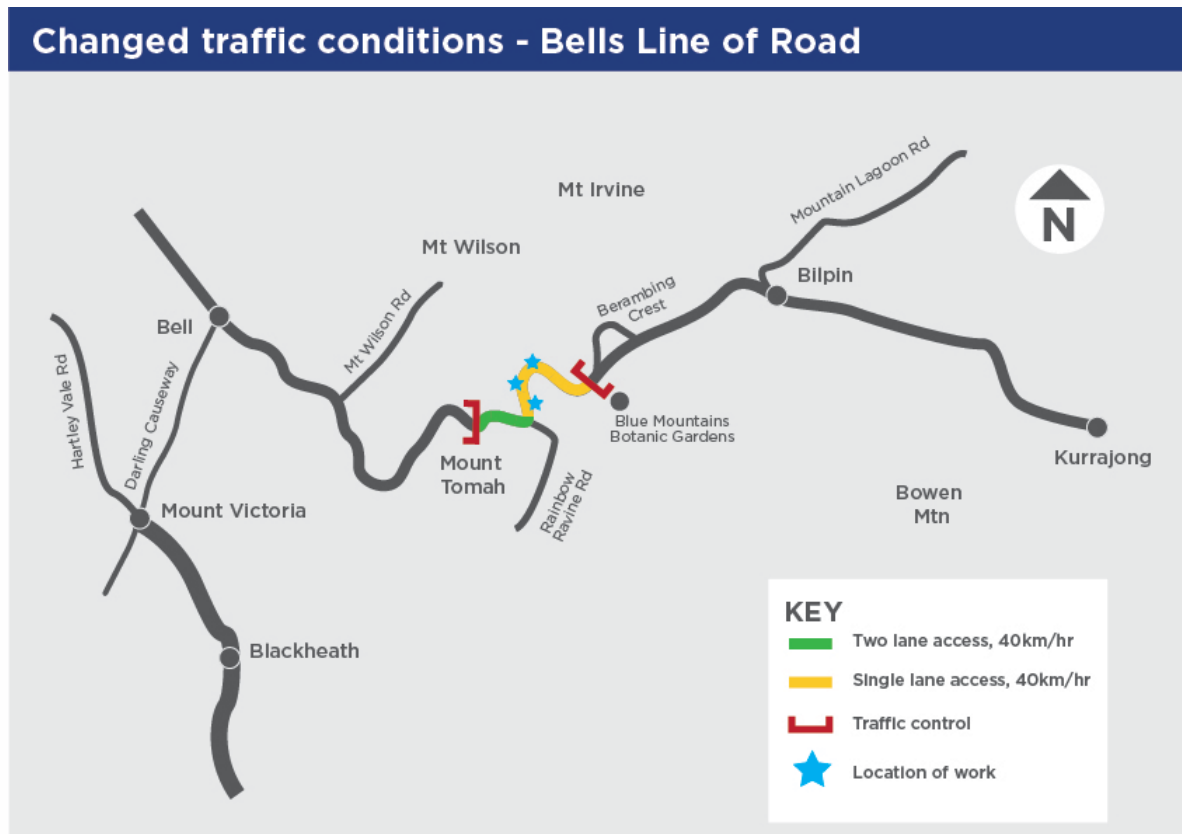


Transport for NSW has completed initial investigations and rehabilitation work, and it is now possible to travel along Bells Line of Road, under changed traffic conditions.



The impacts of the extreme weather event in March 2021 are significant and complex, and assessments are ongoing. Essential work to remove trees that presented a risk to motorists and slope stability has now been completed.

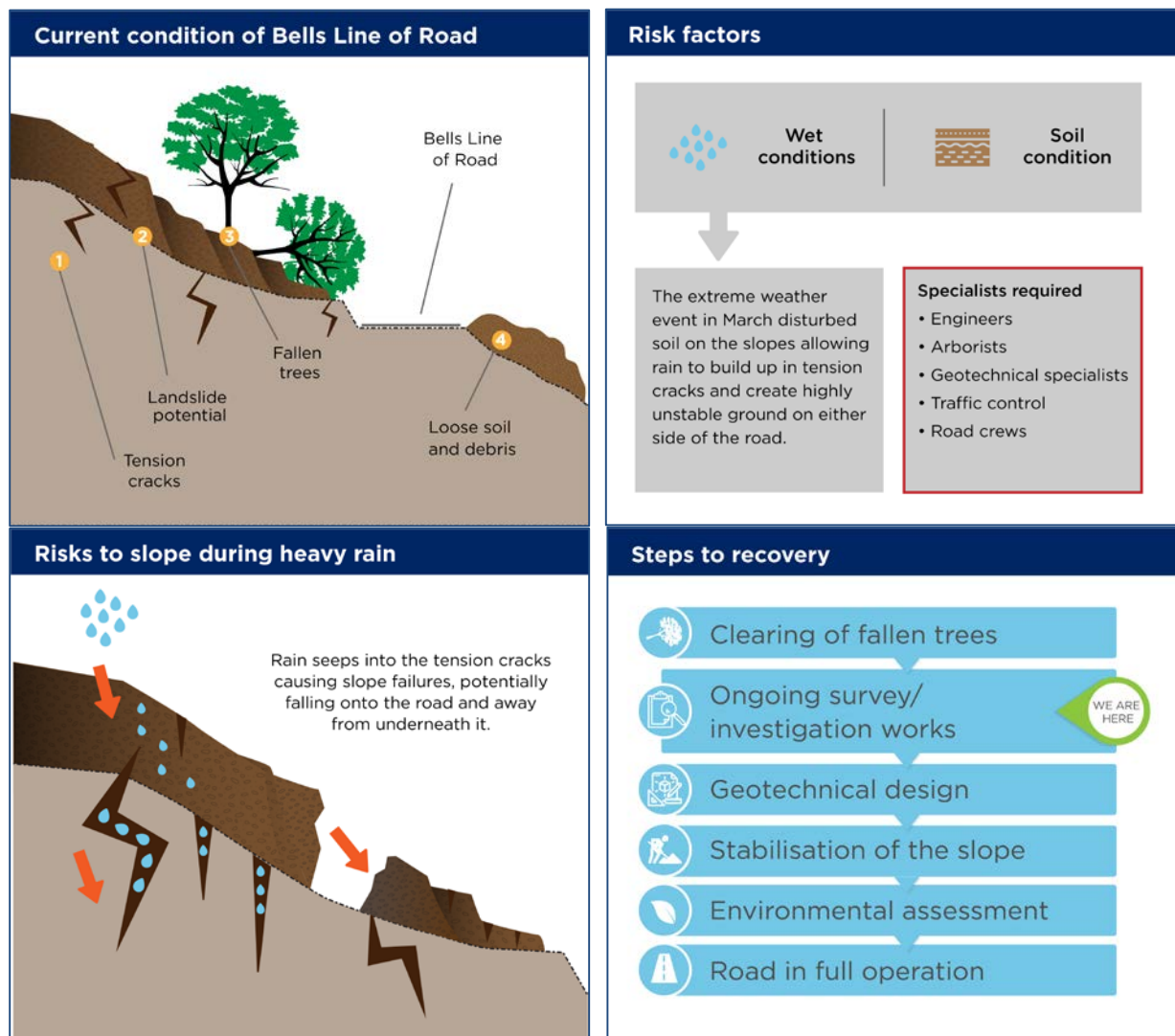
A rain gauge has been installed, and drilling investigations will take place from Tuesday 4<sup>th</sup> May. The work is expected to take 4 weeks to complete. The work will include identifying utility locations, installing a drilling rig and drilling boreholes to further inform the recently completed geotechnical assessments and help plan for future remediation work.

Temporary traffic changes will be in effect to ensure the area is safe for workers and motorists. Traffic control, single lane closures and a reduced speed limit of 40km/hr will be in place. Please keep to speed limits and follow the direction of traffic controllers and signs. Allow plenty of extra travel time.

Transport for NSW and DM Roads will notify the community of any planned road closures when they have been confirmed, however this is not expected until the end of May and the impact to traffic will be minimal.

Transport for NSW has committed all available resources to the reopening of Bells Line of Road, however, further rain may exacerbate the current damage, interrupt the planned works and result in further changed traffic conditions.

The below diagrams show the impacts of the weather event, risks and the steps to recovery.



For the latest traffic updates, call 132 701, visit [livetraffic.com](https://www.livetraffic.com) or you can download the [Live Traffic NSW](#) App.

Transport for NSW is committed to keeping the local community updated on the rehabilitation of this road, and thank you for your patience.

### Contact

Phone: 1800 332 660 Email: [enquiries\\_nsw@dmroads.com.au](mailto:enquiries_nsw@dmroads.com.au)



If you need help understanding this information, please contact the Translating and Interpreting Service on 131 450 and ask them to call 1800 332 660