

# Western Harbour Tunnel and Beaches Link

## Design and construction - Cammeray

Western Harbour Tunnel and Beaches Link is a major transport infrastructure project that makes it easier, faster and safer to get around Sydney.

As Sydney continues to grow, our transport challenge also increases and congestion impacts our economy.

While the NSW Government actively manages Sydney's daily traffic demands and major new public transport initiatives are underway, it's clear that even more must be done.

Western Harbour Tunnel and Beaches Link will forever change travel between the Northern Beaches, the North Shore and west and south of the Harbour.

It will change the way people move around Sydney.

Thanks to this major project, people will spend less time in traffic and have more time for their families and their daily lives.

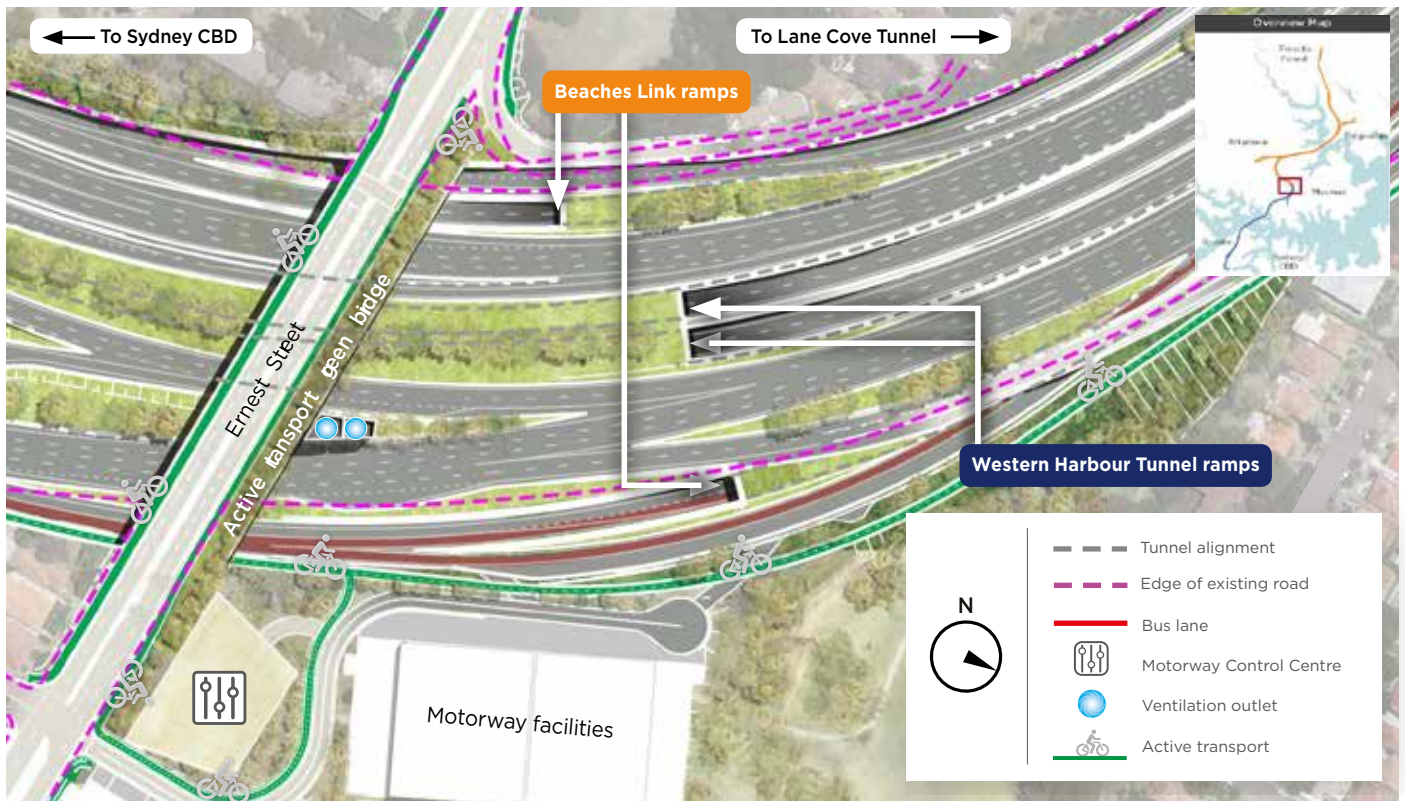
Western Harbour Tunnel and Beaches Link includes over 18 kilometres of tunnels (running under Sydney Harbour and Middle Harbour) as well as upgrading over 14 kilometres of surface roads.

These new tunnels will unlock new levels of access to jobs and services including health and education across Sydney.

Most of this project will be deep underground in tunnels and there will be surface connections at Rozelle, Cammeray, Artarmon, Seaforth and Balgowlah.

**Information on the proposed reference design is now available at [www.rms.nsw.gov.au/whtbl](http://www.rms.nsw.gov.au/whtbl)**





Motorway tunnels for both Western Harbour Tunnel and Beaches Link surface in the Warringah Freeway corridor between Ernest Street and Miller Street, North Sydney, allowing direct connections to the wider Sydney motorway network.

This area is proposed to be used as both a construction site and location of permanent facilities.

### Key features

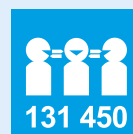
- Western Harbour Tunnel entry and exit ramps
- Beaches Link entry and exit ramps
- Underground ramps between Western Harbour Tunnel and Beaches Link
- Upgraded Ernest Street Bridge, including a 9.5-metre-wide active transport connection between Anzac Park and Cammeray Golf Course
- Motorway facilities for both Western Harbour Tunnel and Beaches Link within the existing Cammeray Golf Course and ventilation facility located in the Warringah Freeway corridor
- Western Harbour Tunnel motorway control centre next to Ernest Street near the Warringah Freeway.

### Benefits

- Improves connectivity to key employment areas of North Sydney and the Sydney CBD for Northern Beaches commuters
- Provides simple access to Western Harbour Tunnel for North Shore and Northern Beaches drivers
- Improves pedestrian and cyclist access between Cammeray Golf Course and Anzac Park – new and wider pathways connecting communities
- Tunnel ramp locations maximise the use of the existing road corridor and minimise private property acquisition requirements
- Permanent facilities in the road corridor and golf course minimise private property impacts
- Provides direct connection for southbound Beaches Link buses to the Warringah Freeway bus lane.

**You can contact us at any time to learn more about the project or to provide your feedback.**

- 🌐 [www.rms.nsw.gov.au/whtbl](http://www.rms.nsw.gov.au/whtbl)
- ☎ 1800 931 189
- @ [whtbl@rms.nsw.gov.au](mailto:whtbl@rms.nsw.gov.au)
- ✉ Customer feedback  
Roads and Maritime Services  
Locked Bag 928, North Sydney NSW 2059



This document contains important information about transport projects in your area. If you need an interpreter, please call the Translating and Interpreting Service on **131 450** and ask them to call the project team on **1800 931 189**. The interpreter will then help you with translation.

**Privacy** Roads and Maritime Services (‘RMS’) is subject to the *Privacy and Personal Information Protection Act 1998* (PPIP Act) which requires that we comply with the Information Privacy Principles set out in the PPIP Act. All information in correspondence is collected for the sole purpose of assisting the assessment of this proposal. The information received, including names and addresses of respondents, may be published in subsequent documents unless a clear indication is given in the correspondence that all or part of that information is not to be published. Otherwise RMS will only disclose your personal information, without your consent, if authorised by the law. Your personal information will be held by RMS. You have the right to access and correct the information if you believe that it is incorrect.