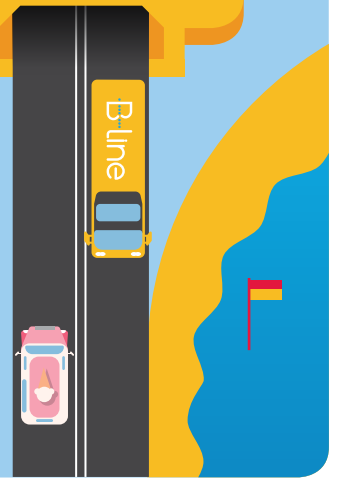




Beaches Link

Marine monitoring - Navigation restrictions



The Western Harbour Tunnel and Beaches Link program is a major transport infrastructure program that will make it easier, faster and safer to get around Sydney. By creating a western bypass of the Sydney CBD, the Western Harbour Tunnel will take pressure off the congested Sydney Harbour Bridge, Sydney Harbour Tunnel and Anzac Bridge; while Beaches Link will create an alternative to the Military Road and Warringah Road corridors to relieve traffic pressure on the North Shore.

A program of this scale is expected to support up to 15,000 full-time-equivalent jobs during its construction.

Beaches Link is an integrated transport solution that will improve car and bus journey times to and from the Northern Beaches. It will also provide new connections to St Leonards and Macquarie Park, linking people with jobs, education and services. The project will deliver significant travel time savings for customers, including Brookvale to Sydney CBD up to 27 minutes, Dee Why to Sydney Kingsford Smith Airport up to 56 minutes, Frenchs Forest to Rozelle up to 54 minutes and Manly to Macquarie Park up to 32 minutes.

Updated Notification

As you may know, we will be carrying out marine monitoring in Middle Harbour to provide important information to help our ongoing planning for the Beaches Link project. There will be some navigation restrictions to allow the monitoring to take place safely. We had previously notified you of this work in April 2020, however, we have now found more suitable locations for our work. The change in the locations resulted in a delayed start to our work. The following information provides the new work schedule and adjusted monitoring buoy locations.

Our new work locations are shown on the map on the following page.

Currently infrastructure construction projects are considered essential to the economy and will continue as planned across the city and the state.

The safety and wellbeing of our workforce and the wider community is our highest priority. Our people are following hygiene and appropriate social distancing measures and will continue to do so.

Our work schedule

Please be advised that two marine monitoring buoys in Middle Harbour were deployed from **Tuesday 28 April 2020** and will remain in place **until Sunday 31 May 2020**.

What we are doing

As with the previous locations, the new locations will allow us to avoid permanent moorings and high-traffic areas. They are also expected to have limited impact on marine traffic and to be clearly visible at all times. Both sites will be marked with a yellow surface buoy fitted with a yellow navigation light set to slow flash as a special mark. These will be located at:

- Site 1 - 33.81107°S, 151.25074°E
- Site 2 - 33.80591°S, 151.23323°E

For Site 1, marine traffic is on the Clontarf Point side of the channel, and for Site 2 marine traffic is on the Seaforth Bluff side of the channel.

How will the work affect you?

Our work will mean there will be some impacts on navigation in Middle Harbour.

All vessel operators and persons in the vicinity must keep a proper lookout, keep clear of the buoys, pay particular attention to construction work vessels and any advisory signage and exercise extreme caution when navigating in the area. This navigation restriction and warning remains in place for the duration of the work.

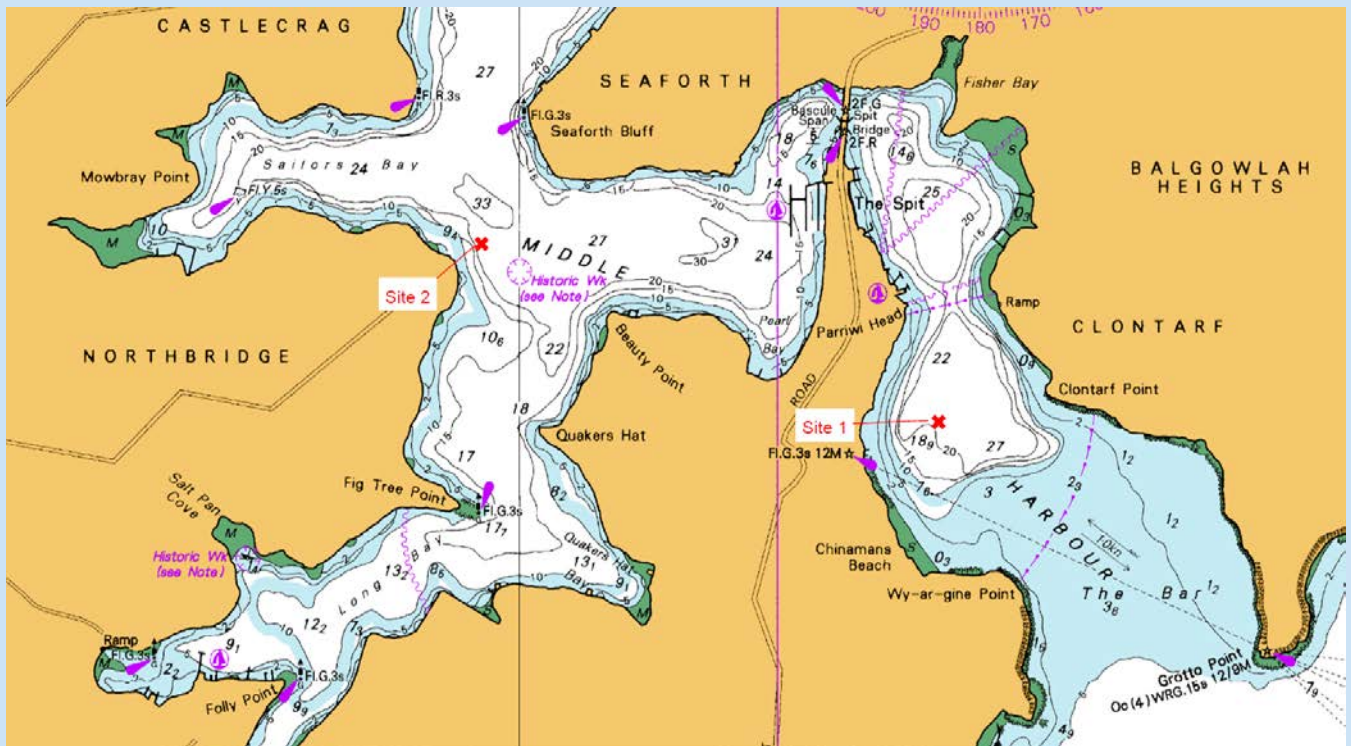
The health and safety of the local community is our priority. To ensure the monitoring is carried out safely, please be advised:

- a) Persons within the vicinity of the buoys must comply with any directions given by a Boating Safety Officer or Police Officer in relation to the work or to marine safety. Failure to comply with any such direction is an offence (Marine Safety Act 1998, s.15A – Maximum Penalty \$3,300.00).
- b) Vessels are required to maintain a safe distance and speed from the buoys and operators are reminded the production of wash that impacts unreasonably on the work is an offence (Marine Safety Regulation 2016 – clause 11(2) – Maximum Penalty \$5,500.00)





Maps and charts affected – Navigation Chart AUS 200, Transport for NSW Boating Map – 9D

For further information concerning this Navigation Restriction, please contact Transport for NSW (Maritime) on 13 12 36.

Location of marine monitoring buoys



Contact the Western Harbour Tunnel and Beaches Link team

-  nswroads.work/whtbl
-  whtbl@transport.nsw.gov.au
-  1800 931 189
-  Customer feedback
Transport for NSW, Locked Bag 928, North Sydney NSW 2059



If you need help understanding this information, please contact the Translating and Interpreting Service on 131 450 and ask them to call us on 1800 931 189.

Privacy Transport for NSW is subject to the Privacy and Personal Information Protection Act 1998 ("PIIP Act") which requires that we comply with the Information Privacy Principles set out in the PIIP Act. All information in correspondence is collected for the sole purpose of assisting the assessment of this proposal. The information received, including names and addresses of respondents, may be published in subsequent documents unless a clear indication is given in the correspondence that all or part of that information is not to be published. Otherwise Transport for NSW will only disclose your personal information, without your consent, if authorised by the law. Your personal information will be held by Transport for NSW. You have the right to access and correct the information if you believe that it is incorrect.