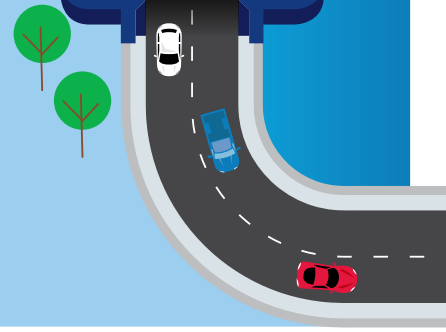




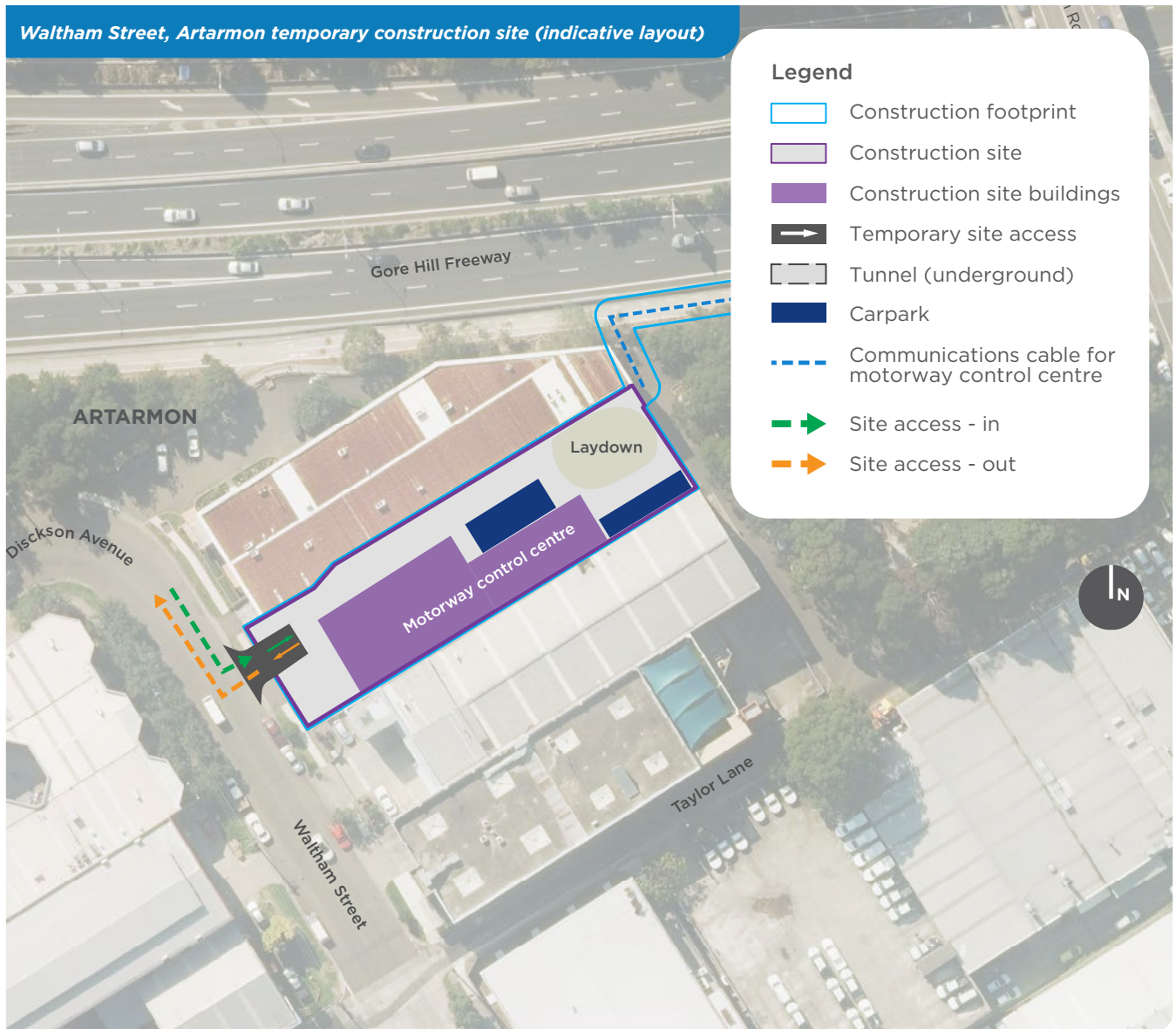
Western Harbour Tunnel and Warringah Freeway Upgrade



Artarmon temporary construction site

We will use the Waltham Street temporary construction site for building and housing the motorway control centre for the Western Harbour Tunnel. The motorway control centre will operate 24 hours a day and play a vital role in monitoring and responding to conditions in our tunnels and on surface roads.

Waltham Street, Artarmon temporary construction site (indicative layout)

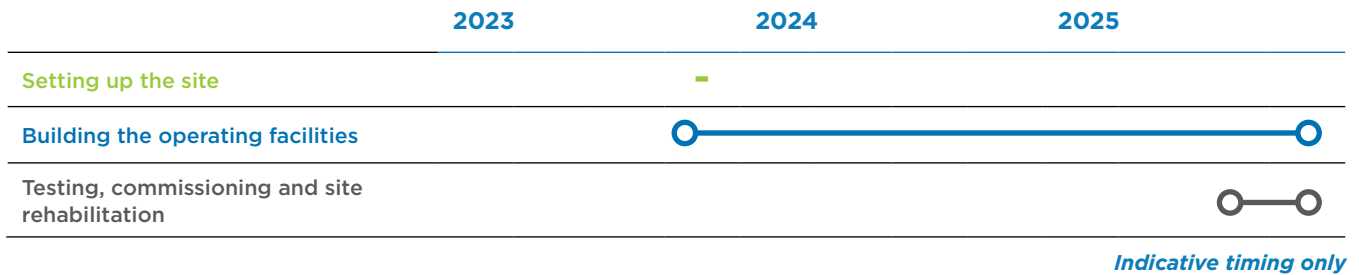


We will use the Waltham Street temporary construction site for building and housing the motorway control centre for the Western Harbour Tunnel. The motorway control centre will operate 24 hours a day and play a vital role in monitoring and responding to conditions.

Our key activities include:

- excavating and installing the footing and base concrete slab; installing security fencing
- building concrete columns, deck and roof
- internal fitout of motorway control centre and other amenities, landscaping and planting around the site
- equipment laydown, car parking for our construction vehicles and temporary site office buildings.

Indicative construction timeframe for Waltham Street



Duration



You may see us in this area for around two and a half years as we set-up, carry out our construction work and then demobilise the site.

Hours of work



Our general site activities will be carried out during standard construction hours.

Traffic / vehicle movements



Access in and out of the site will be via Waltham Street.

The construction peak at this site will be when we are building the operating facilities.

At our construction peak, there will be around 65 heavy vehicle movements and 180 light vehicle movements per day (a vehicle travelling in and out of the site is counted as two movements). For information about peak vehicle movements during construction, please see page 33 of our 'Guide to the EIS' nswroads.work/whtportal-eisguide.

So we have suitable access to this site, we need to temporarily remove around 10 parking spaces on Dickson Avenue/Waltham Street.

Noise and vibration



While we are building we will monitor noise and vibration to make sure it meets the appropriate guidelines. We will be using a range of measures to reduce the impact of our work, including:

- additional notification and consultation
- using acoustic sheds for 24 hour tunnelling activities
- laying out our sites so noisy equipment is shielded by other buildings
- turning off machinery and equipment when not in use
- working within standard construction hours
- staging our work to avoid extended periods of consecutive night work in one area
- installing hoards and temporary noise barriers.

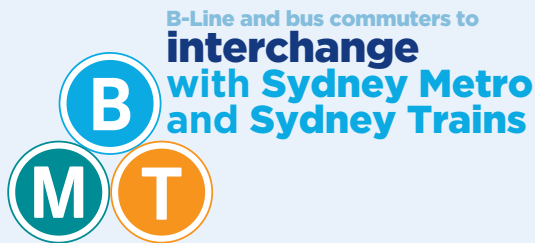
You can learn more about how we measure and manage noise by visiting our interactive portal nswroads.work/whtportal or by reading section 3 of our 'Guide to the EIS' nswroads.work/whtportal-eisguide.

Integrated transport



We have designed the project to **integrate with the broader public transport network** to provide significant travel time savings and reliability benefits

You will experience **improved public transport connections** with quicker access to interchanges and a new, direct connection to North Sydney



We will be providing opportunities for **new direct bus routes** between the Inner West and North Sydney using the Western Harbour Tunnel



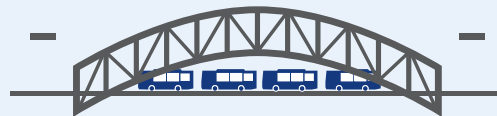
You will see **improvements to walking and cycling routes**, providing you with more shared transport options



You will experience **faster and more reliable bus journeys** across the bridge with a continuous southbound bus lane from Miller Street to the Sydney Harbour Bridge



Your bus trips on the Sydney Harbour Bridge, Anzac Bridge and other surface corridors will be **faster and more reliable with reduced congestion on existing roads**



How to make a submission

How to make an online submission

1. Visit DPIE's Major Projects website at planningportal.nsw.gov.au/major-projects
2. Create a user account by clicking the 'Sign In' icon in the top right of the homepage or under the 'Services' tab and then click the 'Have Your Say' link
3. When you are logged in, find the Western Harbour Tunnel and Warringah Freeway Upgrade project, and click the 'Make a Submission' icon.

How to make a hard copy submission

You can submit a hard copy of your submission. If you want DPIE to delete your personal information before publication, please make this clear at the top of your letter.

You need to include:

1. your name and address, at the top of the letter only
2. the name of the application and application number: **SSI_8863**
3. a statement on whether you support or object to the proposal
4. the reasons why you support or object to the proposal
5. a declaration of any reportable political donations made in the previous two years.

You can hand deliver your submission to DPIE's office, located at:

4 Parramatta Square, 12 Darcy Street
Parramatta NSW 2150

You can post your submission to:

Attention: Director, Transport Assessments
Planning & Assessment, Department of Planning
Industry and Environment
Locked Bag 5022
Parramatta NSW 2124

Donations and Gift Disclosure

Anyone lodging submissions must declare reportable political donations made in the previous two years. To find out what is reportable, and for a disclosure form, go to planning.nsw.gov.au/donationsandgiftdisclosure or phone 1300 305 695 for a copy.

Note: the disclosure requirements apply however a submission is made.

Privacy

Before making your submission, please read DPIE's Privacy Statement at planning.nsw.gov.au/privacy or phone 1300 305 695 for a copy. DPIE will publish your submission on its website in accordance with their Privacy Statement.


Submissions must be received by DPIE before midnight 12 March 2020.

Contact the Western Harbour Tunnel and Beaches Link team

 nswroads.work/whtbl

 whtbl@transport.nsw.gov.au

 1800 931 189

 Customer feedback
Transport for NSW, Locked Bag 928
North Sydney NSW 2059

Visit our interactive web portal

Read the EIS, find out more or ask our team a question.

 nswroads.work/whtportal



If you need help understanding this information, please contact the Translating and Interpreting Service on 131 450 and ask them to call us on 1800 931 189.

Privacy Transport for NSW is collecting your personal information in connection with the Western Harbour Tunnel and Warringah Freeway Upgrade ("the Project"). In addition to collecting your name and contact details we may collect other information such as your submissions and other communications with us. We will retain and use this information for consultation purposes, including communications and analysis in connection with the Project. We will not disclose your personal information to third parties unless authorised by law and if we include your submissions in any public report we will not identify you. Providing your personal information is voluntary but if you do not provide it we may not include you on our stakeholder database and you might miss further consultation opportunities. Your personal information will be held by us and you can contact us to access or correct it. Please write to us at either whtbl@transport.nsw.gov.au or Transport for NSW, Locked Bag 928, North Sydney NSW 2059.