



Beaches Link

Community Update

The Western Harbour Tunnel and Beaches Link Program is a major transport infrastructure program that will make it easier, faster and safer to get around Sydney. By creating a western bypass of the Sydney CBD, the Western Harbour Tunnel will take pressure off the congested Sydney Harbour Bridge, Sydney Harbour Tunnel and Anzac Bridge; while Beaches Link will create an alternative to the Military Road and Warringah Road corridors to relieve traffic pressure on the North Shore.

Beaches Link is an integrated transport solution that will improve car and bus journey times to and from the Northern Beaches. It will also provide new connections to St Leonards and Macquarie Park linking people with jobs, education and services. The project will deliver significant travel time savings for customers, including Brookvale to Sydney CBD up to 27 minutes, Dee Why to Sydney Kingsford Smith Airport up to 56 minutes, Frenchs Forest to Rozelle up to 54 minutes and Manly to Macquarie Park up to 32 minutes.

A program of this scale is expected to support up to 15,000 full time equivalent jobs during its construction.

Currently infrastructure construction projects are considered essential to the economy and will continue as planned across the city and the state.

Beaches Link Environmental Impact Statement

Following community feedback on the Proposed Reference Design released in 2018, we announced some refinements to the design in November 2019, which included updating some construction sites and design features. These refinements required more time for us to carry out the necessary investigations, assessment and documentation to prepare the Environmental Impact Statement (EIS) for public exhibition.

Thank you for your patience while we refined this design. We expect the Beaches Link EIS to be available for public exhibition later this year. You will have another opportunity during this exhibition process to provide your valuable feedback and we encourage you to have your say during this time.



Save time
on your journeys



Project benefits

Oxford Falls

Beaches Link is an integrated transport solution that will improve car and bus journey times to and from the Northern Beaches. It will also provide new connections to St Leonards and Macquarie Park linking people with jobs, education and services.



Connecting the Northern Beaches, south and west

- bypassing 19 sets of traffic lights through The Spit, Mosman and Neutral Bay
- improved connections to North Sydney and Sydney CBD
- new connections to St Leonards and Macquarie Park
- access to motorway network for faster journeys across Sydney.



More reliable North Shore trips

- reduced pressure on key main roads - Military Road and Warringah Road
- greater resilience to incidents and delays
- reduced rat-run traffic on local roads - Eastern Valley Way, Frenchs Forest Road and Ourimbah Road.



Returning streets to local communities

- less rat-running through local streets
- reduced traffic on arterial corridors.



Better access to jobs and business

- over 15 per cent more Northern Beaches residents will be within 45 minutes of a commute to work
- local Northern Beaches businesses will benefit from better access to Greater Sydney
- more direct access will be available for movement of goods and services.



Travel time savings

- 🕒 Brookvale to Sydney CBD up to 27 minutes
- 🕒 Dee Why to Sydney Kingsford Smith Airport up to 56 minutes
- 🕒 Frenchs Forest to Rozelle up to 54 minutes
- 🕒 Manly to Macquarie Park up to 32 minutes



New community open space

- opportunity for new open space at the Balgowlah Golf Course site
- new shared path along the Wakehurst Parkway, connecting Seaforth with the Northern Beaches Hospital precinct.

opportunities for express buses

Manly and Northern Beaches

St Leonards
North Sydney
City

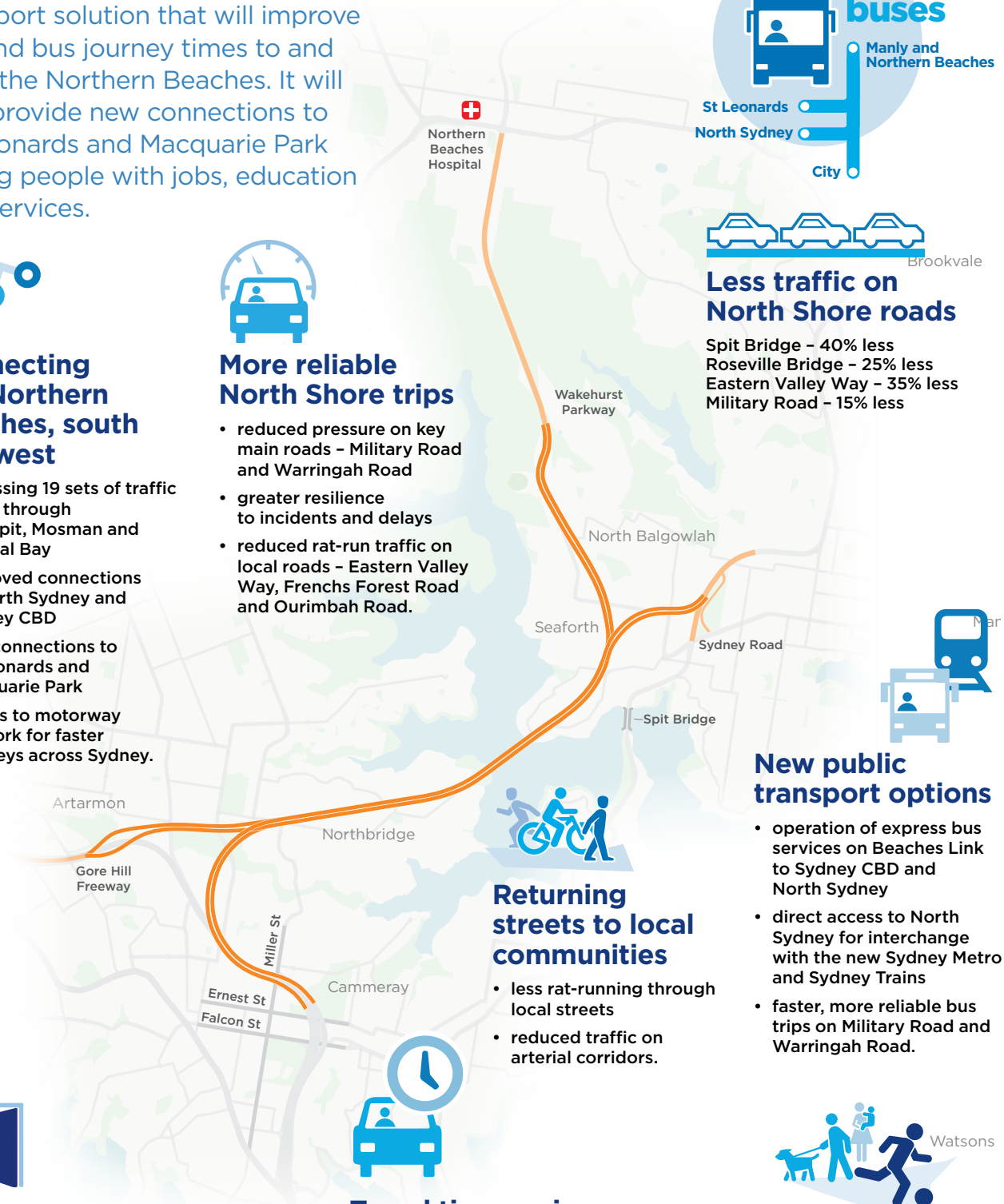
Less traffic on North Shore roads

Spit Bridge - 40% less
Roseville Bridge - 25% less
Eastern Valley Way - 35% less
Military Road - 15% less



New public transport options

- operation of express bus services on Beaches Link to Sydney CBD and North Sydney
- direct access to North Sydney for interchange with the new Sydney Metro and Sydney Trains
- faster, more reliable bus trips on Military Road and Warringah Road.



Proposed design - as of November 2019



Balgowlah site post project completion. Indicative layout only – subject to further community consultation.

Your new open space in Balgowlah

We will return almost 90 per cent of the open space we use during construction as a new sporting and recreational precinct for Balgowlah.

We are working collaboratively with the Northern Beaches Council and plan to have over half of the recreational precinct open for you to use around two years after we start construction, three to four years earlier than we originally planned.

We are committed to working with you to understand your views, so we can provide a sporting and recreational precinct for everyone to enjoy.



How you can be involved

We will have a dedicated consultation period to give you an opportunity **to have your say on the final layout of the sporting and recreational facilities**. This consultation will be separate to the consultation for the Beaches Link EIS.

This consultation will be **delivered in collaboration with Northern Beaches Council**. We will start this process after the EIS public exhibition period and well in advance of construction starting.

As part of this consultation process, we will establish a community reference group, with representative stakeholder groups and the community, to support us and Council with the development of this important open space in Balgowlah. More details about the community reference group will be communicated at a later date.

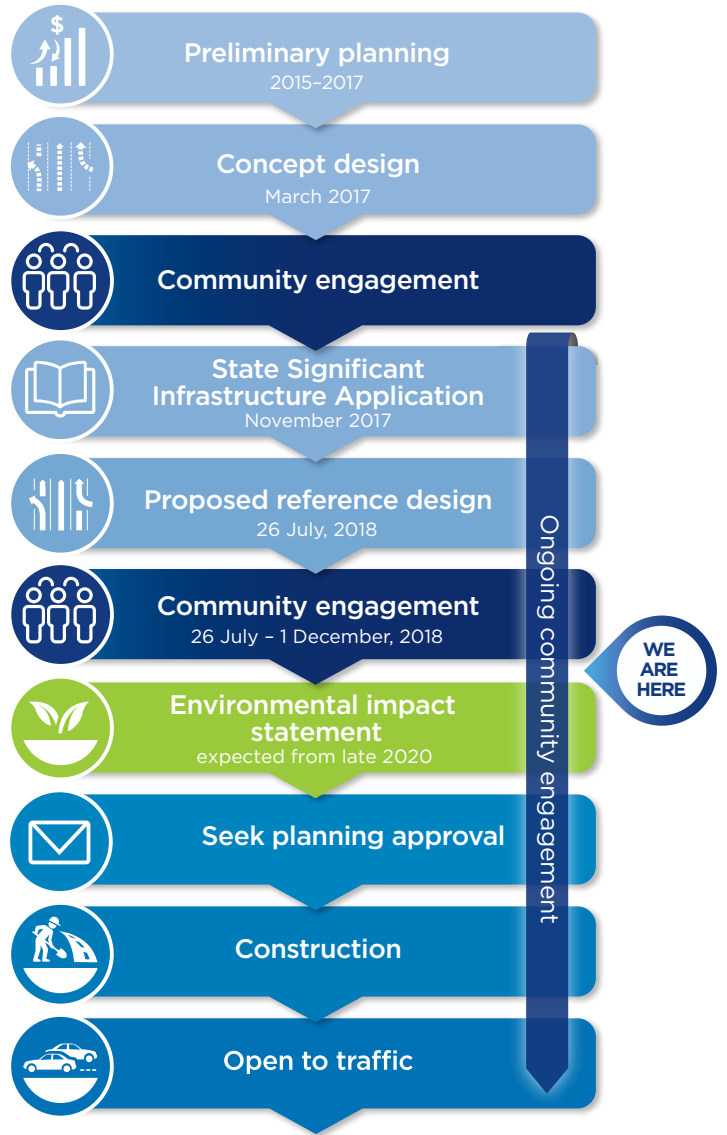
Western Harbour Tunnel and Warringah Freeway Upgrade update

The Western Harbour Tunnel and Warringah Freeway Upgrade Environmental Impact Statement (EIS) was on public exhibition from 29 January to 30 March 2020. We would like to thank the community for their submissions and feedback.

Community submissions will be addressed via a Response to Submissions Report which we are currently preparing and will release soon. The Report will be submitted to the Department of Planning, Industry and Environment, which helps to inform the Conditions of Approval and the Minister for Planning and Public Spaces decision on the project.

Next steps for Beaches Link

Thank you for your patience while we refined the design and prepare for the Beaches Link EIS. **We expect the Beaches Link EIS to be available for public exhibition later this year.** You will have another opportunity during this exhibition process to provide your valuable feedback and we encourage you to have your say during this time.



Contact the Western Harbour Tunnel and Beaches Link team

- nswroads.work/whtbl
- whtbl@transport.nsw.gov.au
- 1800 931 189
- Customer feedback
Transport for NSW, Locked Bag 928
North Sydney NSW 2059



Visit our interactive web portal
nswroads.work/whtportal



If you need help understanding this information, please contact the Translating and Interpreting Service on 131 450 and ask them to call us on 1800 931 189.

Privacy Transport for NSW ("we") collects the personal information of those who contact us in connection with the Western Harbour Tunnel and Beaches Link ("the Program"). In addition to collecting your name and contact details, we may collect other information, such as your submissions and other communications with us. We will retain and use this information for consultation purposes, including communications and analysis in connection with the Program. We will not disclose your personal information to third parties unless authorised by law and if we include your submissions in any public report we will not identify you. Providing your personal information is voluntary but if you do not provide it we may not include you on our stakeholder database and you might miss further consultation opportunities. Your personal information will be held by us and you can contact us to access or correct it. Please email us at whtbl@transport.nsw.gov.au, write to us at Transport for NSW, Locked Bag 928, North Sydney NSW 2059, or call us on 1800 931 189.