



Western Harbour Tunnel and Warringah Freeway Upgrade

Upcoming investigation work for the Warringah Freeway Upgrade

The Western Harbour Tunnel and Beaches Link program is a major transport infrastructure program that will make it easier, faster and safer to get around Sydney. By creating a western bypass of the Sydney CBD, the Western Harbour Tunnel will take pressure off

the congested Sydney Harbour Bridge, Sydney Harbour Tunnel and Anzac Bridge; while Beaches Link will create an alternative to the Military Road and Warringah Road corridors to relieve traffic pressure on the North Shore.

A program of this scale is expected to support up to 15,000 full-time equivalent jobs during its construction.

Over the next two months, we will be carrying out survey investigation work to help inform the ongoing planning for the Western Harbour Tunnel and Warringah Freeway Upgrade project.

When will we be working?

This work will start in early September 2020 and take about two months to complete, weather permitting. Most of our work will take place during the day from 7:00am to 6:00pm Monday to Friday and from 8:00am to 1:00pm on Saturdays. We may need to carry out some work at night.

What will the work involve?

Surveying will involve measurement and mapping of the land using specialist equipment. There will usually be two workers using a tripod.

Where we will be working?

We will be working in various locations around North Sydney, Cammeray and Naremburn. Work will be done in the following streets:

- Pacific Highway and Berry Street North Sydney
- High Street North Sydney
- Mount Street North Sydney
- Alfred Street North Sydney
- Ernest Street Cammeray
- St Leonards Park North Sydney
- Cammeray Golf Course North Sydney
- Gore Hill Freeway/Warringah Freeway Naremburn

We have included a map to show you where we will be working.

How will the work affect you?

While most of our work will be carried out during the day, to maintain safety and capacity on the road network when we are working near live traffic we may need to work at night. Working next to and on existing roads, means traffic may need to be slowed or the number of lanes reduced, while work is carried out. By working at night, delays are minimised and journey times for motorists are less affected.

If night work is required, directly affected properties will be notified.

Will there be changes to traffic?

There may be some areas where we will require traffic control for everyone's safety.

For the latest traffic updates:

Call **132 701**

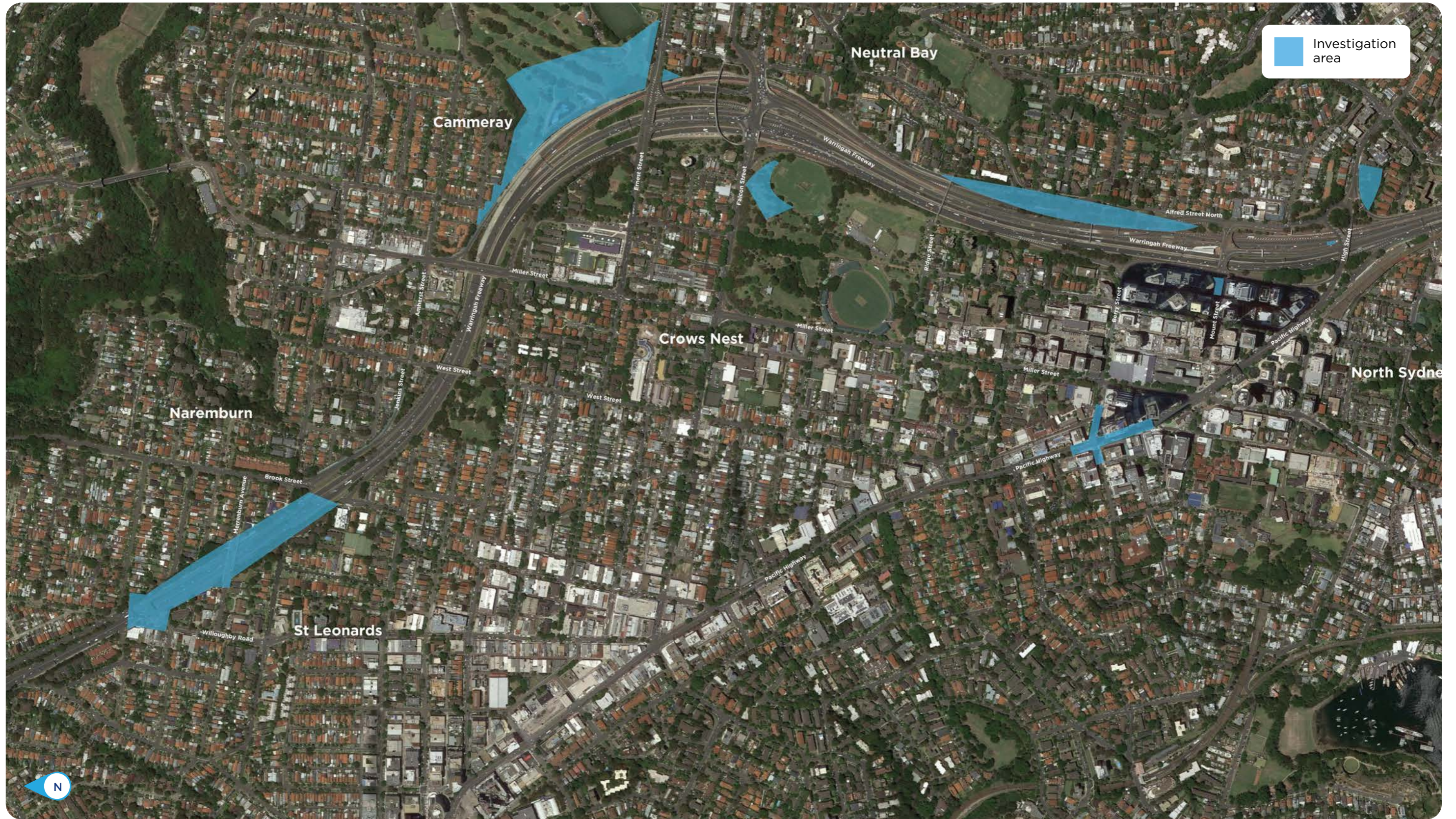
Visit www.livetraffic.com

Download the App

Live Traffic NSW



Survey areas



Want to stay in touch?





If you would like to be kept up to date on when the work is happening next to you or at night, please **contact the project team on 1800 931 189 or via whtbl@transport.nsw.gov.au and register for updates.**

Supporting NSW amid COVID-19

The health and safety of our workforce and the wider community will be top of mind as we carry out our work. This will include ensuring our workers follow the appropriate hygiene and social distancing guidelines.



Contact the Western Harbour Tunnel and Beaches Link team

-  nswroads.work/whtbl
-  whtbl@transport.nsw.gov.au
-  1800 931 189
-  Customer feedback
Transport for NSW, Locked Bag 928
North Sydney NSW 2059



Visit our interactive web portal

 nswroads.work/whtblportal



If you need help understanding this information, please contact the Translating and Interpreting Service on 131 450 and ask them to call us on 1800 931 189.

Privacy Transport for NSW ("we") collects the personal information of those who contact us in connection with the Western Harbour Tunnel and Beaches Link ("the Program"). In addition to collecting your name and contact details, we may collect other information, such as your submissions and other communications with us. We will retain and use this information for consultation purposes, including communications and analysis in connection with the Program. We will not disclose your personal information to third parties unless authorised by law and if we include your submissions in any public report we will not identify you. Providing your personal information is voluntary but if you do not provide it we may not include you on our stakeholder database and you might miss further consultation opportunities. Your personal information will be held by us and you can contact us to access or correct it. Please email us at whtbl@transport.nsw.gov.au, write to us at Transport for NSW, Locked Bag 928, North Sydney NSW 2059, or call us on 1800 931 189.