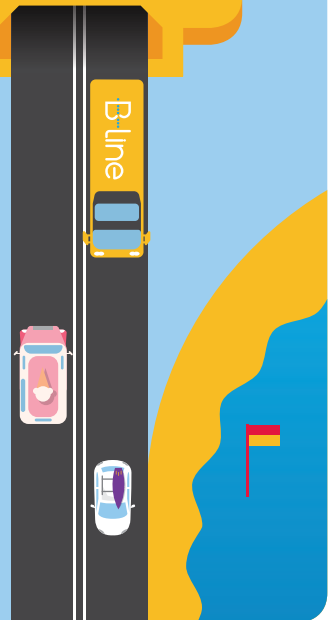




Beaches Link

Seaforth and Frenchs Forest fact sheet



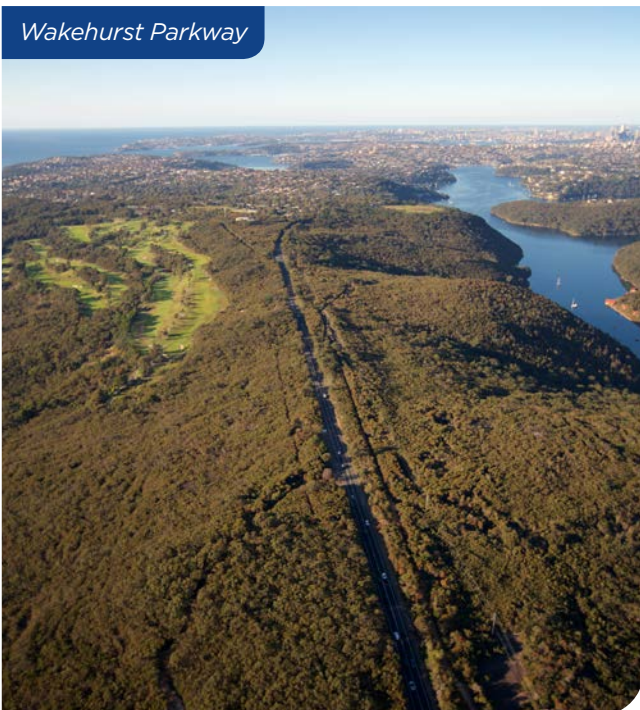
Beaches Link will revolutionise how we move between the Northern Beaches and the rest of Sydney, by providing a new high capacity road that has been designed to integrate with the public transport network.

It will provide a new crossing of Middle Harbour connecting Frenchs Forest, Seaforth and Balgowlah to Artarmon and Cammeray, where it will connect to the Western Harbour Tunnel and Warringah Freeway.

Beaches Link is designed to improve and expand the express bus network, including enhancing B-Line to provide travel time savings of up to 40 per cent for bus users.

You will have a more reliable trip, bypassing 19 sets of traffic lights through The Spit, Mosman and Neutral Bay. The program will save up to 54 minutes on a trip between Frenchs Forest and Rozelle and up to 32 minutes between Manly and Macquarie Park.

Wakehurst Parkway



What this means for you

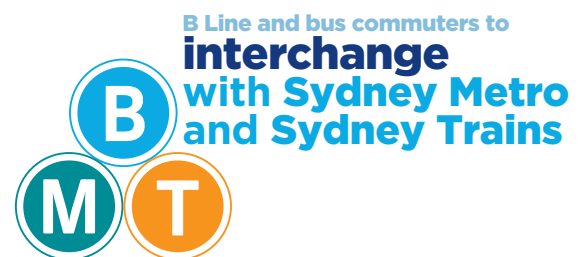
You will benefit from improved public transport connections.

By widening The Wakehurst Parkway to two-lanes in each direction between the tunnel ramps and Warringah Road, there will be opportunities for new express bus routes connecting Frenchs Forest to the new Sydney Metro at North Sydney and Macquarie Park.

There will be reduced traffic on surface arterial roads including Roseville Bridge, and from Wakehurst Parkway to Spit Bridge along Frenchs Forest Road through Seaforth town centre. We are expecting a 25 per cent reduction in traffic on Roseville Bridge and 15 per cent on Military Road.

We're delivering a new shared path on the eastern side of Wakehurst Parkway between Seaforth and the new Northern Beaches Hospital precinct. A number of underpasses for safe crossing of Wakehurst Parkway will ensure that the trails in Garigal National Park and Manly Dam reserve are safely connected.

We will also build new wildlife crossings over and under the widened Wakehurst Parkway to ensure native fauna can cross the road safely.



Temporary Wakehurst Parkway construction site

The Beaches Link Reference Design has the tunnel entry and exit ramps at Seaforth, including the ventilation outlets, about 500 metres further north along Wakehurst Parkway. This significant design change was adopted following community engagement on the concept design in 2017.

Our Proposed Reference Design in 2018 included two options for temporary tunnelling construction sites at Seaforth:

- 'Option A', on the western side of Wakehurst Parkway beside Seaforth Oval
- 'Option B', on the eastern side of Wakehurst Parkway, behind the Bantry Bay reservoir to the north of Kirkwood Street.

A construction site in this area is important so we can excavate the tunnel south and meet the tunnel from Balgowlah.

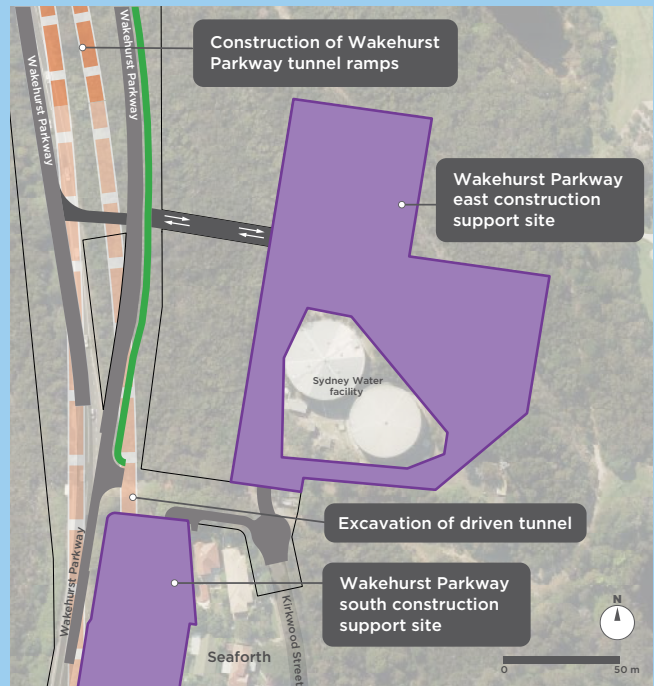
Following our engagement with the local community in the Seaforth area, **we have selected the site at 'Option B' on the eastern side of Wakehurst Parkway.**

We chose this site because it is further from people's homes and Seaforth Oval. After construction, we will hand this land to the Manly Dam Reserve for the community to enjoy.

Construction traffic changes

Your feedback has also helped us refine how our construction vehicles will access the site. Heavy vehicles will access the site directly from Wakehurst Parkway to the north of Kirkwood Street rather than via Kirkwood Street itself to reduce construction traffic on local roads.

Based on your feedback, we are also proposing to keep the intersection of Wakehurst Parkway and Judith Street open and close the intersection of Wakehurst Parkway and Kirkwood Street for the duration of construction.



Next steps

Thank you for your patience while we refined the design. This gave us the opportunity to consider community feedback and wherever possible reduce the impact of the project.

Now we have updated the Reference Design for Beaches Link, it will take us more time to finalise the Environmental Impact Statement (EIS) for public exhibition. This will allow us to complete the necessary investigations and assessment work, and prepare the appropriate documentation.

The EIS assesses the expected impacts of the construction and operation of this project including environmental and social, proposed locations for construction sites, truck movements and how we are managing the potential impacts to local flora and fauna.

We are expecting the Beaches Link EIS to be on public exhibition from mid-2020, when you will be invited to make a submission.

Contact the Western Harbour Tunnel and Beaches Link team


Never miss an update

Please be sure to sign up to our distribution list. By signing up you'll never miss an update about the project. You can call, email or write to us to let us know your details.

 rms.nsw.gov.au/whtbl

 whtbl@rms.nsw.gov.au

 1800 931 189

 Roads and Maritime Services
Locked Bag 928, North Sydney NSW 2059



If you need help understanding this information, please contact the Translating and Interpreting Service on 131 450 and ask them to call us on 1800 931 189.

Privacy Roads and Maritime Services, is collecting your personal information in connection with the Western Harbour Tunnel and Warringah Freeway Upgrade ("the Project"). In addition to collecting your name and contact details we may collect other information such as your submissions and other communications with us. We will retain and use this information for consultation purposes, including communications and analysis in connection with the Project. We will not disclose your personal information to third parties unless authorised by law and if we include your submissions in any public report we will not identify you. Providing your personal information is voluntary but if you do not provide it we may not include you on our stakeholder database and you might miss further consultation opportunities. Your personal information will be held by us and you can contact us to access or correct it. Please write to us at either whtbl@rms.nsw.gov.au or Roads and Maritime Services, Locked Bag 928, North Sydney NSW 2059. RMS.19.1487