



## Sea bed investigations in Sydney Harbour from Monday 16 September

September 2019

Western Harbour Tunnel and Beaches Link is an important part of our vision to create an integrated road and public transport network, which balances the needs of motorists and local communities.

As part of our project, we are carrying out further marine investigations to collect more information about the ground conditions in Sydney Harbour. This information will be used to help us refine our design.

We will be starting these investigations in Sydney Harbour between Birchgrove and Waverton from Monday 16 September, weather permitting.

### When will we be working?

This work will take about four weeks to finish, weather permitting. We've included a map over the page to show you where we will be working.

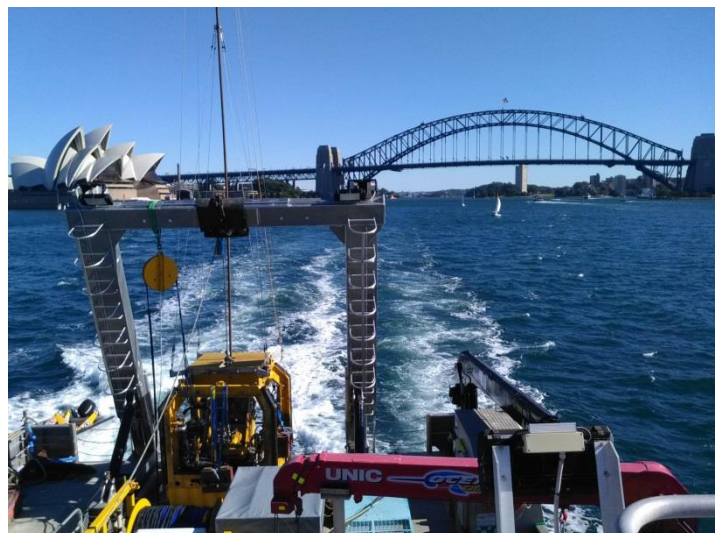
We will be working from **7am to 6pm Monday to Friday** and **8am – 1pm on Saturdays**. There will be no work on Sundays or Public Holidays.

### How will this work affect you?

We will be working from barges on the harbour. Navigation channels will remain open, however we will need to put in places exclusion zones around the barges to ensure peoples safety. The barge will be floated into place and then set up to carry out the investigations.

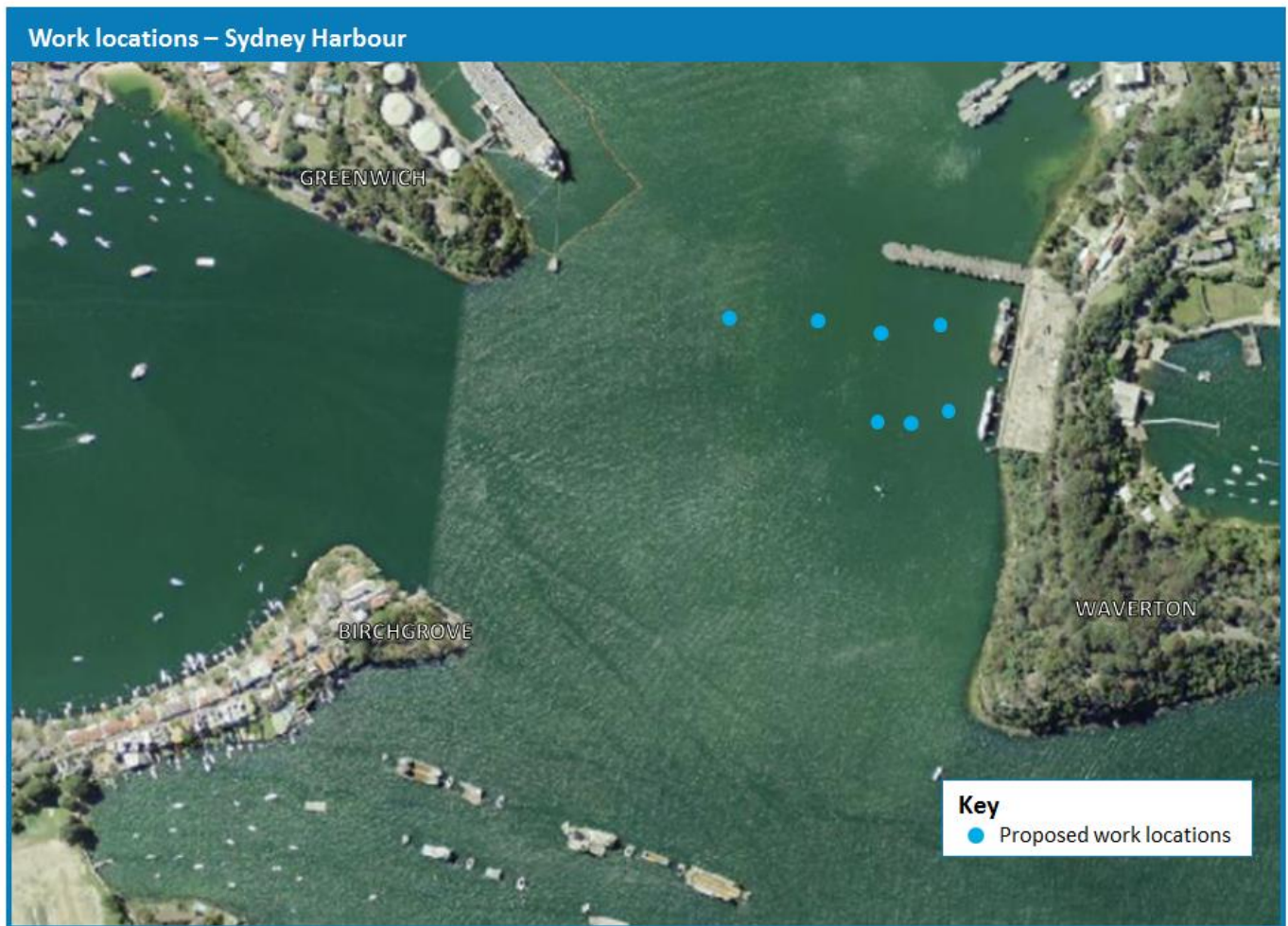
The type of investigation is called cone testing. This testing is not noisy. The testing involves using a special rod which is pushed into the ground and takes readings of the ground conditions.

We expect the barge to be on the harbour for about a month. Once the investigations are finished, the barge will be floated away from the area.



A barge, like this one used in 2017, will be floated in to place and set up to undertake the investigations.

## Location of work



## Thank you

We know our work can be disruptive at times. We thank you for your patience and understanding while we carry out this important work. If at any time you would like to discuss the work, please contact our project team.

---

## Contact the Western Harbour Tunnel and Beaches Link team

### Never miss an update

Please be sure to sign up to our distribution list. By signing up you'll never miss an update about the project. You can call, email or write to us to let us know your details.

 [rms.nsw.gov.au/whtbl](https://rms.nsw.gov.au/whtbl)

 [whtbl@rms.nsw.gov.au](mailto:whtbl@rms.nsw.gov.au)

 1800 931 189

 Roads and Maritime Services  
Locked Bag 928, North Sydney NSW 2059



If you need help understanding this information, please contact the Translating and Interpreting Service on 131 450 and ask them to call us on 1800 931 189.

**Privacy** Roads and Maritime Services ("RMS") is subject to the Privacy and Personal Information Protection Act 1998 ("PPIP Act") which requires that we comply with the Information Privacy Principles set out in the PPIP Act. All information in correspondence is collected for the sole purpose of assisting the assessment of this proposal. The information received, including names and addresses of respondents, may be published in subsequent documents unless a clear indication is given in the correspondence that all or part of that information is not to be published. Otherwise RMS will only disclose your personal information, without your consent, if authorised by the law. Your personal information will be held by RMS. You have the right to access and correct the information if you believe that it is incorrect.