

Western Harbour Tunnel and Beaches Link - geotechnical investigations on Wakehurst Parkway, between Frenchs Forest and Seaforth Oval from Monday, 20 August

Roads and Maritime is carrying out geotechnical testing for the Western Harbour Tunnel and Beaches Link program

Roads and Maritime will carry out geotechnical testing and investigations to gather information about existing road conditions and below surface ground conditions. Our work will be located on Wakehurst Parkway between Warringah Road and Seaforth Oval.

We have included a map to show the location of the work.

Our work schedule

We will be on site for **two night shifts** between **8pm and 5am** between **Monday, 21 August and Wednesday, 23 August**, weather permitting.

How will the work affect you?

Works will generally be for short durations and will be a low noise level when compared to existing background noise. We will make every effort to minimise noise by turning off machinery and vehicles when not in use.

Geotechnical testing involves drilling small diameter holes (about the size of an orange) to extract rock samples used for scientific testing and analysis.

Traffic changes

Some temporary traffic changes may apply to ensure the work zone is safe. Appropriate site controls will be in place including traffic controls if required. If traffic controls are required, please observe all signage and follow instructions of traffic controllers.

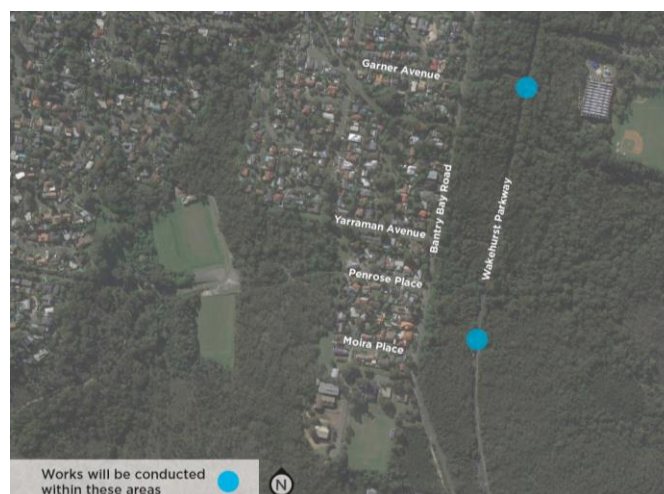
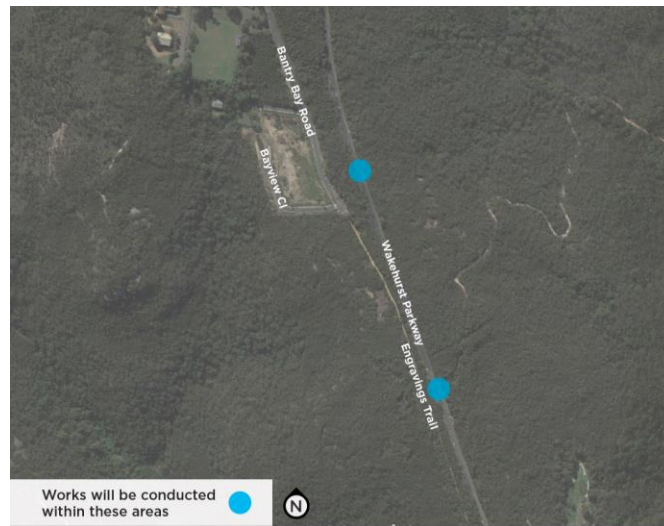
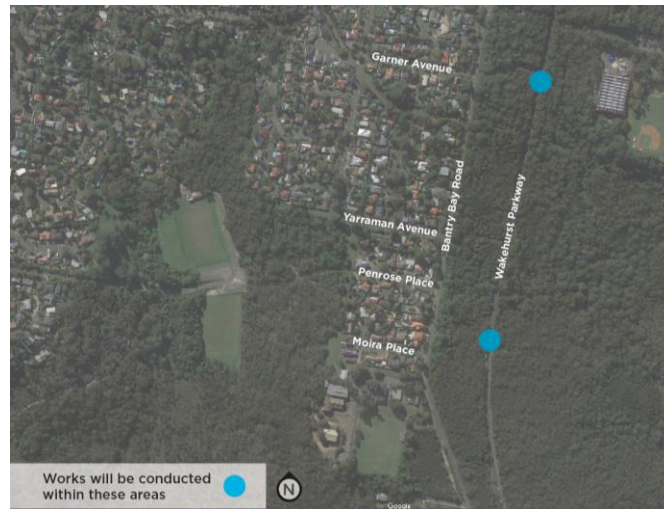
Please keep to speed limits and follow signs and traffic controllers' directions. For the latest traffic updates, you can call 132 701, visit livetraffic.com or download the Live Traffic NSW App.

Contact

If you have any questions please contact us on 1800 931 189 during office hours (8.30am to 5pm Monday to Friday) or whtbl@rms.nsw.gov.au. Thank you for your patience during this important work.

Work area

Work locations at Wakehurst Parkway, between Warringah Road and Seaforth oval



Translating and Interpreting Service

If you need an interpreter, please call the Translating and Interpreting Service (TIS National) on 131 450 and ask them to telephone Roads and Maritime on 1800 931 189.