

August 2017

Western Harbour Tunnel and Beaches Link – revised start date for geotechnical investigations from 8 August 2017

The NSW Government is funding preferred route investigations including geotechnical testing for the Western Harbour Tunnel and Beaches Link.

Roads and Maritime Services carries out geotechnical testing to gather information about underground rock and soil conditions across a broad area. Data from this work will be used to inform the engineering design, final costings and a construction timeline.

A site identified by our geologists for test drilling is at Flat Rock Creek Baseball Playing Fields near Willoughby Leisure Centre, Naremburn. The site will be established within the area shown on the map over the page.

Work at this site will start from Tuesday 8 August 2017 and will take around 10 days to complete, depending on ground conditions (weather permitting).

The work will take place between **7am** and **6pm Monday to Friday** and between **8am** and **1pm on Saturday**. There will be no work at night, on Sundays or on public holidays.

A temporary work site with safety fencing will be established to ensure community safety. When the work is completed, the hole will be filled in and the test site restored to its previous condition.

How will the work affect you?

Appropriate site controls will be in place including traffic controls if required. If traffic controls are required, please observe all signage and follow instructions of traffic controllers.

There may be some noise associated with this work. We will minimise disturbance to the local community and operate in an environmentally sensitive and sustainable manner.

The location of these tests does not indicate a possible alignment and the work is designed to gather data about rock strata and conditions deep below ground.

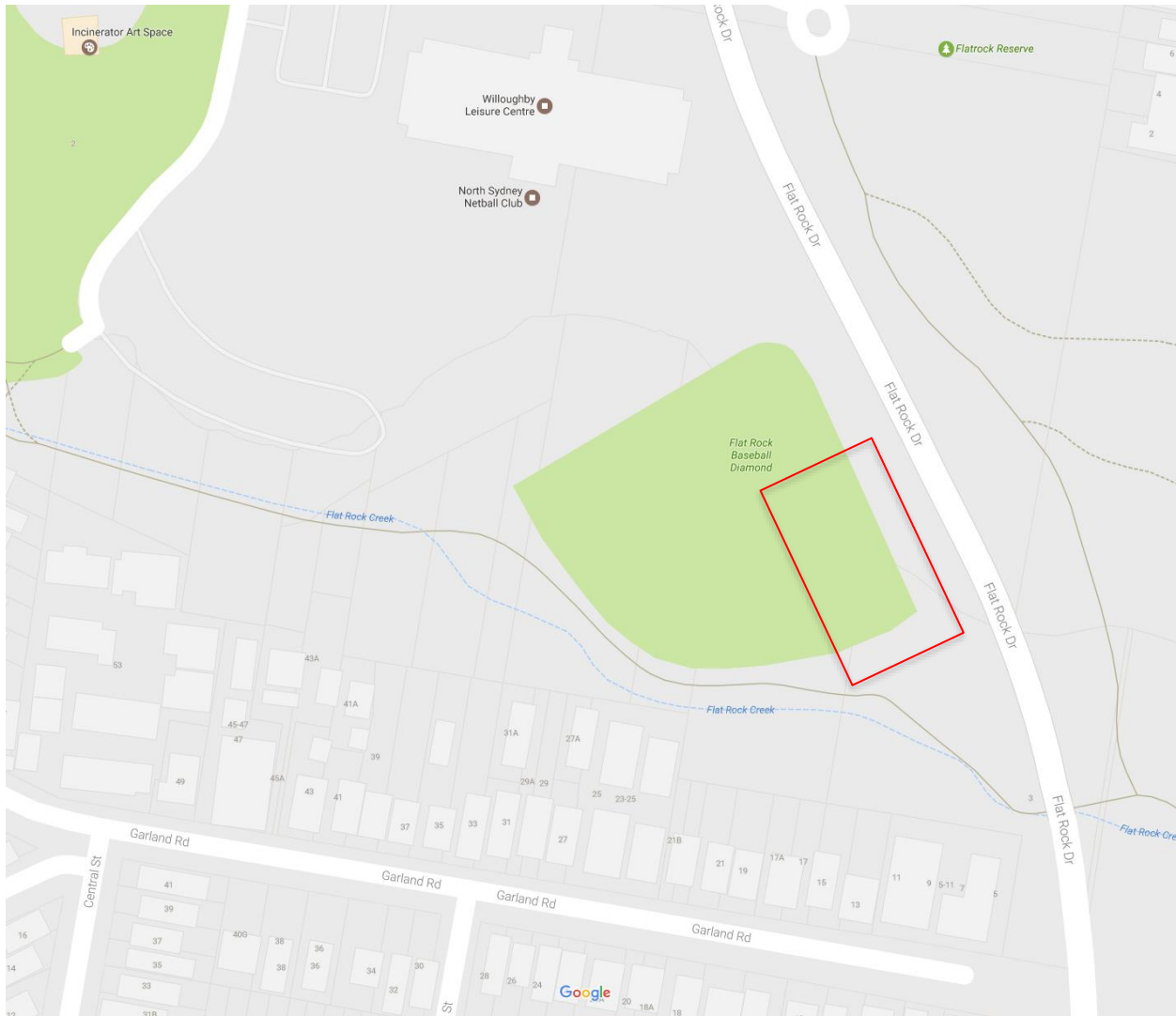
Geotechnical testing involves drilling small diameter holes (about the size of an orange) to extract rock samples used for scientific testing and analysis. Equipment will include a self-propelled drilling rig, support equipment as well as various hand tools.

Contact

If you have any questions please contact our project team on 1800 789 297 during office hours (8.30am to 5pm Monday to Friday) or motorwaydevelopment@rms.nsw.gov.au. Thank you for your patience during this important work.

Work area

Flat Rock Creek Baseball Playing Fields near Willoughby Leisure Centre, Naremburn – geotechnical work site



Translating and Interpreting Service

If you need an interpreter, please call the Translating and Interpreting Service (TIS National) on 131 450 and ask them to telephone Burtons on 1800 631 531.

