



Western Harbour Tunnel and Warringah Freeway Upgrade

Upcoming investigation work for the Warringah Freeway Upgrade

The Western Harbour Tunnel and Beaches Link program is a major transport infrastructure program that will make it easier, faster and safer to get around Sydney. By creating a western bypass of the Sydney CBD, the Western Harbour Tunnel will take pressure off the congested Sydney Harbour Bridge, Sydney Harbour Tunnel and Anzac Bridge; while Beaches Link will create an alternative to the Military Road and Warringah Road corridors to relieve traffic pressure on the North Shore.

A program of this scale is expected to support up to 15,000 full-time equivalent jobs during its construction.

Over the next two months, we will be carrying out investigation work around the Warringah Freeway to collect more information about ground conditions. This information will be used to help inform the ongoing planning for the Western Harbour Tunnel and Warringah Freeway Upgrade project.

When will we be working?

This work will start in July 2020 and take about two months to complete, weather permitting. Most of our work will take place during the day **from 7:00am to 6:00pm Monday to Friday** and **from 8:00am to 1:00pm on Saturdays**.

Whilst most of our work will be during the day, to maintain safety and capacity on the road network when we are working near live traffic we will need to work at night. Working next to and on existing roads, means traffic may need to be slowed or the number of lanes reduced, while work is carried out. By working at night, delays are minimised and journey times for motorists are less affected.

How will the work affect you?

Work will be carried out in various locations around the Warringah Freeway from Naremburn to North Sydney. We have included a map to show you where we will be working. We have programmed our work across two months at different locations to give you respite.

You will see us in the area setting up environmental controls and installing fences around our work site. We will be using drilling rigs to extract soil and water samples from the ground. We will also be installing some equipment for ongoing water monitoring and our teams will come back later in the year to collect the samples. When we are finished we will fill in the holes, clean up the sites and replant grass, as appropriate.

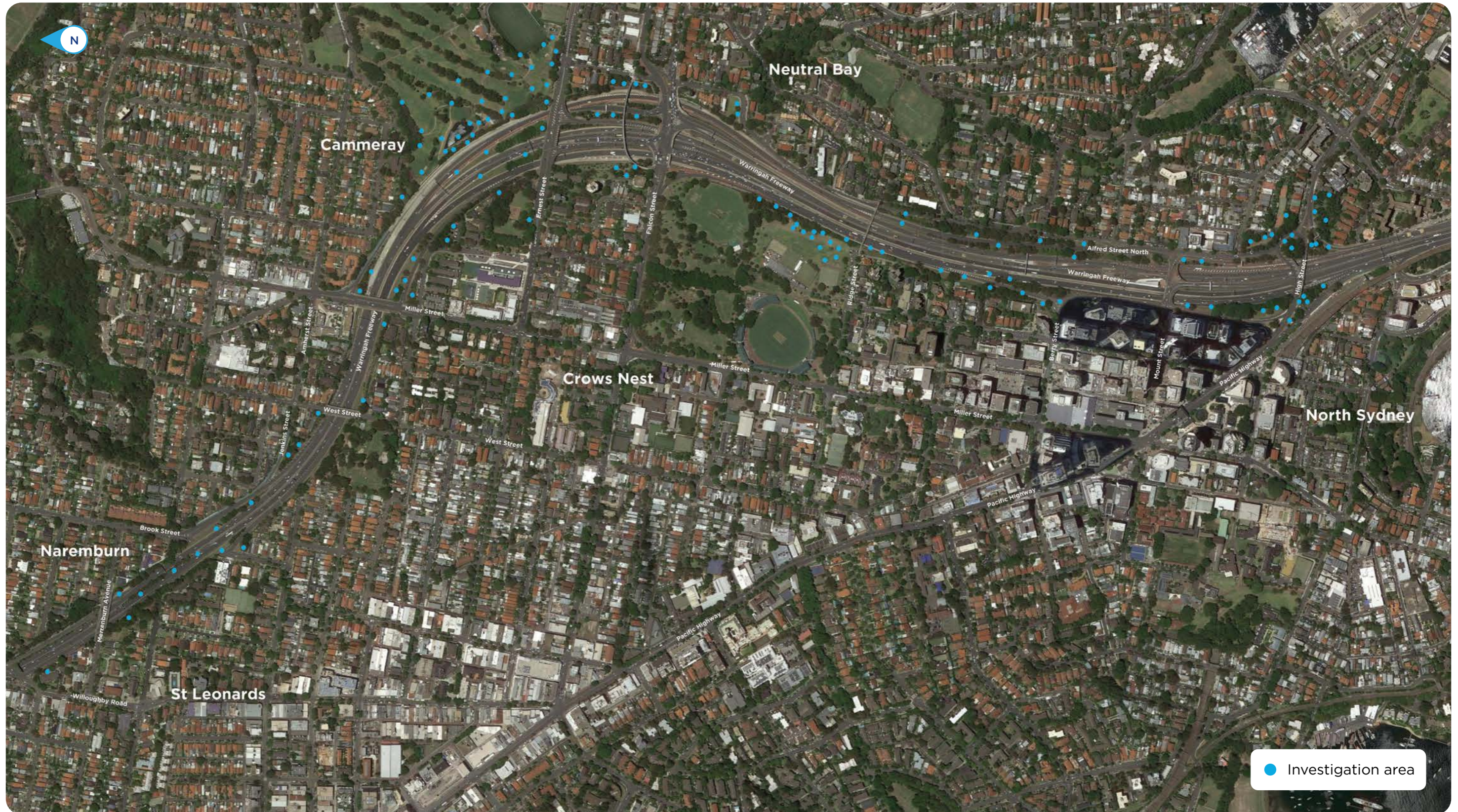
Travel time savings



Supporting NSW amid COVID-19

The health and safety of our workforce and the wider community will be top of mind as we carry out our work. This will include ensuring our workers follow the appropriate hygiene and social distancing guidelines.

Investigation areas



When we are working in parks and public spaces there will be small areas which we will need to fence off during our work. You will still have access to the parks and public spaces while these investigations take place.

Our work may be noisy at times but we will do everything we can to minimise the impact on you. When we are drilling, you may be able to hear sounds like the engine of a truck running and at times sounds like a small jack hammer. We will work closely with you during our work and we encourage you to give us a call if you have any issues or concerns.

Will there be changes to traffic?

While we are working, there will be temporary traffic changes to ensure the work area is safe. This means traffic may need to be slowed or the number of lanes reduced in an area while work is carried out. Please keep to speed limits and follow signs and traffic controllers' directions.

Want to stay in touch?

If you would like to be kept up to date on when the work is happening next to you or at night, please **contact the project team on 1800 931 189 or via whtbl@transport.nsw.gov.au and register for updates.**

We will also be providing a weekly website update so you can **check our website at nswroads.work/whtbl**

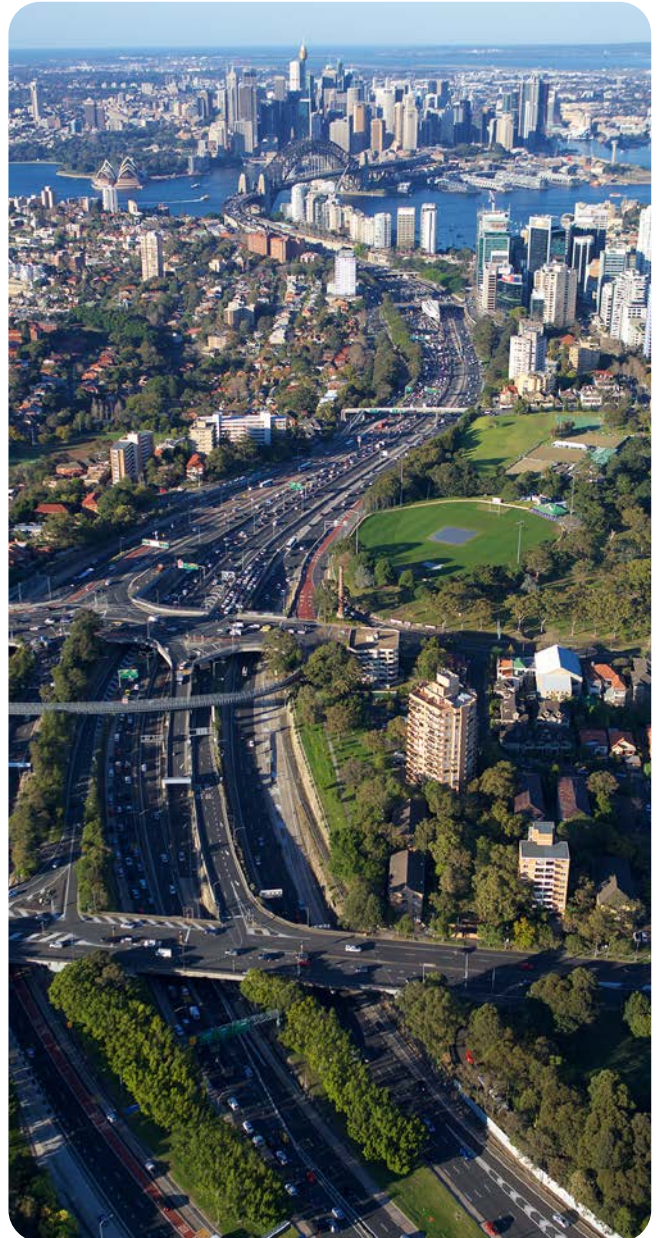
For the latest traffic updates:

Call **132 701**


Visit **www.livetraffic.com**

Download the App

Live Traffic NSW




Contact the Western Harbour Tunnel and Beaches Link team

 nswroads.work/whtbl

 whtbl@transport.nsw.gov.au

 1800 931 189

 Customer feedback
Transport for NSW, Locked Bag 928
North Sydney NSW 2059



Visit our interactive web portal

 nswroads.work/whtportal



131 450

If you need help understanding this information, please contact the Translating and Interpreting Service on 131 450 and ask them to call us on 1800 931 189.

Privacy Transport for NSW ("we") collects the personal information of those who contact us in connection with the Western Harbour Tunnel and Beaches Link ("the Program"). In addition to collecting your name and contact details, we may collect other information, such as your submissions and other communications with us. We will retain and use this information for consultation purposes, including communications and analysis in connection with the Program. We will not disclose your personal information to third parties unless authorised by law and if we include your submissions in any public report we will not identify you. Providing your personal information is voluntary but if you do not provide it we may not include you on our stakeholder database and you might miss further consultation opportunities. Your personal information will be held by us and you can contact us to access or correct it. Please email us at whtbl@transport.nsw.gov.au, write to us at Transport for NSW, Locked Bag 928, North Sydney NSW 2059, or call us on 1800 931 189.