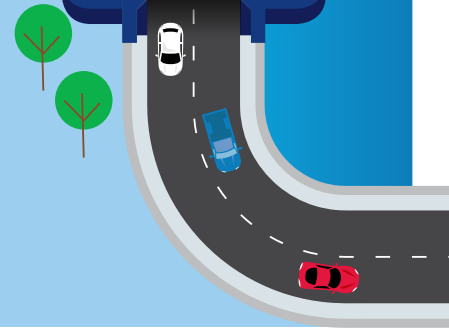




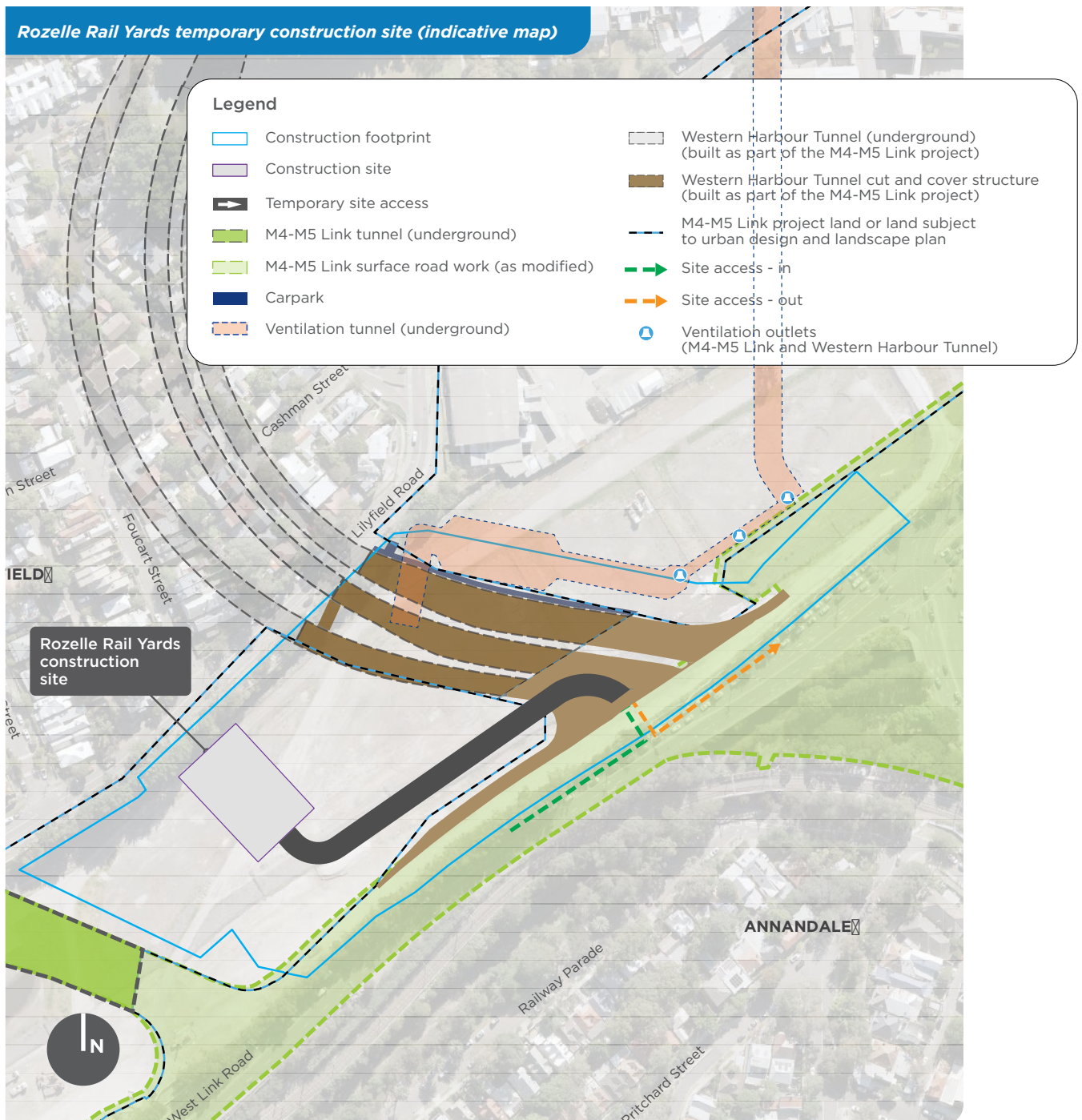
Western Harbour Tunnel and Warringah Freeway Upgrade



Rozelle Rail Yards temporary construction site

Our work at this temporary construction site will support the mechanical and electrical fitout and construction of the motorway facilities for Western Harbour Tunnel. It will also support the fitout of the ventilation outlet and minor integration work to connect the on and off ramps to City West Link.

Rozelle Rail Yards temporary construction site (indicative map)



The majority of the park on the Rozelle Rail Yards will be completed as part of the WestConnex Rozelle Interchange.

However, to build the Western Harbour Tunnel, we require a small, temporary construction site of about 1000 square metres (about the size of two tennis courts) in this area to help build tunnel as quickly and safely as possible.

This will be a support site for work happening underground, and worker parking for the site will be provided for at our White Bay and Glebe Island sites.

The site location in the EIS is indicative only.

We still have work to do to finalise the location and layout of the site which will include consulting with the WestConnex Rozelle Interchange Contractor and the successful Western Harbour Tunnel Contractor to ensure the impact to community is reduced as much as possible. This will allow us to ensure we maintain access along the length of the park while the Western Harbour Tunnel is being built.

It is expected that we will use this site from around 2023 till 2026 and will be rehabilitated on completion.

We are working with the Rozelle Interchange project team on the final location of this compound to minimise the impact.



Interactive portal

 nswroads.work/whtportal


Visit our interactive web portal to read the EIS, find out more or ask our team a question.

Contact the WestConnex Rozelle Interchange project team

If you have any questions about the Rozelle Interchange (as part of the M4-M5 Link project) including the Western Harbour Tunnel component at Rozelle, please contact the project team:

 info@rozelleinterchange.com.au

 1800 660 248

 Mail or drop into the Community Information Centre at:





84 Lilyfield Road, Rozelle NSW 2039

Open 9am - 5pm, Monday to Friday
(excluding public holidays)

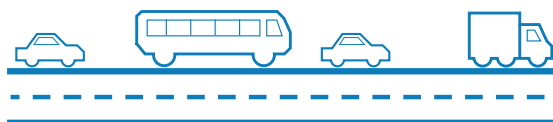


Travel time savings

Western Harbour Tunnel will provide a safer, more reliable trip as you bypass the Sydney CBD to get to your destination faster

-  **Save up to 20 minutes**
Sydney Olympic Park to North Sydney
-  **Save up to 20 minutes**
Leichhardt to North Sydney
-  **Save up to 15 minutes**
North Sydney to Sydney Kingsford Smith Airport
-  **You will also save up to 20 minutes on your city commute when driving from:**

- Chatswood
- Roseville
- Lindfield
- Forestville
- Belrose
- Frenchs Forest
- Cromer
- North Narrabeen



You will see traffic significantly reduce on the:

- Western Distributor **35% less traffic**
- Sydney Harbour Tunnel **20% less traffic**
- Sydney Harbour Bridge **17% less traffic**

How to make a submission

How to make an online submission

1. Visit Department of Planning, Industry and Environment's (DPIE) Major Projects website at planningportal.nsw.gov.au/major-projects
2. Create a user account by clicking the 'Sign In' icon in the top right of the homepage or under the 'Services' tab and then click the 'Have Your Say' link
3. When you are logged in, find the Western Harbour Tunnel and Warringah Freeway Upgrade project, and click the 'Make a Submission' icon.

How to make a hard copy submission

You can submit a hard copy of your submission. If you want DPIE to delete your personal information before publication, please make this clear at the top of your letter.

You need to include:

1. your name and address, at the top of the letter only
2. the name of the application and application number: **SSI_8863**
3. a statement on whether you support or object to the proposal
4. the reasons why you support or object to the proposal
5. a declaration of any reportable political donations made in the previous two years.

You can hand deliver your submission to DPIE's office, located at:

4 Parramatta Square, 12 Darcy Street
Parramatta NSW 2150

You can post your submission to:

Attention: Director, Transport Assessments
Planning & Assessment, Department of Planning
Industry and Environment
Locked Bag 5022
Parramatta NSW 2124

Donations and gift disclosure

Anyone lodging submissions must declare reportable political donations made in the previous two years. To find out what is reportable, and for a disclosure form, go to planning.nsw.gov.au/donationsandgiftdisclosure or phone 1300 305 695 for a copy.

Note: the disclosure requirements apply however a submission is made.

Privacy

Before making your submission, please read DPIE's Privacy Statement at planning.nsw.gov.au/privacy or phone 1300 305 695 for a copy. DPIE will publish your submission on its website in accordance with their Privacy Statement.


Submissions must be received by DPIE before midnight 12 March 2020.

Contact the Western Harbour Tunnel and Beaches Link team

 nswroads.work/whtbl

 whtbl@transport.nsw.gov.au

 1800 931 189

 Customer feedback
Transport for NSW, Locked Bag 928
North Sydney NSW 2059

Visit our interactive web portal

Read the EIS, find out more or ask our team a question.

 nswroads.work/whtportal



If you need help understanding this information, please contact the Translating and Interpreting Service on 131 450 and ask them to call us on 1800 931 189.

Privacy Transport for NSW is collecting your personal information in connection with the Western Harbour Tunnel and Warringah Freeway Upgrade ("the Project"). In addition to collecting your name and contact details we may collect other information such as your submissions and other communications with us. We will retain and use this information for consultation purposes, including communications and analysis in connection with the Project. We will not disclose your personal information to third parties unless authorised by law and if we include your submissions in any public report we will not identify you. Providing your personal information is voluntary but if you do not provide it we may not include you on our stakeholder database and you might miss further consultation opportunities. Your personal information will be held by us and you can contact us to access or correct it. Please write to us at either whtbl@transport.nsw.gov.au or Transport for NSW, Locked Bag 928, North Sydney NSW 2059.