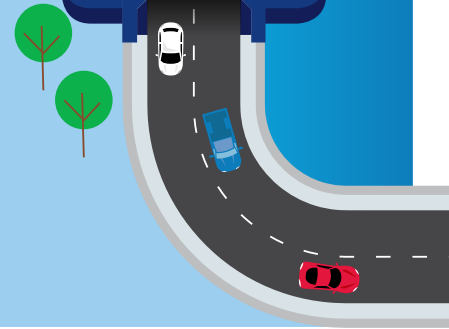


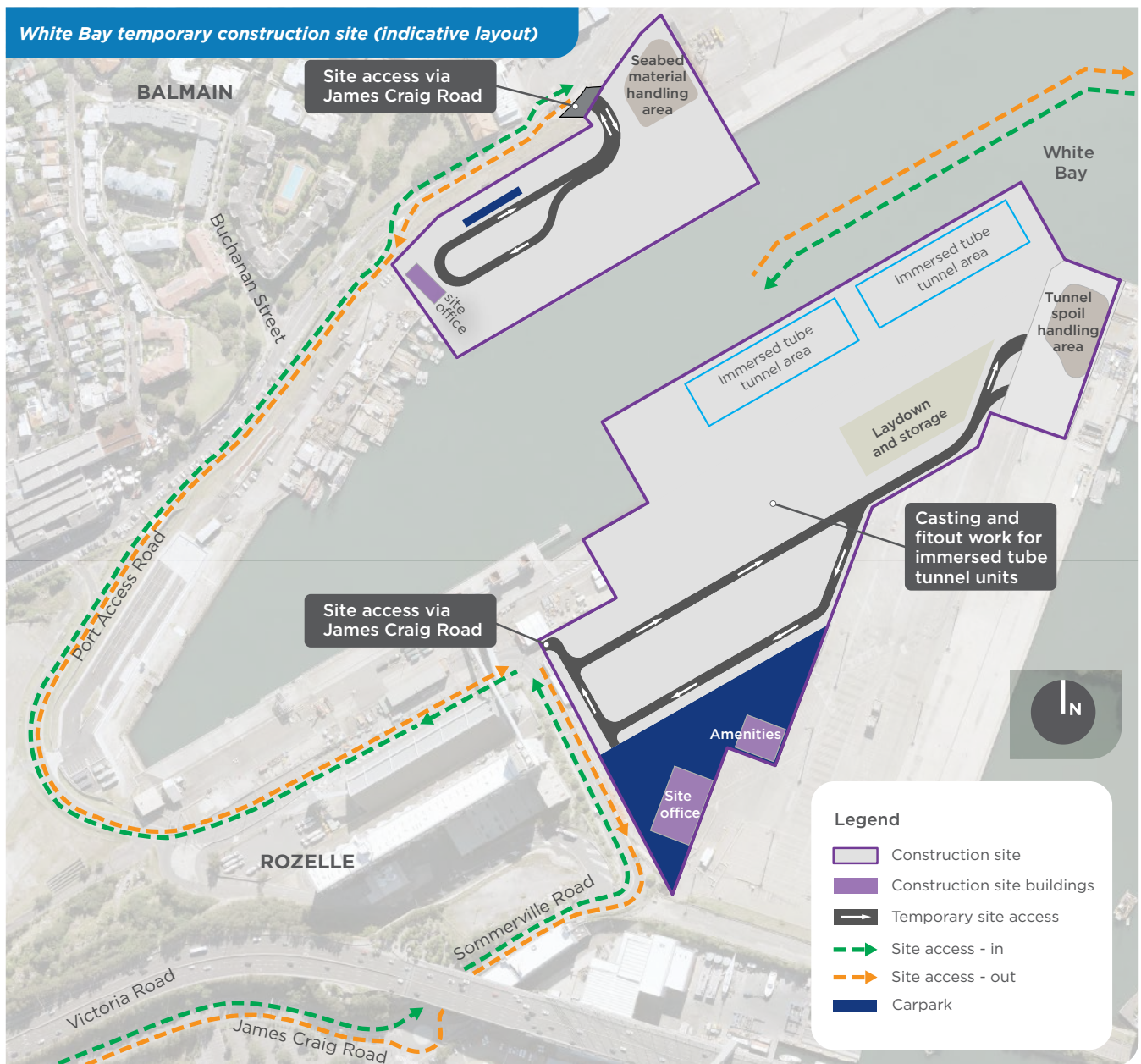


# Western Harbour Tunnel and Warringah Freeway Upgrade



## White Bay temporary construction site

We will be using a temporary construction site at White Bay to support our work in the harbour. The site will be built on land and we will use the existing wharf areas to house our marine vessels.



Building under the harbour and using government owned land minimises the impact to private properties. We will be using water-based transport where possible to reduce construction traffic on local roads.

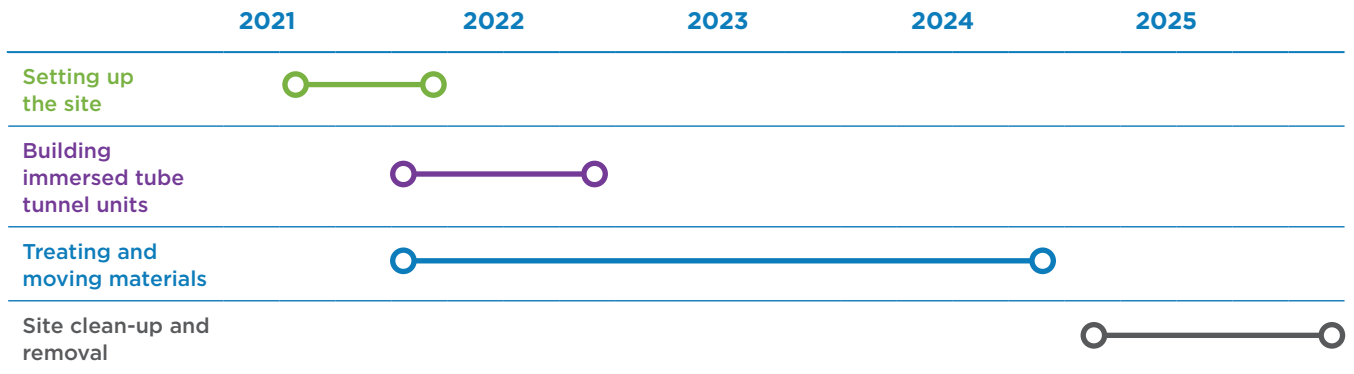
Our peak time for marine traffic will be when we build the interface structures of the immersed tube tunnel within the cofferdams.

**Our key activities include:**

- setting up the site, including removing some structures and building a new temporary wharf, moorings, a casting and fitout facility and setting up a treatment area for seabed materials
- construction and fitout of the immersed tube tunnel units

- transporting the immersed tube tunnel units to Snails Bay (near Birchgrove) for temporary storage before they are placed in position
- treating and transferring materials removed from the seabed during seabed profiling which are not suitable for offshore disposal
- handling and transferring tunnel spoil on barges from the Yurulbin Point and Berrys Bay sites direct to trucks for haulage on to arterial roads
- storage and transport of equipment, plant and personnel for Yurulbin Point and Berrys Bay construction sites and the two cofferdams
- providing support facilities for the Rozelle Rail Yards construction site like worker parking and storage areas.

**Indicative construction timeframe and work activities for White Bay**



*Indicative timing only*



**Travel time savings**

- up to 20 minutes** from Sydney Park to North Sydney
- up to 20 minutes** from Leichhardt to North Sydney
- up to 15 minutes** from North Sydney to Sydney Kingsford Smith Airport

---

**Duration**

You may see us in this area over a period of around four and a half years as we setup, carry out our construction work, then demobilise the site and prepare it for its future use.

The construction peak at this site will be when we are treating and moving materials for tunnelling work.

---

**Hours of work**

Our general site activities and spoil haulage will be carried out during standard construction hours.

There may be occasional deliveries and some light vehicle movements outside of standard construction hours to support shift changes on the other water based sites.

---

**Traffic /  
vehicle movements**

Access in and out of the site will be via James Craig Road. James Craig Road provides access to the harbour and generally has low volumes of traffic.

At our construction peak, there will be around 700 heavy vehicle movements and 530 light vehicle movements per day (a vehicle travelling in and out of the site is counted as two movements).

---

**Maritime movements**

You will notice some increase in harbour maritime traffic when we are building the immersed tube tunnels for the harbour crossing. We will manage our work to minimise interruptions to port operations and the navigation of ships and ferries within Sydney Harbour.

If you spend time on the water you may notice us moving barges, temporarily restricting maritime speeds around construction areas and our sites, temporarily relocating swing moorings and setting up cofferdams and construction sites.

We will work closely with the community as we operate our vessels. To reduce our impact we will operate our vessels to minimise wash to areas of shoreline and not impact, schedule our activities to limit impacts on recreational marine traffic and temporarily relocate impacted moorings while we work.

---

**Vessel movements on  
the water**

- Twenty-two small boats movements (about the size of a water taxi) to ferry our workers to the other water based construction sites (Yurulbin Point, Sydney Harbour Cofferdams and Berrys Bay) during the day and night to meet shift changes
- fourteen barge movements for transportation of spoil to White Bay during standard construction hours
- thirty-four barge movements for deliveries, which could take place outside of standard construction hours.

One boat or barge travelling into and out of site is counted as two movements.

---



## Interactive portal

 [nswroads.work/whtportal](https://nswroads.work/whtportal)

Visit our interactive web portal to read the EIS, find out more or ask our team a question.

# How to make a submission

## How to make an online submission

1. Visit Department of Planning, Industry and Environment's (DPIE) Major Projects website at [planningportal.nsw.gov.au/major-projects](http://planningportal.nsw.gov.au/major-projects)
2. Create a user account by clicking the 'Sign In' icon in the top right of the homepage or under the 'Services' tab and then click the 'Have Your Say' link
3. When you are logged in, find the Western Harbour Tunnel and Warringah Freeway Upgrade project, and click the 'Make a Submission' icon.

## How to make a hard copy submission

You can submit a hard copy of your submission. If you want DPIE to delete your personal information before publication, please make this clear at the top of your letter.

### You need to include:

1. your name and address, at the top of the letter only
2. the name of the application and application number: **SSI\_8863**
3. a statement on whether you support or object to the proposal
4. the reasons why you support or object to the proposal
5. a declaration of any reportable political donations made in the previous two years.

### You can hand deliver your submission to DPIE's office, located at:

4 Parramatta Square, 12 Darcy Street  
Parramatta NSW 2150

### You can post your submission to:

*Attention: Director, Transport Assessments*  
Planning & Assessment, Department of Planning  
Industry and Environment  
Locked Bag 5022  
Parramatta NSW 2124

## Donations and gift disclosure

Anyone lodging submissions must declare reportable political donations made in the previous two years. To find out what is reportable, and for a disclosure form, go to [planning.nsw.gov.au/donationsandgiftdisclosure](http://planning.nsw.gov.au/donationsandgiftdisclosure) or phone 1300 305 695 for a copy.


*Note: the disclosure requirements apply however a submission is made.*

## Privacy

Before making your submission, please read DPIE's Privacy Statement at [planning.nsw.gov.au/privacy](http://planning.nsw.gov.au/privacy) or phone 1300 305 695 for a copy. DPIE will publish your submission on its website in accordance with their Privacy Statement.


**Submissions must be received by DPIE before midnight 12 March 2020.**

## Contact the Western Harbour Tunnel and Beaches Link team

 [nswroads.work/whtbl](http://nswroads.work/whtbl)

 [whtbl@transport.nsw.gov.au](mailto:whtbl@transport.nsw.gov.au)

 1800 931 189

 Customer feedback  
Transport for NSW, Locked Bag 928  
North Sydney NSW 2059

### Visit our interactive web portal

Read the EIS, find out more or ask our team a question.

 [nswroads.work/whtportal](http://nswroads.work/whtportal)



If you need help understanding this information, please contact the Translating and Interpreting Service on 131 450 and ask them to call us on 1800 931 189.

**Privacy** Transport for NSW is collecting your personal information in connection with the Western Harbour Tunnel and Warringah Freeway Upgrade ("the Project"). In addition to collecting your name and contact details we may collect other information such as your submissions and other communications with us. We will retain and use this information for consultation purposes, including communications and analysis in connection with the Project. We will not disclose your personal information to third parties unless authorised by law and if we include your submissions in any public report we will not identify you. Providing your personal information is voluntary but if you do not provide it we may not include you on our stakeholder database and you might miss further consultation opportunities. Your personal information will be held by us and you can contact us to access or correct it. Please write to us at either [whtbl@transport.nsw.gov.au](mailto:whtbl@transport.nsw.gov.au) or Transport for NSW, Locked Bag 928, North Sydney NSW 2059.