



Figure 4: Historic Plan Overlay - Thompson 1827

0 25 50 75 100 125

Metres
Scale: 1:2,500 @ A3
Coordinate System: GDA 1994 MGA Zone 56



Biosis Research Pty. Ltd.
18-20 Mandible Street
Alexandria
NEW SOUTH WALES
2015
Offices also in: Ballarat, Melbourne,
Wollongong, Canberra, Wangaratta



Acknowledgements: Aerial - (c) SKM 2011

Date: 05 April 2012, File number: 14020
Checked by: PBK, Drawn by: JMS
Location: P:\14000s\14020\Mapping\14020_F4_Windsor_1827.mxd



Figure 5: Historic Plan Overlay - Abbott 1831

0 25 50 75 100 125

Metres
Scale: 1:2,500 @ A3
Coordinate System: GDA 1994 MGA Zone 56



Biosis Research Pty. Ltd.
18-20 Mandible Street
Alexandria
NEW SOUTH WALES
2015
Offices also in: Ballarat, Melbourne,
Wollongong, Canberra, Wangaratta



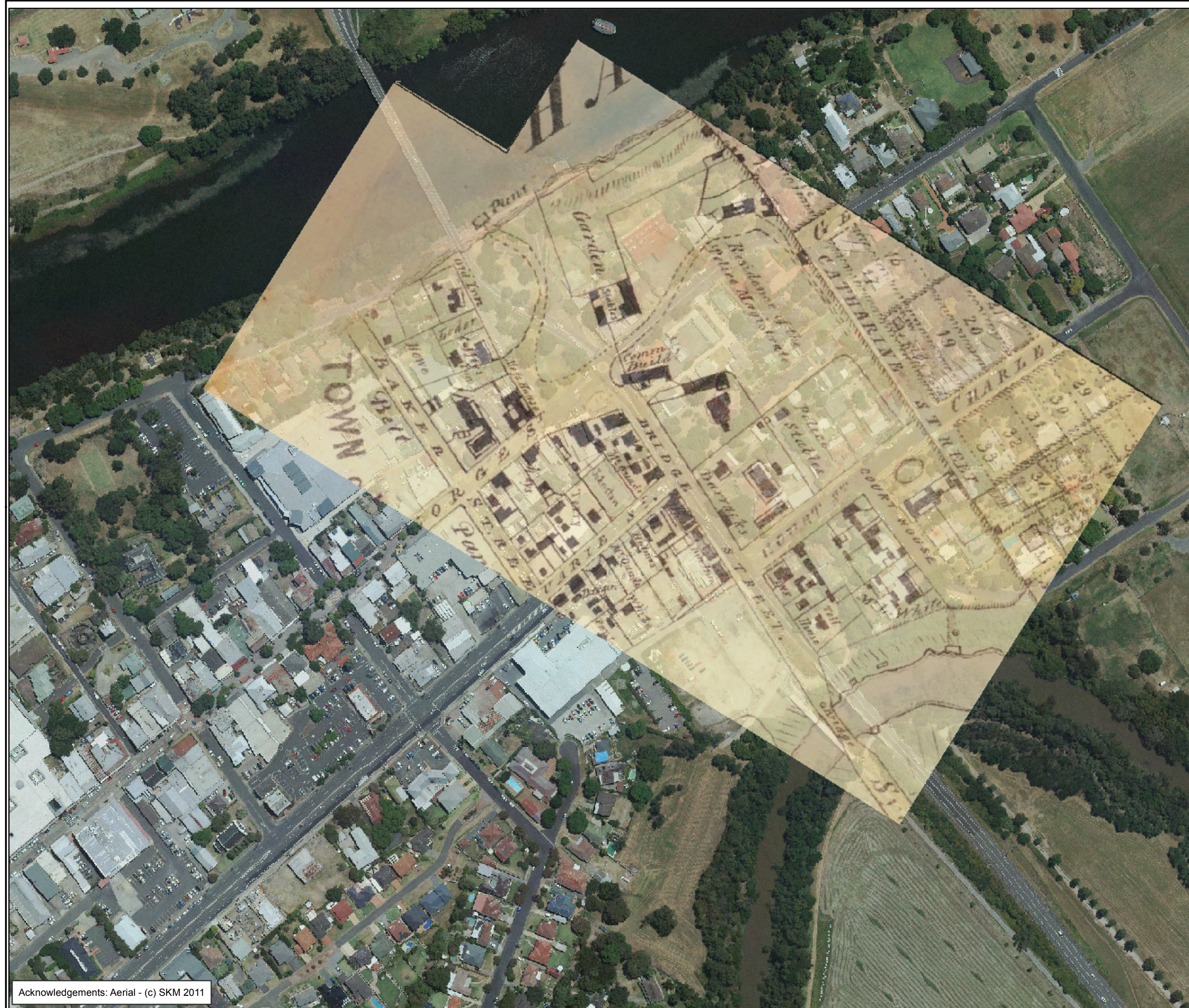


Plate 9: *Detail of Armstrong's plan of the town in 1842 showing the stables on the eastern side of the Square and the inns and private properties on the western side. Source: Jack 2010*

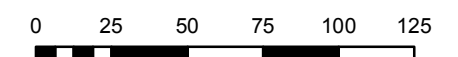
Refer Figure 6 overlay of 1842 plan on current aerial photograph

Part of the land associated with these buildings was put up for sale in 1848 at which time the stables were described as ruinous. Several allotments were sold but some sales were cancelled by the Colonial Secretary¹⁹.

¹⁹ Plan of the Town of Windsor Showing the Mounted Police Paddock and the allotments for sale 1848 LPI 22.873



**Figure 6: Historic Plan
Overlay - Armstrong 1842**



Metres

Scale: 1:2,500 @ A3

Scale: 1:2,500 @ A3
Coordinate System: GDA 1994 MGA Zone 56



Biosis Research Pty. Ltd.
18-20 Mandible Street
Alexandria
NEW SOUTH WALES
2015

Offices also in: Ballarat, Melbourne,
Wollongong, Canberra, Wangaratta

Date: 05 April 2012, File number: 14020
Checked by: PBK, Drawn by: JMS
Location: P:\14000s\14020Mapping\14020_F6_Armstrong_1842.mxd