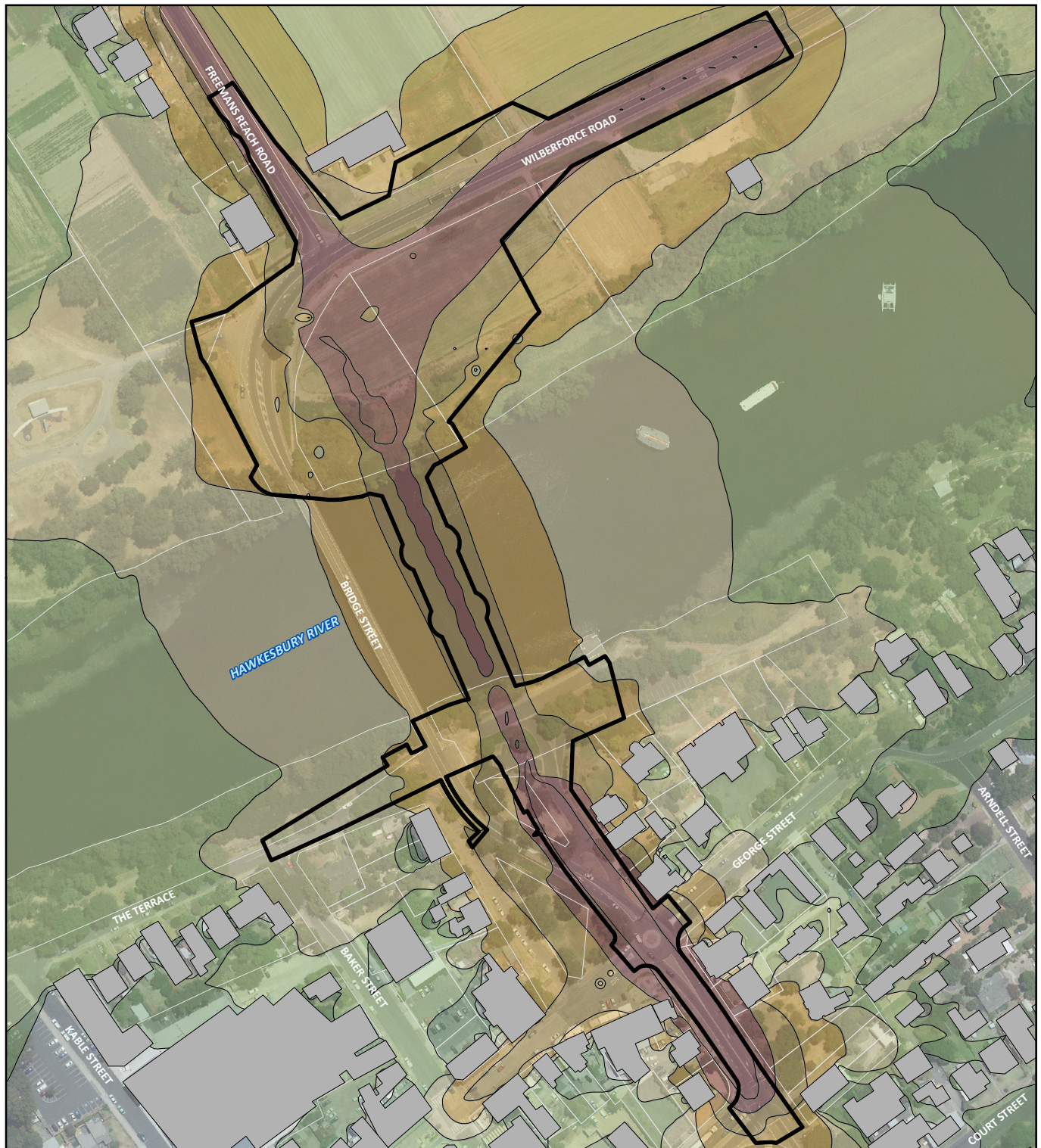


## **Appendix C Noise contours plots**



## Appendix C.1 | Build - 2026 - day



Indicative only – subject to detailed design

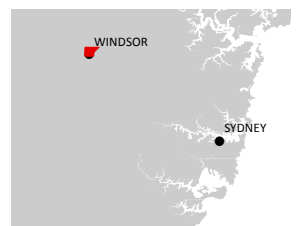
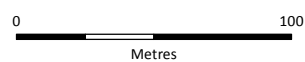
### LEGEND

Concept design footprint	Noise assessment (dB)
Building footprint	45
Cadastral boundary	50
	55
	60
	65
	> 65

Sinclair Knight Merz does not warrant that this document is definitive nor free of error and does not accept liability for any loss caused or arising from reliance upon information provided herein.

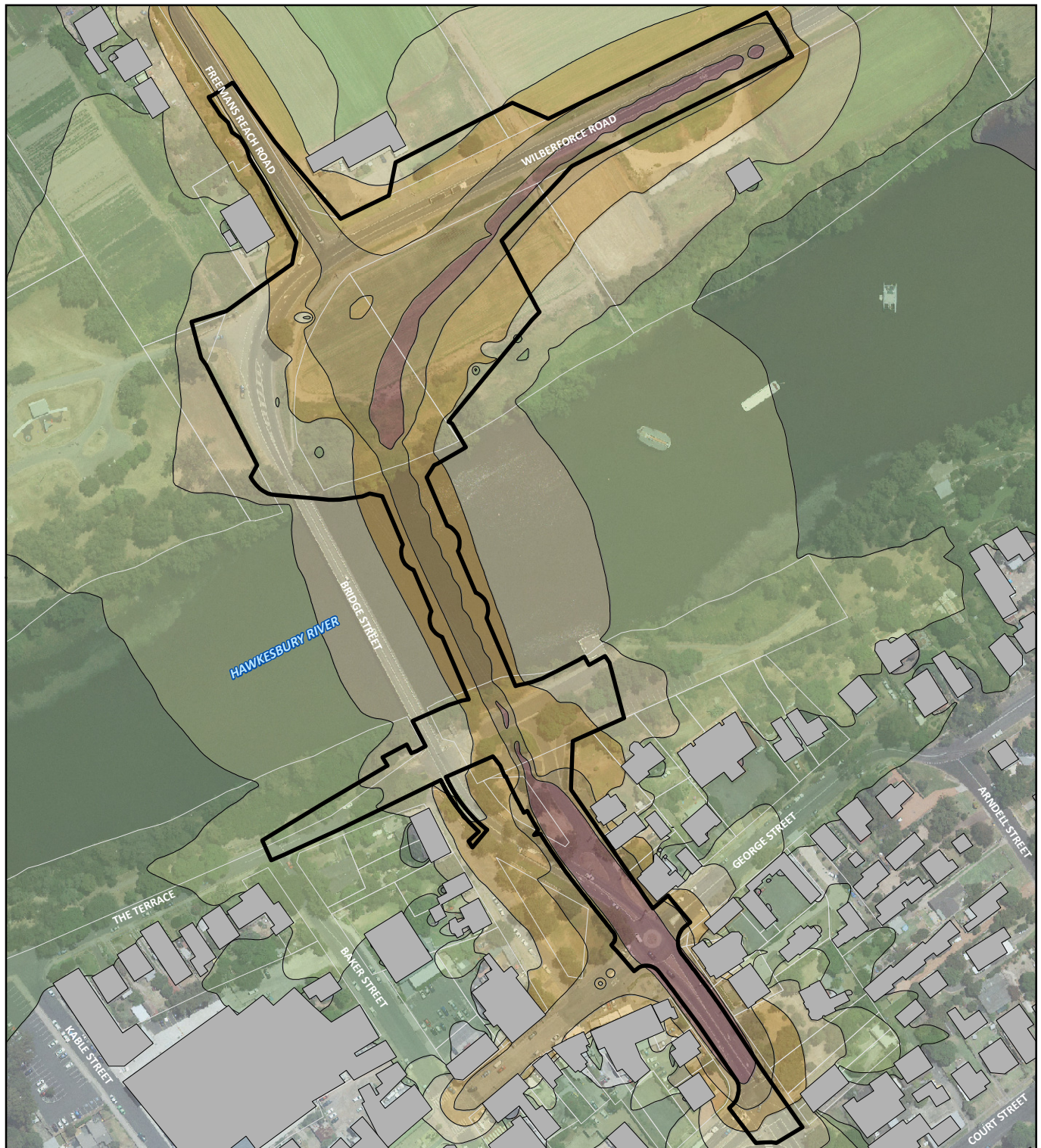


GDA 1994 | MGA Zone 56  
A4 1:2,750





## Appendix C.2 | Build - 2026 - night



Indicative only – subject to detailed design

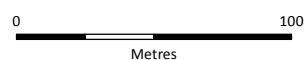
### LEGEND

Concept design footprint	Noise assessment (dB)
Building footprint	45
Cadastral boundary	50
	55
	60
	65
	> 65

Sinclair Knight Merz does not warrant that this document is definitive nor free of error and does not accept liability for any loss caused or arising from reliance upon information provided herein.



GDA 1994 | MGA Zone 56  
A4 1:2,750





Appendix C.3 | Build - 2026 - day - Thompson Square



Indicative only – subject to detailed design

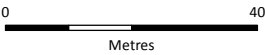
LEGEND

Concept design footprint	Noise assessment (dB)	55 - 56	67 - 68
Building footprint	45 - 46	57 - 58	69 - 70
Cadastral boundary	47 - 48	59 - 60	71 - 72
	49 - 50	61 - 62	73 - 74
	51 - 52	63 - 64	
	53 - 54	65 - 66	

Sinclair Knight Merz does not warrant that this document is definitive nor free of error and does not accept liability for any loss caused or arising from reliance upon information provided herein.

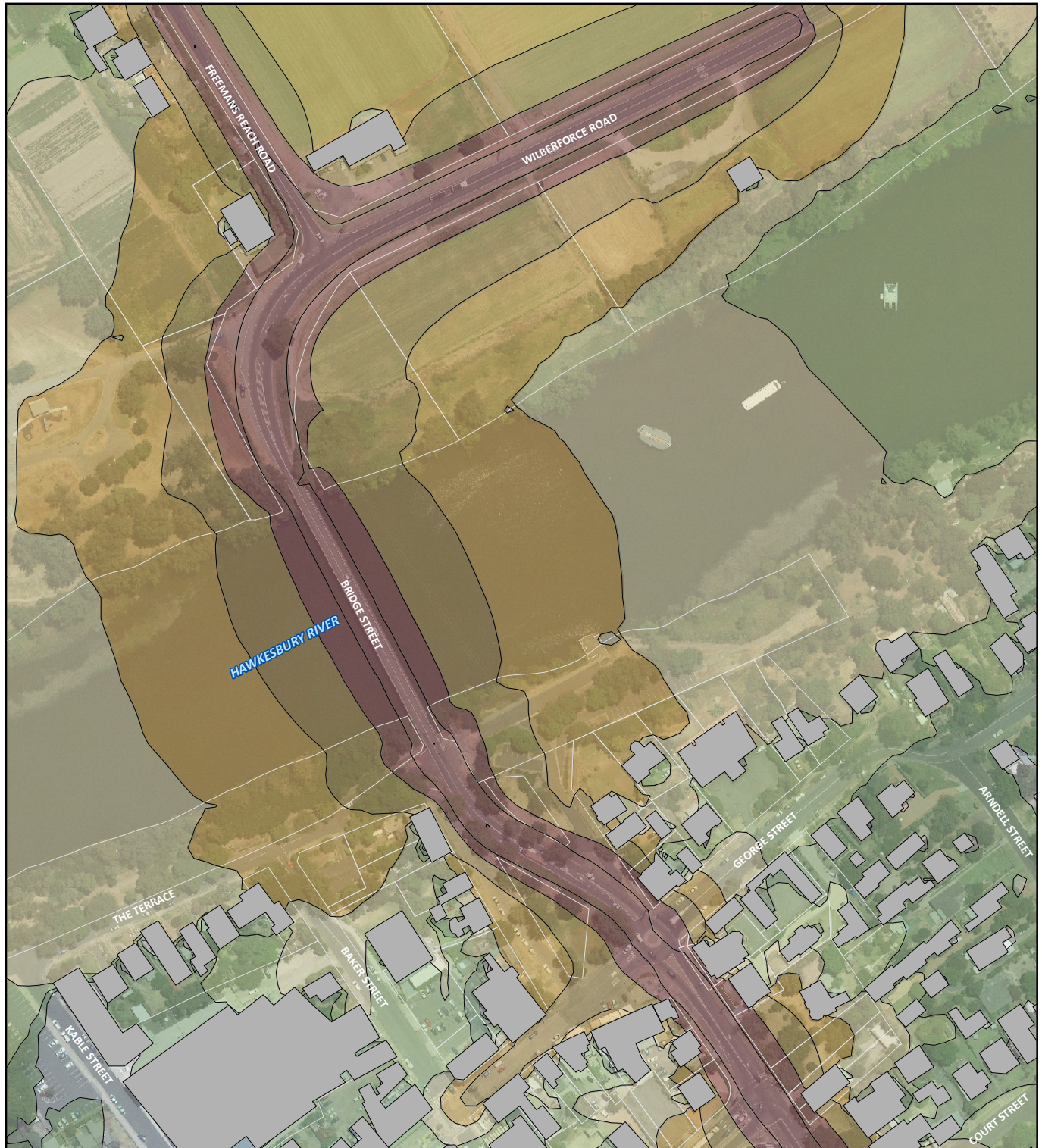


GDA 1994 | MGA Zone 56  
A4 1:1,200





## Appendix C.4 | No build - 2026 - day



Indicative only – subject to detailed design

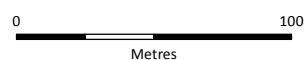
### LEGEND

Building footprint	Noise assessment (dB)
Cadastral boundary	45
	50
	55
	60
	65
	> 65

Sinclair Knight Merz does not warrant that this document is definitive nor free of error and does not accept liability for any loss caused or arising from reliance upon information provided herein.

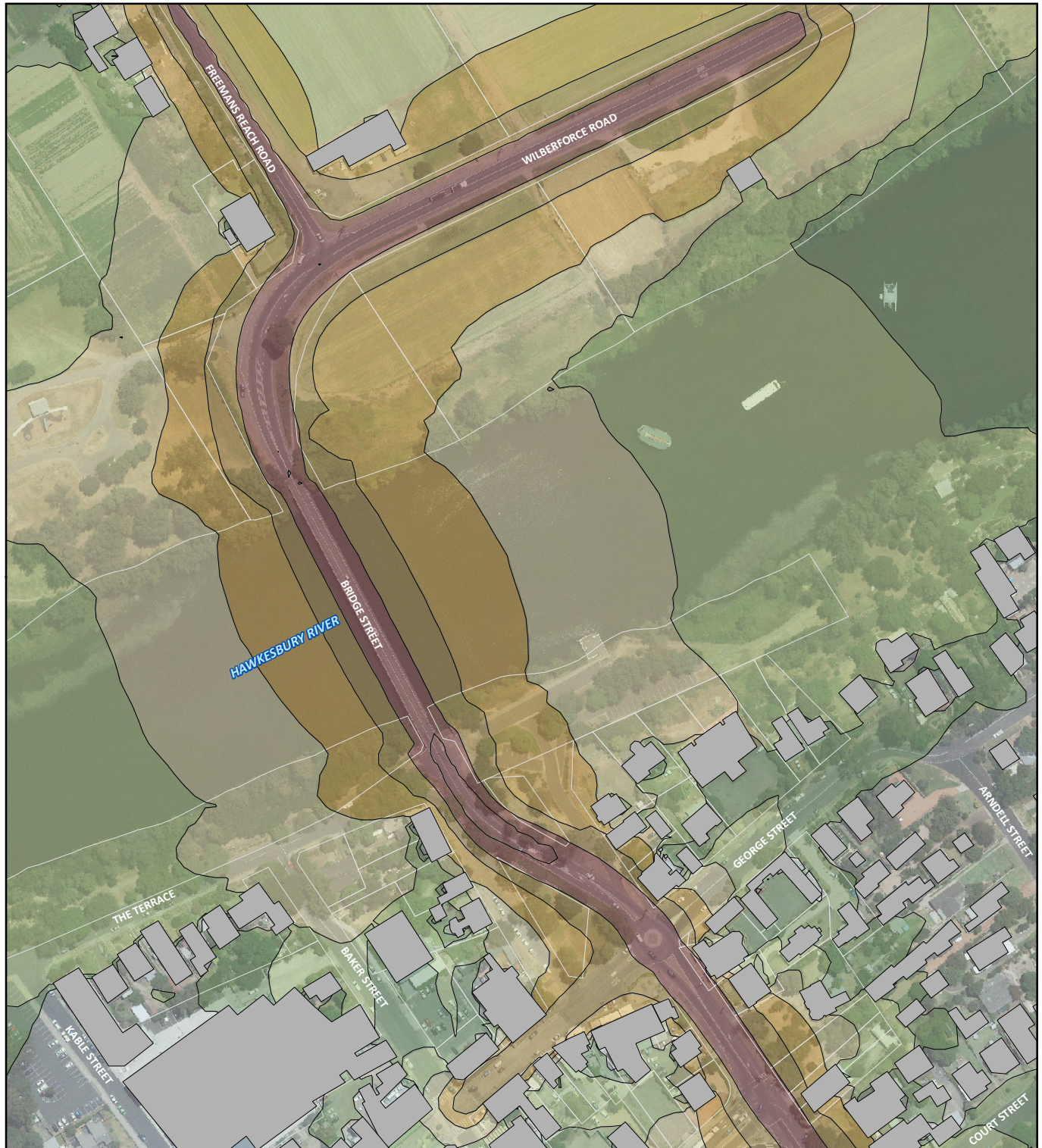


GDA 1994 | MGA Zone 56  
A4 1:2,750





## Appendix C.5 | No build - 2026 - night



Indicative only – subject to detailed design

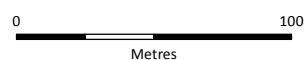
### LEGEND

Building footprint	Noise assessment (dB)
Cadastral boundary	45
	50
	55
	60
	65
	> 65

Sinclair Knight Merz does not warrant that this document is definitive nor free of error and does not accept liability for any loss caused or arising from reliance upon information provided herein.

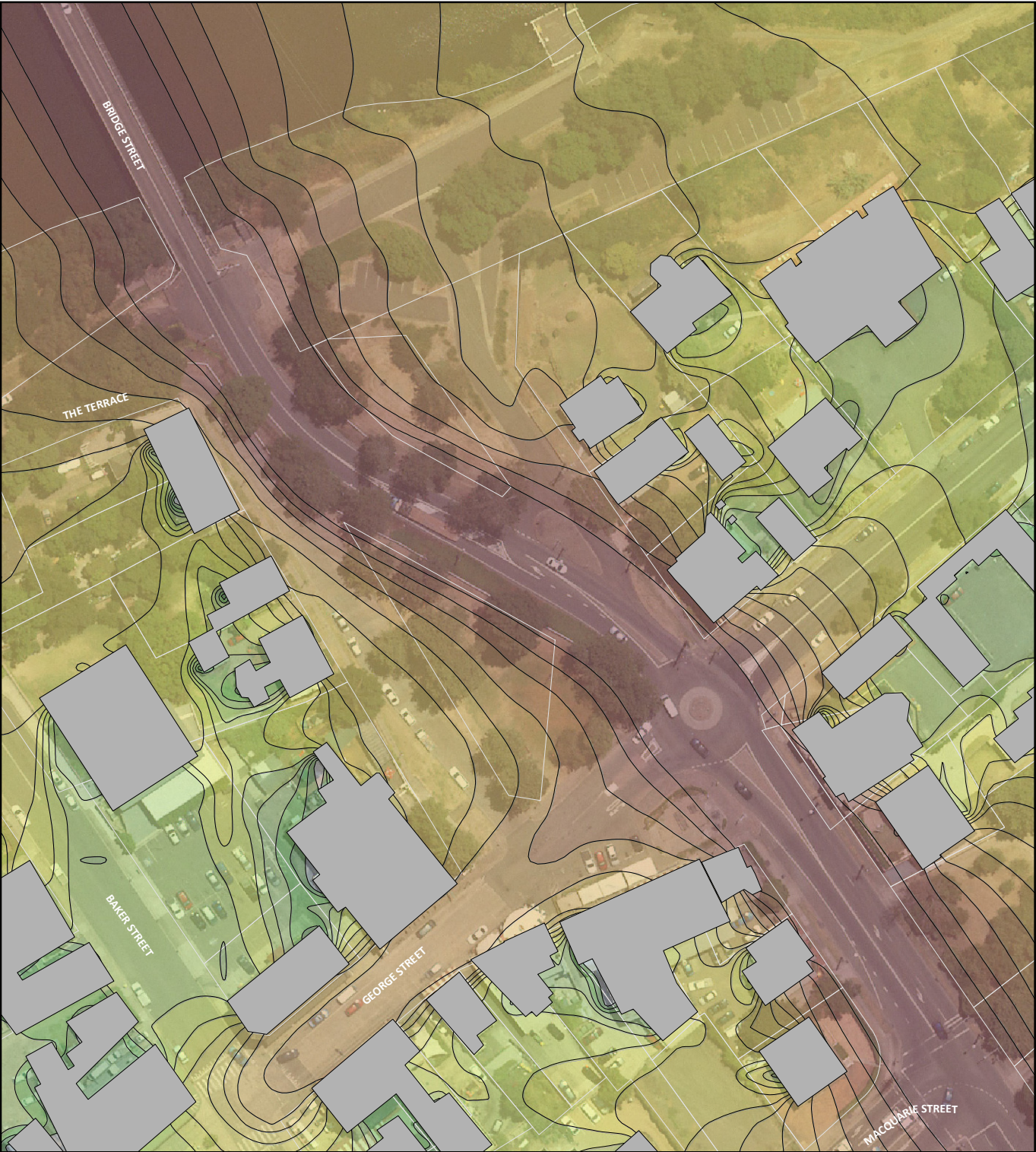


GDA 1994 | MGA Zone 56  
A4 1:2,750





Appendix C.6 | No build - 2026 - day - Thompson Square



Indicative only – subject to detailed design

LEGEND

Building footprint	Noise assessment (dB)	55 - 56	67 - 68
Cadastral boundary		57 - 58	69 - 70
		59 - 60	71 - 72
		61 - 62	73 - 74
		63 - 64	
		65 - 66	

Sinclair Knight Merz does not warrant that this document is definitive nor free of error and does not accept liability for any loss caused or arising from reliance upon information provided herein.



GDA 1994 | MGA Zone 56  
A4 1:1,200

