

Windsor Bridge replacement project

December 2016

The NSW Government is building this important project to provide a safe and reliable crossing over the Hawkesbury River at Windsor. The existing Windsor Bridge is over 140 years old, is deteriorating, no longer meets current engineering and road safety standards and needs to be replaced.

Three lanes to operate from opening

To realise greater traffic improvements from the new Windsor Bridge, Roads and Maritime Services will be implementing the three lane configuration of the bridge from opening. This change was originally scheduled to occur in 2026.

The new bridge, with two lanes southbound and one northbound, will increase traffic capacity and complement upgraded intersections on both sides of the Hawkesbury River.

The new bridge and upgraded intersections will:

- improve traffic performance through Windsor
- increase road network capacity
- improve road safety
- reduce crash rates through improved road alignment.

See the new bridge in 3D

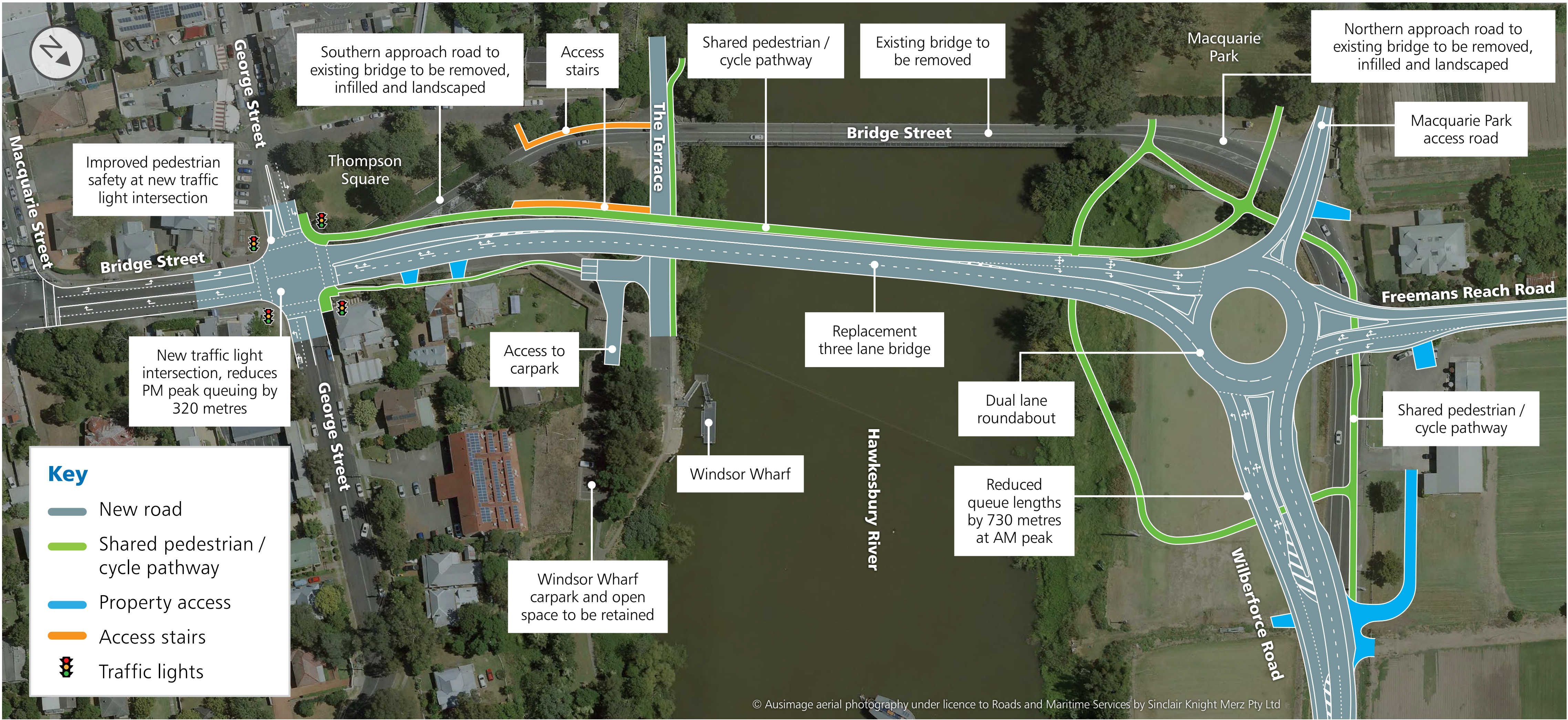
To see a 3D fly through of the three lane design and information about the benefits of the new bridge for all road users, visit

rms.nsw.gov.au/windsorbridge

Artist's impression of the new bridge looking north



Windsor Bridge replacement project – three lane configuration



Benefits for all road users

Around 19 000 vehicles cross Windsor Bridge every day. By 2026, traffic modelling shows this will increase to 26 000 vehicles per day.

Traffic modelling for the project considered network performance in 2016 and 2026. The modelling showed the new two lane bridge would operate satisfactorily for several years.

However, by 2026 traffic volumes at the intersections would exceed capacity, with a significant impact on travel times, queue lengths and average speeds, which would require the implementation of the third lane. Roads and Maritime will implement the extra third lane when the new bridge opens, to increase traffic benefits to road users immediately.

Replacing Windsor Bridge and improving nearby intersections will:

- Improve traffic performance including two-way heavy vehicle traffic flow on the bridge. Traffic modelling suggests speeds in 2026 could be improved from 38km/h to 52km/h in the AM peak period and from 7km/h to 41km/h in the PM peak period
- Improve traffic efficiency by installing traffic lights at the intersection of Bridge and George Streets and a new dual-lane roundabout at Freemans Reach Road and Wilberforce Road
- Reduce northbound queue lengths on Bridge Street by up to 320 metres in the PM peak, and improve travel times through both intersections, based on 2026 traffic volumes
- Reduce southbound queue lengths, based on 2026 traffic volumes, by up to 730 metres in the AM peak
- Provide flood immunity similar to surrounding roads, to improve flood evacuation opportunities for floodplain areas north of Windsor and provide access across the Hawkesbury River for a wider range of flood events.

Why is Windsor Bridge being replaced?

Roads and Maritime is delivering this project to:

- Improve safety for motorists, pedestrians and cyclists from a new and reliable bridge
- Improve traffic flow and efficiency by installing an extra lane on the bridge, traffic lights at the intersection of Bridge Street and George Street and a new dual-lane roundabout at Freemans Reach Road and Wilberforce Road
- Reduce the road footprint within the Thompson Square heritage precinct
- Unify the open space in Thompson Square and increase the usable area in the square by more than 500 square metres with direct access to the river
- Increase flood immunity from a new bridge that can cope with higher levels of flooding and will have the same flood immunity as surrounding approach roads on the northern riverbank
- Give better access for pedestrians and cyclists from a three metre wide shared pedestrian and cycle path that provides safe, efficient connections to Thompson Square and surrounds.



Artist's impression of the new bridge looking south from river level

Background

Roads and Maritime Services is planning to replace the existing Windsor Bridge with a new bridge 35 metres downstream. New approach roads and intersections will be built and existing approach roads will be filled in and landscaped. The existing Windsor Bridge will be removed once the new bridge is open to traffic. Construction work to build the replacement bridge is expected to take about two years to complete.

Next steps

In early 2017, Roads and Maritime will invite community feedback on the proposed Urban Design and Landscaping Plan for the project.

By locating the new bridge 35 metres downstream of the existing bridge and connecting it to Old Bridge Street there is an opportunity to unify the green space in Thompson Square. This would reduce the number of roads in Thompson Square from three to two, increase the usable area in the square by more than 500 square metres and improve the connection of the square to the river foreshore.

Further information

For more information about the third lane and the benefits of this project for all road users, visit Roads and Maritime's website at rms.nsw.gov.au/windsorbridge

Contact us

For more information please contact the project team:



1800 712 909 (during business hours)



windsor_bridge@rms.nsw.gov.au



Windsor Bridge project
PO Box 973
Parramatta NSW 2124



More information is also available
at rms.nsw.gov.au/windsorbridge

Archaeological testing program update

Expert archaeologists are continuing to carry out the detailed testing program required for the project on Roads and Maritime's behalf. Work began in August 2016 and archaeological testing in the project area is almost complete.

The program has provided valuable insights, that will help inform the Strategic Conservation Management Plan (SCMP) for the project. Information about the program is available at rms.nsw.gov.au/windsorbridge, and results of the testing program will be included in the draft SCMP which will be subject to community and stakeholder consultation in 2017.



An English halfpenny from around 1799, located on the northern bank of the Hawkesbury River during recent archaeological testing



Translating and Interpreting Service

If you need an interpreter, please call the Translating and Interpreting Service (TIS National) on **131 450** and ask them to telephone Roads and Maritime Services on 1800 712 909

Arabic

إذا كنتم بحاجة إلى مترجم، الرجاء الاتصال بخدمة الترجمة الخطية والشفوية (TIS National) على الرقم 1800 712 909، والطلب منهم الاتصال بوكالتكم Roads and Maritime Services على الرقم 131 450

Cantonese

若你需要口譯員，請致電 131 450 聯絡翻譯和口譯服務署 (TIS National)，要求他們致電 1800 712 909 聯絡 Roads and Maritime Services。

Mandarin

如果你需要口譯員，請致電 131 450 联系翻译和口译服务署 (TIS National)，要求他们致电 1800 712 909 联系 Roads and Maritime Services。

Greek

Αν χρειάζεστε διερμηνέα, παρακαλείστε να τηλεφωνήσετε στην Υπηρεσία Μετάφρασης και Διερμηνείας (Εθνική Υπηρεσία ΤΙΣ) στο **131 450** και ζητήστε να τηλεφωνήσουν Roads and Maritime Services στο 1800 712 909

Italian

Se desiderate l'assistenza di un interprete, prego telefonare al Servizio Interpreti e Traduttori (TIS National) al **131 450** chiedendo di contattare Roads and Maritime Services al 1800 712 909

Korean

통역사가 필요하시면 번역통역서비스 (TIS National) 에 **131 450** 으로 연락하여 이들에게 1800 712 909 번으로 Roads and Maritime Services 에 전화하도록 요청하십시오.

Vietnamese

Nếu cần thông ngôn viên, xin quý vị gọi cho Dịch Vụ Thông Phiên Dịch (TIS Toàn Quốc) qua số **131 450** và nhờ họ gọi cho Roads and Maritime Services qua số 1800 712 909

December 2016

RMS 16.575

Privacy Roads and Maritime Services ("RMS") is subject to the Privacy and Personal Information Protection Act 1998 ("PIIP Act") which requires that we comply with the Information Privacy Principles set out in the PIIP Act. All information in correspondence is collected for the sole purpose of assisting in the delivery of this project. The information received, including names and addresses of respondents, may be published in subsequent documents unless a clear indication is given in the correspondence that all or part of that information is not to be published. Otherwise RMS will only disclose your personal information, without your consent, if authorised by the law. Your personal information will be held by RMS at 27 Argyle Street, Parramatta. You have the right to access and correct the information if you believe that it is incorrect.



Transport
**Roads & Maritime
Services**