

**Thompson Square
Windsor NSW**

Strategic Conservation Management Plan


**Volume 3: Windsor Bridge Replacement Project
specific information**

THIS PAGE LEFT INTENTIONALLY BLANK

Contents

Contents	3
1 Introduction	7
1.1 Project Description.....	7
1.2 Structure of SCMP	7
1.3 Aims and Objectives of Volume 3	7
1.4 Audience.....	8
1.5 Site Identification	8
1.6 Ownership	11
1.7 Approach and Methodology	13
2 Minister's Conditions of Approval	14
3 Environmental Impact Statement: Environmental Management Measures	33
4 Application of SCMP Policies.....	38
5 List of heritage items, impacts and mitigation measures	54
6 Summary and Conclusion	60

DOCUMENT CONTROLS

Business Name	Austral AHMS Joint Venture (AAJV)	
Client	NSW Roads and Maritime Services	
Project/Document Title	Thompson Square, Windsor NSW – Strategic Conservation Management Plan	
Project No.	WIND0001	
Issue	3.5	
Date	January 2018	
Reviewed by:		
MacLaren North		January 2018

List of figures

Figure 1: The study area.....	9
Figure 2: Map showing the heritage items within Thompson Square Conservation Area and the study area.....	10
Figure 3: Land ownership plan.....	12

List of tables

Table 1: Minister's Objectives for implementing the Conditions of Approval: Part B Pre-Construction Conditions.....	14
Table 2: Infrastructure Approval – Pre-Construction Conditions, PART B Cultural Heritage.....	15
Table 3 Infrastructure Approval – Pre-Construction Conditions, PART B Cultural Heritage.....	19
Table 4: Infrastructure Approval – Part C – Environmental Performance.....	23
Table 5: PART C, Urban Design and Landscaping. Refer to the UDLP for full compliance details.....	27
Table 6: PART D, Environmental Management, Reporting and Audit.....	29
Table 7: PART D, Community Involvement.....	31
Table 8: Historic Heritage.....	33
Table 9: Maritime Archaeology.....	34
Table 10: Aboriginal Heritage.....	35
Table 11: Visual Impact, Urban Design and Landscaping.....	37
Table 12: Noise and Vibration.....	37
Table 13: Articulating a long-term vision for Thompson Square and the study area.....	38
Table 14: Built Heritage.....	38
Table 15: Management of Historic Fabric.....	38
Table 16: Future Infrastructure.....	39
Table 17: Maintenance.....	40
Table 18: Aboriginal Cultural Heritage.....	41
Table 19: Landscape and Environs – General.....	41
Table 20: Public Domain Environment.....	44
Table 21: Commercial Activities within the Public Domain.....	44
Table 22: Aboriginal Archaeology.....	45
Table 23: Historical Archaeology.....	46
Table 24: Maritime Archaeology.....	48
Table 25: Interpretation.....	49
Table 26: Vistas, Views and Setting.....	51
Table 27: Archival.....	51
Table 28: Statutory Approvals.....	51

Table 29: Improving the Understanding of the Study Area.	52
Table 30: Consultation.	53
Table 31: Security.	53
Table 32 Mitigation measures for specific heritage items identified in the Minister's Conditions of Approval	54

1 Introduction

1.1 Project Description

In December 2015, the Austral AHMS Joint Venture (AAJV) was commissioned by NSW Roads and Maritime Services (RMS) to prepare a Strategic Conservation Management Plan (hereafter SCMP) for the project area for the Windsor Bridge Replacement Project (hereafter WBRP), incorporating Thompson Square and the surrounding area of Windsor NSW. The purpose of the report is to provide a framework for managing the heritage significance of the study area within its context as an important and historic town centre.

The preparation of an SCMP for the study area is one of the Minister's Conditions of Approval for the WBRP. This project was approved on 20 December 2013 by the NSW Minister for Planning (Application No SSI-4951). Information relating directly to the WBRP, including the conditions of consent and how they have been met, is in Volume 3 of this SCMP.

This SCMP has been prepared in accordance with the standards and guidelines of the NSW Office of Environment and Heritage (OEH) and Heritage Council, the principles of *The Burra Charter: The Australia ICOMOS Charter for Places of Cultural Significance* and best heritage practice.

1.2 Structure of SCMP

This SCMP has been divided into an Executive Summary and four volumes, aimed at providing specific information for targeted audiences, as follows:

- Volume 1: Site Identification, Historical Background and Heritage Status
- Volume 2: Physical Analysis, Assessment of Significance, Constraints and opportunities, Policies and Implementation (this volume)
- Volume 3: Windsor Bridge Replacement Project (WBRP) specific information, including related policies and recommendations
- Volume 4: Consultation Report.

Volumes 1 to 3 have been prepared by the AAJV. Volume 4 has been prepared by RMS.

This document has been structured to ensure its longevity following the conclusion of the WBRP. Volumes 1 and 2 contain information relevant to the long-term conservation and management of the study area, while Volume 3 contains the information specifically relevant to the WBRP. Volume 4 contains the results of the community consultation process undertaken as part of this project. At the conclusion of the project, the information and policies presented in Volumes 3 and 4 will no longer be relevant; however, Volumes 1 and 2 will continue to provide the basis for the ongoing management of Thompson Square and environs.

1.3 Aims and Objectives of Volume 3

This report forms Volume 3 of the SCMP and is the principal guiding document for the WBRP in relation to the Minister's Conditions of Approval and heritage proposals outlined in the Environmental Impact Statement (EIS).

The objectives of Volume 3 are to:

- guide the conservation, reuse, interpretation and management of the heritage values of Thompson Square, and the project area, to ensure the values of the place are maintained and, where appropriate, enhanced

- provide specific mitigation measures for the Thompson Square Conservation Area and individually listed items to minimise impact and ensure that the final measures selected are appropriate and the least intrusive options, as per B1(c) of the Conditions of Approval
- influence changes to the detailed design of the approved project in ways that mitigate heritage impacts where possible, within the context of the approved project.

1.4 Audience

The audience for this volume is primarily NSW RMS, as the project proponent, and OEH and the Department of Planning and Environment (DPE) as regulators.

This volume of the SCMP encapsulates the project's responses to the Minister's Conditions of Approval and the findings of the significance investigations contained in Volumes 1 and 2 of the SCMP, and the Aboriginal, historic and maritime archaeological investigation programmes undertaken in 2016.

It is anticipated that, at the completion of the WBRP, this volume of the SCMP will become redundant, and will serve as a historical document outlining the work undertaken during the project, whereas Volumes 1 and 2 will continue to provide the long-term heritage management framework for the precinct.

1.5 Site Identification

The study area, incorporating Thompson Square and environs, is located in the centre of the town of Windsor, immediately south of the Hawkesbury River. Thompson Square is the oldest public square in Australia and notable for the colonial Georgian buildings that surround it. The site is made up of George Street, Bridge Street, Thompson Square Road and The Terrace – a series of roadways that surround a small turfed reserve. Directly north is Windsor Bridge, spanning the Hawkesbury to connect with Wilberforce Road. Figure 1 below shows the project area (outlined in red). Figure 2 shows the existing listed heritage items that are within the Thompson Square Heritage Conservation Area.

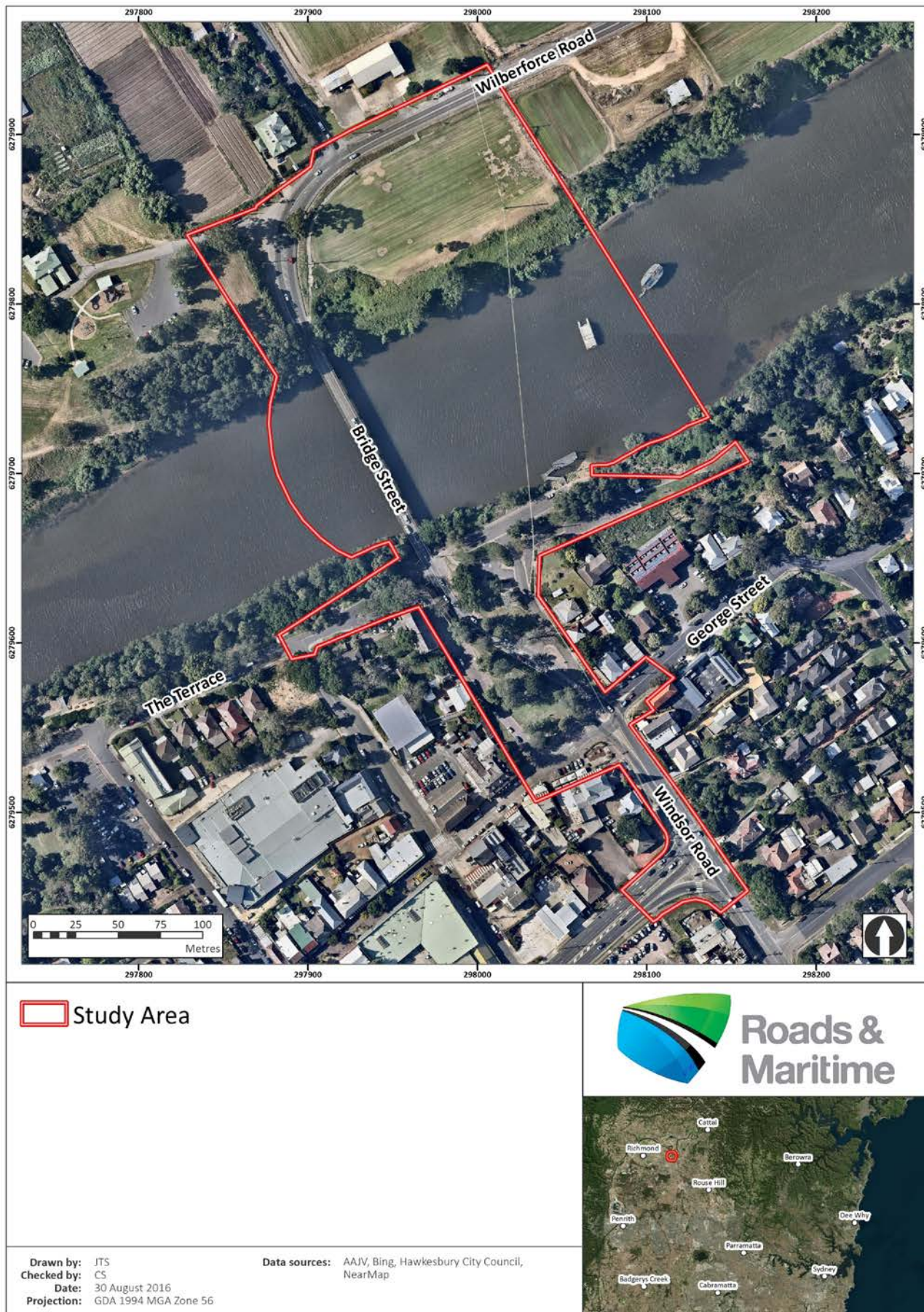


Figure 1: The study area.

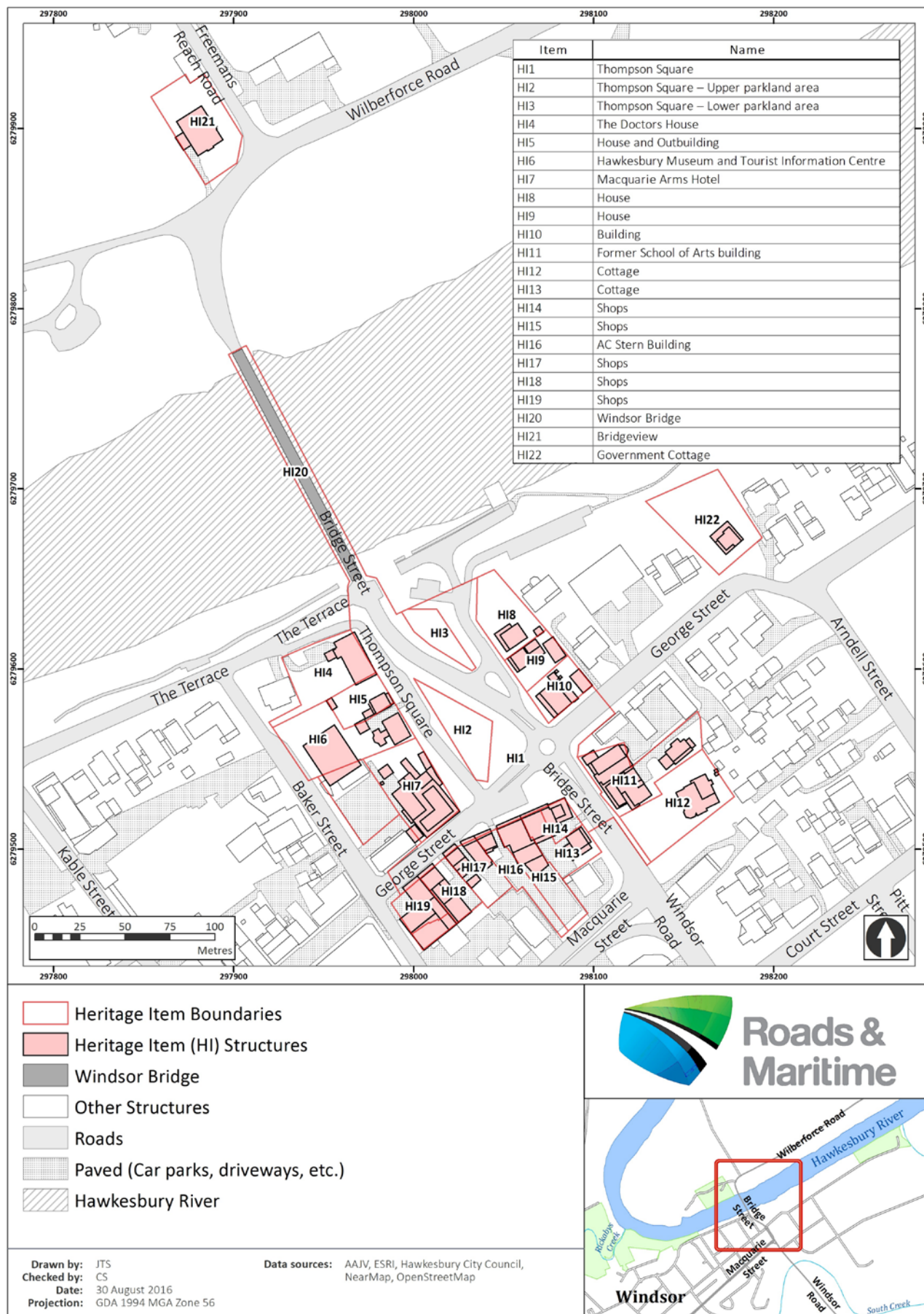


Figure 2: Map showing the heritage items within Thompson Square Conservation Area and the study area.

1.6 Ownership

The study area is in multiple ownerships, including state and local government, and the private commercial and residential sectors (Figure 3).

The land underlying the road reserves and the areas designated for the new planned bridge approaches are owned by Hawkesbury City Council (HCC).

NSW RMS owns the existing Windsor Bridge and will own the new bridge assets created by this project.

The public domain land of Thompson Square is owned and managed by HCC.

The buildings within and along the boundaries of the study area are owned by a variety of private owners.

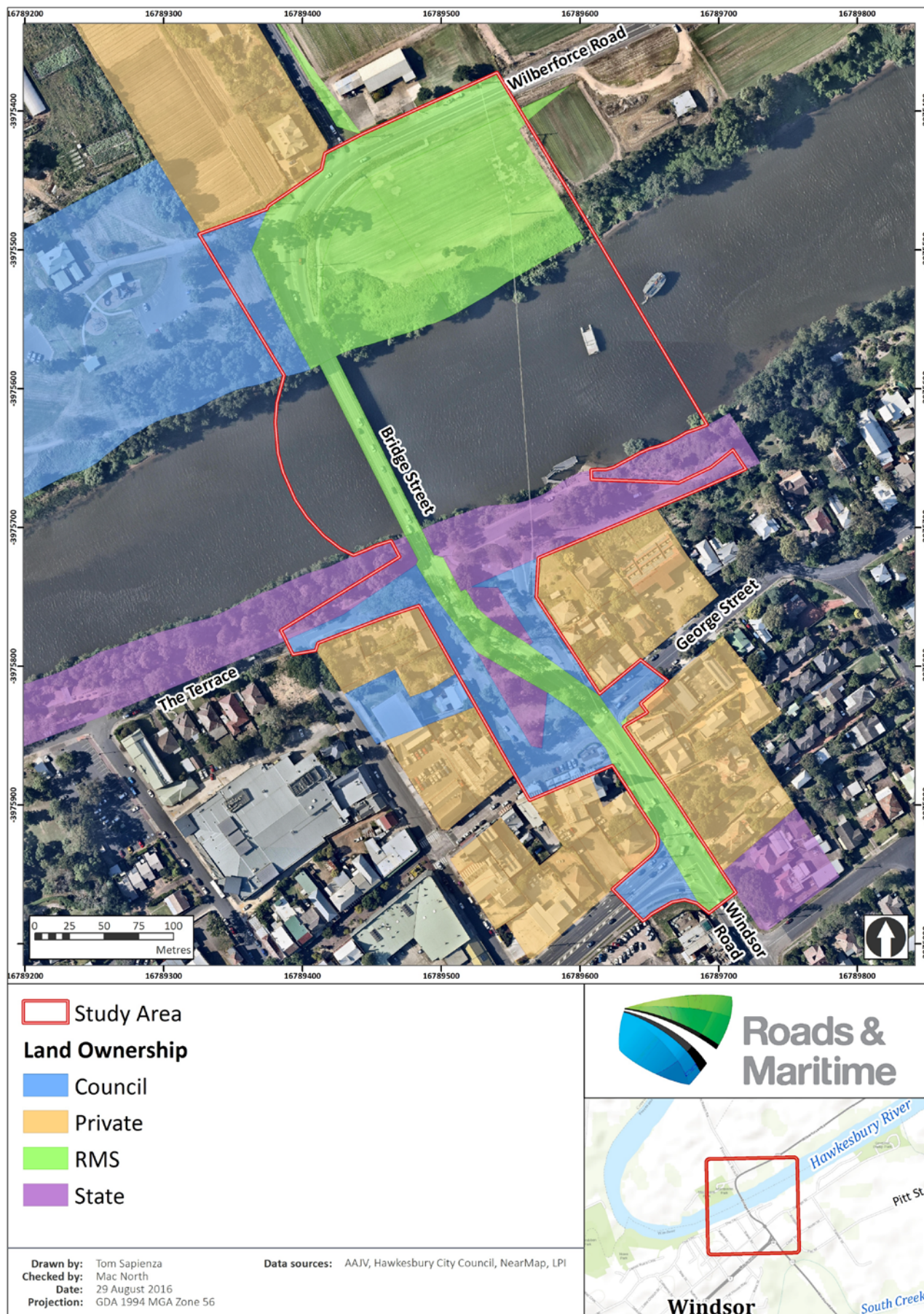


Figure 3: Land ownership plan.

1.7 Approach and Methodology

The preparation of an SCMP for the study area is one of the Conditions of Approval for the WBRP, which was approved on 20 December 2013 by the NSW Minister for Planning (Application No SSI-4951). The relevant condition is:

*'B1 – the Applicant shall submit a **Strategic Conservation Management Plan (CMP)** to the Director-General for the project area on the southern side of the Hawkesbury River as shown in Appendix 2 Strategic Conservation Management Plan study area. The CMP shall be prepared by appropriately qualified and/or experienced heritage consultants. The nominated heritage consultant(s) is to have appropriate experience and skills including land and maritime archaeology, landscape, engineering and built heritage expertise and documented experience in the preparation and implementation of CMPs.*

The Applicant shall not carry out any pre-construction or construction activities on the southern side of the Hawkesbury River for the SSI [State Significant Infrastructure approval] before the CMP has been approved by the Director-General. The CMP is to provide for the conservation of the Thompson Square Conservation Area. The CMP shall be prepared in consultation with the Heritage Branch, OEH and in accordance with the relevant guidelines of the NSW Heritage Council and include, but not be limited to:

- a) Identification of the heritage value of the Thompson Square Conservation Area, including statements of significance for the Thompson Square Conservation Area and any individual listings within the conservation area of local, state or national heritage items;*
- b) The development of heritage design principles for the project to retain the significance of the Thompson Square Conservation Area and any individually listed items within the conservation area or in proximity to the site, with the exception of Item 3 (the Thompson Square lower parkland area) and Item 20 (Windsor Bridge) in Table 1 of Appendix 1;*
- c) Specific mitigation measures for the Thompson Square Conservation Area and individually listed items to minimise impact and to ensure that the final measures selected are appropriate and the least intrusive option;*
- d) Changes to the detailed design of the SSI to mitigate heritage impacts.'*

The SCMP is being prepared in consultation with the Heritage Division of OEH and in accordance with the relevant guidelines of the NSW Heritage Council, as noted above. The SCMP only extends to the front facades of the buildings within the study area on the southern side of the Hawkesbury River, as required by the above Condition of Approval. The SCMP considers the public domain contribution of these buildings to the study area, but does not undertake a detailed assessment of their fabric or detailed recommendations for the conservation of individual structures.

Site inspections of the study area were carried out between April and July 2016. The general locality was also inspected. An extensive programme of historic, Aboriginal and maritime archaeological testing was undertaken between August and November 2016.

2 Minister's Conditions of Approval

This section outlines all the WBRP objectives as they relate to heritage.

Table 1: Minister's Objectives for implementing the Conditions of Approval: Part B Pre-Construction Conditions

Number	Objectives	Measures
a)	To minimise impacts on heritage sites, including sites within the Thompson Square Conservation Area and archaeological sites in, and in the vicinity of, the site.	<p>AAJV has undertaken a series of investigations to minimise the heritage impact of the works. Given the nature of the approved bridge project, it is not possible to fully mitigate or eliminate heritage impacts.</p> <p>An Archaeological Investigation Program (historic, maritime and Aboriginal heritage) was undertaken between August and October 2016.</p> <p>The following reports were also prepared:</p> <ul style="list-style-type: none"> - SCMP - Detailed Archival Recording - Archaeological Research Designs - Aboriginal Test Excavation Report - Historical Test Excavation Report - Maritime Test Excavation Report - Interpretation Strategy - Interpretation Plan - Heritage input to the Urban Design and Landscape Plan (UDLP).
b)	To salvage and interpret any impacted heritage sites, including historical archaeologically significant sites within, and in the vicinity of, the site.	<p>An Archaeological Investigation Program was undertaken between August and October 2016.</p> <p>A salvage archaeological excavation will occur in 2017/2018.</p> <p>Further archaeological salvage and monitoring will occur during construction (anticipated 2018/2019).</p>

		An Interpretation Plan has been prepared and interpretation will be implemented as a part of this project.
c)	To conduct archival recording and further research of the Thompson Square Conservation Area.	<p>A Detailed Archival Recording has been prepared.</p> <p>The SCMP Volume 1 provides a highly detailed, in-depth history of Thompson Square and the study area and a more detailed significance assessment.</p>
d)	To enhance and conserve the Thompson Square Conservation Area, the heritage items identified in Table 1 of Appendix 1, with the exception of Item 3 (the Thompson Square lower parkland area) and Item 20 (Windsor Bridge) and any archaeological sites within, and in the vicinity of, the site, while providing for the construction of a replacement bridge at Windsor.	<p>The WBPR will have no physical impact on the heritage items identified in Table 1 of Appendix 1, with the exception of the lower parkland areas (Item 3) and Windsor Bridge (Item 20).</p> <p>The visual amenity of the heritage items will be unavoidably impacted upon by the approved bridge project. The height of the new bridge has been lowered as far as technically feasible to reduce visual impact. The western bridge abutment will be the subject of interpretive masonry treatment to reduce visual impact.</p> <p>While there will be impacts to the upper parkland area from the new bridge, the WBPR presents the opportunity to reshape and reconfigure the two reserves of Thompson Square, consolidating the upper and lower sections and reinstating the unified nature of Thompson Square's formative years.</p> <p>An Interpretation Plan has been prepared for the study area, which aims to interpret the history and significance of Thompson Square and Windsor Bridge.</p>
e)	To incorporate changes in the final design of the SSI, where practical, to achieve Objectives (a), (b) and (d) above.	Addressed above and throughout SCMP Volume 3 (this document).

Table 2: Infrastructure Approval – Pre-Construction Conditions, PART B Cultural Heritage

Number	Objectives	Measures
B1	The Applicant shall submit a Strategic Conservation Management Plan (CMP) to the Director-General for the project area on the southern side of	Volumes 1 to 3 of the SCMP represent compliance with this condition.

	<p>the Hawkesbury River as shown in Appendix 2 Strategic Conservation Management Plan study area. The CMP shall be prepared by appropriately qualified and/or experienced heritage consultants. The nominated heritage consultant(s) is to have appropriate experience and skills including land and maritime archaeology, landscape, engineering and built heritage expertise and documented experience in the preparation and implementation of CMPs.</p>	<p>The SCMP has been prepared by appropriately qualified consultants who were approved by the DPE and OEH in March 2016.</p>
	<p>The Applicant shall not carry out any pre-construction or construction activities on the southern side of the Hawkesbury River for the SSI before the CMP has been approved by the Director-General. The CMP is to provide for the heritage conservation of the Thompson Square Conservation Area. The CMP shall be prepared in consultation with the Heritage Branch, OEH and in accordance with the relevant guidelines of the NSW Heritage Council and include, but not be limited to:</p>	<p>No pre-construction or construction activities will be undertaken prior to the approval of the SCMP by the Director-General.</p> <p>The SCMP has been prepared in consultation with the Heritage Division of the OEH and in accordance with the relevant guidelines of the NSW Heritage Council.</p>
	<p>a) identification of the heritage value of the Thompson Square Conservation Area, including statements of significance for the Thompson Square Conservation Area and any individual listings within the conservation area of any local, state or national heritage items</p>	<p>The SCMP identifies all elements of value within and adjacent to the study area, including the individually listed sites. An updated statement of significance based on the SCMP research and findings has been prepared for the site.</p> <p>See SCMP Volume 2, section 3.</p>
	<p>b) the development of heritage design principles for the project to retain the heritage significance of the Thompson Square Conservation Area and any individually listed item within the conservation area or in proximity to the site, with the exception of Item 3 (the Thompson Square lower parkland area) and Item 20 (Windsor Bridge) in Table 1 of Appendix 1</p>	<p>A set of conservation principles are set out in SCMP Volume 2, section 4.3, and a series of policies in SCMP Volume 2, section 5. These have been prepared as part of the SCMP and are aimed at protecting and enhancing the heritage significance of the Thompson Square Conservation Area and any individually listed items within the conservation area or in proximity to the site.</p> <p>The specific implementation of the principles and policies is set out in Volume 3, Table 32.</p> <p>An Interpretation Plan has been prepared for the study area, which aims</p>

		to interpret the history and significance of Thompson Square and Windsor Bridge.
	c) specific mitigation measures for the Thompson Square Conservation Area and individually listed items to minimise impact and to ensure that final measures selected are appropriate and the least intrusive option	<p>A series of policies have been prepared as part of the SCMP which aim to protect and enhance the heritage significance of the Thompson Square Conservation Area and any individually listed items within the conservation area or in proximity to the site.</p> <p>See SCMP Volume 2, section 5.</p> <p>The specific implementation of the principles and policies is set out in Volume 3, Table 32.</p> <p>Further mitigation measures will be implemented in the Construction Environmental Management Plan (CEMP) to manage construction-period impacts (e.g. vibration).</p>
	d) changes to the detailed design of the SSI to mitigate heritage impacts.	Addressed throughout SCMP Volume 3 (this document). See below and Table 32 specifically.
	The Applicant shall prepare and submit a detailed Interpretation Plan prior to the commencement of pre-construction and construction activities for the Thompson Square Conservation Area including individually listed sites, non-Aboriginal archaeology and Aboriginal archaeology for the approval of the Director-General. The detailed Interpretation Plan must be prepared in consultation with the OEH and include specific media design, content, location and materials, prepared in accordance with the Guidelines of the NSW Heritage Council.	<p>A detailed Interpretation Plan has been prepared for the study area, which aims to interpret the history and significance of Thompson Square and Windsor Bridge. Specific details on device types, locations, content and materials has been provided within the document.</p> <p>No pre-construction or construction activities will be undertaken prior to the approval of the Interpretation Plan by the Director-General.</p> <p>The Interpretation Plan has been prepared in accordance with the guidelines of the NSW Heritage Council.</p> <p>The Interpretation Plan is in a final draft form, pending input from the Archaeological Salvage program.</p>
B2	Prior to the commencement of pre-construction works on the southern side of the Hawkesbury River, the Applicant shall complete a detailed Archival Recording of all historic heritage sites within the Strategic	A Detailed Archival Recording of all historic heritage sites has been prepared in accordance with the relevant guidelines of the NSW Heritage Council.

	Conservation Management Plan study area in accordance with the Guidelines issued by the NSW Heritage Council and to the satisfaction of the Director-General and in consultation with the NSW Heritage Council. The recording shall include, but not be limited to:	
	a) detailed survey and analysis of Thompson Square Conservation Area, Windsor Bridge and the immediate surrounds using 3D laser scanning	3D laser scanning of the study area has been completed.
	b) photographic and archival recording of all affected heritage sites, as identified in the specialist reports prepared as part of the Environmental Impact Statement for the project. Recording is to be completed.	Photographic archival recording has been completed.
	Copies of these recordings should be made available to the Director-General, the NSW Heritage Council, the Local Studies Library and the Local Historical Society in Windsor.	An electronic copy has been made available to relevant stakeholders. Final copies shall be printed in accordance with archival guidelines and lodged with these bodies once the document is approved.

Table 3 Infrastructure Approval – Pre-Construction Conditions, PART B Cultural Heritage.

Number	Objectives	Measures
B3	The Applicant shall undertake an Archaeological Investigation Program comprising Aboriginal and non-Aboriginal Heritage in the project area on the southern side of the Hawkesbury River, prior to the commencement of preconstruction and construction activities in the southern area. The program shall be conducted to the satisfaction of the Director-General and in accordance with:	An Aboriginal and historical Archaeological Testing Program was undertaken on the southern side of the Hawkesbury River between August and October 2016. Following approval by the DPE, Aboriginal and historical archaeological testing was also undertaken on the northern side of the Hawkesbury River.
	a) the Heritage Council's Archaeological Assessments Guideline (1996) using a methodology prepared, in consultation with the NSW Heritage Council for non-Aboriginal heritage	Prepared in accordance with the relevant NSW Heritage Council guidelines and in consultation with the delegate of the Heritage Council.
	b) prepared in consultation with the OEH (Aboriginal heritage) and the Aboriginal stakeholders.	OEH (Aboriginal heritage) and the Aboriginal stakeholders were consulted during the preparation of the testing methodology and research design.
	The Archaeological Investigation Program is to be undertaken by an archaeological heritage consultant approved by the Director-General in consultation with the NSW Heritage Council and by the OEH (Aboriginal heritage) and by an Excavation Director who shall demonstrate an ability to comply with the Heritage Council's Criteria for the Assessment of Excavation Directors (July 2011) and in particular must be able to demonstrate compliance with Criterion A.4 that: 'work under any approvals previously granted by the Heritage Council has been completed in accordance with the conditions of that consent and the final report has been submitted to the NSW Heritage Council.'	AAJV was approved by the Director-General. The Excavation Directors for each segment of work were assessed against and approved under the Heritage Council's criteria for this role. The Excavation Directors have shown compliance with Criterion A.4.
	The Archaeological Investigation Program shall include archaeological testing and geophysical investigation, as required for the significance assessment.	Archaeological testing and geophysical investigations were undertaken. See Aboriginal Test Excavation Report for details of the geophysical investigations undertaken.

	<p>The results of the Archaeological Investigation Program are to be detailed in a Historic Archaeological Report and a Detailed Salvage Strategy comprising the non-Aboriginal and Aboriginal heritage findings. These are to be prepared in consultation with the OEH (Heritage Branch and Aboriginal heritage) and to the satisfaction of the Director-General, and shall include, but not necessarily be limited to:</p>	<p>A Historic Archaeological Testing Report has been prepared.</p> <p>A Maritime Archaeological Testing Report has been prepared.</p> <p>A Detailed Salvage Strategy has been prepared. This document contains the suggested approach to future Aboriginal, historic and maritime archaeology within the context of the project.</p> <p>These documents have been approved by the Secretary, DPE.</p>
	a) detailed recommendations for further archaeological work	Included within the Detailed Salvage Strategy.
	b) consideration of measures to avoid or minimise disturbance to archaeology sites, where archaeology of historical and Aboriginal heritage archaeological significance are found to be present	Included within the Detailed Salvage Strategy.
	c) where impacts cannot be avoided by construction of the SSI, recommend actions to salvage and interpret salvaged sites, conduct further research and archival recording of the historic heritage and Aboriginal heritage value of each site, and to enhance and preserve the archaeology of historical non-Aboriginal and Aboriginal heritage significance	Included within the Detailed Salvage Strategy.
	d) consideration of providing visual evidence of heritage sites within the final landscape design of the SSI to preserve and acknowledge the heritage value of the Thompson Square Conservation Area and the site	Included within the Interpretation Plan and UDLP.
	e) management and mitigation measures to minimise impacts due to preconstruction and construction activities	Included within the Detailed Salvage Strategy.
	f) preparation of a Hawkesbury Region Sand Bodies Study to the satisfaction of the Director-General and undertaken by	A Hawkesbury Region Sand Bodies Study has been prepared. Pleistocene and early Holocene archaeological deposits were encountered and their

	<p>suitably qualified and experienced persons whose appointment has been approved by the Director-General, in the event that any Pleistocene and/or early Holocene is encountered during the works referred to in condition B3. This study is required to be prepared in consultation with the Department, the OEH and Aboriginal stakeholders and is required to:</p>	<p>management is addressed within the Detailed Salvage Strategy.</p> <p>The Hawkesbury Region Sand Bodies Study has been submitted to DPE and OEH for review and approval.</p>
	<p>i) be undertaken in accordance with a research design and action plan approved by the Director-General prior to the study commencing</p>	<p>The Hawkesbury Region Sand Bodies Study Research Design was approved by DPE in consultation with OEH prior to the fieldwork commencing.</p>
	<p>ii) be directed towards locating and evaluating sand bodies likely to contain evidence of early Aboriginal habitation in the Hawkesbury River area, in the project location in areas disturbed by construction of the project, including the existing Windsor Bridge and new bridge locations</p>	<p>Contained within the Hawkesbury Region Sand Bodies Study.</p>
	<p>iii) findings are to be made publicly available</p>	<p>The Hawkesbury Region Sand Bodies Study to be made publicly available following finalisation.</p>
	<p>iv) make recommendations concerning the preservation and future management of any finds.</p>	<p>Contained within the Hawkesbury Region Sand Bodies Study and Detailed Salvage Strategy.</p>
	<p>In the event that any Pleistocene and/or early Holocene is encountered, the recommendations of the Hawkesbury Region Sand Bodies Study are to be fully complied with.</p>	<p>Contained within the Detailed Salvage Strategy.</p>

B4	The Applicant shall undertake an Archaeological Investigation Program comprising Aboriginal Heritage in the northern side of the Hawkesbury River project area, prior to the commencement of pre-construction and construction activities in the northern area. The program shall be conducted to the satisfaction of the Director General and prepared in consultation with the OEH (Aboriginal heritage) and the Aboriginal stakeholders.	An Archaeological Investigation Program was undertaken on the northern side of the Hawkesbury River between August and October 2016 following approval by the Delegate of the Secretary, DPE.
	The results of the Archaeological Investigation Program conducted in the project area on the northern side of the Hawkesbury River are to be detailed in a Historic Archaeological Report and a Detailed Salvage Strategy comprising the Aboriginal heritage findings in northern side of the Hawkesbury River. These are to be prepared in consultation with the OEH (Aboriginal heritage) and to the satisfaction of the Director-General, and shall include but not necessarily be limited to:	<p>A Historic Archaeological Report has been prepared.</p> <p>A Detailed Salvage Strategy has been prepared.</p>
	a) detailed recommendations for further Aboriginal archaeological work	No further Aboriginal archaeological work is recommended north of the Hawkesbury River within the project area, due to the very low densities of Aboriginal artefactual materials found in this area.
	b) consideration of measures to avoid or minimise disturbance to Aboriginal sites, where archaeology of Aboriginal heritage archaeological significance are found to be present	Not applicable due to a) above.
	c) where impacts cannot be avoided by construction of the SSI, recommend actions to salvage and interpret salvaged sites, conduct further research and archival recording of the Aboriginal heritage value of each site, and to enhance and preserve the Aboriginal heritage significance	Not applicable due to a) above.

	d) consideration of providing visual evidence of heritage sites within the final landscape design of the SSI to preserve and acknowledge the Aboriginal heritage value of the northern project area	Not applicable due to a) above.
	e) management and mitigation measures to minimise impacts due to preconstruction and construction activities	Not applicable due to a) above. General 'stop work' protocol for unexpected finds recommended in the Detailed Salvage Strategy for this area.
	f) preparation of a Hawkesbury Region Sand Bodies Study as detailed in Condition B3(f).	There is no sand body north of the river; therefore, this area is not included within this Hawkesbury Region Sand Bodies Study.

Table 4: Infrastructure Approval – Part C – Environmental Performance.

Number	Objectives	Measures
C1	During all stages of the project, the Applicant must comply with all programs and reports prepared by the Applicant in accordance with conditions B1 to B8 of this consent.	All works associated with the WBRP will comply with the relevant heritage programmes and reports.
C2	In the event that any Pleistocene and/or early Holocene is encountered during any construction activities, condition 83(f) applies as if the relevant construction works were works carried out under condition 83.	Pleistocene and Holocene material was encountered during the testing phase. The extent of the sand body within the project area has therefore been predicted and mapped in the Hawkesbury Region Sand Body Study and the Aboriginal Archaeological Testing Report. Salvage as outlined in the Detailed Salvage Strategy will be undertaken prior to the commencement of construction work.
C3	This consent does not allow the Applicant to disturb any human remains found on the site without further approval from the Director-General, and/or the NSW Police Force.	An unexpected finds procedure for human remains will be included within the CEMP for the project.
C4	Prior to the commencement of pre-construction works the Applicant shall nominate, for the approval of the Director-General, a specialist Heritage Manager and Heritage Consultant team for the construction works. The consultant(s) shall have appropriate qualifications and experience	A Heritage Manager and Heritage Consultant team for the construction works to be nominated by RMS.

	commensurate with the scope of the works, which shall include land and maritime archaeology, landscape, engineering and built heritage expertise and have demonstrated experience in the implementation of CMPs. During pre-construction and construction works, the specialist Heritage Manager and heritage consultant team shall:	
	a) advise on the detail design resolution of new works, inspect new works, advise on design and installation of services (to minimise impacts on significant fabric and views) and undertake on-site Heritage inductions	Noted.
	b) provide input to the compliance reporting required under condition D6	Noted.
	c) prepare a report (illustrated by works' photographs) to be submitted to the Director-General for approval within 6 months of the completion of the works which describes the work, any impacts/damage and corrective works carried out and includes a revised Statement of Significance in accordance with NSW Heritage Council guidelines.	Noted.
C5	Within 12 months of completing the work required under conditions B3 and B4, the Applicant shall, in consultation with the NSW Heritage Council, the OEH (Aboriginal heritage) and to the satisfaction of the Director-General, prepare and submit a further report containing:	Noted.
	a) an executive summary of the archaeological programme	Noted.
	b) the findings of the excavations, including detailed artefact analysis for non-Aboriginal and Aboriginal heritage	Noted.
	c) the identification of a final repository for finds of non-Aboriginal heritage significance	Noted.

	d) artefact analysis and Aboriginal Site Impacts Recording Forms (ASIR), and the identification of final storage location for all Aboriginal objects recovered (testing and salvage), prepared in consultation with the Aboriginal stakeholders, the OEH (Aboriginal heritage) and to the satisfaction of the Director-General	Noted.
	e) detailed information on the excavation including the aim, the context for the excavation, procedures, treatment of artefacts (cleaning, conserving, sorting, cataloguing, labelling, scale photographs and/or drawings, location of repository) and analysis of the information retrieved	Noted.
	f) nominated repository for the items, which has agreed to take the items	Noted. At this stage, it is anticipated that the historical and maritime artefacts will be lodged with the Windsor Museum and/or HCC, and the Aboriginal artefacts with the Australian Museum and/or the Registered Aboriginal Parties. This is subject to separate negotiation and confirmation following the completion of the Salvage Excavation works.
	g) conclusions from the archaeological programme. This information must include a reassessment of the site's heritage significance comprising non-Aboriginal and Aboriginal heritage, statement(s) on how archaeological investigations at this site have contributed to the community's understanding of the Site and other Comparative Site Types and recommendations for the future management of the site/s	Noted.
	h) details of how this information about the excavations have been publicly disseminated (for example, include copies of press	Noted.

	releases, public brochures and information signs produced to explain the archaeological significance of the sites).	
--	---	--

Table 5: PART C, Urban Design and Landscaping. Refer to the UDLP for full compliance details.

Number	Objectives	Measures
C47	The Urban Design and Landscape Plan referred to in condition B7 must be prepared and implemented and the works approved by that Plan must be completed within 12 months of the commissioning of the project. The Plan shall be prepared in consultation with the OEH, and Hawkesbury Council and shall be consistent with the CMP referred to in condition B1 and include, but not necessarily be limited to:	The UDLP has been prepared in consultation with OEH, HCC and the community.
	a) the proposed landscaping of Thompson Square Conservation Area, as shown on the map in Appendix 2 Strategic Conservation Management Plan study area	Contained within the UDLP.
	b) use of the heritage design principles developed under the CMP, and take into account appropriate landscaping in the vicinity of heritage items to minimise heritage impacts	AAJV (authors of the SCMP) has had input into and reviewed the UDLP during its preparation.
	c) a description of locations along the project corridor directly or indirectly impacted by the construction of the project (e.g. temporary ancillary facilities, access tracks, etc.) and details of the strategies to progressively rehabilitate regenerate and/or revegetate the locations with the objective of promoting biodiversity outcomes and visual integration. Details of species to be replanted revegetated shall be provided, including their appropriateness to the area and considering existing vegetation and habitat for threatened species	Contained within the UDLP.
	d) location of existing vegetation and proposed landscaping (including use of indigenous and endemic species where possible) and design features	Contained within the UDLP.
	e) graphics such as sections, perspective views and sketches for key elements of the project (including, but not limited to, built elements such as retaining walls, cuttings, abutments and street furniture)	Contained within the UDLP.

	f) final design details of the proposed external materials and finishes, including schedules and a sample board of materials and colours; including justification for sustainability of materials including design and installation techniques as well as long term maintenance and their suitability in terms of:	Contained within the UDLP.
	i) function (ability to withstand heavy vehicle usage and public setting)	Contained within the UDLP.
	ii) architectural period/style (respecting the simple Colonial Georgian style)	Contained within the UDLP.
	iii) landscape suitability (Le. suited to both usage and context)	Contained within the UDLP.
	iv) heritage context.	Contained within the UDLP.
	g) location and design treatments for any associated footpaths and cyclist elements, and other features such as seating, lighting (in accordance with AS 4282-1997 Control of the Obtrusive Effect of Outdoor lighting), fencing, and signs	Contained within the UDLP.
	h) take into account appropriate roadside plantings and landscaping in the vicinity of heritage items and ensure no additional heritage impacts	Contained within the UDLP.
	i) detailed design drawings of the proposed works including, but not limited to, road pavements, pedestrian pavements, kerb treatments, abutments, garden beds	Contained within the UDLP.
	j) strategies for progressive landscaping of other environmental controls such as erosion and sedimentation controls, drainage and noise mitigation	Contained within the UDLP.
	k) the lighting, street furniture and other fixtures shall be consistent with Crime Prevention Through Environmental Design Principles (CPTED) where possible	Contained within the UDLP.

	l) the installation of services to support events such as lighting, electricity, water, sewer, vehicle access and communications technology should be considered and be inherent in the design. Refer to Council's Sustainable events Policy (on Council's web site: http://council.hawkesbury.nsw.gov.au/masterviewui/modules/documentmaster/getdocument.aspx?docsetid=3701656)	Contained within the UDLP.
	m) monitoring and maintenance procedures for the vegetated built elements, rehabilitated vegetation and landscaping (including weed control) including performance indicators, responsibilities, timing and duration and contingencies where rehabilitation of vegetation and landscaping measures fail	Contained within the UDLP.
	n) evidence of consultation with the NSW Heritage Council, Hawkesbury City Council and community on the proposed strategy prior to its finalisation.	Contained within the UDLP. Consultation on the UDLP was carried out in March 2017.

Table 6: PART D, Environmental Management, Reporting and Audit.

Number	Objectives	Measures
D5	As part of the CEMP for the project, the Applicant shall prepare and implement the following sub plan(s):	
(e)	A Construction Heritage Management Sub-plan to detail how construction impacts on Aboriginal and non-Aboriginal heritage will be avoided, minimised and managed. The sub-plan shall be prepared by an appropriately qualified heritage consultant(s) approved by the Director-General and the OEH (Aboriginal heritage) and be developed in consultation with registered Aboriginal stakeholders, and include, but not necessarily be limited to:	To be prepared by others in accordance with the framework set out in the SCMP and other supporting heritage documents.
(i)	Details of management measures and strategies for protection, excavation, salvage and archival recording, and/or conservation of heritage items and sites that will be directly or indirectly	To be developed by others upon appointment of the construction contractor.

	impacted during construction (including further archaeological investigations, salvage measures and/or measures to protect unaffected sites during construction works in the vicinity)	
(ii)	Procedures for dealing with previously unidentified non-Aboriginal and Aboriginal objects (excluding human remains) including cessation of works in the vicinity, assessment of the significance of the items(s) and determination of appropriate mitigation measures including when works can re-commence by a suitably qualified and experienced archaeologist in consultation with the Department, OEH and registered Aboriginal stakeholders and assessment of the consistency of any new non-Aboriginal and Aboriginal heritage impacts against the approved impacts of the project, and notification to the Department, and the OEH for Aboriginal heritage (in accordance with section 89A of the <i>National Parks and Wildlife Act 1974</i>) and the OEH for non-Aboriginal heritage (in accordance with Section 146 of the <i>NSW Heritage Act 1977</i>)	Policies for unexpected finds are in section 5 of the SCMP and are articulated in more detail in the Detailed Salvage Strategy. These will serve as the basis for the procedures in the Cultural Heritage Management Plan (CHMP).
(iii)	Procedures for dealing with human remains, including cessation of works in the vicinity and notification of the Department, NSW Police Force, OEH and registered Aboriginal stakeholders and not recommencing any works in the area unless authorised by the Department and/or the NSW Police Force); and	Policies for unexpected finds are in section 5 of Volume 2 of the SCMP and are articulated in more detail in the Detailed Salvage Strategy. These will serve as the basis for the procedures in the CHMP.
(iv)	Induction processes (identification, protection) for construction personnel (including procedures for keeping records of inductions) and procedures for ongoing Aboriginal consultation and involvement.	Induction processes were developed for the Archaeological Investigation Program which will serve as the basis for the heritage induction for the construction phase of the project. Final development and delivery of the heritage induction is to be carried out by others.

Table 7: PART D, Community Involvement.

Number	Objectives	Measures
D13	The Applicant shall prepare and implement a Community Communication Strategy for the project. This Strategy shall be designed to provide mechanisms to facilitate communication between the Applicant, the Contractor, the Environmental Representative, the relevant council and the local community (broader and local stakeholders) on the construction and environmental management of the project. The Strategy shall include, but not necessarily be limited to:	Noted.
	a) identification of stakeholders to be consulted as part of the Strategy, including affected and adjoining landowners	The plan identifies all relevant stakeholders for the project.
	b) procedures and mechanisms for the regular distribution of information to stakeholders on the progress of the project and matters associated with environmental management	NSW RMS has regularly distributed information to stakeholders with regard to progress and environmental management through the following mechanisms: <ul style="list-style-type: none"> - Hardcopy and electronic community notifications - Door-knocking - provision of an 'archaeological testing' webpage with regular updates - provision of documents related to the Conditions of Approval on the project website.
	c) procedures and mechanisms through which stakeholders can discuss or provide feedback to the Applicant and/or Environmental Representative in relation to the environmental management and delivery of the project	NSW RMS has a project email and phone number which stakeholders can use to provide feedback.
	d) procedures and mechanisms through which the Applicant can respond to enquiries or feedback from stakeholders in relation to the	NSW RMS has a project email and phone number which can be used to provide feedback to stakeholders.

	environmental management and delivery of the project	
	e) procedures and mechanisms that would be implemented to resolve issues/ disputes that may arise between parties on the matters relating to environmental management and the delivery of the project. This may include the use of an appropriately qualified and experienced independent mediator.	An independent Environmental Representative approved by the DPE is available to resolve issues and disputes that may arise.
	f) consultation to be undertaken for the bridge naming process.	The Community Engagement Strategy will include this process.
	Key issues that should be addressed in the Community Communication Strategy should include (but not necessarily be limited to):	
	i) traffic management (including property access, pedestrian access)	Noted.
	ii) heritage matters	AAJV and RMS have conducted consultation with OEH and the Heritage Council throughout the archaeological investigation programme and development of the SCMP and Interpretation Strategy.
	iii) landscaping/urban design matters	Noted.
	iv) construction activities	Noted.
	v) noise and vibration mitigation and management.	Noted.
	The Applicant shall maintain and implement the Strategy throughout construction of the project. The Strategy shall be approved by the Director-General prior to the commencement of construction.	Noted.

3 Environmental Impact Statement: Environmental Management Measures

This section outlines all the environmental management measures proposed in the Environmental Impact Statement (EIS), as they are related to heritage.

Table 8: Historic Heritage.

Number	Management Measures	Compliance
HH5	Prior to commencing work on the project construction site all construction personnel will undergo a heritage induction which would contain information on heritage values and items in the area and on environmental management measures to minimise potential heritage impacts.	AAJV Heritage Induction (testing) Archaeological Testing Environmental Management Plan (EMP) (testing) Sensitive Area Plans (testing) Requirement of RMS Construction Contract Contractor's CEMP
HH6	All heritage items within the study area will be clearly identified on construction plans to minimise the risk of inadvertent impacts.	Final Detailed Design plans for construction will include the location of heritage items.
HH7	Environmental management measures identified in Section 7.5.5 of the EIS will be implemented to minimise vibration risks and impacts on heritage items.	Archaeological Testing EMP Contractor's CEMP
HH8	Heritage items at risk of vibration impacts will be inspected and monitored periodically during construction to identify any construction-related impacts. If impacts are detected, work in the area will cease and appropriate environmental management measures will be implemented such as using alternative low vibration construction techniques.	Archaeological Testing EMP Contractor's CEMP
HH10	An integrated archaeological project and research design will be developed in conjunction with heritage agency stakeholders. The research design will seek to investigate the project footprint and realise its archaeological potential. The archaeological project and research design will set out in detail the archaeological program, the research objectives and questions, and methods of analysis and dissemination of the results.	Archaeological Testing EMP
HH13	Prior to commencing works and during works, an archival record of the project footprint and the	A detailed archival recording has been completed.

	immediate vicinity will be undertaken in accordance with Heritage Council guidelines for items of State significance.	
HH14	The Heritage Branch (on behalf of the Heritage Council), the Hawkesbury Museum and Hawkesbury City Council will be consulted on the level of appropriate archival recording. At a minimum archival recording will be undertaken in accordance with the Heritage Council guidelines for recording items of State significance prior to any further works.	Detailed archival recording including 3D scanning has been undertaken in accordance with Heritage Council guidelines. The report has been reviewed by OEH. The final report will be supplied to HCC, Hawkesbury Museum and the local studies collection.
HH15	Archival recording prior to, during demolition and construction of the project and after completion of the project will be undertaken.	Detailed archival recording prior to works has been undertaken. Requirement for further recording is to be incorporated into the Contractor's CEMP.
HH16	A social record of Thompson Square and the building of the replacement bridge will be prepared to capture community views on the change to the environment.	RMS is undertaking this work.

Table 9: Maritime Archaeology.

Number	Management Measures	Compliance
MH1	An above and below water maritime archaeological salvage excavation will be undertaken within the area considered to have a high potential to contain archaeological remains associated with the c.1814 wharf where impacts from the project are anticipated. This includes the area immediately behind the southern bank of the river within footprint of the project. The salvage excavation will be conducted by a qualified maritime archaeologist in accordance with an appropriate research design. The research design would include, as a minimum, an excavation methodology, research questions and provisions for artefact analysis.	AAJV WBR Historic and Maritime Research Design Maritime Archaeological Testing Report Maritime Detailed Salvage Strategy
MH2	An archaeological excavation report will be prepared at the conclusion of the salvage excavation, and submitted to the Office of Environment and Heritage for their records.	An Archaeological Salvage Excavation Report will be prepared as per Condition of Approval C5.
MH3	The results of the excavation and artefact analysis will be used in on-site interpretation of the maritime history and heritage of the Windsor area.	The results of the maritime archaeological salvage will be incorporated into the

		Interpretation Plan as per Condition of Approval B1.
MH4	Archaeological monitoring by a qualified archaeologist will be undertaken in conjunction with earthworks and landscaping on the northern side of the existing bridge in the general location of the c.1835 punt landing. Any archaeological remains or relics associated with the punt crossing will be recorded and/or salvaged.	<p>Archaeological testing reports – no archaeological monitoring on the northern side is proposed.</p> <p>Detailed salvage strategy – archaeology related to the punt master's house was potentially located on the southern side of the river and the area has been recommended for salvage if impacted.</p>
MH5	An archaeological excavation report will be prepared at the conclusion of the salvage excavation, and submitted to the Office of Environment and Heritage for their records.	An Archaeological Salvage Report will be prepared within 12 months of the completion of salvage works as per Condition of Approval C5.

Table 10: Aboriginal Heritage.

Number	Management Measures	Compliance
AH1	<p>A salvage excavation plan will be developed in consultation with NSW Office of Environment and Heritage which would include the following considerations:</p> <ul style="list-style-type: none"> In the upper portion of W-SP 45-5-3581, at the corner of George and Bridge Streets, the entire extent of the archaeologically significant deposit will be salvaged via open excavation. The area of excavation would be about 100 square metres or as otherwise agreed with OEH during detailed design. In the lower portion of W-SP 45-5-3581, in the area between Bridge Street, Old Bridge Street and the wharf carpark, a representative sample of archaeological material will be taken to further investigate the relationship between the identified stone artefacts and shell lenses. The area of excavation would be about 25–50 square metres or as otherwise agreed with OEH during detailed design. Field and analysis methods for the salvage excavations will be consistent with the 	<p>AAJV WBR Aboriginal Archaeological Research Design and Excavation Methodology</p> <p>Detailed Salvage Strategy as per Condition of Approval B3</p>

	<p>Department of Planning and Infrastructure approved methodology set out in Volume 2 - working paper 3 and Department of Planning and Infrastructure will be consulted during the salvage process.</p> <ul style="list-style-type: none"> A suitably qualified and experienced archaeologist will be appointed to oversee the salvage activities. 	
AH2	<ul style="list-style-type: none"> Aboriginal objects recovered during salvage activities would be transferred to the Australian Museum in accordance with legislative requirements, Australian Museum Archaeological Collection Deposition Policy v1.0 January 2012. In the event the Australian Museum is unable to accept the objects, the objects will be transferred in accordance with a Care Agreement or similar agreement to an Aboriginal community. In the event that neither the Australian Museum nor the Aboriginal community are able to accept the archaeological objects, the suitably qualified and experienced archaeologist appointed to oversee the salvage activities would seek a Care Agreement or similar agreement to curate the objects. 	<p>AAJV WBR Aboriginal Archaeological Research Design and Excavation Methodology</p> <p>Detailed Salvage Strategy as per Condition of Approval B3</p>
AH3	<p>A written archaeological excavation report will be provided to Roads and Maritime within a reasonable time following the completion of the archaeological program.</p>	<p>An Archaeological Salvage Report will be prepared within 12 months of the completion of salvage works as per Condition of Approval C5.</p>
AH4	<p>In the areas where archaeological salvage is proposed, no construction or demolition activities (including preliminary and preparatory activities such as fencing, investigative drilling, minor clearing, establishing site compounds and adjustment of services and utilities) will occur until the salvage activities have been completed in that area.</p>	<p>AAJV WBR Aboriginal Archaeological Research Design and Excavation Methodology</p> <p>Detailed Salvage Strategy</p> <p>Contractor's CEMP</p>
AH5	<p>Prior to the commencement of preliminary and preparatory construction or demolition activities, a construction heritage site map identifying the known Aboriginal heritage sites and the areas to undergo salvage excavation will be prepared.</p>	<p>AAJV WBR Aboriginal Archaeological Research Design and Excavation Methodology</p> <p>Archaeological Testing EMP</p> <p>Sensitive Area Plans</p>

AH6	Registered Aboriginal stakeholders will be provided with the opportunity to assist with the salvage excavation.	AAJV WBR Aboriginal Archaeological Research Design and Excavation Methodology Archaeological Testing EMP
AH7	Incident reporting procedures for the project will cover incidents involving Aboriginal heritage.	AAJV WBR Aboriginal Archaeological Research Design and Excavation Methodology Archaeological Testing EMP AAJV Heritage Induction
AH8	Project environmental management plans will identify procedures for handling human remains, including an immediate stop to work in the vicinity of the find, and reporting to appropriate authorities.	Archaeological Testing EMP

Table 11: Visual Impact, Urban Design and Landscaping.

Number	Management Measures	Compliance
V8	Temporary construction facilities and compound areas will be returned to their pre-construction state or better, either at the completion of the construction phase or progressively throughout the construction period where possible and practicable.	Archaeological Testing EMP
V9	Pollution and dust will be kept to a minimum through the application of pollution management measures and monitoring.	Archaeological Testing EMP
V12	Temporary lighting will be screened or diverted to reduce unnecessary light spill.	Archaeological Testing EMP

Table 12: Noise and Vibration.

Number	Management measures	Compliance
NV1	Where heavy plant is used within seven metres of a heritage structure, attended vibration monitoring will be undertaken to assess compliance with project specific vibration criteria.	Contractor's CEMP
	Where an exceedance of project specific vibration criteria for structural damage is recorded during monitoring, work will cease immediately and alternative construction methods will be used.	Contractor's CEMP

4 Application of SCMP Policies

This section will review the policies set out in the SCMP as they apply to the WBRP project.

Table 13: Articulating a long-term vision for Thompson Square and the study area.

Number	Policy	Windsor Bridge Replacement Compliance
1	This SCMP should be acknowledged as a document recommending planning principles and the guiding framework for the future management of the heritage values of the area.	<p>SCMP to be approved by Director-General.</p> <p>The SCMP has been prepared in consultation with the Heritage Division of OEH and in accordance with the relevant guidelines of the NSW Heritage Council.</p> <p>Targeted consultation was undertaken with OEH, HCC, the National Trust of Australia (NSW) and other interested organisations at the Final Draft stage.</p> <p>The Final Draft SCMP was made available for public comment.</p> <p>The Final SCMP has been amended in line with comments received, as appropriate.</p>

Table 14: Built Heritage.

Number	Policy	Compliance
3	Review and, where appropriate, establish a future management approach to the identified 'opportunity sites' adjacent to Thompson Square.	<p>Not applicable.</p> <p>Outside the scope of the WBRP.</p>
4	Progressively remove unsympathetic accretions to individual buildings and the public domain, and reinstate buildings to their original façade configurations where these are viewed from the public domain.	<p>Not applicable.</p> <p>Outside the scope of the WBRP.</p>
5	Encourage the replacement of unsympathetic buildings in identified opportunity sites with high-quality, appropriately scaled and designed buildings.	<p>Not applicable.</p> <p>Outside the scope of the WBRP.</p>

Table 15: Management of Historic Fabric.

Number	Policy	Compliance
6	Extant building fabric from all significant periods of construction that contribute to the overall significance of Thompson Square should be retained and conserved.	Outside the scope of the WBRP. WBRP will have no direct physical impact on adjacent historic fabric.
7	Ongoing preservation and maintenance of original and significant fabric must be carried out using appropriate methods.	Not applicable. Outside the scope of the WBRP.
8	New extensions, fixtures and fittings are to be designed to be sympathetic with the existing fabric and to minimise loss of significant fabric.	Not applicable. Outside the scope of the WBRP.

Table 16: Future Infrastructure.

Number	Policy	Compliance
9	New or upgraded infrastructure should be sited to minimise or avoid heritage impacts. This should be done with reference to the policies outlined in this document.	This has included lowering the bridge by 1 metre to reduce visual impact and changing the piling alignment to reduce the footprint of the bridge which has reduced heritage impacts to the sand body. The location of some new and relocated utilities has been moved to an existing road cutting to reduce heritage impact. RMS has been guided by the SCMP during the detailed design of the WBRP in terms of the siting of project infrastructure.
10	Wherever possible, new utility infrastructure should be located underground, in areas that are not identified as archaeologically sensitive, ideally in existing service trenches.	WBRP underground infrastructure has, wherever technically possible, been located in areas that are not archaeologically sensitive, including the existing road cutting which is to be filled in and relandscaped at the completion of the WBRP.
11	For existing above-ground infrastructure (particularly utility lines), efforts should be made to place such infrastructure underground in the longer term.	Low-voltage electrical lines to be relocated underground in some areas. The electrical network distribution authority (Endeavour Energy) was consulted regarding the relocation of 33kV high-voltage electrical lines, but does not want to relocate (including underground) those lines at this time.

		RMS has made provisions for future underground utilities.
12	Where new infrastructure is connecting into heritage buildings, connections should be done below ground level, and, wherever possible, should reuse existing penetrations into the building.	Outside the scope of the WBRP. No connections into existing heritage buildings.

Table 17: Maintenance.

Number	Policy	Compliance
13	Existing maintenance plans for Thompson Square and the adjacent areas of the public domain should be reviewed and updated in line with the policies outlined in the SCMP.	A Maintenance Plan for the new Windsor Bridge (including abutments) will be prepared as a part of its commissioning. Maintenance of other public domain elements is outside the scope of the WBRP. RMS has consulted with HCC regarding the maintenance of structures in the public domain being handed over to the council following delivery of the WBRP.
14	Regular inspections are to be carried out by qualified contractors as required.	To be noted in the Windsor Bridge Maintenance Plan as required. HCC is responsible for the maintenance of Thompson Square and the public domain. The council has been consulted regarding maintenance of Thompson Square and the associated public domain following the completion of the work under the WBRP.
15	Any replacement work on significant fabric or elements should only be carried out as a last option and should be based on existing or historical evidence rather than conjecture.	Not applicable. Outside the scope of the WBRP.
16	Maintenance works should be assessed for their suitability as exempt works, not requiring consent under the <i>Heritage Act 1977</i> .	To be noted in the Windsor Bridge Maintenance Plan as required. A Schedule of Exemptions under s57(2) of the Heritage Act should be prepared and gazetted prior to commissioning of the new bridge.
17	Relevant authority to implement the maintenance programme across Thompson Square and surrounds.	Maintenance of Thompson Square and the surrounding open space is the responsibility of HCC as is the funding of the

		<p>maintenance of those areas. The council has been consulted on the design of Thompson Square and is aware of the maintenance requirements. Maintenance of private buildings and land is the responsibility of the landowners. RMS is responsible for the Windsor Bridge.</p> <p>RMS will implement the required Landscape, Urban Design and Interpretation Works as a part of the WBRP. Maintenance of the new bridge will remain with RMS. Maintenance of other elements will be the responsibility of HCC and/or private landowners as relevant.</p>
--	--	--

Table 18: Aboriginal Cultural Heritage.

Number	Policy	Compliance
18	The Aboriginal community is recognised as the primary guardians and caretakers of Aboriginal cultural heritage values embodied in the Windsor area and the Hawkesbury River; they will be fully consulted in relation to all activities within Thompson Square and the adjacent public domain.	Aboriginal community consultation has been ongoing throughout the project. Aboriginal community representatives will be given the opportunity to have input into and comment on further activities, including the SCMP, archaeological salvage and interpretation proposals.
19	Any interpretation works should include Aboriginal heritage, subject to consultation with the Aboriginal community.	Aboriginal community representatives have been given the opportunity to have input into and comment on interpretation proposals.

Table 19: Landscape and Environs – General.

Number	Policy	Compliance
20	The informal, asymmetrical character of the site should be maintained as a reflection of its historic evolution. Symmetry and overly formal layout should be avoided with any redesign or introduction of new elements. The topography should remain undulating and formal terracing should be avoided.	Allowed for in the UDLP. Symmetry and terracing have been avoided in the UDLP for Thompson Square. For greater detail, see the UDLP.
21	No new landscape elements should be introduced that would visually overwhelm or	The UDLP largely keeps the open character of Thompson Square.

	detract from the open character of the precinct, or shield the place from view.	The visual impact of the approved bridge is, however, unavoidable.
22	The incursion of vegetation that could impact on the open and informal character of the precinct and the views to and from it should be avoided.	The UDLP adopts a low-scale approach to vegetation at the edges of the precinct.
23	No new landscape elements such as additional boat servicing infrastructure, viewing platforms or public amenities should be introduced for which there is no historical precedent or interpretative relevance.	New hard landscaping within Thompson Square is limited to stairs adjacent to the abutment on the east and a retaining wall on the west. These are necessary to provide DDA-compliant access through Thompson Square.
24	Vegetation within the Thompson Square precinct should be managed in recognition of Thompson Square's early colonial history as informal parkland with an open character and with a limited planting palette which avoids ornamental, mass-planted garden beds.	The UDLP does not allow for formal garden areas and predominantly keeps the open space character of Thompson Square.
25	Selected inappropriate and self-sown trees should be removed (<i>Melia azedarach</i> , <i>Jacaranda</i> , <i>Ulmus parvifolia</i> , <i>Olea europaea</i> and <i>Schinus areira</i>) and replacement trees should be confined to species used in the earliest colonial plantings (<i>Brachychiton populneus</i> , <i>Araucaria cunninghamii</i> and <i>Grevillea robusta</i>) or other (especially native dry rainforest) species that were popular at the time of the earliest colonial tree plantings. Species from remnant native vegetation communities would also be acceptable.	Allowed for in the UDLP.
26	Degraded, weed-infested areas on the perimeter of the precinct (particularly along the riverbanks) should be restored. Weed species should be removed and a weed control programme implemented that is focused on invasive or environmental weed species. Remnant native riparian vegetation and species such as <i>Casuarina glauca</i> and <i>Casuarina cunninghamiana</i> should be used for riverbank stabilisation. Vegetation along the riverbank should be either low in scale or kept in isolated clumps in order to retain views to and from the square.	Allowed for in the UDLP.
27	Finishes of new introduced elements, such as bright metal finishes, are not preferred as they are inconsistent with the original character of the place. Modern materials and finishes should be recessive and complementary to existing historic fabric.	The UDLP recommends brushed finishes for bare metalwork.

28	All fences should be maintained in a style and condition consistent with the arrised timber post and rail fences, painted white, as shown in early photographs of Thompson Square – unless changes are required to meet identified public safety needs or in areas where no fences existed previously, and where the fence does not impinge upon the visual curtilage of the square.	No fencing is to be proposed within Thompson Square as part of the WBRP.
29	Existing road surfaces and paths should be reviewed with the aim of eliminating all harsh modern surface finishes within and adjacent to Thompson Square. Any replacement road surfaces and paths should relate more closely to the traditional gravel and honey-coloured crushed, coarse, aggregate-rich bitumen surfaces (such as using aggregate derived from Nepean River gravel or similar).	<p>The urban design for Thompson Square and surrounds has addressed this requirement by the following measures:</p> <ol style="list-style-type: none"> 1. The number of pathways through the open space has been limited to that necessary to provide safe access. 2. Sandstone paving has been introduced into the stairs through Thompson Square. 3. A section of The Terrace which will be a shared pedestrian and vehicle zone will have an exposed aggregate concrete surface that uses honey-coloured aggregate. 4. RMS has advised that as Bridge St and George St are main roads, they are required to be standard black asphalt, and this recommendation is not technically achievable in those locations.
30	Concrete kerbs and gutters should be considered for replacement with sandstone kerb and gutter except where they have a vital function in preventing erosion and managing storm water.	<p>Allowed for in the UDLP.</p> <p>WBRP kerbs and gutters are concrete.</p> <p>Kerbs and gutters used for the WBRP all have a vital function in managing stormwater flow.</p>
31	Construction of retaining walls should be avoided where possible. However, should they be necessary, single taller walls are preferred to avoid evoking a suburban character of multiple walls or terracing.	<p>A single retaining wall is required to the north-east of the new Windsor Bridge, to provide for a bus turning bay near the wharf (required under Condition of Approval B8). This is outside Thompson Square.</p> <p>A single retaining wall was recommended by the landscape heritage consultants over multiple terraced retaining walls during the Detailed Design process.</p>

32	Any earthworks required to implement the landscape concept proposals should be minimal and respectful of the informal nature of the existing terrain and designed to protect identified in-situ archaeological material. Where opportunities exist to interpret the archaeological evidence and where it is compatible with the historic character of the precinct, the designers should consult with the archaeological and interpretive consultants to integrate interpretation into the landscape or built landscape elements. In general, no new landscape elements should be introduced for which there is no historical precedent or interpretative relevance.	Reshaping of the landform is minimised as much as possible, within the practical constraints of access and maintainability. No in-situ archaeological remains have been identified within Thompson Square that are substantial enough to warrant in-situ interpretation. The archaeological heritage of the precinct is incorporated within the Interpretation Plan. The southern abutment of the existing bridge is to be retained and incorporated as a viewing platform.
-----------	--	---

Table 20: Public Domain Environment

Number	Policy	Compliance
33	Traditional materials, including sandstone and painted timber, should be used for public domain elements, in preference to modern materials such as concrete and polished or painted metal.	Sandstone is proposed for the steps along the sides of Thompson Square.
34	Where modern materials must be used for reasons of safety, security or operational effectiveness, these materials should be of a high quality, well designed and act to complement the heritage values of the place.	See the UDLP.
35	'Mock heritage' public domain elements (such as faux gas lights) should not be used.	No such elements are allowed for in the UDLP.
36	Wherever possible, cluttered elements (such as modern signage, lighting and bubblers) should be removed and modern elements, where possible, should be consolidated into discrete areas, or offer shared functions, to limit new additions to the public domain.	See the UDLP.
37	If possible, the western edge of Thompson Square should be realigned to its earlier alignment.	Not applicable. Outside the scope of the WBRP.

Table 21: Commercial Activities within the Public Domain.

Number	Policy	Compliance
38	The scale and bulk of the outdoor dining facilities along George Street should be reduced, as these detract from the historic	Not applicable. Outside the scope of the WBRP.

	streetscape character and obscure the facades of the heritage items.	
39	Consistent guidelines and approaches for any new outdoor dining facilities within the study area should be established, with a high baseline of design that is sympathetic to the heritage values of the site.	Not applicable. Outside the scope of the WBRP.
40	Commercial activities within Thompson Square itself should be restricted to short-term activities (that is, weekends only) that require no permanent infrastructure.	Not applicable. Outside the scope of the WBRP.

Table 22: Aboriginal Archaeology.

Number	Policy	Compliance
41	An archaeological assessment or statement should be prepared where required for future works.	An Archaeological Research Design and Detailed Salvage Strategy for Aboriginal heritage has been developed for the next phase of the WBRP.
42	Any activities that require minimal ground disturbance to <20 centimetres (such as returfing, top-dressing and road resurfacing) can be undertaken without the need for further archaeological assessment or mitigation.	Not applicable. Outside the scope of the WBRP.
43	Any activities that require ground disturbance to >20 centimetres (such as watering systems and utilities) would require archaeological assessment and investigation by an Aboriginal heritage specialist. Where significant cultural deposits are identified, the activity should be redesigned to avoid impacts.	Impacts to Aboriginal archaeological heritage have been considered and mitigation measures have been developed within the Detailed Salvage Strategy.
44	Where impacts to Aboriginal archaeological heritage cannot be avoided, an Aboriginal Heritage Impact Permit will be required under section 90 of the <i>National Parks and Wildlife Act 1974</i> .	Not applicable. Outside the scope of the WBRP.
45	Any maintenance of existing subsurface infrastructure where impacts are constrained to existing trenches and/or areas of disturbance can be undertaken without further archaeological assessment or investigation.	Impacts to Aboriginal archaeological heritage have been considered and mitigation measures have been developed within the Detailed Salvage Strategy.
46	Any maintenance of existing subsurface infrastructure that requires impact to surrounding natural soil deposits, and which is greater than 20 centimetres, would require archaeological assessment and investigation	Not applicable. Outside the scope of the WBRP.

	by an Aboriginal heritage specialist. Where significant cultural deposits are identified, the activity should be redesigned to avoid impacts.	
47	For all activities proposed for areas of Aboriginal archaeological significance, indirect impacts should be managed, including compaction from heavy vehicles, vehicle slewing, equipment storage, site sheds and fencing. Where indirect impacts are considered likely, surface protection should be established before the activity is initiated.	To be addressed within the WBRP CEMP.
48	Given that the depth of the archaeological deposits within Thompson Square and The Terrace can exceed 1.5 metres below the existing ground surface, any future archaeological or heritage investigations should ensure that appropriate excavation methods are employed to assess the significance of deposits that would be impacted by development and to appropriately manage any such impacts.	Not applicable. Outside the scope of the WBRP.
49	Significant archaeological deposits found within Thompson Square and The Terrace should be registered on the OEH Aboriginal Heritage Information Management Systems to ensure future identification and management. Artefacts produced from any archaeological investigations should be managed and stored as determined through consultation with the local Aboriginal community.	To be undertaken for areas disturbed or investigated by the WBRP at the conclusion of archaeological salvage works.
50	Thompson Square should be assessed for potential listing as an Aboriginal Place under the <i>National Parks and Wildlife Act 1974</i> to ensure its future protection and management.	RMS would support such a listing following the completion of the WBRP.
51	Future interpretive opportunities should include Aboriginal heritage values associated with Thompson Square and The Terrace, such as early evidence of colonisation, survival through the Last Glacial Maximum, and nineteenth-century interactions between Aborigines and early European settlers.	Included within the WBRP Interpretation Plan.

Table 23: Historical Archaeology.

Number	Policy	Compliance
52	Any potential archaeological resources should be conserved in accordance with the requirements of the <i>Heritage Act 1977</i> and their potential for interpretation considered.	An Archaeological Research Design and Detailed Salvage Strategy for historical archaeological heritage has been

		developed for the next phase of the WBRP.
53	All archaeological work should only be carried out under the supervision of a suitably qualified and accredited archaeologist.	The Excavation Director for the Detailed Salvage Strategy was approved as suitably qualified and experienced by OEH and DPE in March 2016.
54	<p>Excavation works in areas identified as archaeologically sensitive should be managed in accordance with the relevant sensitivity zoning in this SCMP (see Figure 45, Volume 2) and the requirements of the <i>Heritage Act 1977</i>. The following guidelines should also be followed:</p> <ul style="list-style-type: none"> • Avoidance – wherever possible, works should avoid known archaeologically sensitive areas. If avoidance is not possible, the mitigation measures listed below should be considered. • Stop work protocol – works in these areas only require a ‘stop work’ protocol in the event of an unexpected discovery. • Monitor and record – works in these areas should be monitored for potential historical remains. Prior to commencement, the works will require a section 139 or section 57 approval under the <i>Heritage Act 1977</i>, depending on their location. • Conserve in-situ or salvage excavation – works in these areas are known or highly likely to contain intact and significant historical archaeological materials, including structural remains and deposits. Wherever possible, these areas should not be excavated. If there is no alternative, the area should be subject to full archaeological excavation. Prior to commencement, the works will require a section 139 or Section 57 approval under the <i>Heritage Act 1977</i>, depending on their location. • Artefacts generated through any historical archaeological work should be stored and managed by Hawkesbury City Council or the Windsor Museum. 	Contained in the Detailed Salvage Strategy.
55	Wherever possible, new works or infrastructure such as landscaping and the installation of new services should avoid identified areas of high archaeological sensitivity.	AAJV has worked with RMS and bridge designers to relocate such elements away from

		<p>archaeologically sensitive areas wherever technically feasible.</p> <p>Several new service lines will be relocated into the old road cutting.</p> <p>Archaeological deposits within Macquarie Street to the east of Bridge Street will be retained below the new road surface if possible.</p> <p>A large portion of the sand body will be retained below the upper portion of Thompson Square.</p> <p>Maritime archaeology outside the immediate impact zone of the bridge piers will be retained and capped below the scour protection works.</p> <p>The results of the archaeological salvage will be further reviewed to determine if additional archaeological materials can be retained in situ.</p>
56	Any maintenance of existing subsurface infrastructure where impacts are constrained to existing trenches and/or areas of disturbance can be undertaken without further archaeological assessment or investigation.	Within the context of the WBRP, existing services have been located. Where necessary, services will be decommissioned and/or relocated in accordance with the understanding of the archaeological sensitivity of the place.
57	For all activities proposed for these areas, indirect impacts should be managed, including compaction from heavy vehicles, vehicle slewing, equipment storage, site sheds and fencing. Where indirect impacts are considered likely, surface protection should be established before the activity is initiated.	To be addressed within the WBRP CEMP.
58	In the event that archaeological material is unexpectedly discovered during any works within Thompson Square and the adjacent public domain, work should immediately cease in the affected area and the Heritage Division of OEH be contacted for advice.	To be addressed within the WBRP CEMP.

Table 24: Maritime Archaeology.

Number	Policy	Compliance
--------	--------	------------

59	Areas of identified maritime archaeological sensitivity should ideally be avoided in terms of future excavation impacts or disturbance.	<p>A Detailed Salvage Strategy has been prepared for maritime archaeology.</p> <p>The relocation of bridge piers within the area of maritime sensitivity is not technically</p> <p>The scour protection methodology has been designed specifically to bury and protect undisturbed maritime heritage items in the project area.</p>
60	All archaeological excavation work should only be carried out under the supervision of a suitably qualified and accredited maritime archaeologist.	A WBRP Maritime Archaeology Excavation Director has been approved by DPE in consultation with OEH (March 2016).
61	Where impacts are unavoidable in the zone of maritime archaeological sensitivity (the area of the circa-1814 wharf), an assessment of those impacts should be undertaken and an excavation permit obtained under section 139 of the <i>Heritage Act 1977</i> . Maritime archaeological excavation will likely be required in that zone.	For the WBRP, a Detailed Salvage Strategy has been prepared for maritime archaeology.
62	Where deeper excavation (greater than 1500 millimetres) is proposed along the southern riverbank, including works to reclaim land, scour protection works or replacement of the existing gabion baskets, an excavation permit under section 139 of the <i>Heritage Act 1977</i> should be obtained for archaeological monitoring.	<p>For the WBRP, a Detailed Salvage Strategy has been prepared for maritime archaeology.</p> <p>The scour protection methodology has been designed specifically to bury and protect undisturbed maritime heritage items in the project area.</p>

Table 25: Interpretation.

Number	Policy	Compliance
63	An interpretation plan should be prepared as part of major future works that affect the public domain. Future interpretation should take a consistent approach to interpreting the site.	An Interpretation Plan has been prepared for the study area.
64	Interpretation programmes should be accessible to the public.	Physical and digital interpretation will be directly accessible by the public. See Interpretation Plan for further detail.
65	Interpretation programmes should encourage an appreciation of the significance of the site and long-term conservation for present and future generations.	The Interpretation Plan considers the site, its history and significance, its present use,

		potential audiences and practical limitations.
66	The Thompson Square Interpretation Strategy (AAJV 2016) should be adopted as the key guiding document for heritage interpretation in the area.	The Thompson Square Interpretation Strategy has been adopted by RMS for the WBRP.
67	Future interpretation should include elements from all aspects of the area's history, and should not shy away from telling the stories of conflict.	Allowed for within the WBRP Interpretation Strategy and Interpretation Plan.
68	Stakeholder groups should be involved in the development of detailed interpretation proposals.	Allowed for within the WBRP Interpretation Strategy and Interpretation Plan.
69	Future interpretive works should be robust and well-designed, and should not conflict with other uses of the precinct.	Allowed for within the WBRP Interpretation Strategy and Interpretation Plan.
70	Interpretive works should be regularly maintained for wear and tear, graffiti and other impacts over time.	To be included within a Public Domain Maintenance Plan. HCC will be responsible for the majority of this maintenance. RMS is responsible for the maintenance of interpretation on the bridge and this will be incorporated into the Bridge Maintenance Plan.
71	Interpretive works should be planned with the aim of refreshing every five to ten years. It is not necessary to interpret all aspects of the site's history at every opportunity.	Not applicable. Outside the scope of the WBRP.

Table 26: Vistas, Views and Setting

Number	Policy	Compliance
72	The vegetation in Thompson Square and the southern riverbank should be managed to open up views of Thompson Square and adjacent areas from the northern interpretive viewing area, at the eastern edge of Macquarie Park.	Allowed for within the UDLP. Recommendation for low clumps of plantings rather than high-growing continuous plantings along the riverbank.

Table 27: Archival.

Number	Policy	Compliance
73	Where new records are generated, copies should be lodged with, at a minimum, Hawkesbury City Council and the Windsor Museum.	The final report will be made available to the Director-General, the NSW Heritage Council, the Local Studies Library and the Local Historical Society in Windsor.
74	Major changes to Thompson Square, the surrounding area and adjacent heritage items should be archivally recorded in accordance with Heritage Council guidelines.	Ongoing archival recording to be undertaken during delivery of the WBRP.

Table 28: Statutory Approvals.

Number	Policy	Compliance
75	<p>The listing of Thompson Square on the SHR requires that approval for changes to the place be obtained from the:</p> <ul style="list-style-type: none"> Heritage Council of NSW and OEH and heritage (for places listed on the SHR, or unlisted historical and maritime archaeological sites and relics outside the SHR curtilage), as per the <i>Heritage Act 1977</i> OEH, for Aboriginal objects and places, including the Hawkesbury Sand Sheet, as per the <i>National Parks and Wildlife Act 1974</i> Hawkesbury City Council, for integrated development applications for items on the SHR, or development applications for items on the LEP, or unlisted items and areas within the study area, as per the <i>Environmental Planning and Assessment Act 1979</i> determining authorities undertaking infrastructure works as listed in (and as 	<p>Not applicable.</p> <p>Outside the scope of the WBRP.</p>

	per) the <i>State Environmental Planning Policy (Infrastructure) 2007</i> .	
--	---	--

Table 29: Improving the Understanding of the Study Area.

Number	Policy	Compliance
76	Rationalising of the SHR and LEP curtilages to the same boundary should be considered.	Not applicable. Outside the scope of the WBRP.
77	Expanding the boundaries of the Thompson Square Conservation Area north to incorporate the southern embankment and maritime heritage zone, and the opportunity sites identified along the boundaries of Thompson Square, to provide greater control of future development outcomes, should be considered. A Schedule of Exemptions to accommodate future routine maintenance work to infrastructure and public space within the Conservation Area should be developed.	Not applicable. Outside the scope of the WBRP. RMS should consider developing a Schedule of Exemptions for routine maintenance activities for the new bridge within the Conservation Area.
78	Copies of all heritage information should be lodged with the Windsor Museum, Hawkesbury City Council and other public archives as appropriate. Ideally this information should be made available online as well as in hard copy.	RMS will provide electronic copies of all heritage documents upon their completion and approval, including: <ul style="list-style-type: none"> • SCMP Volumes 1–3 • Aboriginal Archaeological Testing Report • Historical Archaeological Testing Report • Maritime Archaeological Testing Report • Hawkesbury Region Sand Bodies Study • Aboriginal Archaeological Salvage Report • Historical Archaeological Salvage Report • Maritime Archaeological Salvage Report • Detailed Archival Recording • Interpretation Strategy • Interpretation Plan.
79	Update the individual SHR and LEP listing cards for the individual sites within and adjacent to the study area, to reflect the updated historical information from the SCMP.	Not applicable. Outside the scope of the WBRP.

Table 30: Consultation.

Number	Policy	Compliance
80	Ongoing discussion with all stakeholders in relation to future action or development of Thompson Square should continue so as to ensure the retention of the cultural significance of the site.	Consultation with stakeholders is ongoing regarding the WBRP.

Table 31: Security.

Number	Policy	Compliance
81	Proposed works or actions designed to minimise risk within Thompson Square or the adjacent areas should be designed so as to not adversely impact on the character of the site.	Addressed within the UDLP.
82	Where proposed works have the potential to impact upon the heritage values of the place, the identified risk and proposed solution should be reviewed by a BCA, risk or disability access consultant with experience in working with heritage places, to determine whether an alternative solution can be found to address the risk and requirements.	Allowed for within the UDLP. Detailed design of specific urban design proposals may require further review.

5 List of heritage items, impacts and mitigation measures

The 'Mitigation' column indicates how the heritage design principles and policies presented in Volume 2 have been specifically implemented with respect to the various heritage items within the study area. The nature and extent of mitigation is directly related to the specific heritage impacts to each item, as summarised in the 'WBRP Impact' column.

Table 32 Mitigation measures for specific heritage items identified in the Minister's Conditions of Approval.

Item #	Site Name	WBRP Impact	Mitigation
H11	Thompson Square	Establishment of new bridge at higher level along eastern edge	<p>New bridge lowered as much as technically feasible</p> <p>Filling in of earlier road cut and connection of upper and lower parkland areas</p> <p>Western abutment to be treated with interpretive masonry</p> <p>Archaeological salvage programme</p> <p>Interpretation programme</p> <p>The provision of a shallow (180mm thick) pavement along George Street, the intersection of George Street and Bridge Street and along Bridge Street for approximately 20m south of the intersection. This resulted in reduced excavation required for the proposed pavement thus minimising the risk of finding unexpected heritage items such as the Telford pavements.</p> <p>The relocation of new and replacement underground utility services (water main, telecommunications, and electrical) on the southern side of the Hawkesbury River to be aligned with the existing Bridge Street (to be filled). This resulted in minimum excavation required to lay these new services thus minimising the risk of finding unexpected heritage items.</p> <p>The reduction of the proposed drainage system along The Terrace. This resulted in no additional deep excavation required to lay drainage pipes thus</p>

Item #	Site Name	WBRP Impact	Mitigation
			minimising the risk of finding unexpected heritage items.
HI2	Thompson Square – upper parkland area	New southern bridge approach will cut into south-western edge of upper parkland	As above
HI3	Thompson Square – lower parkland area	New southern bridge abutment will substantially cut into lower parkland	Extensive archaeological salvage (Aboriginal and historic)
HI4	<i>Doctors House</i> 1–3 Thompson Square	No direct physical impact Moderate visual impact Loss of sense of connection to eastern side of Thompson Square	New bridge lowered as much as technically feasible Western abutment to be treated with interpretive masonry Façade archivally recorded (photos, scale drawings and 3D scan) CEMP measures for construction impacts (e.g. vibration)
HI5	<i>House & Outbuilding</i> 5 Thompson Square	No direct physical impact Moderate visual impact Loss of sense of connection to eastern side of Thompson Square	New bridge lowered as much as technically feasible Western abutment to be treated with interpretive masonry Façade archivally recorded (photos, scale drawings and 3D scan) CEMP measures for construction impacts (e.g. vibration)
HI6	<i>Hawkesbury Museum and Tourist Information Centre</i> 7 Thompson Square	No direct physical impact Moderate visual impact Loss of sense of connection to eastern side of Thompson Square	New bridge lowered as much as technically feasible Western abutment to be treated with interpretive masonry Façade archivally recorded (photos, scale drawings and 3D scan) CEMP measures for construction impacts (e.g. vibration)
HI7	<i>Macquarie Arms Hotel</i> 81 George Street	No direct physical impact Moderate visual impact Some loss of sense of connection to eastern side of Thompson Square	New bridge lowered as much as technically feasible Western abutment to be treated with interpretive masonry

Item #	Site Name	WBRP Impact	Mitigation
			<p>Façade archivally recorded (photos, scale drawings and 3D scan)</p> <p>CEMP measures for construction impacts (e.g. vibration)</p>
HI8	<i>House</i> 4 Bridge Street (also identified as 8 Bridge Street)	<p>No direct physical impact</p> <p>Substantial visual impact</p> <p>Loss of sense of connection to western side of Thompson Square</p>	<p>New bridge lowered as much as technically feasible</p> <p>Façade archivally recorded (photos, scale drawings and 3D scan)</p> <p>CEMP measures for construction impacts (e.g. vibration)</p>
HI9	<i>House</i> 6 Bridge Street	<p>No direct physical impact</p> <p>Substantial visual impact</p> <p>Loss of sense of connection to western side of Thompson Square</p>	<p>New bridge lowered as much as technically feasible</p> <p>Façade archivally recorded (photos, scale drawings and 3D scan)</p> <p>CEMP measures for construction impacts (e.g. vibration)</p>
HI10	<i>'Lilburn Dale Hall' House and Outbuildings</i> 10 Bridge Street	<p>No direct physical impact</p> <p>Moderate visual impact</p> <p>Some loss of sense of connection to western side of Thompson Square</p>	<p>New bridge lowered as much as technically feasible</p> <p>Façade archivally recorded (photos, scale drawings and 3D scan)</p> <p>CEMP measures for construction impacts (e.g. vibration)</p>
HI11	<i>School of Arts</i> 14 Bridge Street	<p>No direct physical impact</p> <p>Moderate visual impact</p>	<p>New bridge lowered as much as technically feasible</p> <p>Façade archivally recorded (photos, scale drawings and 3D scan)</p> <p>CEMP measures for construction impacts (e.g. vibration)</p>
HI12	<i>Cottage</i> 20 Bridge Street	<p>No direct physical impact</p> <p>Limited visual impact</p>	<p>New bridge lowered as much as technically feasible</p> <p>Façade archivally recorded (photos, scale drawings and 3D scan)</p> <p>CEMP measures for construction impacts (e.g. vibration)</p>
HI13	<i>Cottage</i> 17 Bridge Street	<p>No direct physical impact</p> <p>Limited visual impact</p>	<p>New bridge lowered as much as technically feasible</p> <p>Façade archivally recorded (photos, scale drawings and 3D scan)</p> <p>CEMP measures for construction impacts (e.g. vibration)</p>

Item #	Site Name	WBRP Impact	Mitigation
HI14	<i>Shops – Former Hawkesbury Stores (64–68 George St)</i> 62–68 George Street	No direct physical impact Moderate visual impact	New bridge lowered as much as technically feasible Façade archivally recorded (photos, scale drawings and 3D scan) CEMP measures for construction impacts (e.g. vibration)
	<i>Shop</i>	No direct physical impact Moderate visual impact	New bridge lowered as much as technically feasible Façade archivally recorded (photos, scale drawings and 3D scan) CEMP measures for construction impacts (e.g. vibration)
HI15	<i>Shops - Former Hawkesbury Garage</i> 70–72 George Street	No direct physical impact Moderate visual impact	New bridge lowered as much as technically feasible Façade archivally recorded (photos, scale drawings and 3D scan) CEMP measures for construction impacts (e.g. vibration)
HI16	<i>A.C. Stearn Building</i> 74 George Street	No direct physical impact Moderate visual impact	New bridge lowered as much as technically feasible Façade archivally recorded (photos, scale drawings and 3D scan) CEMP measures for construction impacts (e.g. vibration)
HI17	<i>Shop</i> 80–82 George Street	No direct physical impact Limited visual impact	New bridge lowered as much as technically feasible Façade archivally recorded (photos, scale drawings and 3D scan) CEMP measures for construction impacts (e.g. vibration)
	<i>Shop</i>	No direct physical impact Limited visual impact	New bridge lowered as much as technically feasible Façade archivally recorded (photos, scale drawings and 3D scan) CEMP measures for construction impacts (e.g. vibration)
HI18	<i>Shops</i> 84–88 George Street	No direct physical impact Limited visual impact	New bridge lowered as much as technically feasible Façade archivally recorded (photos, scale drawings and 3D scan)

Item #	Site Name	WBRP Impact	Mitigation
			CEMP measures for construction impacts (e.g. vibration)
HI19	<i>Two-storey building and shed</i> 92–98 George Street	No direct physical impact Limited visual impact	New bridge lowered as much as technically feasible Façade archivally recorded (photos, scale drawings and 3D scan) CEMP measures for construction impacts (e.g. vibration)
HI20	Windsor Bridge	Demolished	<p>Section of southern abutment kept as a viewing platform</p> <p>Interpretation of the bridge</p> <p>Archivally recorded (photos, scale drawings and 3D scan)</p> <p>The proposed scour protection on the southern bank has been designed to avoid excavation. The rock will be directly placed onto of geofabric and will capsule the maritime heritage and protect it for future generations. The scour protection can also be removed if required to access the maritime heritage.</p> <p>Should Hawkesbury City Council accept the asset and its maintenance, the first span of the existing bridge and the southern bridge abutment on the southern side of the river is to be preserved for interpretation purposes. The northern abutment is also to be preserved for the purposes of interpretation.</p> <p>Cladding on the southern abutment has been redesigned to include heritage interpretation.</p> <p>The foundation design for the southern abutment has been changed from an L-Shape foundation design to a piling foundation design to minimise excavation and impact on the sand body in Thompson Square.</p>

Item #	Site Name	WBRP Impact	Mitigation
HI21	<i>Bridgeview Residence</i> 27 Wilberforce Road	No direct physical impact Substantial visual impact	New bridge lowered as much as technically feasible Façade archivally recorded (photos, scale drawings and 3D scan) CEMP measures for construction impacts (e.g. vibration)
HI22	<i>Green Hills Cottage</i> 41 George Street	No direct physical impact Limited visual impact	New bridge lowered as much as technically feasible CEMP measures for construction impacts (e.g. vibration)

6 Summary and Conclusion

The process of the development of the SCMP for Thompson Square and surrounds has been an iterative process informed by the investigation and research into the area's history, the archaeological investigation programme and the detailed design of the replacement Windsor Bridge and supporting Urban Design and Landscape Plan. The heritage project team for the SCMP has been involved in the discussions underpinning all of these elements throughout their development. In summary, the heritage work of this project is supported by the following suite of documents:

- Strategic Conservation Management Plan for Thompson Square and Surrounds – Executive summary and 4 volumes (AAJV 2017)
- Aboriginal Archaeological Research Design (AAJV 2016)
- Historical and Maritime Archaeological Research Design (AAJV 2016)
- Archaeological Testing Environmental Management Plan (AAJV 2016)
- Aboriginal Archaeological Testing Report (AAJV 2017)
- Hawkesbury River Sand Bodies Study (AAJV 2017)
- Historical Archaeological Testing Report (AAJV 2017)
- Maritime Archaeological Testing Report (Cosmos Archaeology 2017)
- Interpretation Strategy (AAJV 2017)
- Interpretation Plan (AAJV 2016)
- Detailed Archival Recording (AAJV 2016)
- Precinct 3D Scanning (Jacobs 2016)
- Urban Design and Landscape Plan (Spackman Mossop and Michaels 2016).

In many areas, these documents are interwoven, and recommendations from one are interconnected and support or form components of recommendations in others. The SCMP has sought to provide overarching direction on the conservation of the significant heritage values of the Thompson Square precinct, at the level of the WBRP, but also in a long-term strategic fashion for the area. The documents are, however, all fundamentally constrained by the approved WBRP and have all been developed within that context.

The approved replacement Windsor Bridge will have a significant, unavoidable heritage impact on Thompson Square, introducing a large, modern element into this historic place. Full mitigation of these impacts is not possible due to the nature of the approved project; yet, where technically feasible, efforts have been made to reduce or offset those impacts. The new bridge will, however, create lasting change to this place, just as the construction of the original bridge did in the late nineteenth century.

Many of the recommendations within the SCMP transcend the current project, and will require the collective effort and cooperation of local authorities and individuals to achieve a coherent conservation vision for the precinct. Thompson Square has undergone almost constant change and alteration since the establishment of the original Windsor Bridge in the late nineteenth century, but has continued to be a focus for the local community. The implementation of the SCMP policies will help mitigate, but not remove, the heritage impacts of the WBRP, but will also provide a solid framework for the future managers of the area to act in a strategic fashion to continue to improve the conservation, interpretation and celebration of this important historic precinct into the future.