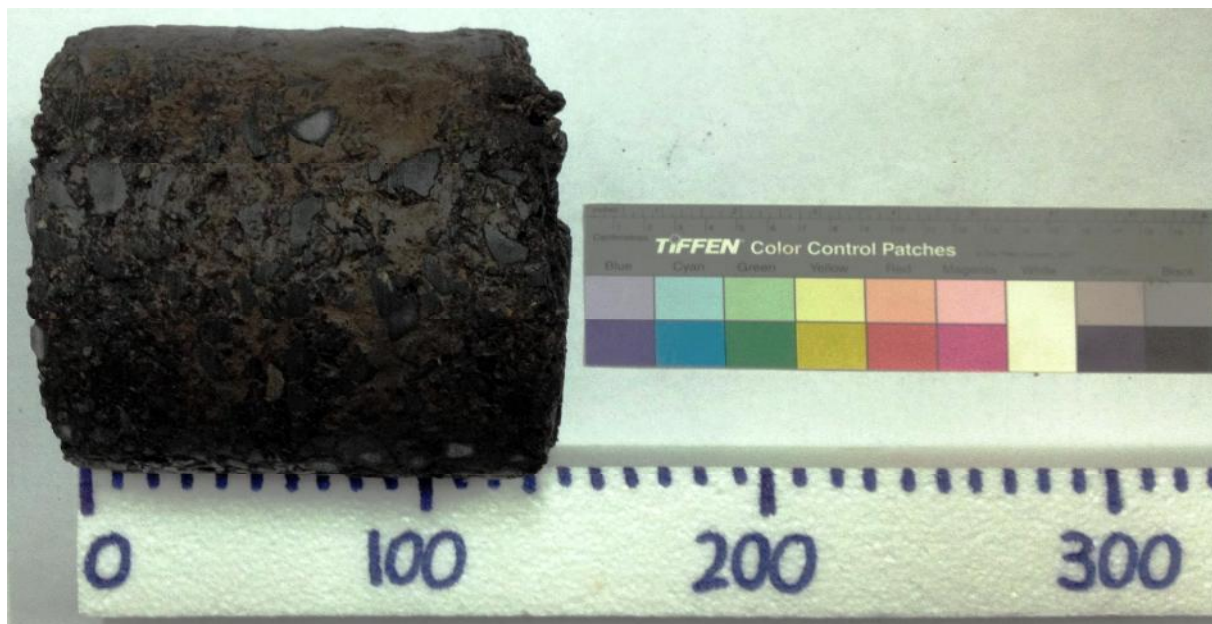



## **Appendix 1: Pavement Core Sample Report**

Contractor: Terratest Pty. Ltd. (Tim Tucker)		Core Method: Wet	Position: Bridge Street - NB lane
Date: 18.02.2013		Core Diameter: 150 mm	Location: Southern Approach
Equipment: Diatube		Logged By: DA	Checked By: SRR
Depth (mm)		Description	
From	To		
0	130	Asphaltic Concrete: Aggregate up to 20mm, poor condition, occasional small to medium void	
130		Pavement core terminated at 130mm, continued as borehole	
130	600	Road-base: Gravel, grey-brown, fine to coarse sub-angular to sub-rounded, some fine to medium grained sand, trace silt, moist, fill.	
600	2000	Sub-grade: Silty Clay, red-brown, medium plasticity, some fine grained sand, moist, very stiff	
2000		Borehole terminated at 2000mm, target depth	

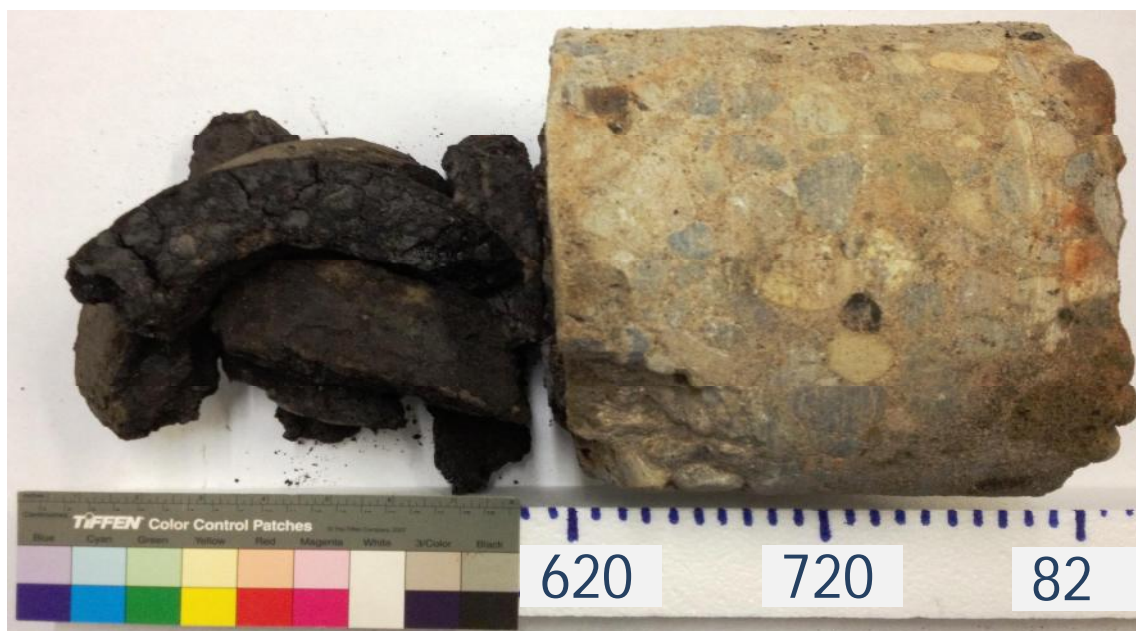
Photo:




	Client: Roads and Maritime Services	
	Project: Windsor Bridge Replacement Detail Design	
	Title: Pavement Core Log Report	
	Project No NB98005	Location ID: PC01

Contractor: Terratest Pty. Ltd. (Tim Tucker)		Core Method: Wet	Position: Bridge St - Roundabout
Date: 18.02.2013		Core Diameter: 225 mm	Location: Southern Approach
Equipment: Diatube		Logged By: DA	Checked By: SRR
Depth (mm)		Description	
From	To		
0	80	Concrete/brick pavers	
80	200	Bedding: Gravelly Sand, yellow-brown, fine to medium grained sand, fine to medium sub-angular gravel, dry, fill, loose	
200	620	Asphaltic Concrete: Aggregate 5 - 10mm, poor condition, small voids, asphalt deteriorated on coring	
620	800	Lean Mix Concrete, aggregate up to 40mm	
800		<b>Pavement core terminated at 800mm, continued as borehole</b>	
800	2000	Sub-grade: Silty Clay, red-brown, medium plasticity, some fine grained sand, moist, very stiff	
2000		<b>Borehole terminated at 2000mm, target depth</b>	

Photo:




 Geotechnics	Client:	Roads and Maritime Services	
	Project:	Windsor Bridge Replacement Detail Design	
	Title:	Pavement Core Log Report	
	Project No	NB98005	Location ID: PC02

Contractor: Terratest Pty. Ltd. (Tim Tucker)		Core Method: Wet	Position: George Street - WB lane
Date: 18.02.2013		Core Diameter: 150 mm	Location: Southern Approach
Equipment: Diatube		Logged By: DA	Checked By: SRR
Depth (mm)		Description	
From	To		
0	10	Asphaltic Concrete: Aggregate 5 - 10mm, fair condition, few small voids	
10	35	Asphaltic Concrete: Aggregate 5 - 15mm, poor condition, small to medium voids	
35		<b>Pavement core terminated at 35mm, continued as borehole</b>	
35	150	Road-base: Gravel, grey/brown, fine to coarse sub-angular to sub-rounded, some fine to medium grained sand, dry to moist, fill.	
150	300	Sub-grade/fill: Sandy Silt, dark brown, low plasticity, fine grained sand, trace clay, trace fine sub-angular gravel, dry to moist, fill	
300	1500	Sub-grade: Silty Clay, red-brown, medium plasticity, some fine grained sand, moist, very stiff.	
1500		<b>Borehole terminated at 1500mm, target depth</b>	

Photo:




 Geotechnics	Client: Roads and Maritime Services	
	Project: Windsor Bridge Replacement Detail Design	
	Title: Pavement Core Log Report	
	Project No NB98005	Location ID: PC03

Contractor: Terratest Pty. Ltd. (Tim Tucker)		Core Method: Wet	Position: George Street - EB lane
Date: 18.02.2013		Core Diameter: 150 mm	Location: Southern Approach
Equipment: Diatube		Logged By: DA	Checked By: SRR
Depth (mm)		Description	
From	To		
0	60	Asphaltic Concrete: Aggregate 5 - 10mm, fair condition	
60	120	Asphaltic Concrete: Aggregate up to 35mm, fair condition, few small voids	
120	310	Concrete, aggregate up to 40mm	
310		<b>Pavement core terminated at 310mm, continued as borehole</b>	
310	400	Sub-grade/fill: Sandy Silt, dark brown, low plasticity, fine grained sand, trace clay, dry to moist, fill	
400	2000	Sub-grade: Silty Clay, red-brown, medium plasticity, some fine grained sand, moist, very stiff	
2000		<b>Borehole terminated at 2000mm, target depth</b>	

Photo:

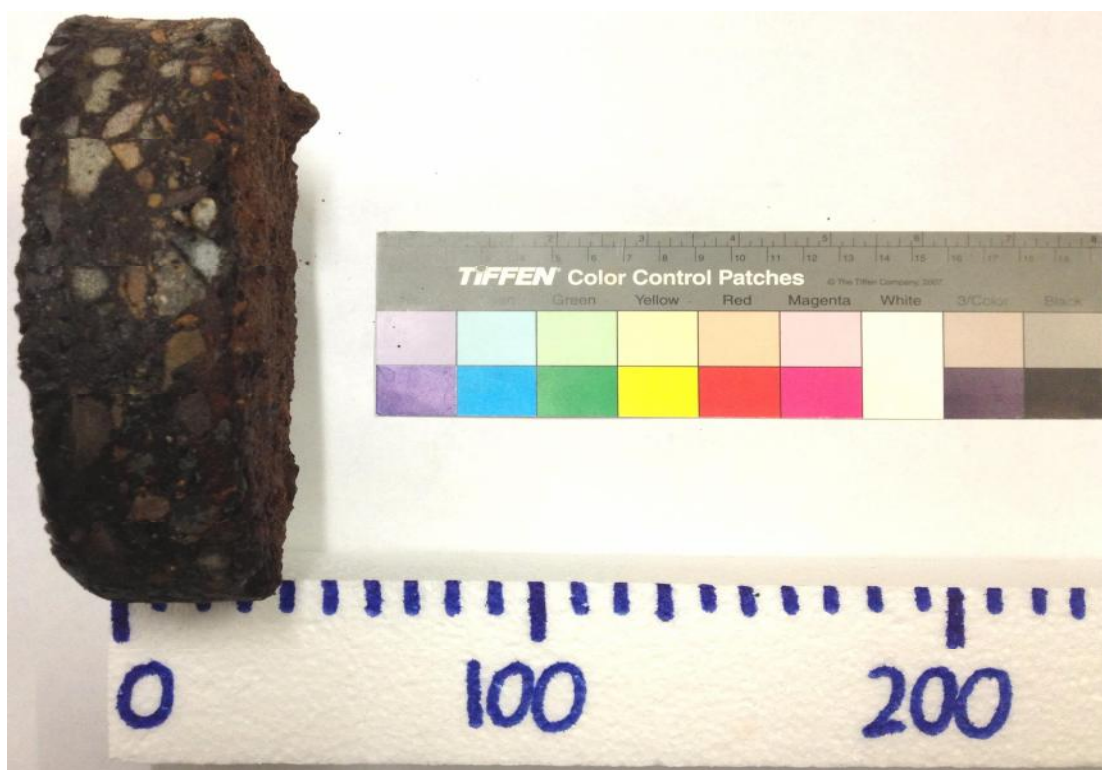



 Geotechnics	Client: Roads and Maritime Services	
	Project: Windsor Bridge Replacement Detail Design	
	Title: Pavement Core Log Report	
	Project No NB98005	Location ID: PC04



Contractor: Terratest Pty. Ltd. (Tim Tucker)		Core Method: Wet	Position: George St, EB lane
Date: 18.02.2013		Core Diameter: 150 mm	Location: Southern Approach
Equipment: Diatube		Logged By: DA	Checked By: SRR
Depth (mm)		Description	
From	To		
0	10	Asphaltic Concrete: Aggregate 5 - 10mm, fair condition, few small voids	
10	35	Asphaltic Concrete: Aggregate 5 - 15mm, fair condition, few small voids	
35		<b>Pavement core terminated at 35mm, continued as borehole</b>	
35	300	Road-base: Sandy Silt, brown/pale brown, trace clay, fine grained sand, trace fine sub-angular to sub-rounded gravel, dry to moist, fill	
300	1000	Sub-grade: Silty Sand, red-brown, trace clay, dry to moist, fine to medium grained sand, dense	
1000	1500	Sub-grade: Silty Clay, red-brown, medium plasticity, some fine grained sand, moist, hard	
1500		<b>Borehole terminated at 2000mm, target depth</b>	

Photo:




 Geotechnics	Client: Roads and Maritime Services	
	Project: Windsor Bridge Replacement Detail Design	
	Title: Pavement Core Log Report	
	Project No NB98005	Location ID: PC05

Contractor: Terratest Pty. Ltd. (Tim Tucker)		Core Method: Wet	Position: Wilberforce Rd, SB lane
Date: 19.02.2013		Core Diameter: 300 mm	Location: Northern Approach
Equipment: Diatube		Logged By: DA	Checked By: SRR
Depth (mm)		Description	
From	To		
0	80	Asphaltic Concrete:: Aggregate 5 - 10mm, some aggregate up to 20mm, fair condition, few small voids	
80		<b>Pavement core terminated at 80mm, continued as borehole</b>	
80	500	Road-base: Gravelly Sand, brown, fine to medium grained, fine to medium sub-angular to sub-rounded gravel, trace silt, dry to moist, fill	
500	2000	Sub-grade: Clayey Silt, dark brown, low plasticity, moist, firm, alluvium	
2000		<b>Borehole terminated at 2000mm, target depth</b>	

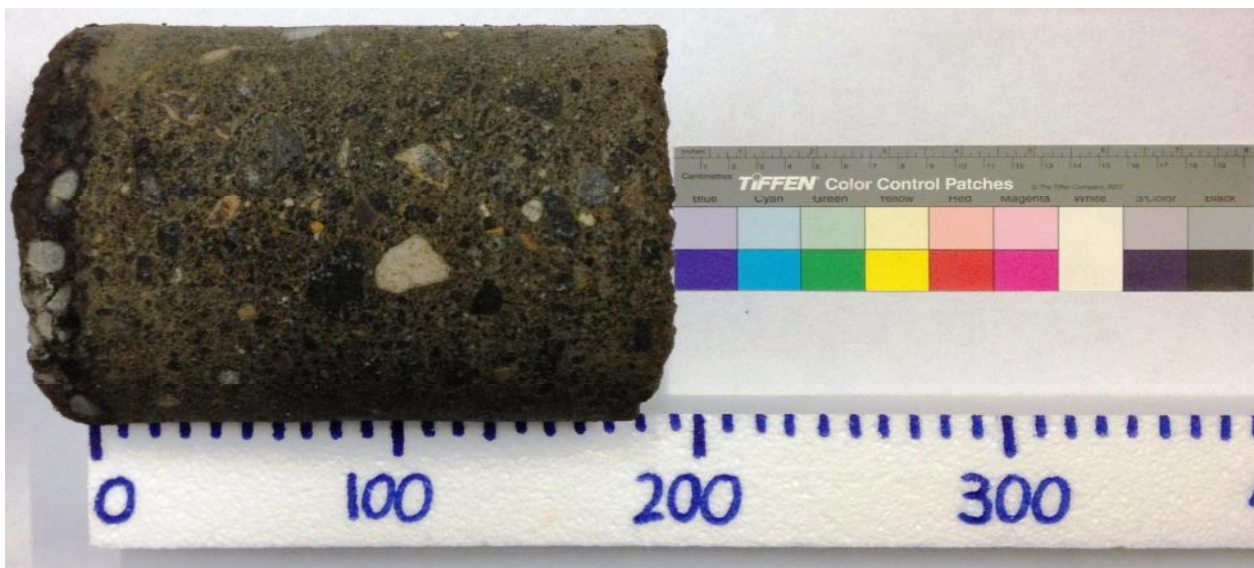
Photo:




 Geotechnics	Client: Roads and Maritime Services	
	Project: Windsor Bridge Replacement Detail Design	
	Title: Pavement Core Log Report	
	Project No NB98005	Location ID: PC07

Contractor: Terratest Pty. Ltd. (Tim Tucker)		Core Method: Wet	Position: Freemans Reach Rd, SB lane
Date: 19.02.2013		Core Diameter: 150 mm	Location: Northern Approach
Equipment: Diatube		Logged By: DA	Checked By: SRR
Depth (mm)		Description	
From	To		
0	15	Asphaltic Concrete:: Aggregate 5 - 15mm, fair condition, few small voids	
15	170	Asphaltic Concrete:: Aggregate up to 25mm, possible Lean Mix Concrete (LMC)	
170		<b>Pavement core terminated at 170mm, continued as borehole</b>	
170	500	Road-base: Gravelly Sand, grey-brown, fine to medium grained sand, fine to medium sub-angular to sub-rounded gravel, trace clay, trace silt, dry to moist, fill	
500	700	(Stabilised Layer) Sand, pale grey-pale brown, fine to medium grained, cement stabilised (cement odour), dry to moist, fill	
700	1500	Sub-grade: Clayey Silt, dark brown, low plasticity, moist, firm, alluvium	
1500		<b>Borehole terminated at 2000mm, target depth</b>	

Photo:

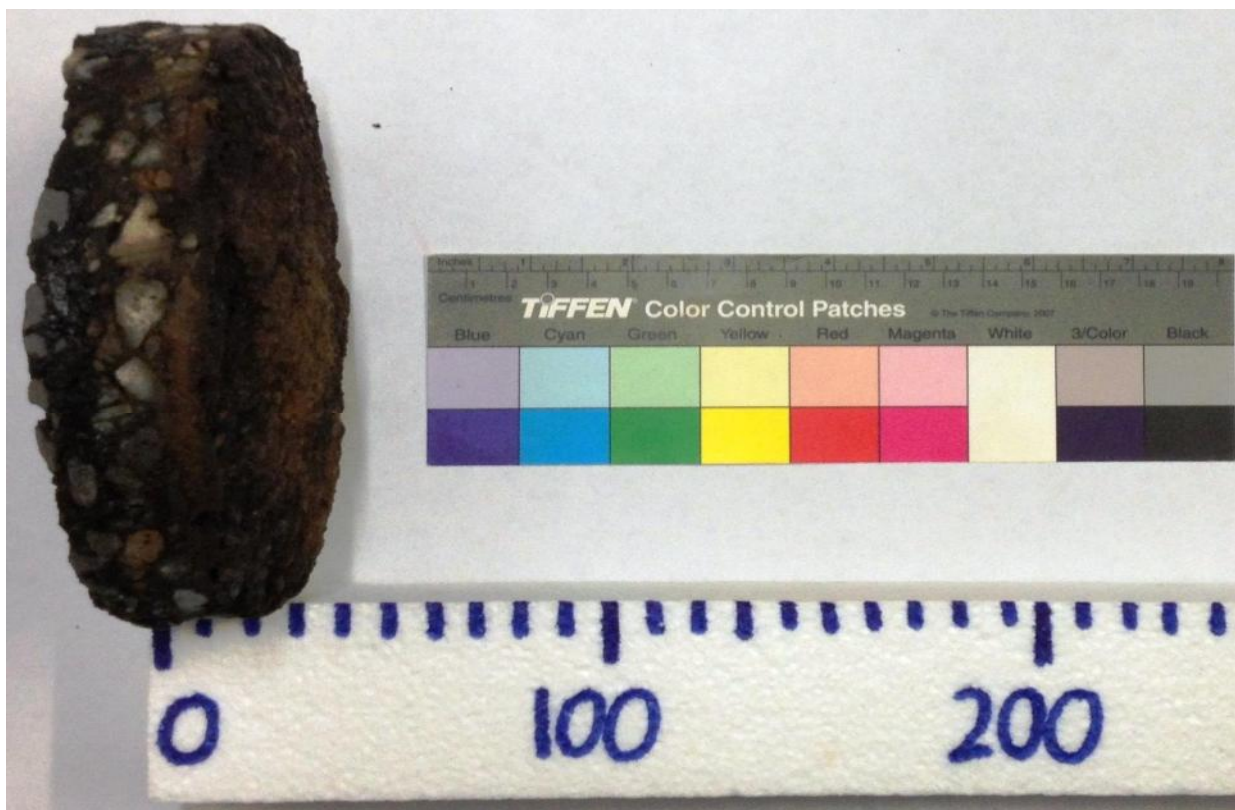



 Geotechnics	Client: Roads and Maritime Services	
	Project: Windsor Bridge Replacement Detail Design	
	Title: Pavement Core Log Report	
	Project No NB98005	Location ID: PC08



Contractor: Terratest Pty. Ltd. (Tim Tucker)		Core Method: Wet	Position: Wilberforce Road, SB lane
Date: 18.02.2013		Core Diameter: 150 mm	Location: Northern Approach
Equipment: Diatube		Logged By: DA	Checked By: SRR
Depth (mm)		Description	
From	To		
0	10	Asphaltic Concrete: Aggregate 15mm, fair condition, few small voids	
10	35	Asphaltic Concrete: Aggregate 5 - 15mm, fair condition, few small voids	
35		<b>Pavement core terminated at 35mm, continued as borehole</b>	
35	350	Road-base: Gravelly Sand, brown, fine to medium grained sand, fine to medium sub-angular to sub-rounded gravel, trace silt, dry to moist, fill	
350	600	Sub-base/select: Silty Sand, dark grey-brown, fine to medium grained sand, some fine sub-angular gravel, dry to moist, fill	
600	1500	Sub-grade: Clayey Silt, dark brown, low plasticity, moist, firm, alluvium	
1500		<b>Borehole terminated at 1500mm, target depth</b>	

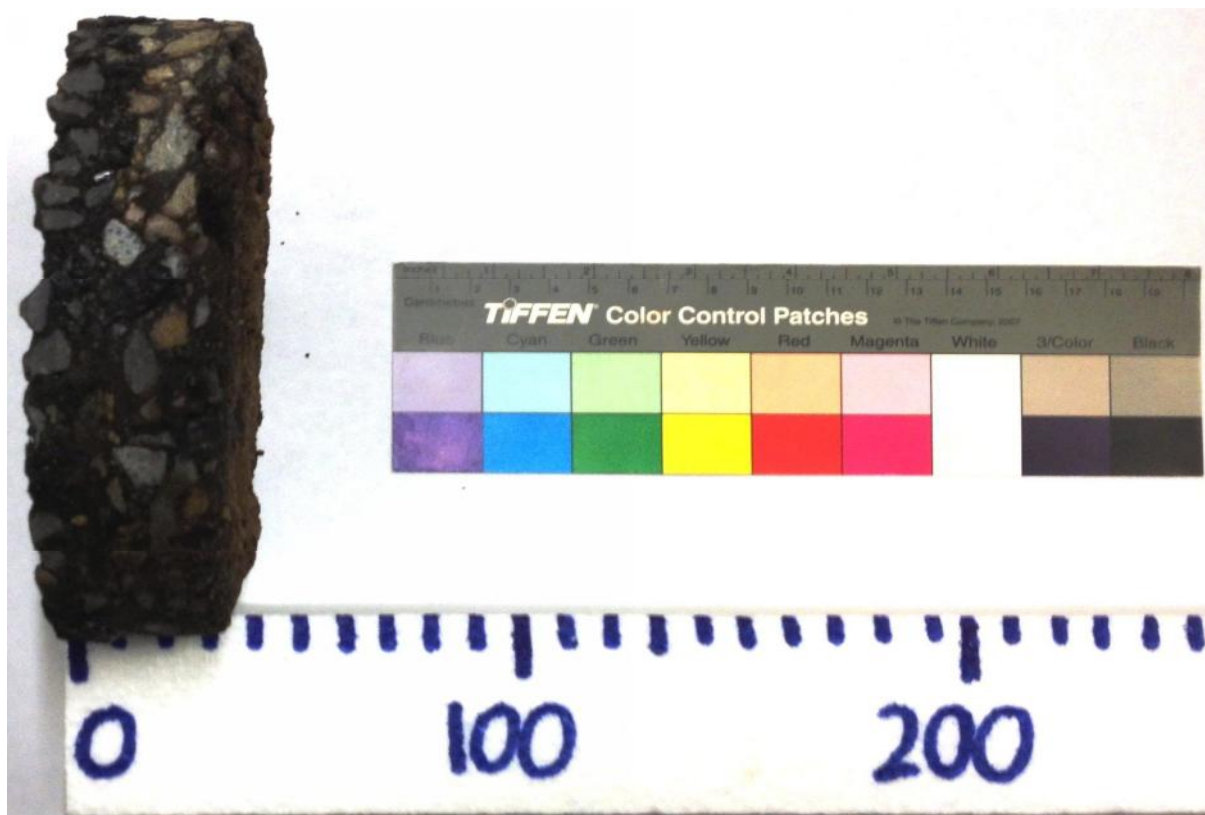
Photo:



 Geotechnics	Client: Roads and Maritime Services	
	Project: Windsor Bridge Replacement Detail Design	
	Title: Pavement Core Log Report	
	Project No NB98005	Location ID: PC09

Contractor: Terratest Pty. Ltd. (Tim Tucker)		Core Method: Wet	Position: Wilberforce Road, SB lane
Date: 18.02.2013		Core Diameter: 150 mm	Location: Northern Approach
Equipment: Diatube		Logged By: DA	Checked By: SRR
Depth (mm)		Description	
From	To		
0	10	Asphaltic Concrete: Aggregate 5 - 10mm, fair condition, few small voids	
10	35	Asphaltic Concrete: Aggregate 5 - 15mm, fair condition, few small voids	
35		<b>Pavement core terminated at 35mm, continued as borehole</b>	
35	350	Road-base: Gravelly Sand, brown, fine to medium grained sand, fine to medium sub-angular to sub-rounded gravel, trace silt, dry to moist, fill	
350	800	Sub-base/select: Sand, brown-grey, fine to medium grained, some silt, trace fine sub-angular to sub-rounded gravel, dry to moist, fill	
800	1500	Sub-grade: Clayey Silt, dark brown, low plasticity, moist, firm, alluvium	
1500		<b>Borehole terminated at 1500mm, target depth</b>	

Photo:

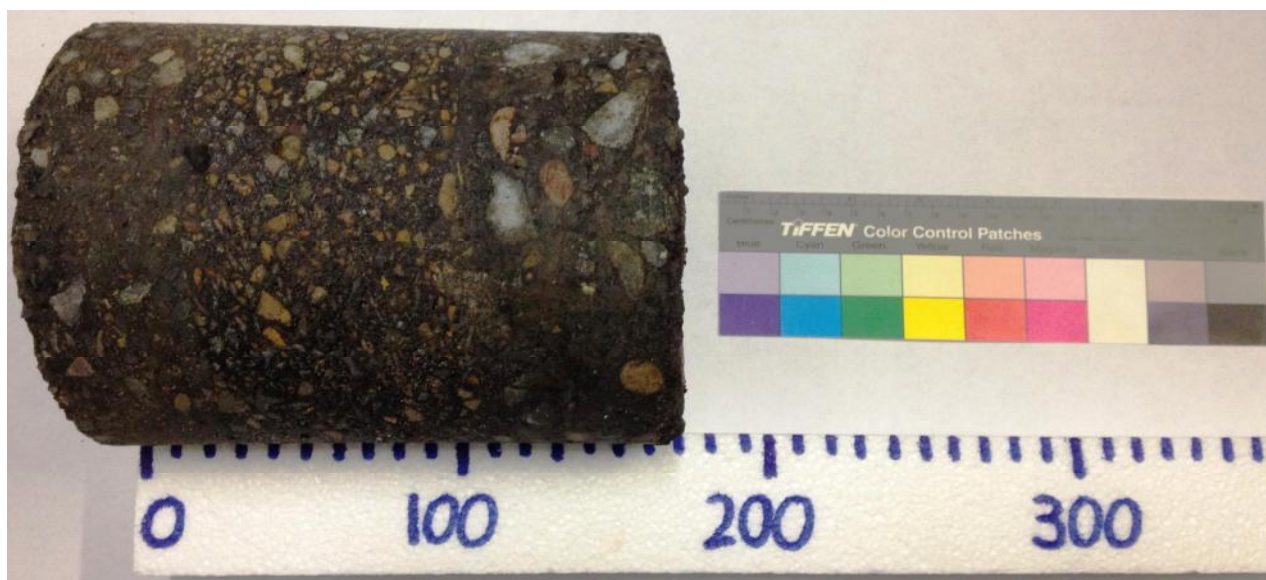



Geotechnics

Client: Roads and Maritime Services	
Project: Windsor Bridge Replacement	
Detail Design	
Title: Pavement Core Log Report	
Project No	NB98005
Location ID:	PC010

Contractor: Terratest Pty. Ltd. (Tim Tucker)		Core Method: Wet	Position: George Street - WB lane
Date: 18.02.2013		Core Diameter: 150 mm	Location: Southern Approach
Equipment: Diatube		Logged By: DA	Checked By: SRR
Depth (mm)		Description	
From	To		
0	45	Asphaltic Concrete: Aggregate 10mm, fair condition, occasional small void	
45	120	Asphaltic Concrete: Aggregate 5 - 10mm, fair condition, occasional small void	
120	170	Asphaltic Concrete: Aggregate up to 25mm, fair condition, few small voids	
170		<b>Pavement core terminated at 170mm, continued as borehole</b>	
170	400	<b>Sandstone block:</b> grey-brown, fine to medium grained, ground down to fragments, hard penetration	
400	2000	Silty clay, red-brown, medium plasticity, some fine grained sand, moist, hard	
2000		<b>Borehole terminated at 1500mm, target depth</b>	

Photo:

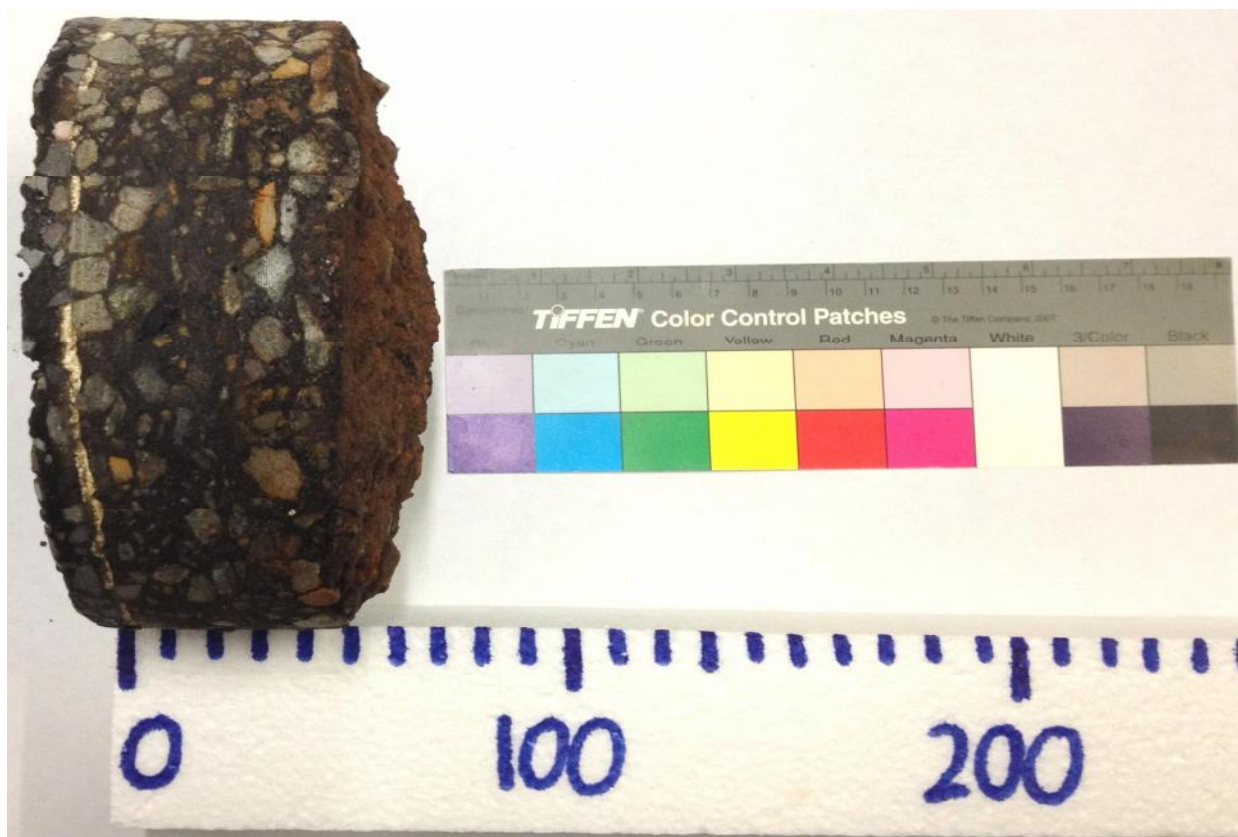



 Geotechnics	Client: Roads and Maritime Services	
	Project: Windsor Bridge Replacement Detail Design	
	Title: Pavement Core Log Report	
	Project No: NB98005	Location ID: PC11



Contractor: Terratest Pty. Ltd. (Tim Tucker)		Core Method: Wet	Position: George Street - WB lane
Date: 18.02.2013		Core Diameter: 150 mm	Location: Southern Approach
Equipment: Diatube		Logged By: DA	Checked By: SRR
Depth (mm)		Description	
From	To		
0	10	Asphaltic Concrete: Aggregate 5 - 10mm, fair condition, few small voids	
10	55	Asphaltic Concrete: Aggregate 5 - 15mm, fair condition, occasional small void	
55		<b>Pavement core terminated at 55mm, continued as borehole</b>	
55	300	Road-base: Sandy Silt, brown/pale brown, fine grained sand, trace fine sub-angular to sub-rounded gravel, dry to moist, fill	
300	900	Sub-grade: Silty Sand, red-brown, fine to medium grained, trace clay, dry to moist, dense	
900	1500	Sub-grade: Silty Clay, red-brown, medium plasticity, some fine grained sand, moist, hard	
1500		<b>Borehole terminated at 1500mm, target depth</b>	

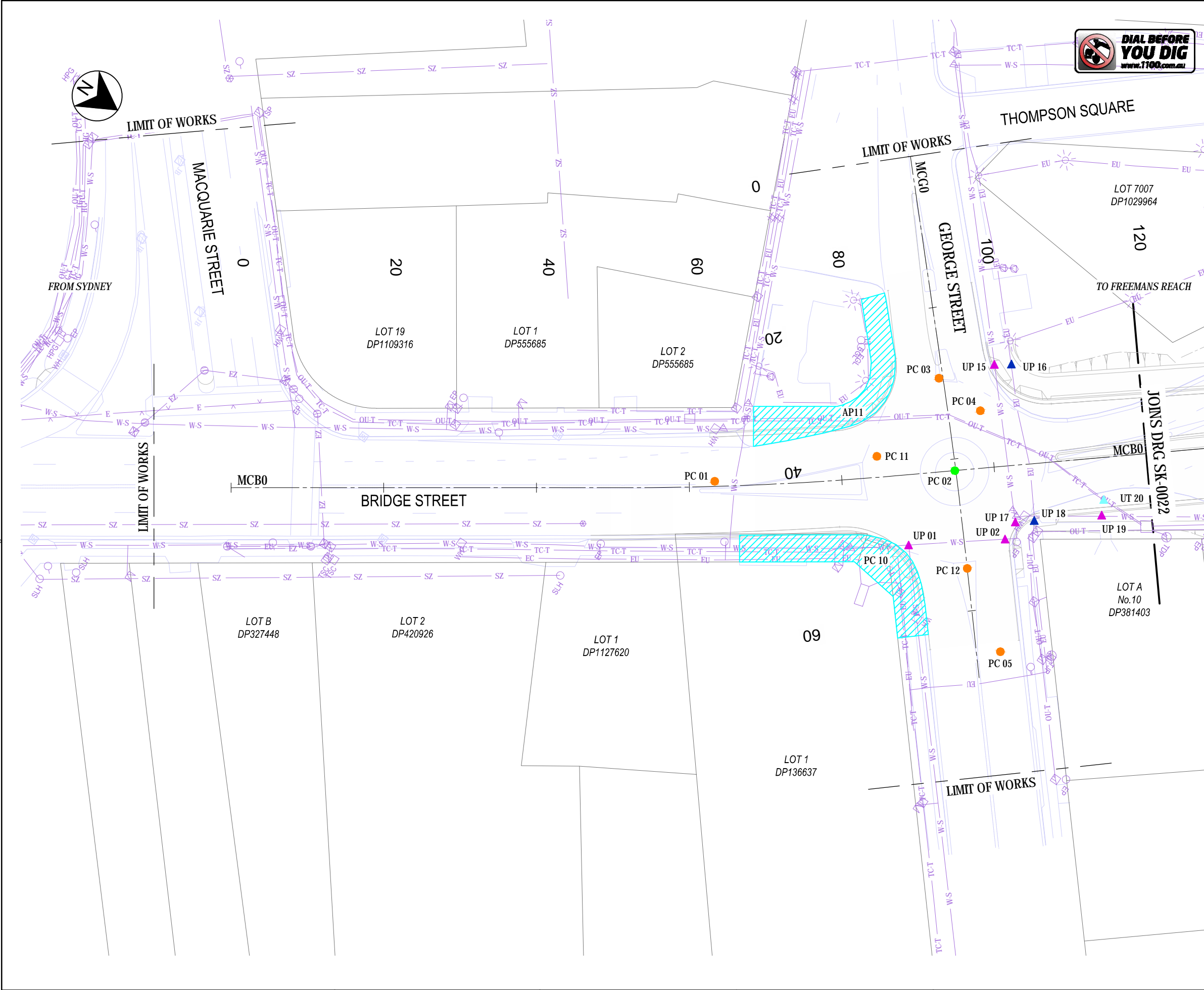
Photo:



 Geotechnics	Client: Roads and Maritime Services	
	Project: Windsor Bridge Replacement Detail Design	
	Title: Pavement Core Log Report	
	Project No NB98005	Location ID: PC12



DATE: 8/02/2013 12:57:30 PM LOGN NAME: COMEZ, CLEO (SKM)  
LOCATION: F:\BIF\Projects\NB98005\Deliverables\Drawings\Civil\Sketches\NB98005-SK-0021-0028.dwg



**LEGEND**

**FOR REFERENCE**

EXISTING PROPERTY BOUNDARY

PROPOSED PROJECT BOUNDARY

PROPOSED EASEMENT BOUNDARY

RETAINING WALL

**EXISTING UTILITIES TO BE RETAINED**

EU

S

SR

SZ

T

TC-T

OU-T

W-S

WH

ELECTRICAL CONDUIT - UNDERGROUND

SEWER MAIN

SEWER RISING MAIN

SEWER MAIN - DIGITISED

TELSTRA TELEPHONE LINE

TELSTRA TELEPHONE CONDUIT

TELSTRA OPTICAL FIBRE - UNDERGROUND

WATER MAIN - SYDNEY WATER

WATER HOUSE CONNECTION

LIGHT POLE

ELECTRICAL LIGHT POLE

ELECTRICAL POLE / ELECTRICAL GARDEN LIGHT

ELECTRICAL JUNCTION BOX

SINGLE CONCRETE PIT

TWIN CONCRETE PIT

TELEPHONE DISTRIBUTION PILLAR

SUMP

SEWER MANHOLE COVER

HYDRANT

STOP VALVE

WATER METER

WATER AIR VALVE

**UTILITIES INVESTIGATION LOCATION**

WATER MAIN

SEWER MAIN

TELSTRA MAIN

ELECTRICAL CABLES

DIG SLOT FOR SERVICES

**PAVEMENT TESTING LOCATION**

« %Saa D5J9A9BH7CF9: CF 5GD: 5dH THICKNESS, TYPE & THICKNESS OF BASE, TYPE OF SUBGRADE (8 OF)

« %Saa D5J9A9BH7CF9: 5G: 56CJ9 PLUS CBR OF SUBGRADE (2 OF)

**GEOTECHNICAL INVESTIGATION LOCATION**

OVERWATER SEDIMENT SAMPLING FOR A.S.S TESTING AND WASTE CLASSIFICATION

BOREHOLES FOR WATER QUALITY BASIN SUB STRATA & SCOUR PROTECTION DESIGN

**HERITAGE SITES**

ARCHEOLOGICAL DIGS

- NOTES**
1.

2.
- ALL ABOVE GROUND SERVICES HAVE BEEN OMITTED FOR CLARITY

PRIOR TO COMMENCING ANY POTHOLING WORKS, LOCATION OF IDENTIFIED SERVICES TO BE FURTHER CONFIRMED BY LOCATORS

ORIGINAL DRAWING AT A3 SIZE				DESIGN PARTNERS				PROJECT				SKETCH			
SCALE 1:500								MR182 - BRIDGE STREET WINDSOR WINDSOR BRIDGE REPLACEMENT UTILITIES, PAVEMENT AND GEOTECHNICAL INVESTIGATIONS PLAN SHEET1				DRAWN BY			
CO-ORDINATE SYSTEM: MGA Zone 56				Shekhar Knight Mezz Pty Ltd A.C.N. 001 024 095 100 Christie Street St Leonards NSW 2065 Australia Tel: (02) 9928 2100 Fax: (02) 9928 2500				ISSUE DATE				SKETCH No			
HEIGHT DATUM: A.H.D.				CG				08.02.13				NB98005-SK-0021			
25 mm ON A3 ORIGINAL				D				REV				D			
This Drawing may have been prepared using colour and may be incomplete if copied															



LEGEND

FOR REFERENCE

- EXISTING PROPERTY BOUNDARY
- PROPOSED PROJECT BOUNDARY
- PROPOSED EASEMENT BOUNDARY
- RETAINING WALL

EXISTING UTILITIES TO BE RETAINED

- EU ELECTRICAL CONDUIT - UNDERGROUND
- S SEWER MAIN
- SR SEWER RISING MAIN
- SZ SEWER MAIN - DIGITISED
- T TELSTRA TELEPHONE LINE
- TC-T TELSTRA TELEPHONE CONDUIT
- OU-T TELSTRA OPTICAL FIBRE - UNDERGROUND
- W-S WATER MAIN - SYDNEY WATER
- WH WATER HOUSE CONNECTION
- LIGHT POLE
- ELECTRICAL LIGHT POLE
- EP / EGL ELECTRICAL POLE / ELECTRICAL GARDEN LIGHT
- ELECTRICAL JUNCTION BOX
- SINGLE CONCRETE PIT
- TWIN CONCRETE PIT
- TDP TELEPHONE DISTRIBUTION PILLAR
- POLE
- SUMP
- SEWER MANHOLE COVER
- HYDRANT
- STOP VALVE
- WATER METER
- WATER AIR VALVE

UTILITIES INVESTIGATION LOCATION

- WATER MAIN
- SEWER MAIN
- TELSTRA MAIN
- ELECTRICAL CABLES
- DIG SLOT FOR SERVICES

PAVEMENT TESTING LOCATION

- «%Saa D5J9A9BH7CF9: CF 5GD: 5dH THICKNESS, TYPE & THICKNESS OF BASE, TYPE OF SUBGRADE (8 OF)
- «%Saa D5J9A9BH7CF9 5G 56CJ9 PLUS CBR OF SUBGRADE (2 OF)

GEOTECHNICAL INVESTIGATION LOCATION

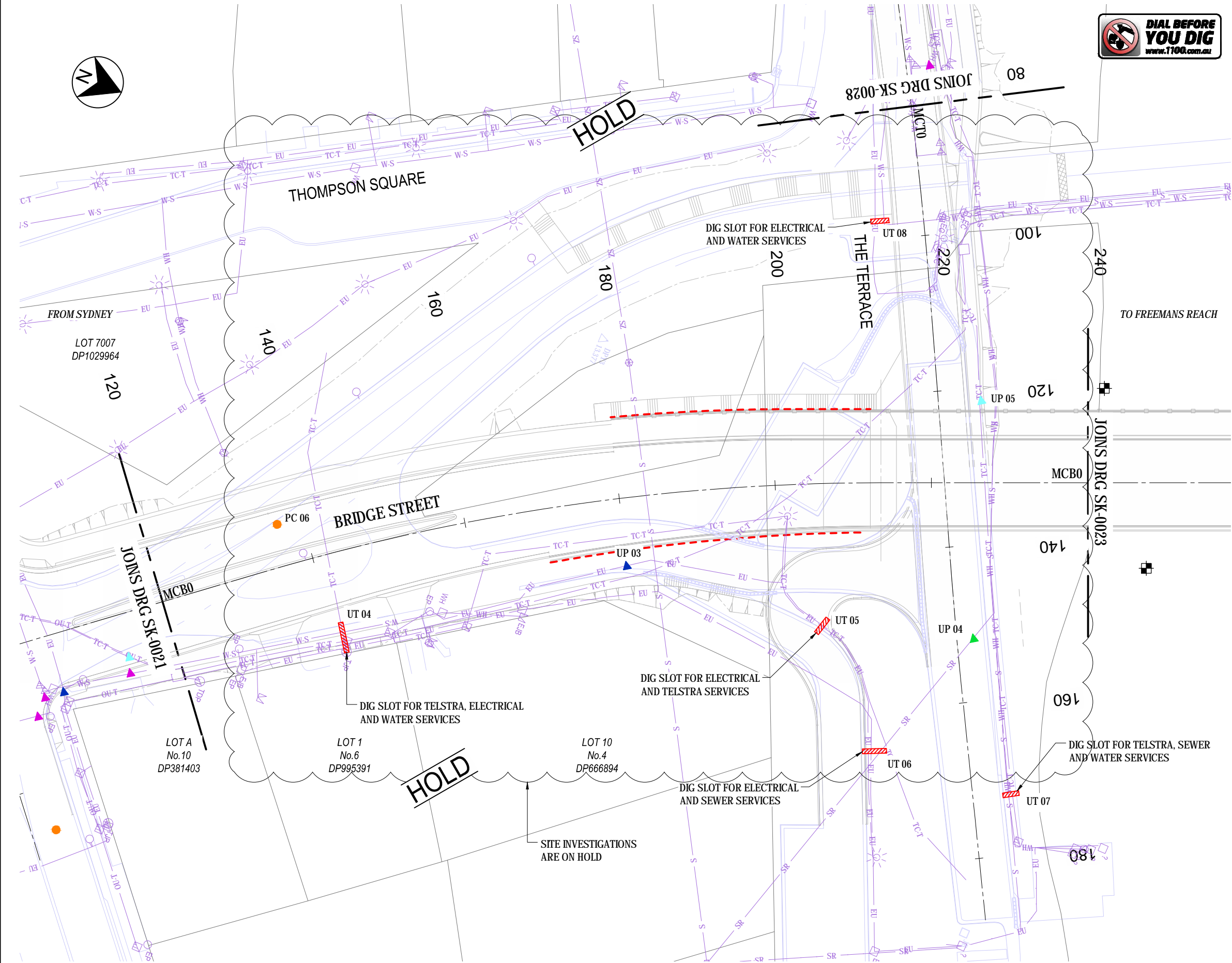
- OVERWATER SEDIMENT SAMPLING FOR A.S.S TESTING AND WASTE CLASSIFICATION
- BOREHOLES FOR WATER QUALITY BASIN SUB STRATA & SCOUR PROTECTION DESIGN

HERITAGE SITES

- ARCHEOLOGICAL DIGS

NOTES

- ALL ABOVE GROUND SERVICES HAVE BEEN OMITTED FOR CLARITY
- PRIOR TO COMMENCING ANY POTHOLING WORKS, LOCATION OF IDENTIFIED SERVICES TO BE FURTHER CONFIRMED BY LOCATORS



REV	DATE	DESCRIPTION	DRAWN	REVIEWED	APPROVAL
D	08.02.13	ISSUED FOR INFORMATION	CG	BDP	BDP
C	30.01.13	ISSUED FOR INFORMATION	CG	BDP	BDP
B	24.01.13	ISSUED FOR INFORMATION	CG	BDP	BDP
A	16.01.13	ISSUED FOR INFORMATION	CG	BDP	BDP

ORIGINAL DRAWING AT A3 SIZE
SCALE 1:500
CO-ORDINATE SYSTEM MGA Zone 56
HEIGHT DATUM: A.H.D.

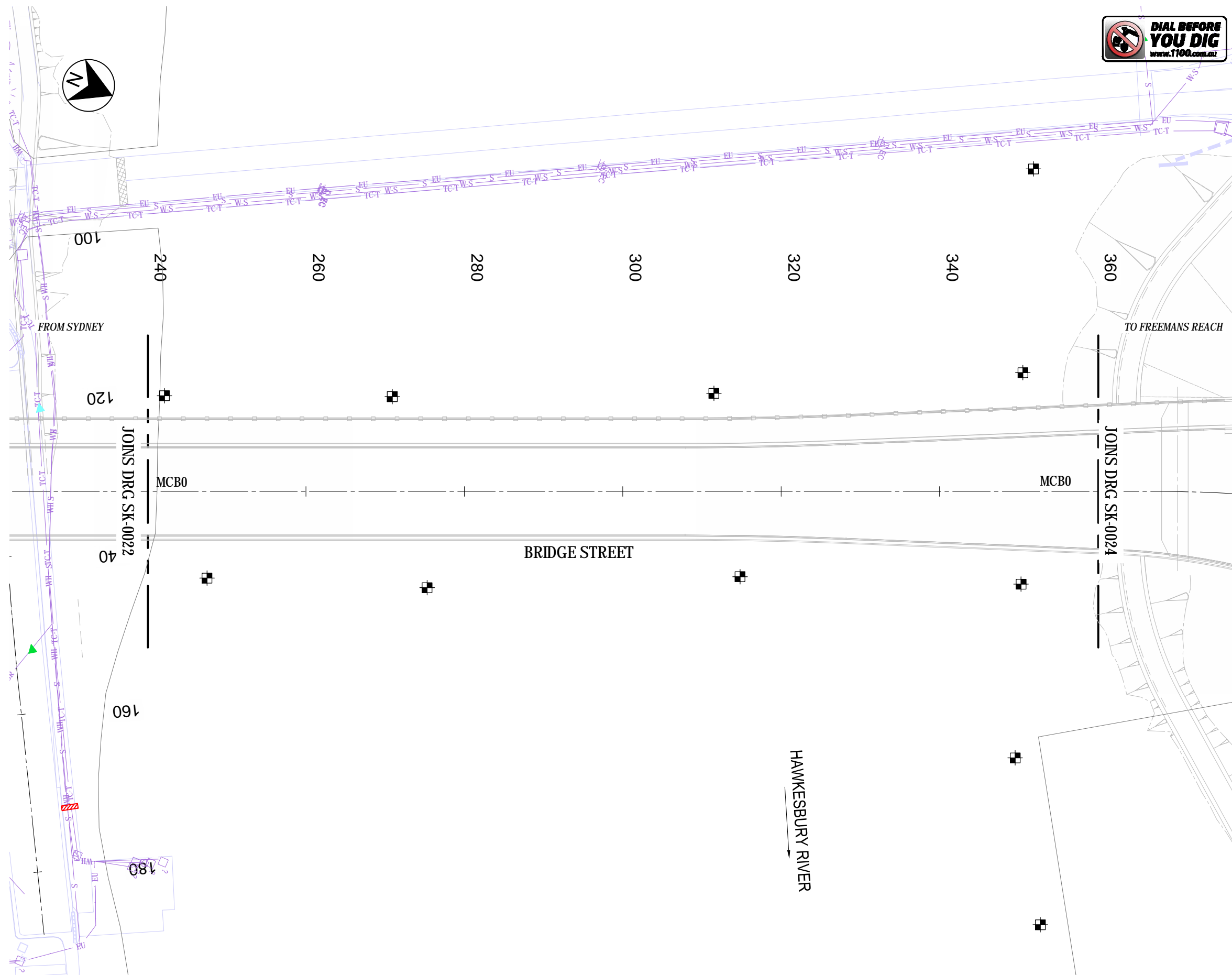
DESIGN PARTNERS

Sheldale Knight Moore Pty Ltd  
A.C.N. 001 024 095  
100 Christie Street  
St Leonards NSW 2065 Australia  
Tel: (02) 9928 2100 Fax: (02) 9928 2500

PROJECT























MR182 - BRIDGE STREET WINDSOR  
WINDSOR BRIDGE REPLACEMENT  
UTILITIES, PAVEMENT AND GEOTECHNICAL  
INVESTIGATIONS PLAN  
SHEET2






SKETCH			
DRAWN BY	ISSUE DATE	SKETCH No	REV
CG	08.02.13	NB98005-SK-0022	D



## LEGEND



\_\_\_\_\_ EXISTING PROPERTY BOUNDARY  
 - - - - - PROPOSED PROJECT BOUNDARY  
 - . - . - PROPOSED EASEMENT BOUNDARY  
 - - - - - RETAINING WALL

	EU	ELECTRIC CONDUIT - UNDERGROUND
	S	SEWER MAIN
	SR	SEWER RISING MAIN
	SZ	SEWER MAIN - DIGITISED
	T	TELSTRA TELEPHONE LINE
	TC-T	TELSTRA TELEPHONE CONDUIT
	OU-T	TELSTRA OPTICAL FIBRE - UNDERGROUND
	W-S	WATER MAIN - SYDNEY WATER
	WH	WATER HOUSE CONNECTION
		LIGHT POLE
	EP / EGL	ELECTRICAL LIGHT POLE
		ELECTRICAL JUNCTION BOX
		SINGLE CONCRETE PIT
		TWIN CONCRETE PIT
	TDP	TELEPHONE DISTRIBUTION PILLAR
		POLE
		SUMP
		SEWER MANHOLE COVER
		HYDRANT
		STOP VALVE
		WATER METER
		WATER AIR VALVE

 WATER MAIN  
 SEWER MAIN  
 TELSTRA MAIN  
 ELECTRICAL CABLES  
 DIG SLOT FOR SERVICES

«%\$a D5J9A9BH7CF9: CF 5CD-5CH  
THICKNESS, TYPE & THICKNESS OF BASE,  
TYPE OF SUBGRADE (8 OF)

«%\$a D5J9A9BH7CF9 5C56CJ9  
PLUS CBR OF SUBGRADE (2 OF)

	OVERWATER SEDIMENT SAMPLING FOR A.S.S TESTING AND WASTE CLASSIFICATION
	BOREHOLES FOR WATER QUALITY BASIN SUB STRATA & SCOUR PROTECTION DESIGN


 ARCHEOLOGICAL DIGS

1. ALL ABOVE GROUND SERVICES HAVE BEEN OMITTED FOR CLARITY
2. PRIOR TO COMMENCING ANY POTHOLING WORKS, LOCATION OF IDENTIFIED SERVICES TO BE FURTHER CONFIRMED BY LOCATORS

DRAWN BY <b>CG</b>	ISSUE DATE <b>08.02.13</b>	SKETCH No <b>NB98005-SK-0023</b>	REV <b>D</b>
-----------------------	-------------------------------	-------------------------------------	-----------------

ORIGINAL DRAWING AT A3 SIZE

SCALE 1:500



AT A3

CO-ORDINATE SYSTEM: MGA Zone 56	HEIGHT DATUM: A.H.D.
---------------------------------	----------------------

DESIGN PARTNERS

**SKM**

Shick Knight Mez Pty Ltd  
A.C.N. 501 024 065  
100 Christie Street  
St Leonards NSW 2060 Australia  
Tel: (02) 9928 2100 Fax: (02) 9928 2500





LEGEND

FOR REFERENCE

- EXISTING PROPERTY BOUNDARY
- PROPOSED PROJECT BOUNDARY
- PROPOSED EASEMENT BOUNDARY
- RETAINING WALL

EXISTING UTILITIES TO BE RETAINED

- EU ELECTRICAL CONDUIT - UNDERGROUND
- S SEWER MAIN
- SR SEWER RISING MAIN
- SZ SEWER MAIN - DIGITISED
- T TELSTRA TELEPHONE LINE
- TC-T TELSTRA TELEPHONE CONDUIT
- OU-T TELSTRA OPTICAL FIBRE - UNDERGROUND
- W-S WATER MAIN - SYDNEY WATER
- WH WATER HOUSE CONNECTION
- LIGHT POLE
- EP / EGL ELECTRICAL LIGHT POLE
- ELECTRICAL JUNCTION BOX
- SINGLE CONCRETE PIT
- TWP TWIN CONCRETE PIT
- TELEPHONE DISTRIBUTION PILLAR
- POLE
- SUMP
- SEWER MANHOLE COVER
- HYDRANT
- STOP VALVE
- WATER METER
- WATER AIR VALVE

UTILITIES INVESTIGATION LOCATION

- WATER MAIN
- SEWER MAIN
- TELSTRA MAIN
- ELECTRICAL CABLES
- DIG SLOT FOR SERVICES

PAVEMENT TESTING LOCATION

- « %Saa TdJ9A9BH7CF9: CF 5GD: 5@H THICKNESS, TYPE & THICKNESS OF BASE, TYPE OF SUBGRADE (8 OF)
- « %Saa TdJ9A9BH7CF9: 5G: 56CJ9 PLUS CBR OF SUBGRADE (2 OF)

GEOTECHNICAL INVESTIGATION LOCATION

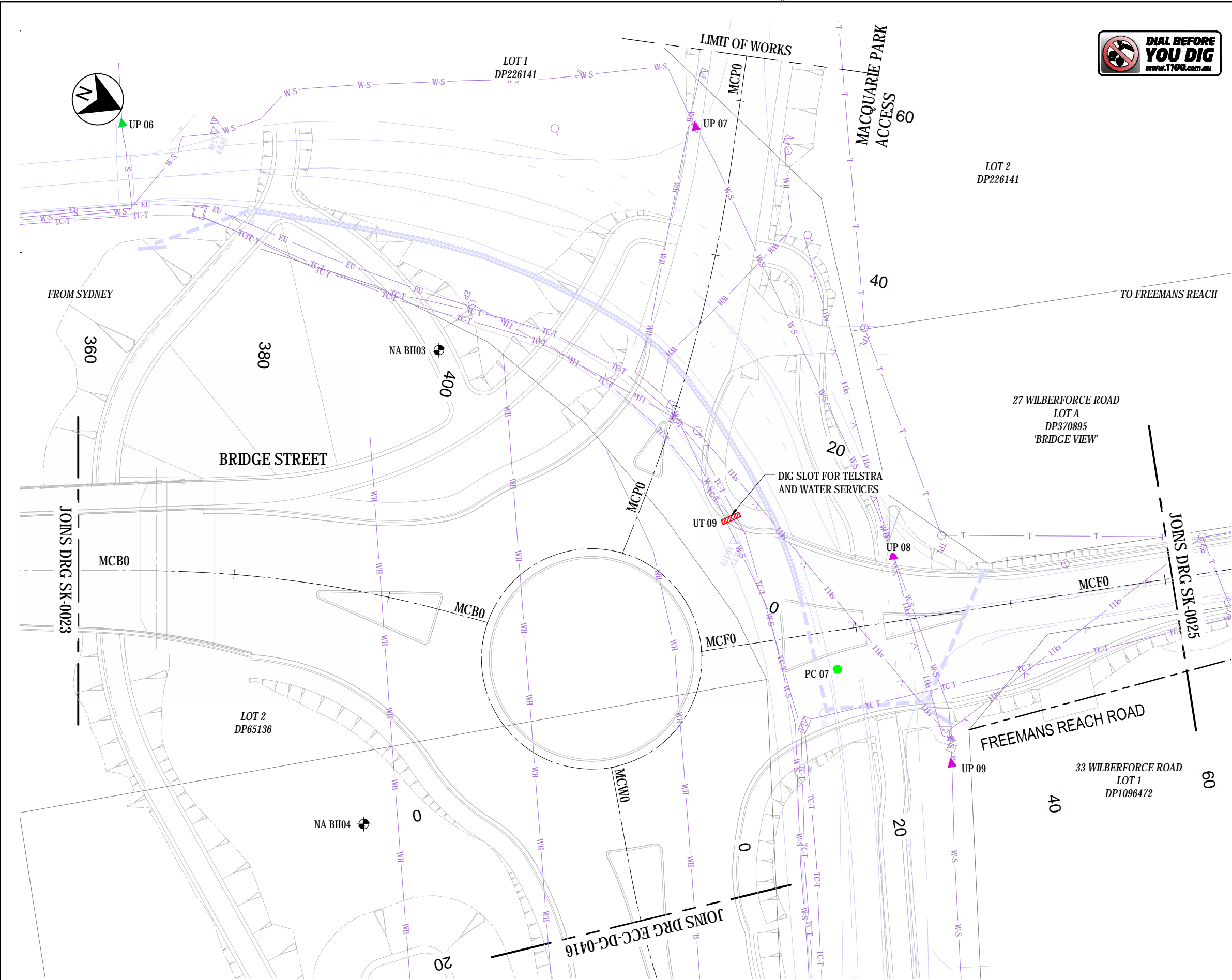
- OVERWATER SEDIMENT SAMPLING FOR A.S.S TESTING AND WASTE CLASSIFICATION
- BOREHOLES FOR WATER QUALITY BASIN SUB STRATA & SCOUR PROTECTION DESIGN

HERITAGE SITES

- ARCHEOLOGICAL DIGS

NOTES

- ALL ABOVE GROUND SERVICES HAVE BEEN OMITTED FOR CLARITY
- PRIOR TO COMMENCING ANY POTHOLING WORKS, LOCATION OF IDENTIFIED SERVICES TO BE FURTHER CONFIRMED BY LOCATORS



REV	DATE	DESCRIPTION	DRAWN	REVIEWED	APPROVAL
D	08.02.13	ISSUED FOR INFORMATION	CG	BDP	BDP
C	30.01.13	ISSUED FOR INFORMATION	CG	BDP	BDP
B	24.01.13	ISSUED FOR INFORMATION	CG	BDP	BDP
A	16.01.13	ISSUED FOR INFORMATION	CG	BDP	BDP

ORIGINAL DRAWING AT A3 SIZE
SCALE 1:500
CO-ORDINATE SYSTEM MGA Zone 56
HEIGHT DATUM: A.H.D.

DESIGN PARTNERS

Sheldale Knight Mox Pty Ltd  
A.C.N. 001 024 095  
100 Christie Street  
St Leonards NSW 2065 Australia  
Tel: (02) 9928 2100 Fax: (02) 9928 2500

PROJECT

MR182 - BRIDGE STREET WINDSOR  
WINDSOR BRIDGE REPLACEMENT  
UTILITIES, PAVEMENT AND GEOTECHNICAL  
INVESTIGATIONS PLAN  
SHEET4

SKETCH			
DRAWN BY	ISSUE DATE	SKETCH No	REV
CG	08.02.13	NB98005-SK-0024	D





LEGEND

FOR REFERENCE

- EXISTING PROPERTY BOUNDARY
- PROPOSED PROJECT BOUNDARY
- PROPOSED EASEMENT BOUNDARY
- RETAINING WALL

EXISTING UTILITIES TO BE RETAINED

- EU ELECTRICAL CONDUIT - UNDERGROUND
- S SEWER MAIN
- SR SEWER RISING MAIN
- SZ SEWER MAIN - DIGITISED
- T TELSTRA TELEPHONE LINE
- TC-T TELSTRA TELEPHONE CONDUIT
- OU-T TELSTRA OPTICAL FIBRE - UNDERGROUND
- W-S WATER MAIN - SYDNEY WATER
- WH WATER HOUSE CONNECTION
- LIGHT POLE
- EP / EGL ELECTRICAL LIGHT POLE
- ELECTRICAL POLE / ELECTRICAL GARDEN LIGHT
- ELECTRICAL JUNCTION BOX
- SINGLE CONCRETE PIT
- TWIN CONCRETE PIT
- TDP TELEPHONE DISTRIBUTION PILLAR
- POLE
- SUMP
- SEWER MANHOLE COVER
- HYDRANT
- STOP VALVE
- WATER METER
- WATER AIR VALVE

UTILITIES INVESTIGATION LOCATION

- WATER MAIN
- SEWER MAIN
- TELSTRA MAIN
- ELECTRICAL CABLES
- DIG SLOT FOR SERVICES

PAVEMENT TESTING LOCATION

- « %Sa a T5J9A9BH7CF9: CF 5GD: 5@H THICKNESS, TYPE & THICKNESS OF BASE, TYPE OF SUBGRADE (8 OF)
- « %Sa a T5J9A9BH7CF9: 5G: 56CJ9 PLUS CBR OF SUBGRADE (2 OF)

GEOTECHNICAL INVESTIGATION LOCATION

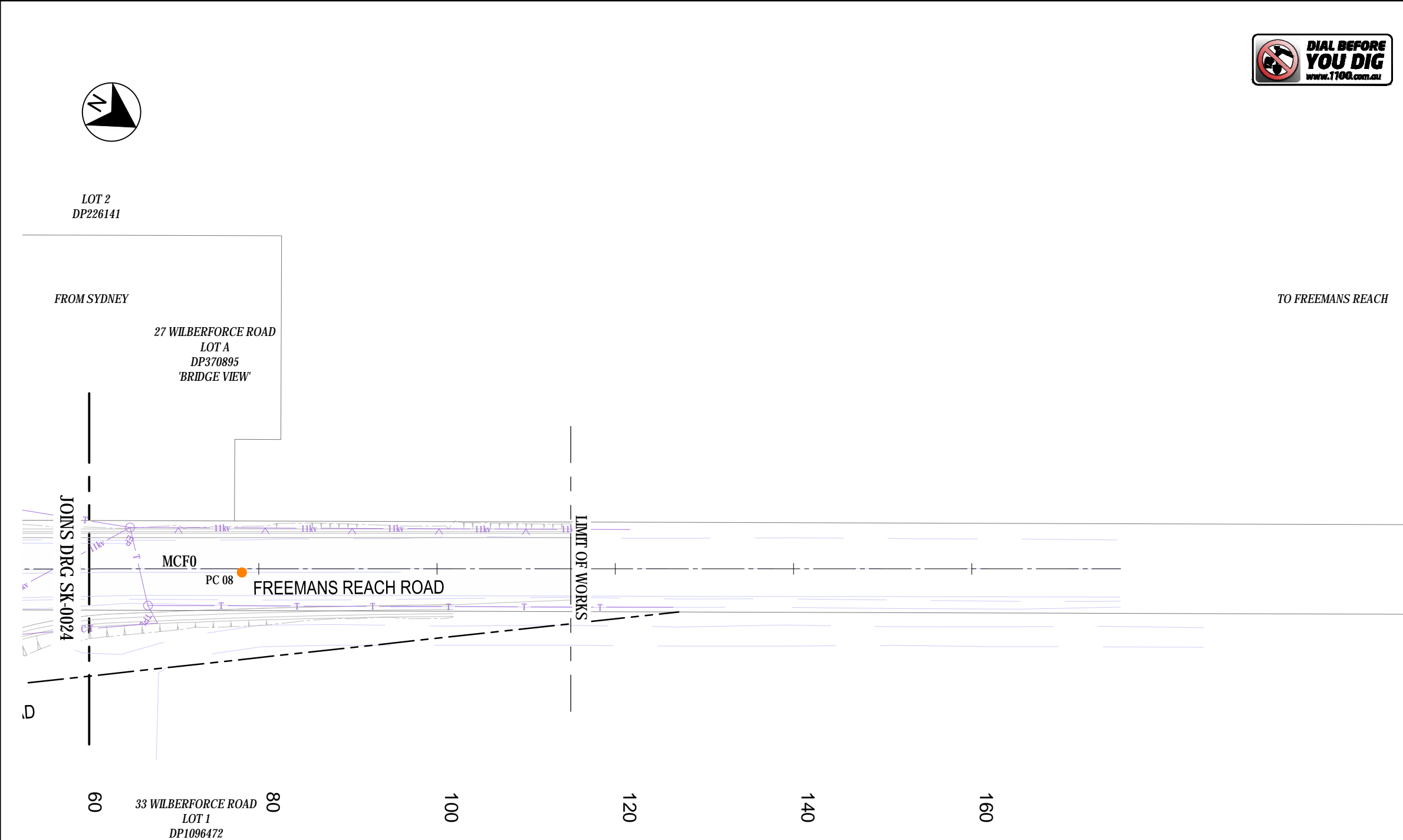
- OVERWATER SEDIMENT SAMPLING FOR A.S.S TESTING AND WASTE CLASSIFICATION
- BOREHOLES FOR WATER QUALITY BASIN SUB STRATA & SCOUR PROTECTION DESIGN


HERITAGE SITES

- ARCHEOLOGICAL DIGS

NOTES

- ALL ABOVE GROUND SERVICES HAVE BEEN OMITTED FOR CLARITY
- PRIOR TO COMMENCING ANY POTHOLING WORKS, LOCATION OF IDENTIFIED SERVICES TO BE FURTHER CONFIRMED BY LOCATORS



						ORIGINAL DRAWING AT A3 SIZE		DESIGN PARTNERS		PROJECT		SKETCH			
						SCALE 1:500		 Shardul Knight Meier Pty Ltd A.C.N. 001 024 095 100 Christie Street St Leonards NSW 2065 Australia Tel: (02) 9928 2100 Fax: (02) 9928 2500		MR182 - BRIDGE STREET WINDSOR WINDSOR BRIDGE REPLACEMENT UTILITIES, PAVEMENT AND GEOTECHNICAL INVESTGATIONS PLAN SHEET5					
D	08.02.13	ISSUED FOR INFORMATION	CG	BDP	BDP							DRAWN BY	ISSUE DATE	SKETCH No	REV
C	30.01.13	ISSUED FOR INFORMATION	CG	BDP	BDP							CG	08.02.13	NB98005-SK-0025	D
B	24.01.13	ISSUED FOR INFORMATION	CG	BDP	BDP										
A	16.01.13	ISSUED FOR INFORMATION	CG	BDP	BDP										
REV	DATE	DESCRIPTION	DRAWN	REVIEWED	APPROVAL	CO-ORDINATE SYSTEM: MGA Zone 96		HEIGHT DATUM: A.H.D.							
0	5	10	15	20	25 mm ON A3 ORIGINAL	This Drawing may have been prepared using colour and may be incomplete if copied									



LEGEND

FOR REFERENCE

- EXISTING PROPERTY BOUNDARY
- PROPOSED PROJECT BOUNDARY
- PROPOSED EASEMENT BOUNDARY
- RETAINING WALL

EXISTING UTILITIES TO BE RETAINED

- EU ELECTRICAL CONDUIT - UNDERGROUND
- S SEWER MAIN
- SR SEWER RISING MAIN
- SZ SEWER MAIN - DIGITISED
- T TELSTRA TELEPHONE LINE
- TC-T TELSTRA TELEPHONE CONDUIT
- OU-T TELSTRA OPTICAL FIBRE - UNDERGROUND
- W-S WATER MAIN - SYDNEY WATER
- WH WATER HOUSE CONNECTION
- LIGHT POLE
- EP / EGL ELECTRICAL POLE / ELECTRICAL GARDEN LIGHT
- ELECTRICAL JUNCTION BOX
- SINGLE CONCRETE PIT
- TWIN CONCRETE PIT
- TELEPHONE DISTRIBUTION PILLAR
- POLE
- SUMP
- SEWER MANHOLE COVER
- HYDRANT
- STOP VALVE
- WATER METER
- WATER AIR VALVE

UTILITIES INVESTIGATION LOCATION

- WATER MAIN
- SEWER MAIN
- TELSTRA MAIN
- ELECTRICAL CABLES
- DIG SLOT FOR SERVICES

PAVEMENT TESTING LOCATION

- « %Saa D5J9A9BH7CF9: CF 5GD: 5@H THICKNESS, TYPE & THICKNESS OF BASE, TYPE OF SUBGRADE (8 OF)
- « %Saa D5J9A9BH7CF9: 5G: 56CJ9 PLUS CBR OF SUBGRADE (2 OF)

GEOTECHNICAL INVESTIGATION LOCATION

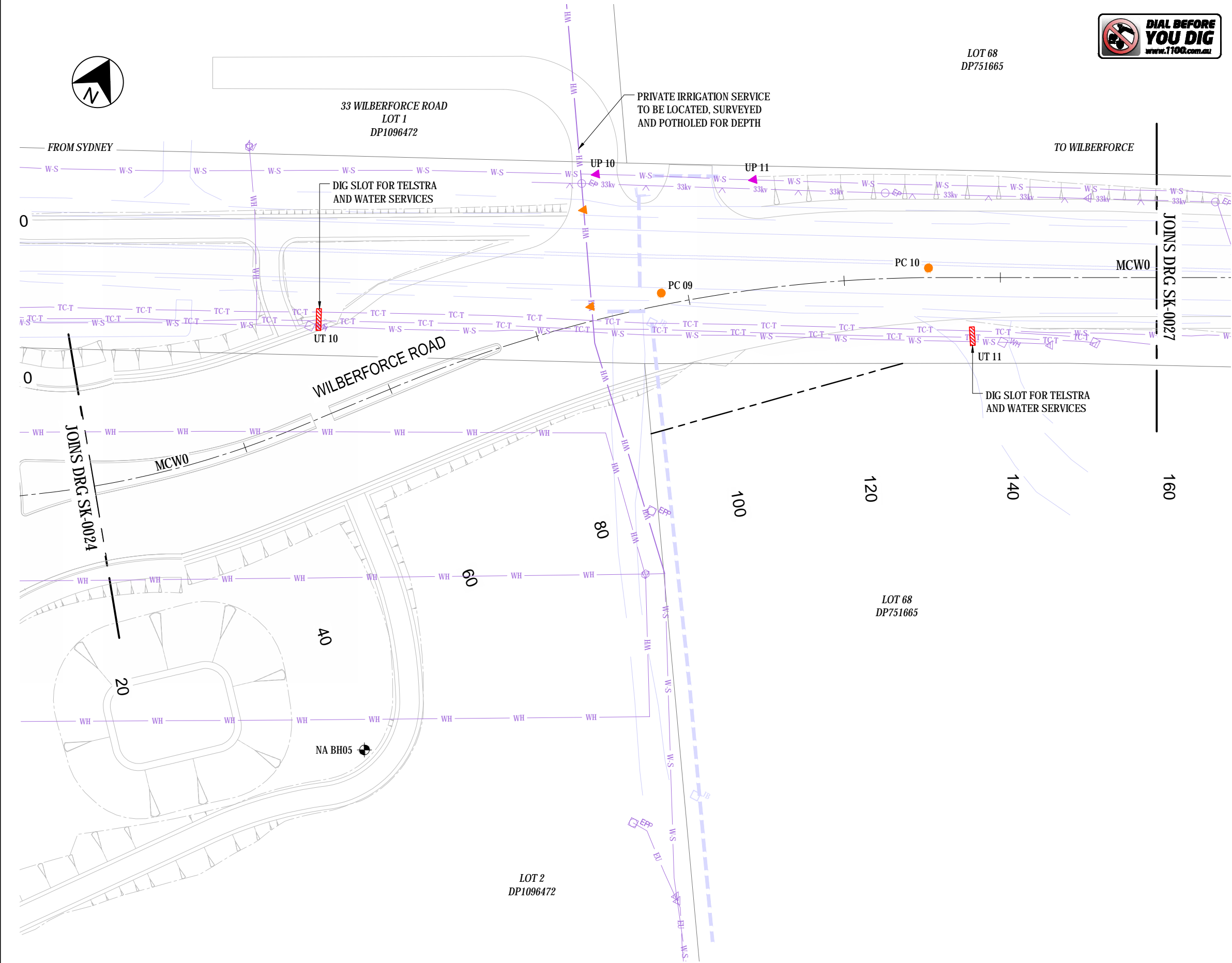
- OVERWATER SEDIMENT SAMPLING FOR A.S.S TESTING AND WASTE CLASSIFICATION
- BOREHOLES FOR WATER QUALITY BASIN SUB STRATA & SCOUR PROTECTION DESIGN

HERITAGE SITES

- ARCHEOLOGICAL DIGS

NOTES

- ALL ABOVE GROUND SERVICES HAVE BEEN OMITTED FOR CLARITY
- PRIOR TO COMMENCING ANY POTHOLING WORKS, LOCATION OF IDENTIFIED SERVICES TO BE FURTHER CONFIRMED BY LOCATORS



REV	DATE	DESCRIPTION	DRAWN	REVIEWED	APPROVAL
D	08.02.13	ISSUED FOR INFORMATION	CG	BDP	BDP
C	30.01.13	ISSUED FOR INFORMATION	CG	BDP	BDP
B	24.01.13	ISSUED FOR INFORMATION	CG	BDP	BDP
A	16.01.13	ISSUED FOR INFORMATION	CG	BDP	BDP

ORIGINAL DRAWING AT A3 SIZE
SCALE 1:500
CO-ORDINATE SYSTEM MGA Zone 56
HEIGHT DATUM: A.R.D.

DESIGN PARTNERS
SKM
Sheldale Knight Meyer Pty Ltd A.C.N. 001 024 095 100 Christie Street St Leonards NSW 2065 Australia Tel: (02) 9928 2100 Fax: (02) 9928 2500

PROJECT
MR182 - BRIDGE STREET WINDSOR WINDSOR BRIDGE REPLACEMENT UTILITIES, PAVEMENT AND GEOTECHNICAL INVESTGATIONS PLAN SHEET6

DRAWN BY	ISSUE DATE	SKETCH No	REV
CG	08.02.13	NB98005-SK-0026	D

SKETCH			
DRAWN BY	ISSUE DATE	SKETCH No	REV
CG	08.02.13	NB98005-SK-0026	D



LEGEND

FOR REFERENCE

- EXISTING PROPERTY BOUNDARY
- PROPOSED PROJECT BOUNDARY
- PROPOSED EASEMENT BOUNDARY
- RETAINING WALL

EXISTING UTILITIES TO BE RETAINED

- EU ELECTRICAL CONDUIT - UNDERGROUND
- S SEWER MAIN
- SR SEWER RISING MAIN
- SZ SEWER MAIN - DIGITISED
- T TELSTRA TELEPHONE LINE
- TC-T TELSTRA TELEPHONE CONDUIT
- OU-T TELSTRA OPTICAL FIBRE - UNDERGROUND
- W-S WATER MAIN - SYDNEY WATER
- WH WATER HOUSE CONNECTION
- LIGHT POLE
- EP / EGL ELECTRICAL LIGHT POLE
- ELECTRICAL JUNCTION BOX
- SINGLE CONCRETE PIT
- TWIN CONCRETE PIT
- TDP TELEPHONE DISTRIBUTION PILLAR
- POLE
- SUMP
- SEWER MANHOLE COVER
- HYDRANT
- STOP VALVE
- WATER METER
- WATER AIR VALVE

UTILITIES INVESTIGATION LOCATION

- WATER MAIN
- SEWER MAIN
- TELSTRA MAIN
- ELECTRICAL CABLES
- DIG SLOT FOR SERVICES

PAVEMENT TESTING LOCATION

- « %Sa a D5J9A9BH7CF9: CF 5GD: 5@H THICKNESS, TYPE & THICKNESS OF BASE, TYPE OF SUBGRADE (8 OF)
- « %Sa a D5J9A9BH7CF9'5G'56CJ9 PLUS CBR OF SUBGRADE (2 OF)

GEOTECHNICAL INVESTIGATION LOCATION

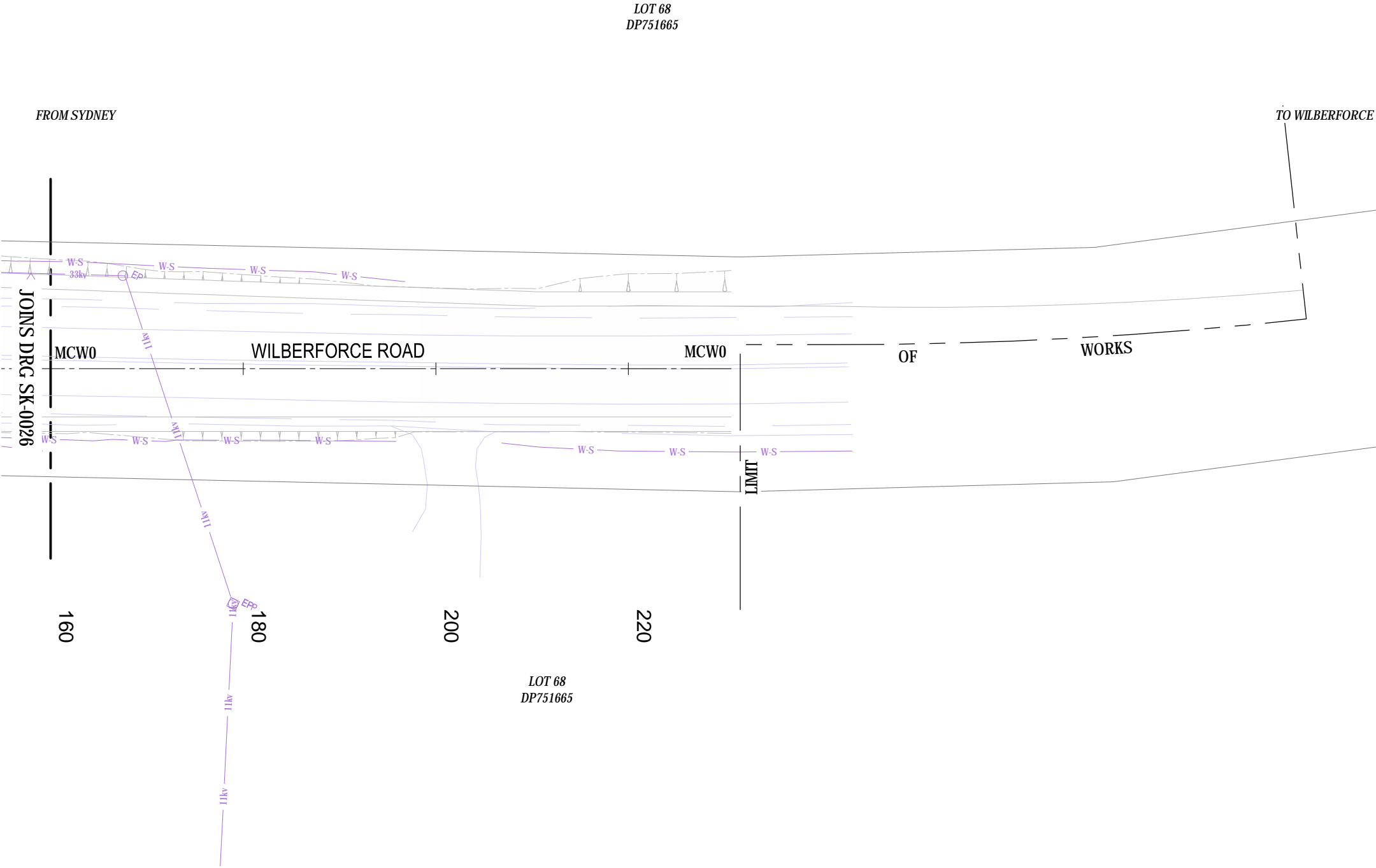
- OVERWATER SEDIMENT SAMPLING FOR A.S.S TESTING AND WASTE CLASSIFICATION
- BOREHOLES FOR WATER QUALITY BASIN SUB STRATA & SCOUR PROTECTION DESIGN

HERITAGE SITES

- ARCHEOLOGICAL DIGS

NOTES

- ALL ABOVE GROUND SERVICES HAVE BEEN OMITTED FOR CLARITY
- PRIOR TO COMMENCING ANY POTHOLING WORKS, LOCATION OF IDENTIFIED SERVICES TO BE FURTHER CONFIRMED BY LOCATORS



REV	DATE	DESCRIPTION	DRAWN	REVIEWED	APPROVAL
D	08.02.13	ISSUED FOR INFORMATION	CG	BDP	BDP
C	30.01.13	ISSUED FOR INFORMATION	CG	BDP	BDP
B	24.01.13	ISSUED FOR INFORMATION	CG	BDP	BDP
A	16.01.13	ISSUED FOR INFORMATION	CG	BDP	BDP

ORIGINAL DRAWING AT A3 SIZE
SCALE 1:500
CO-ORDINATE SYSTEM MGA Zone 96
HEIGHT DATUM: A.H.D.

DESIGN PARTNERS

Shardul Knight Meier Pty Ltd  
A.C.N. 001 024 095  
100 Christie Street  
St Leonards NSW 2065 Australia  
Tel: (02) 9928 2100 Fax: (02) 9928 2500

PROJECT

MR182 - BRIDGE STREET WINDSOR  
WINDSOR BRIDGE REPLACEMENT  
UTILITIES, PAVEMENT AND GEOTECHNICAL  
INVESTGATIONS PLAN  
SHEET7

SKETCH			
DRAWN BY	ISSUE DATE	SKETCH No	REV
CG	08.02.13	NB98005-SK-0027	D



HAWKESBURY RIVER

0  
LIMIT OF WORKS

20

40

60

80

LOT 7011  
DP1030959

JOINS DRG SK-0022

THE TERRACE

LIMIT OF WORKS

BAKER STREET

LOT 1  
DP542705

LOT B  
DP161643

LOT 1  
DP196531

LOT 1  
DP60716

LOT 1  
DP745036

THOMPSON SQUARE

LEGEND

FOR REFERENCE

- EXISTING PROPERTY BOUNDARY
- PROPOSED PROJECT BOUNDARY
- PROPOSED EASEMENT BOUNDARY
- RETAINING WALL

EXISTING UTILITIES TO BE RETAINED

- EU ELECTRICAL CONDUIT - UNDERGROUND
- S SEWER MAIN
- SR SEWER RISING MAIN
- SZ SEWER MAIN - DIGITISED
- T TELSTRA TELEPHONE LINE
- TC-T TELSTRA TELEPHONE CONDUIT
- OU-T TELSTRA OPTICAL FIBRE - UNDERGROUND
- W-S WATER MAIN - SYDNEY WATER
- WH WATER HOUSE CONNECTION
- LIGHT POLE
- ELECTRICAL LIGHT POLE
- EP / EGL ELECTRICAL POLE / ELECTRICAL GARDEN LIGHT
- ELECTRICAL JUNCTION BOX
- SINGLE CONCRETE PIT
- TWIN CONCRETE PIT
- TDP TELEPHONE DISTRIBUTION PILLAR
- POLE
- SUMP
- SEWER MANHOLE COVER
- HYDRANT
- STOP VALVE
- WATER METER
- WATER AIR VALVE

UTILITIES INVESTIGATION LOCATION

- WATER MAIN
- SEWER MAIN
- TELSTRA MAIN
- ELECTRICAL CABLES
- DIG SLOT FOR SERVICES

PAVEMENT TESTING LOCATION

- « % S a a T d J 9 A 9 B H 7 C F 9 : C F 5 G D : 5 @ H THICKNESS, TYPE & THICKNESS OF BASE, TYPE OF SUBGRADE (8 OF)
- « % S a a T d J 9 A 9 B H 7 C F 9 : 5 G : 5 6 C J 9 PLUS CBR OF SUBGRADE (2 OF)

GEOTECHNICAL INVESTIGATION LOCATION

- OVERWATER SEDIMENT SAMPLING FOR A.S.S TESTING AND WASTE CLASSIFICATION
- BOREHOLES FOR WATER QUALITY BASIN SUB STRATA & SCOUR PROTECTION DESIGN

HERITAGE SITES

- ARCHEOLOGICAL DIGS

NOTES

- ALL ABOVE GROUND SERVICES HAVE BEEN OMITTED FOR CLARITY
- PRIOR TO COMMENCING ANY POTHOLING WORKS, LOCATION OF IDENTIFIED SERVICES TO BE FURTHER CONFIRMED BY LOCATORS

DATE: 8/02/2013 12:58:15 PM LOGIN NAME: COMEZ, CLEO (SKM)  
LOCATION: F:\BHP\Projects\NB8005\Deliverables\Drawings\Civil\Sketches\NB8005-SK-0021-0028.dwg

REV	DATE	DESCRIPTION	DRAWN	REVIEWED	APPROVAL
D	08.02.13	ISSUED FOR INFORMATION	CG	BDP	BDP
C	30.01.13	ISSUED FOR INFORMATION	CG	BDP	BDP
B	24.01.13	ISSUED FOR INFORMATION	CG	BDP	BDP
A	16.01.13	ISSUED FOR INFORMATION	CG	BDP	BDP

ORIGINAL DRAWING AT A3 SIZE
SCALE 1:500
5 0 5 10 AT A3
CO-ORDINATE SYSTEM MGA Zone 96
HEIGHT DATUM: A.H.D.


DESIGN PARTNERS
<b>SKM</b>
Sheldale Knight Moxey Pty Ltd A.C.N. 101 024 095 100 Christie Street St Leonards NSW 2065 Australia Tel: (02) 9928 2100 Fax (02) 9928 2500

PROJECT
MR182 - BRIDGE STREET WINDSOR WINDSOR BRIDGE REPLACEMENT UTILITIES, PAVEMENT AND GEOTECHNICAL INVESTIGATIONS PLAN SHEET8

SKETCH			
DRAWN BY	ISSUE DATE	SKETCH No	REV
CG	08.02.13	NB98005-SK-0028	D



(blank page)