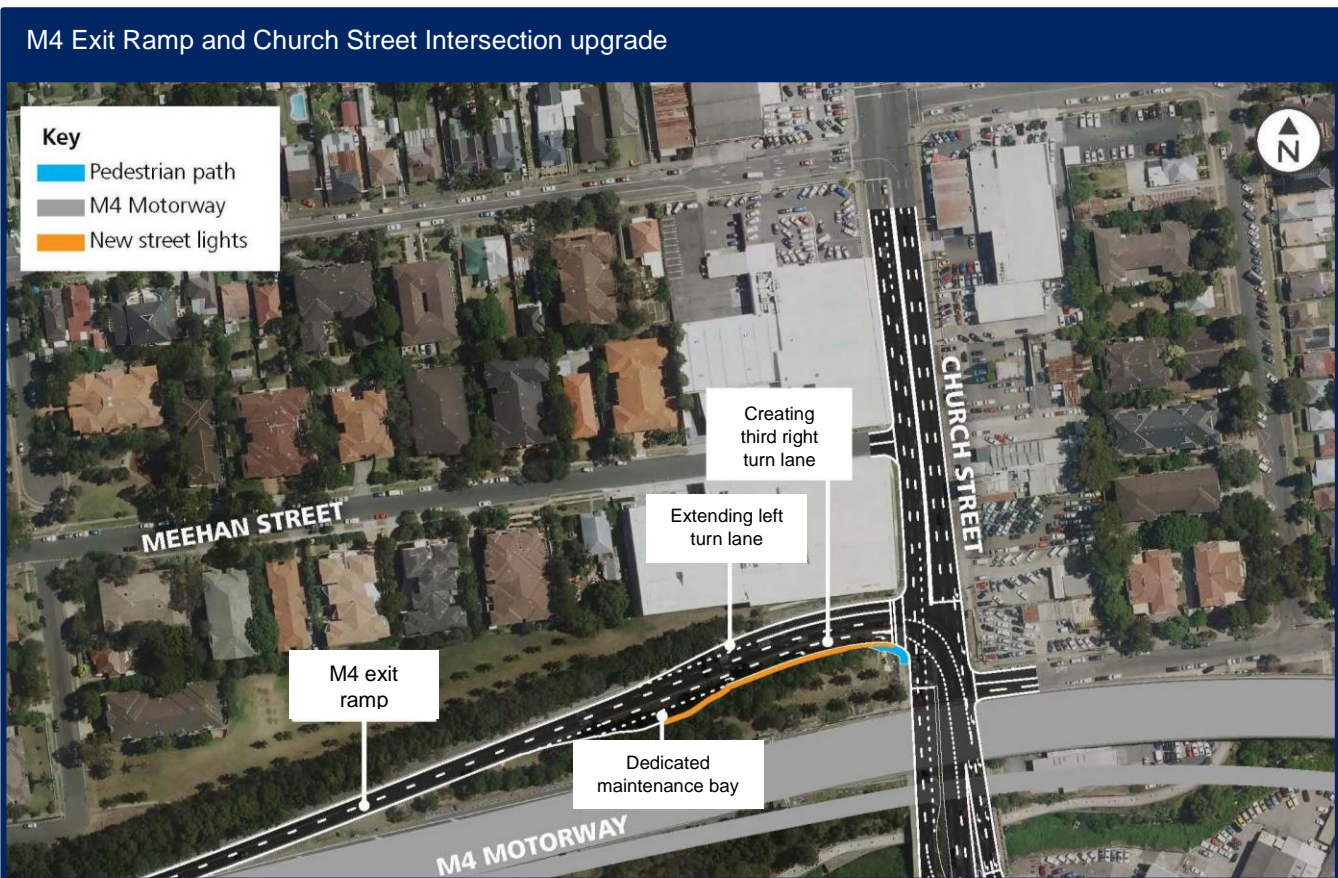


Work starting on M4 Exit Ramp in Granville from 11 June

The NSW Government is funding this work as part of its \$30 million Parramatta Congestion Improvement Program to address congestion by improving traffic flow in Parramatta and surrounding areas.



Roads and Maritime is upgrading the M4 motorway off ramp at Church Street in Granville. This upgrade will include:

- extending the left turn lane from the exit ramp onto Church Street for Parramatta bound traffic
- creating a third right turn lane from the exit ramp onto Church Street before Woodville Road and Parramatta Road bound traffic.

Our work schedule

We will be on site between **11 June 2019** and **20 December 2019**, weather permitting, excluding public holidays.

Our night work hours will be between **10pm** and **4am** from **Sunday to Thursday, Friday between midnight and 5am**, and between **midnight and 8am on Saturday**.

These hours may change as the work progresses and we will update the community before that happens.

Contact

If you have feedback or concerns about the work schedule, or would like to know more about this project, please contact the project team on **1800 316 763** or **PCIP@rms.nsw.gov.au**

To learn more about the Parramatta Congestion Improvement Program, visit rms.work/pcip.

Thank you for your patience during this important work.

Community benefits

The project will:

- improve traffic flow for Church Street bound motorists with the extended left turn lane
- improve traffic flow for Woodville Road and Parramatta Road bound motorists with the added right turn lane
- ease congestion and increase safety for M4 users with more motorists able to exit easier and through traffic can continue their trips with less risky manoeuvres.

How will the work affect you?

Our work may be noisy at times. However, we will do everything we can to minimise its impact, including completing noisier activities by **midnight**.

Tree and vegetation removal

We will need to remove some vegetation and trees from land along the M4 exit ramp to extend the left turn lane. In line with the environmental approval for the project, a qualified ecologist will carry out an assessment and recommend mitigation measures for the removal of any trees or vegetation.

Traffic changes

There may be temporary traffic changes during our work hours to ensure the work zone is safe. Lane closures will be in place and may affect travel times. Please keep to speed limits and follow signs and traffic controllers' directions. For the latest traffic updates, you can call 132 701, visit [livetraffic.com](https://www.livetraffic.com) or download the Live Traffic NSW App.



If you need help understanding this information, please contact the Translating and Interpreting Service on 131 450 and ask them to call us on 1800 361 763.