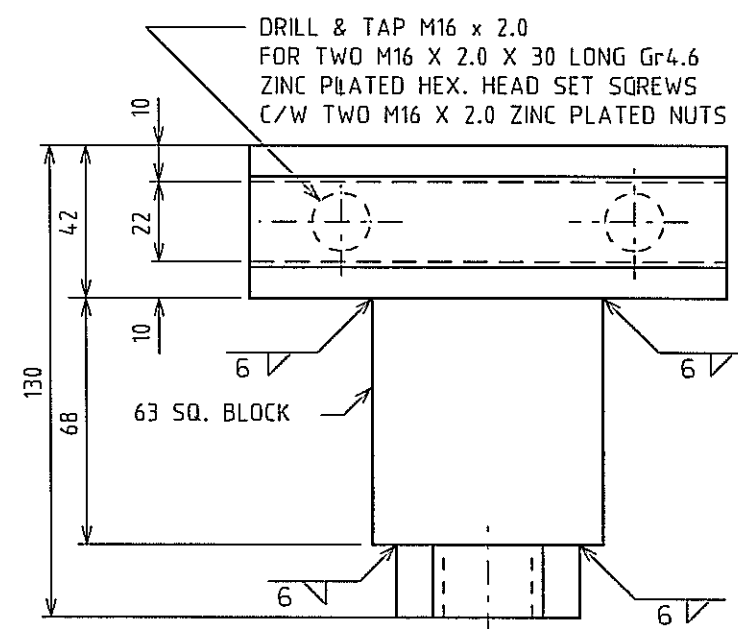
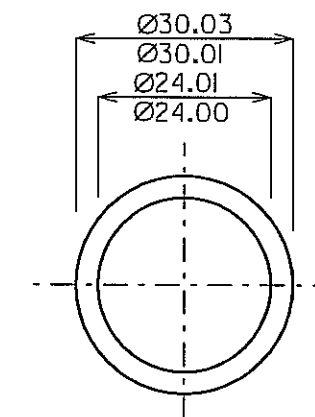
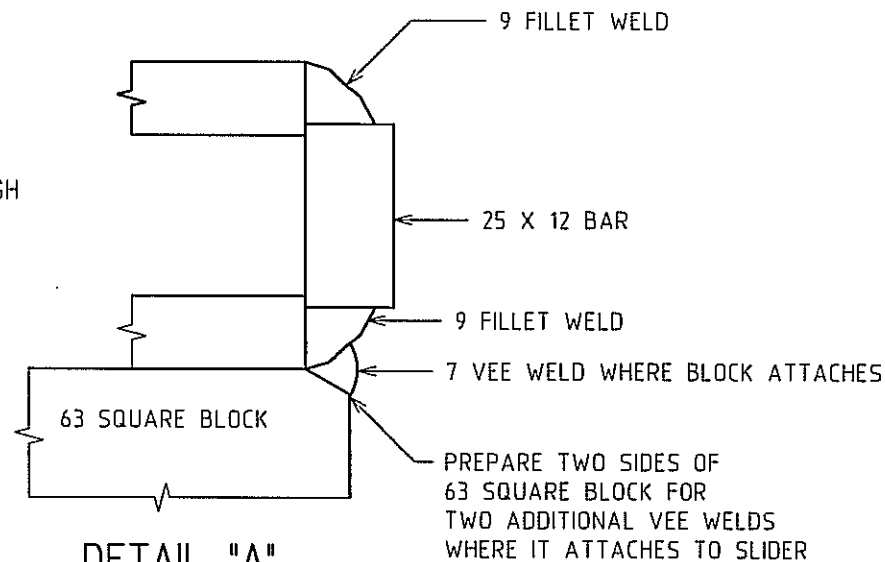


TEE CRANK SLIDER PLAN



TEE CRANK SLIDER ELEVATION

MATERIAL: AS3679-250
FINISH: 1 COAT OF R.O.Z.P.



BUSH DETAILS

BUSH 20 LONG
MATERIAL AS3678-250
CASE HARDEN 58-60 ROCKWELL C

NOTES:

- 1) ALL WELDS SHALL BE TO AS1554.1 SP. THE WELD METAL SHALL HAVE A MINIMUM NOMINAL TENSILE STRENGTH, F_{uW} OF 450MPa.
- 2) HOT DIP GALVANISING SHALL BE TO AS1650. MINIMUM COATING SHALL BE 2430 FOR SHEET PRODUCTS OR 450 g/m² FOR OTHER PRODUCTS.
- 3) ZINC PLATING SHALL BE TO AS1769 AS APPROPRIATE, Fe/Zn 12cC.
- 4) ALL SURFACES TO BE PAINTED SHALL BE DEGREASED, DESCALED AND PREPARED IN ACCORDANCE WITH THE PAINT MANUFACTURER'S RECOMMENDATIONS. EACH COAT OF PAINT SHALL HAVE A MINIMUM DRY FILM THICKNESS OF 38µm.
- 5) PROPRIETARY ITEMS SHALL BE MANUFACTURED TO RELEVANT AUSTRALIAN STANDARDS.
- 6) THE MANUFACTURER OR ITS SUPPLIERS SHALL KEEP AND HAVE AVAILABLE TEST CERTIFICATES FOR MATERIALS, HEAT TREATMENT, HARDENING AND SURFACE COATINGS.
- 7) PARTS SHALL BE MARKED WHERE SHOWN WITH PART NUMBER AND XXXMMYY WHERE XXX = MANUFACTURER'S MARK AND MMYY = MONTH & YEAR OF MANUFACTURE.
- 8) WHERE AN ASSEMBLY IS ORDERED THE MANUFACTURER SHALL SUPPLY IT COMPLETE AND FULLY ASSEMBLED AS SHOWN UNLESS REQUESTED OTHERWISE. THE ASSEMBLY SHALL HAVE A WEATHERPROOF TAG ATTACHED, MARKED WITH THE ASSEMBLY PART NUMBER AND XXXMMYY AS ABOVE.
- 9) THREADED SURFACES NOT PROTECTED BY PLATING SHALL BE COATED WITH ROCOL RUSTSHIELD OR AN EQUIVALENT ALTERNATIVE.
- 10) BEARING SURFACES NOT PROTECTED BY PLATING SHALL BE COATED WITH ROCOL A.S. SPRAY OR AN EQUIVALENT ALTERNATIVE.

STOCK CODE 1775816

VERSION		DESCRIPTION		DATE	DRAWN	REVIEWED	VERIFIED	APPROVED	<p>GENERAL TOLERANCES</p> <p>LINEAR:</p> <p>< 1000 ±0.5mm</p> <p>≥ 1000 ±3mm</p> <p>RADIAL:</p> <p>< 500 ± 0.25mm</p> <p>≥ 500 ± 1.5mm</p> <p>ANGULAR: 30'</p>		<p>RailCorp</p> <p>INFRASTRUCTURE GROUP</p> <p>Engineering Standards & Services Division</p>		<p>TITLE</p> <p>TANGENTIAL TURNOUT</p> <p>TEE CRANK BACK DRIVE SLIDER DETAILS</p>			
DESIGNED R.F.		DRAWN H.E.		REVIEWED RLF		VERIFIED RLF		APPROVED [Signature]		<p>SIGNAL DESIGN</p> <p>cad DO NOT AMEND MANUALLY</p>		<p>DATE 27/05/05</p> <p>SCALE N.T.S</p>		<p>DRG. No. M02-629</p> <p>REV. No. 0</p> <p>A3</p>		

This drawing and the information contained thereon have been created solely for a particular purpose and client. This is protected by copyright. You may not reproduce any of it in any form without the written permission of Rail Corporation New South Wales. If you do, you may have to pay damages to Rail Infrastructure Corporation or you may be prosecuted.

© ALL DIMENSIONS IN MILLIMETRES

AS 1100 THIRD ANGLE PROJECTION