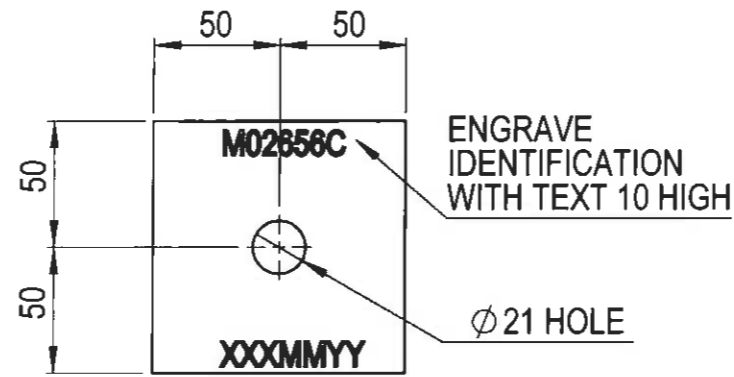


**INSULATING PLATE TO GO UNDER MOTOR BASEPLATE**  
 PART NUMBER: M02656A  
 MATERIAL: BLACK HDPE 5 THICK  
 M3A MACHINE REQUIRES 3 PADS  
 ALL OTHERS REQUIRE 4 PADS

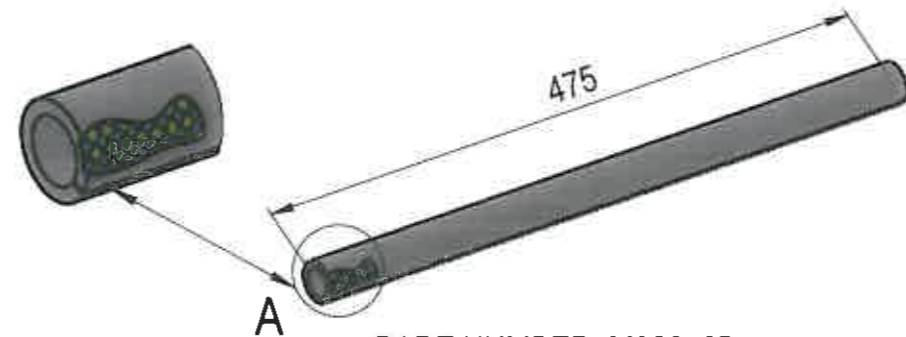
NOTE: EQUIVALENT TO VAE  
 DWG VAM13575 ITEM 7.

NOTES:

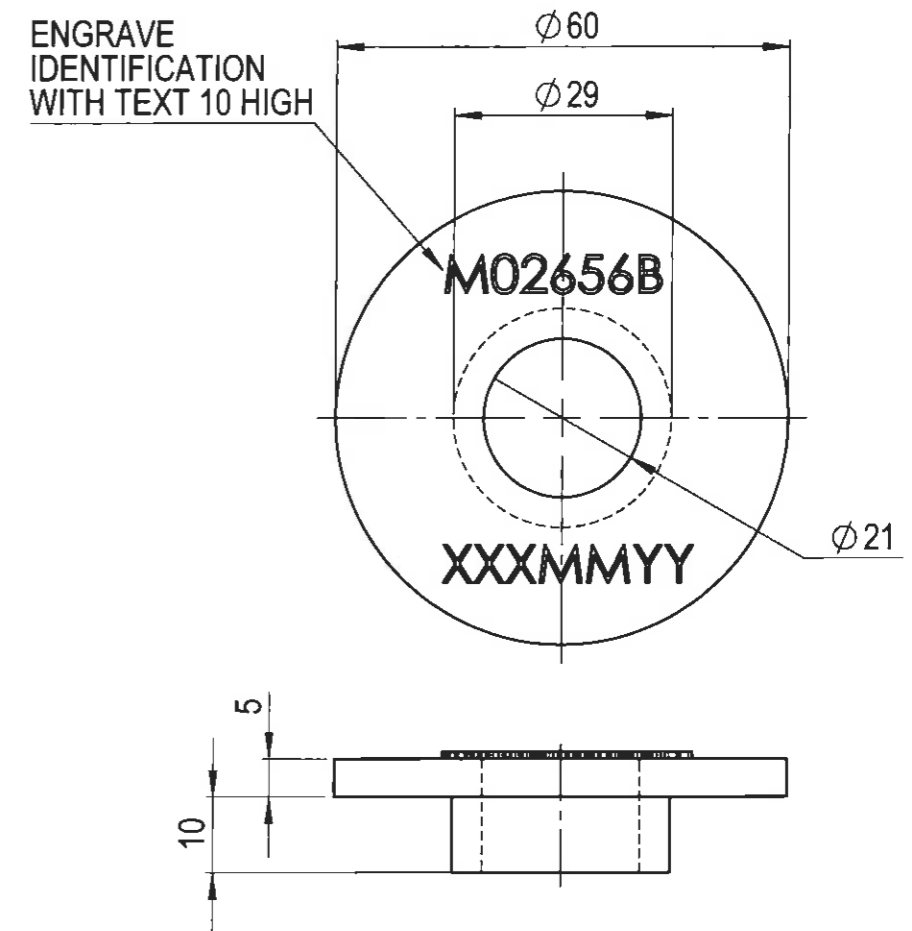
- 1) ALL WELDS SHALL BE TO AS1554.1 SP. THE WELD METAL SHALL HAVE A MINIMUM NOMINAL TENSILE STRENGTH, FUW OF 450MPa.
- 2) HOT DIP GALVANISING SHALL BE TO AS1650. MIN. COATING SHALL BE Z430 FOR SHEET PRODUCTS OR 450g/m<sup>2</sup> FOR OTHER PRODUCTS.
- 3) ZINC PLATING SHALL BE TO AS1769 AS APPROPRIATE, Fe/Zn 12Cc.
- 4) ALL SURFACES TO BE PAINTED SHALL BE DEGREASED, DESCALED AND PREPARED IN ACCORDANCE WITH THE PAINT MANUFACTURER'S RECOMMENDATIONS. EACH COAT OF PAINT SHALL HAVE A MINIMUM DRY FILM THICKNESS OF 38µm.



**INBEARER SQUARE INSULATION PAD**  
 PART NUMBER: M02656C  
 MATERIAL: BLACK HDPE 5 THICK  
 M3A MACHINE REQUIRES 2 PADS  
 ALL OTHERS REQUIRE NONE



**PART NUMBER: M02656D**  
 MATERIAL: SUPER ULTRAFLEX AS/NZ2554 HOSE  
 CLASS B AND SIZE IS ID: 20 & OD: 29  
 NOTE: OPEN ONE SIDE ALONG SUPER ULTRAFLEX HOSE FROM BARFELL, 4 OFF REQUIRED FOR FRONT INBEARERS



**INSULATING TOP HATS FOR MOTOR BASEPLATE**  
 PART NUMBER: M02656B  
 MATERIAL: WHITE NYLON  
 8 OFF REQUIRED PER INBEARER MOTOR MOUNTING PLATE  
 NOTE: EQUIVALENT TO VAE  
 DWG VAM13575 ITEM 11 & 12

- 5) PROPRIETARY ITEMS SHALL BE MANUFACTURED TO RELEVANT AUSTRALIAN STANDARDS.
- 6) THE MANUFACTURER OR ITS SUPPLIERS SHALL KEEP AND HAVE AVAILABLE TEST CERTIFICATES FOR MATERIALS, HEAT TREATMENT, HARDENING AND SURFACE COATINGS.
- 7) PARTS SHALL BE MARKED WHERE SHOWN WITH PART NUMBER AND XXXMMYY WHERE XXX=MANUFACTURER'S MARK AND MYY=MONTH AND YEAR OF MANUFACTURE.

- 8) WHERE AN ASSEMBLY IS ORDERED THE MANUFACTURER SHALL SUPPLY IT COMPLETE AND FULLY ASSEMBLED AS SHOWN UNLESS REQUESTED OTHERWISE. THE ASSEMBLY SHALL HAVE A WEATHERPROOF TAG ATTACHED, MARKED WITH THE ASSEMBLY PART NUMBER AND XXXMMYY AS ABOVE.
- 9) THREADED SURFACES NOT PROTECTED BY PLATING SHALL BE COATED WITH ROCOL RUSTSHIELD OR AN EQUIVALENT ALTERNATIVE.
- 10) BEARING SURFACES NOT PROTECTED BY PLATING SHALL BE COATED WITH ROCOL A.S. SPRAY OR AN EQUIVALENT ALTERNATIVE.

GENERAL TOLERANCES	
LINEAR	< 1000 : 0.5mm
	> 1000 : 3mm
RADIAL	< 500 : 0.25mm
	> 500 : 1.5mm
ANGULAR	: 30'

**RailCorp**  
 SIGNALS  
 Chief Engineer's Division

TITLE: **MOTOR MOUNTING PLATE INSULATION ON INBEARER SLEEPERS INSULATION DETAILS**

VERSION	DESCRIPTION	DATE	DRAWN	REVIEWED	VERIFIED	APPROVED
1	DRAWING UPDATED TO SOLIDWORKS FORMAT	26/3/12	C.Y.L.	<i>[Signature]</i>	<i>[Signature]</i>	<i>[Signature]</i>

This drawing and the information contained thereon have been created solely for a particular purpose and client. This is protected by copyright. You may not reproduce any of it in any form without the written permission of Rail Corporation New South Wales. If you do, you may have to pay damages to Rail Corporation New South Wales or you may be prosecuted.

© ALL DIMENSIONS IN MILLIMETRES

AS 1100

CAD DO NOT AMEND MANUALLY

DESIGNED	DRAWN	REVIEWED	VERIFIED	APPROVED
R.F.	R.F.	R.L.F.	C.Y.L.	R.W.A.
DATE	SCALE	DWG No	REV No	
26/03/2012	N. T. S.	M02-656	1	A3