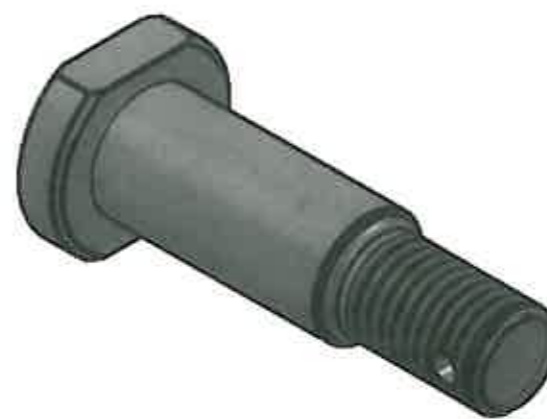
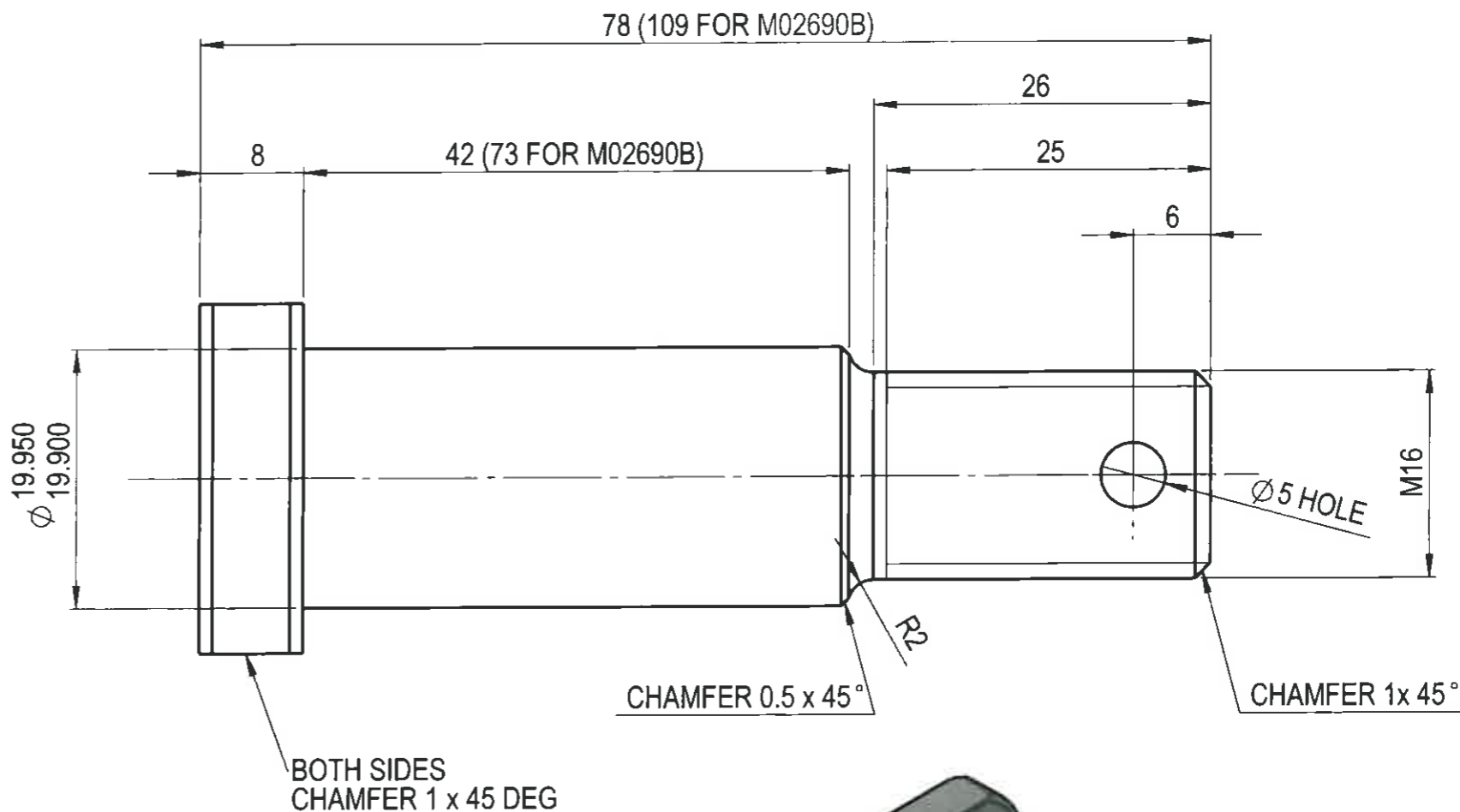
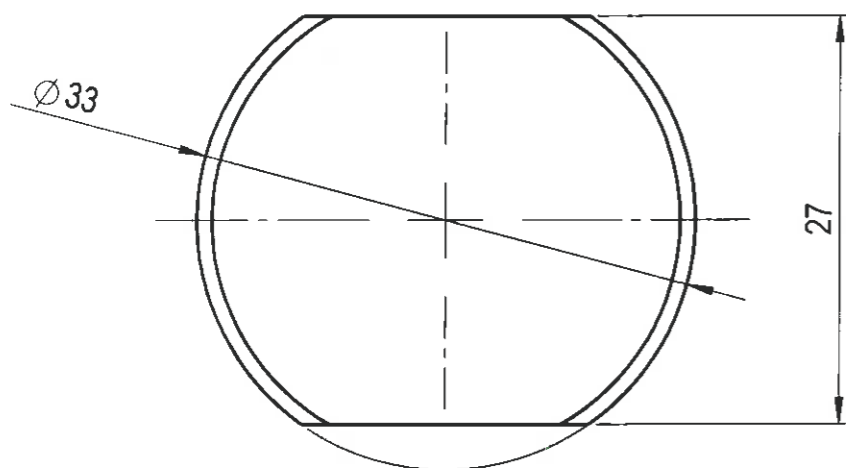


VIEW A



NOTE:
 DESIGN PART NUMBER: M02690A/M02690B
 MATERIAL: FREE MACHINING STEEL S1214
 FINISH: CASE HARDEN TO ROCKWELL C20-24, ZINC PLATE.
 ALL MACHINED SURFACE FINISH REQUIRED 3.2
 ASSOCIATED COMPONENT USED FOR SPHEROLOCK:
 ONE M16 FLAT WASHER, ZINC PLATED (BLACKWOODS: 0034 3806)
 ONE M16 NYLOC NUT, ZINC PLATED (BLACKWOODS: 0209 3808)
 ONE M5 x 50 LONG PIN COTTER(SPLIT PIN), ZINC PLATED (BLACKWOODS: 0153 7501)
 PART M02690B IS USED IN TANGENTIAL CATCHPOINT LAYOUT AND THE BODY LENGTH WILL BE CHANGED FROM 42 TO 73.

GENERAL TOLERANCES	
LINEAR	< 1000 ± 0.5mm
> 1000	± 3mm
RADIAL	< 500 ± 0.25mm
> 500	± 1.5mm
ANGULAR	± 30'

RailCorp
 SIGNALS
 Chief Engineering's Division

TITLE PIN 70 LONG(DIA 20, THREADED M16)

VERSION	DESCRIPTION	DATE	DRAWN	REVIEWED	VERIFIED	APPROVED
2	DIMENSION 78 UPDATED	09/1/12	C.Liang	C.Liang	R.L.F.	Paul Sz.
1	NEW PART M02690B ADDED	23/8/10	C.Liang	C.Liang	R.L.F.	Paul Sz.

DESIGNED	DRAWN	REVIEWED	VERIFIED	APPROVED
C. Liang	C. Liang	R.L.F.	A.N.	R.W.A.
DATE	SCALE	DRG. No.	REV. No.	
19/04/2010	N. T. S.	M02-690	2	A3

CAD DO NOT AMEND MANUALLY

This drawing and the information contained thereon have been created solely for a particular purpose and client. This is protected by copyright. You may not reproduce any of it in any form without the written permission of Rail Corporation New South Wales. If you do, you may have to pay damages to Rail Corporation New South Wales or you may be prosecuted.

© ALL DIMENSIONS IN MILLIMETRES
 AS 1100
 THIRD ANGLE PROJECTION