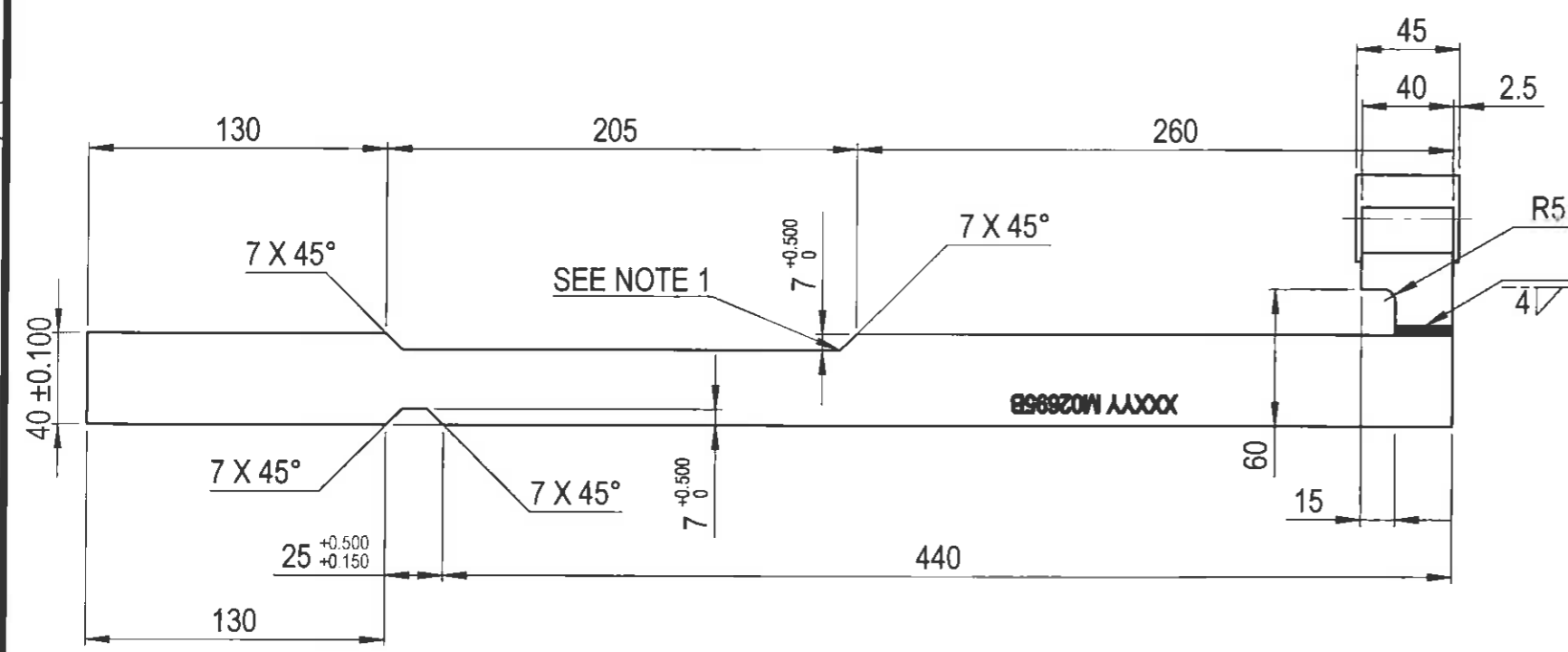
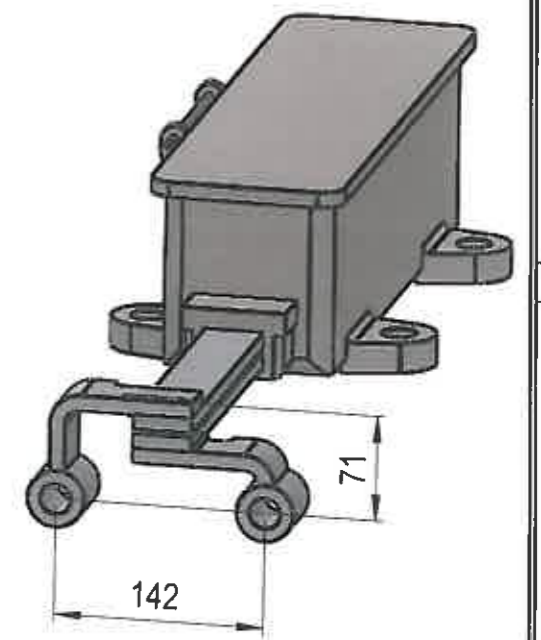
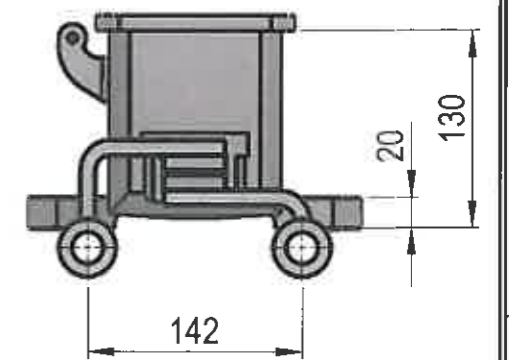
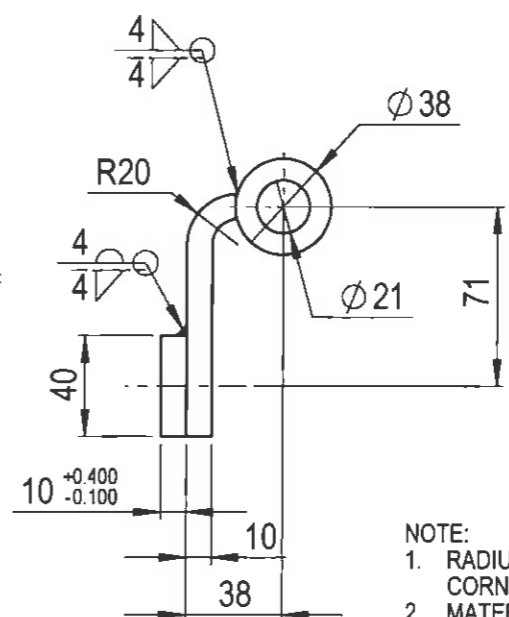
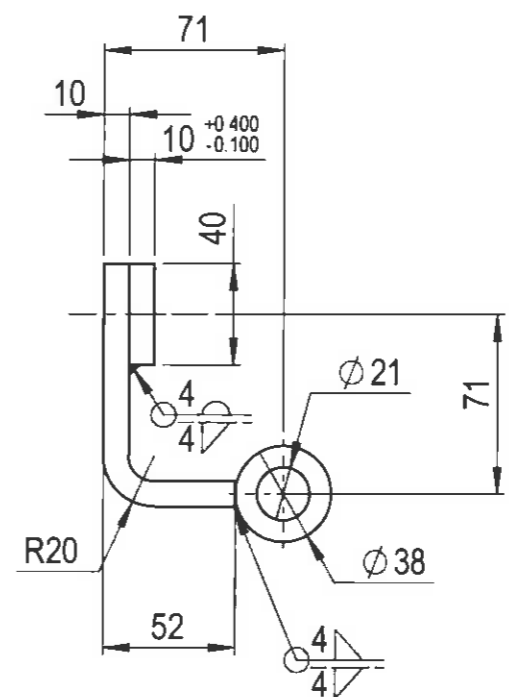


**TOP SLIDE BAR DETAILS**

NOTE: TOTAL LENGTH OF EACH BAR IS 595MM

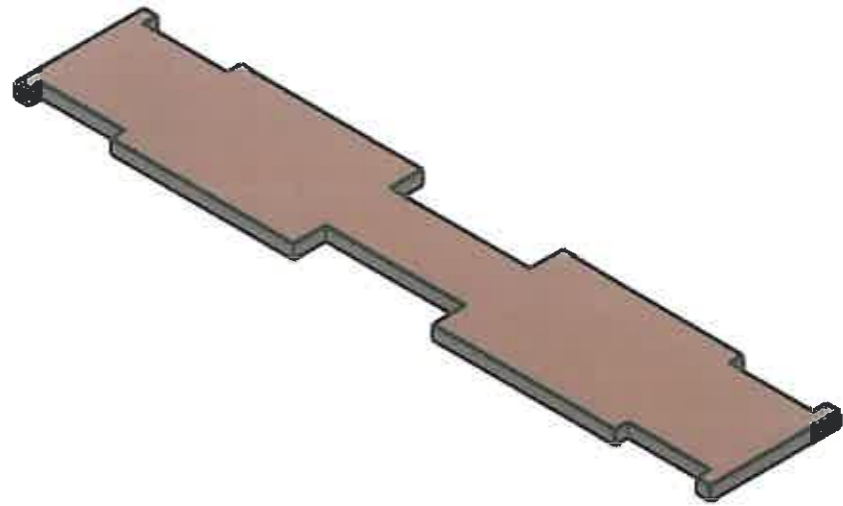
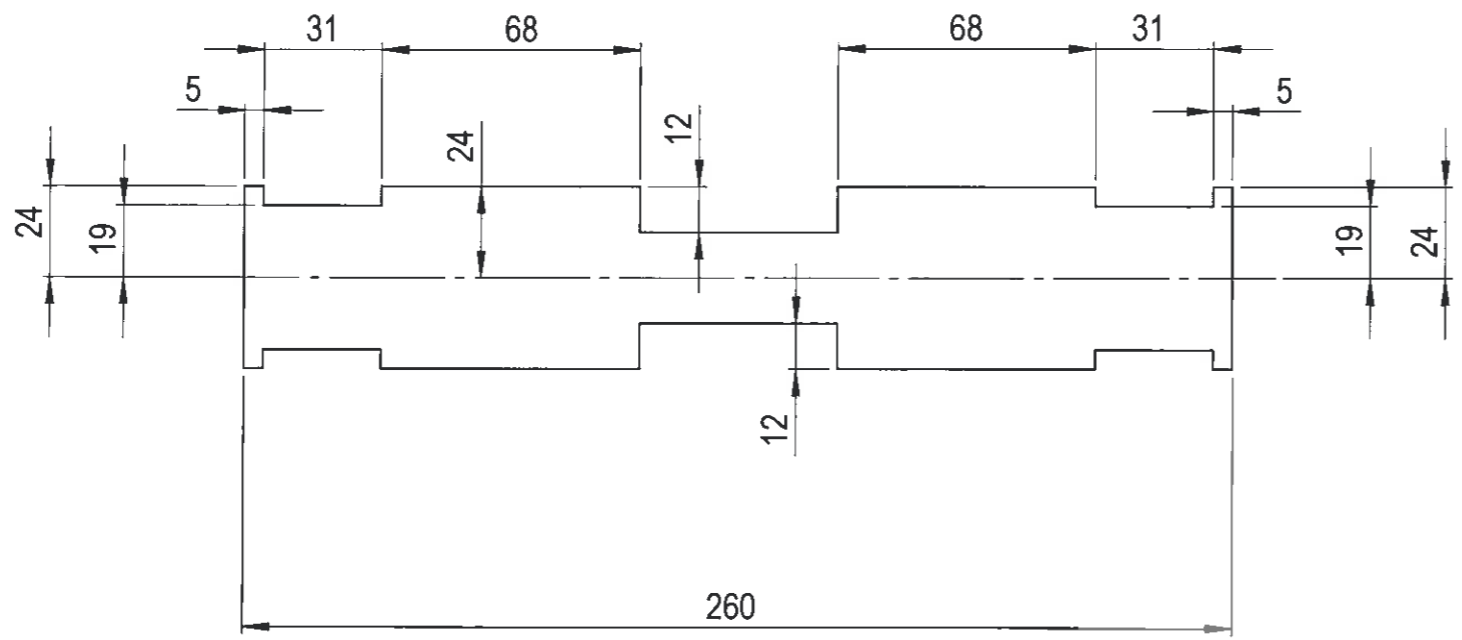


**BOTTOM SLIDE BAR DETAILS**



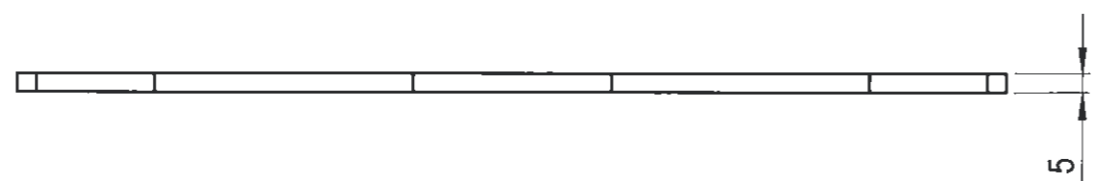
- NOTE:
1. RADIUS NOT EXCEEDING 10MM IS ACCEPTABLE ON INSIDE CORNERS OF SLOTS.
  2. MATERIAL THICKNESS TOLERANCE MUST BE MAINTAINED FOR SLIDE BAR. UNDERSIZED MATERIAL IS NOT ACCEPTABLE. IF MATERIAL IS MACHINED MACHINING MUST BE DONE ON BOTH SIDES OF OVERSIZED DIMENSION.
  3. ALTERNATIVE MATERIAL AND FINISH IS BRIGHT MILD STEEL ELECTROLYSED NICKEL PLATED 0.025 THICK HEAT TREATED TO 62 R.C. MINIMUM.

<p>1 SLIDING BARS UPDATED TO SUIT INDEPENDENT POINT AND SEPERATING PLATE ADDED 26/04/12 C.Y.L. <i>C.L.</i> <i>R.L.F.</i> <i>R.W.A.</i></p>							<p>GENERAL TOLERANCES          LINEAR          &lt;1000 +0.5mm          &gt;1000 +3mm          RADIAL          &lt;500 +0.25mm          &gt;500 +1.5mm          ANGULAR +30°</p>		<p><b>RailCorp</b>          SIGNALS          Chief Engineer's Division</p>		<p>TITLE  <b>INVENSYS HMX DETECTOR USED TO SUIT INDEPENDENT POINT 522A/524A IN HORNSBY FOR 180 TRAVEL - MODIFIED DETAILS</b></p>			
VERSION	DESCRIPTION	DATE	DRAWN	REVIEWED	VERIFIED	APPROVED	SIGNAL DESIGN	EDMS: SG0407778	DESIGNED <b>C. Liang</b>	DRAWN <b>C. Liang</b>	REVIEWED <b>R.L.F.</b>	VERIFIED <b>A.N.</b>	APPROVED <b>R.W.A.</b>	
<p>This drawing and the information contained thereon have been created solely for a particular purpose and client. This is protected by copyright. You may not reproduce any of it in any form without the written permission of Rail Corporation New South Wales. If you do, you may have to pay damages to Rail Corporation New South Wales or you may be prosecuted.</p>							<p>ALL DIMENSIONS IN MILLIMETRES</p>		<p>AS 1100          THIRD ANGLE PROJECTION</p>		<p><b>CAD DO NOT AMEND MANUALLY</b></p>			
							DATE <b>16/01/2012</b>	SCALE <b>N. T. S.</b>	DRG No <b>M02-695</b>	SHEET 1 OF 2	REV No <b>1</b>	<p><b>A3</b></p>		



**SEPERATING PLATE**

PART NUMBER: M02695C  
 MATERIAL: PHOSPHOR BRONZE PLATE  
 (BRONZE ALLOY 510) 5MM THICK,  
 AUSTRAL WRIGHT METALS  
 FINISH: REMOVE ALL SHARP EDGES



GENERAL TOLERANCES	
LINEAR:	
<1000	+ 0.5mm
>1000	+ 3mm
RADIAL	
<500	+ 0.25mm
>500	+ 1.5mm
ANGULAR:	+ 30'

**RailCorp**  
 SIGNALS  
 Chief Engineer's Division

TITLE **COPPER SEPERATING PLATE FOR HMX DETECTOR**

VERSION	DESCRIPTION	DATE	DRAWN	REVIEWED	VERIFIED	APPROVED

SIGNAL DESIGN  
**CAD DO NOT AMEND MANUALLY**

DESIGNED <b>C. Liang</b>	DRAWN <b>C. Liang</b>	REVIEWED <i>RLF</i>	VERIFIED <i>[Signature]</i>	APPROVED <i>[Signature]</i>
DATE <b>12/06/2012</b>	SCALE <b>N. T. S.</b>	DRG No <b>M02-695</b>	SHEET 2 OF 2	REV No <b>0</b>

This drawing and the information contained thereon have been created solely for a particular purpose and client. This is protected by copyright. You may not reproduce any of it in any form without the written permission of Rail Corporation New South Wales. If you do, you may have to pay damages to Rail Corporation New South Wales or you may be prosecuted.

© ALL DIMENSIONS IN MILLIMETRES  
 AS 1100  
 THIRD ANGLE PROJECTION