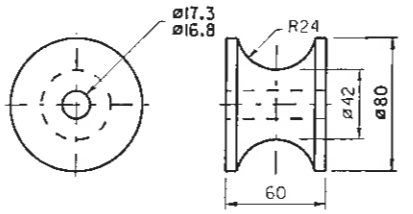
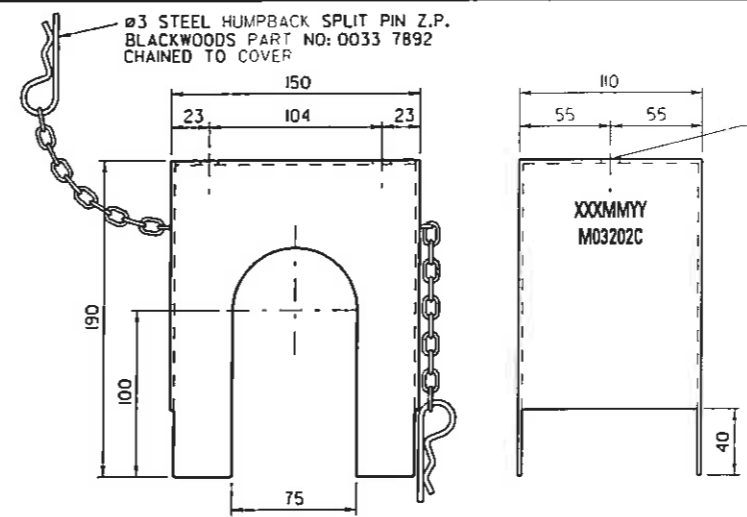


1 ROLLER STAND
MATL: AS3678-250
FINISH: HOT DIP GAL

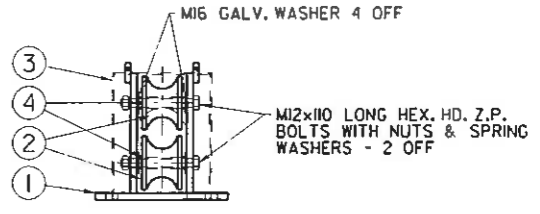
4 SPACER
MATL: 16 O.D. x 1.6 BRIGHT STEEL TUBE
FINISH: ZINC PLATE



2 WHEELS
MATL: MONOMER CAST NYLON



3 COVER
MATL: AS3678-250 2.4R
FINISH: HOT DIP GAL

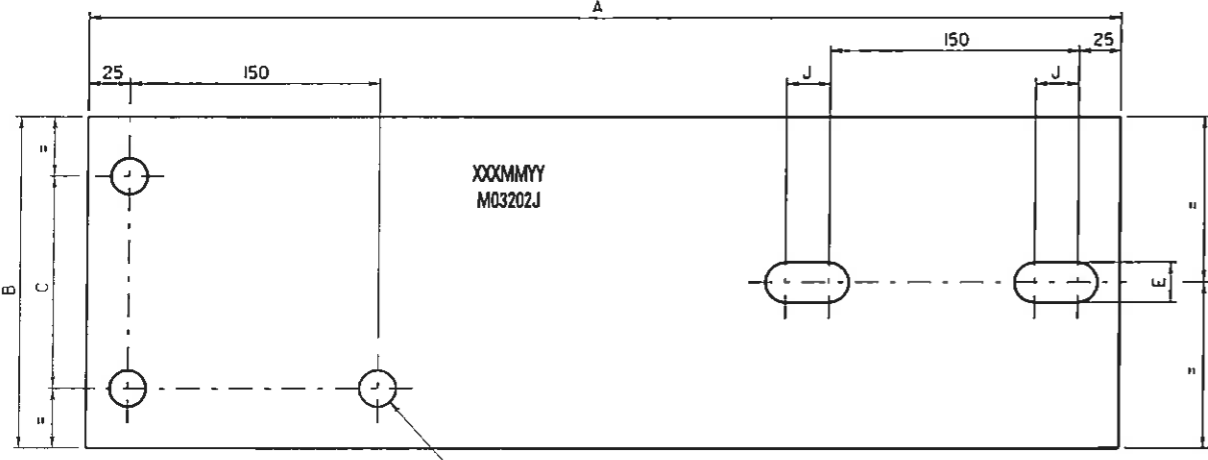


6 ROLLER STAND ASSEMBLY
M03203F

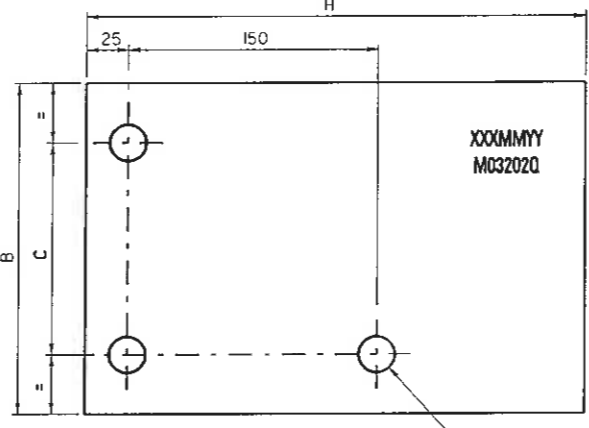
SLEEPERS	PART No.s	A	B	C	D	E	F	G	H	J
BULLIAC	M03203K	620	200	128	26	24	50	470	-	26
CONCRETE & STEEL	M03203G & D	455	200	128	22	24	12	310	140	26
CONCRETE	M03203H	490	200	128	22	24	25	310	-	26
TIMBER	M03203J & R	620	100	40	18	18	20	270	310	26
STEEL	M03203S	550	200	128	22	24	12	405	140	55

12 INSULATION FERULE
MATL: POLYOLEFIN

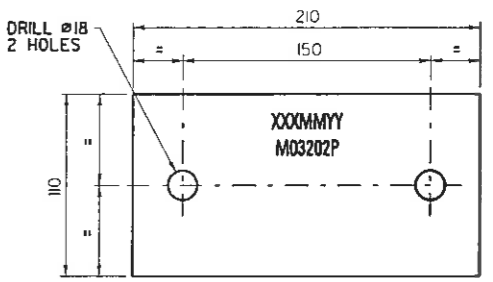
13 WASHER PLATE
MATL: ZINCANNEAL I.G.R.



7 ROLLER STAND BASE PLATE
MATL: AS3678-250
FINISH: HOT DIP GAL



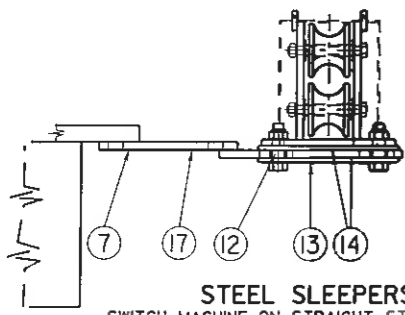
15 SHIM PACKING PLATE
MATL: AS3678-250 3R
FINISH: HOT DIP GAL
QUANTITY AS REQUIRED



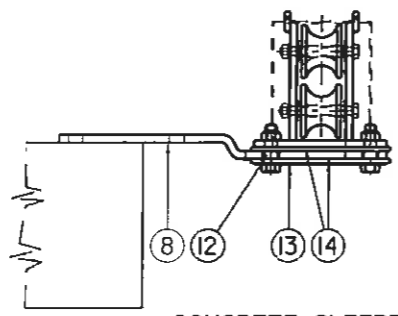
14 INSULATION PLATE
MATL: POLYOLEFIN 6R

11 INSULATION SET - M03203L
SET COMPRISES TWO OFF ITEMS 12 & 14, ONE OFF ITEM 13, TWO OFF M16x60 ZINC PLATED HEX BOLTS AND TWO M16 ZINC PLATED NYLOC NUTS.
SUPPLY SET PACKAGED AND LABELLED AS PER NOTE 8.

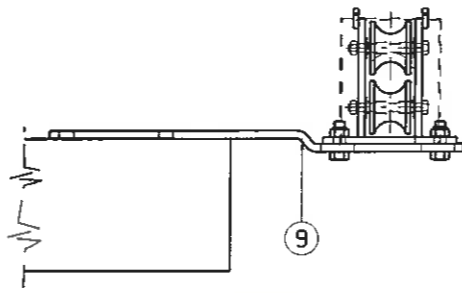
- NOTES:**
- ALL WELDS SHALL BE TO AS1554.1 SP. THE WELD METAL SHALL HAVE A MINIMUM NOMINAL TENSILE STRENGTH, f_u OF 450MPa.
 - HOT DIP GALVANISING SHALL BE TO AS1650. MINIMUM COATING SHALL BE 2430 FOR SHEET PRODUCTS OR 450 g/m² FOR OTHER PRODUCTS.
 - ZINC PLATING SHALL BE TO AS1769 AS APPROPRIATE. Fe/Zn 120C.
 - ALL SURFACES TO BE PAINTED SHALL BE DEGREASED AND PREPARED IN ACCORDANCE WITH THE PAINT MANUFACTURER'S RECOMMENDATIONS. EACH COAT OF PAINT SHALL HAVE A MINIMUM DRY FILM THICKNESS OF 35µm.
 - PROPRIETARY ITEMS SHALL BE MANUFACTURED TO RELEVANT AUSTRALIAN STANDARDS.
 - THE MANUFACTURER OR ITS SUPPLIERS SHALL KEEP AND HAVE AVAILABLE TEST CERTIFICATES FOR MATERIALS, HEAT TREATMENT, HARDENING AND SURFACE COATINGS.
 - PARTS SHALL BE MARKED WHERE SHOWN WITH PART NUMBER AND XXXMMY WHERE XXX = MANUFACTURER'S MARK AND MMY = MONTH & YEAR OF MANUFACTURE.
 - WHERE AN ASSEMBLY IS ORDERED THE MANUFACTURER SHALL SUPPLY IT COMPLETE AND FULLY ASSEMBLED AS SHOWN UNLESS REQUESTED OTHERWISE. THE ASSEMBLY SHALL HAVE A WEATHERPROOF TAG ATTACHED, MARKED WITH THE ASSEMBLY PART NUMBER AND XXXMMY AS ABOVE.
 - THREADED SURFACES NOT PROTECTED BY PLATING SHALL BE COATED WITH ROCOL RUSTSHIELD OR AN EQUIVALENT ALTERNATIVE.
 - BEARING SURFACES NOT PROTECTED BY PLATING SHALL BE COATED WITH ROCOL A.S. SPRAY OR AN EQUIVALENT ALTERNATIVE.



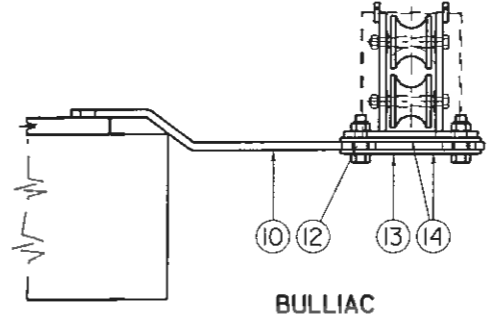
STEEL SLEEPERS
SWITCH MACHINE ON STRAIGHT STOCKRAIL SIDE
STEEL & CONCRETE SLEEPERS
SWITCH MACHINE ON CURVED STOCKRAIL SIDE



CONCRETE SLEEPERS
SWITCH MACHINE ON STRAIGHT STOCKRAIL SIDE



TIMBER SLEEPERS



BULLIAC

GENERAL TOLERANCES
LINEAR:
< 1000 ±0.5mm
≥ 1000 ±3mm
RADIAL:
< 500 ±0.25mm
≥ 500 ±1.5mm
ANGULAR: 30'

RailCorp
SIGNALS
Engineering Standards & Services Division

TITLE
BACK DRIVE COMPONENTS
50Kg OR 60 Kg 9150 SWITCHES

VERSION	DESCRIPTION	DATE	DRAWN	REVIEWED	VERIFIED	APPROVED
1	UPDATED ORIGINAL DWG WITH VERSIONS A-E (A: BASE PLATE HOLES REDUCED TO 18 DIA. B: ITEM 3 CLEARANCE SLOT INCREASED FROM 55 TO 75. ITEM 7 INCREASED IN LENGTH FROM 575 TO 600. SLEEPER BOLT HOLES SPACING INCREASED FROM 125 TO 150. C: CONCRETE SLEEPERS ACCOMMODATED. D: INSULATION SET NUMBERS CORRECTED. E: NOTES 9 & 10 ADDED.)	02/6/10	C.L.			

SIGNAL DESIGN
EDMS SG0144263
cad DO NOT AMEND MANUALLY

DESIGNED	DRAWN	REVIEWED	VERIFIED	APPROVED
	J.M.S.			MS
DATE	SCALE	DRG. No.	REV. No.	A3
28/1/1987	N.T.S.	M03-203	1	

This drawing and the information contained therein have been created solely for a particular purpose and client. This is protected by copyright. You may not reproduce any of it in any form without the written permission of Rail Corporation New South Wales. If you do, you may have to pay damages to Rail Corporation New South Wales or you may be prosecuted.

ALL DIMENSIONS IN MILLIMETRES
AS 1100
THIRD ANGLE PROJECTION