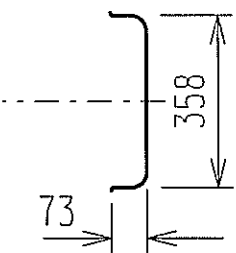


All holes to be through material thickness.
Plate Thickness to be approx 16mm.

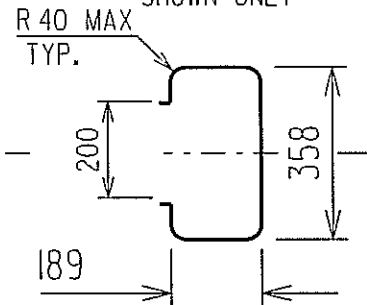
SECTION A-A

CROSS SECTION VIEW
SHOWN ONLY



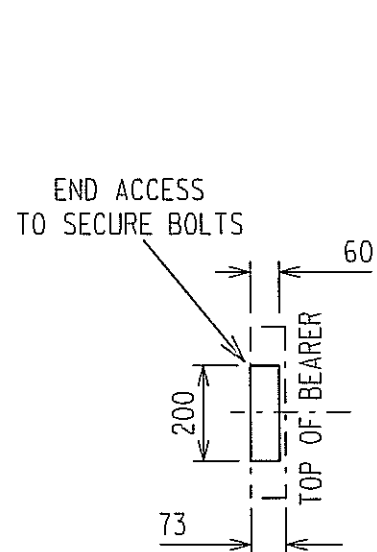
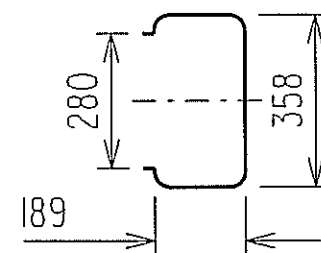
SECTION B-B

CROSS SECTION VIEW
SHOWN ONLY

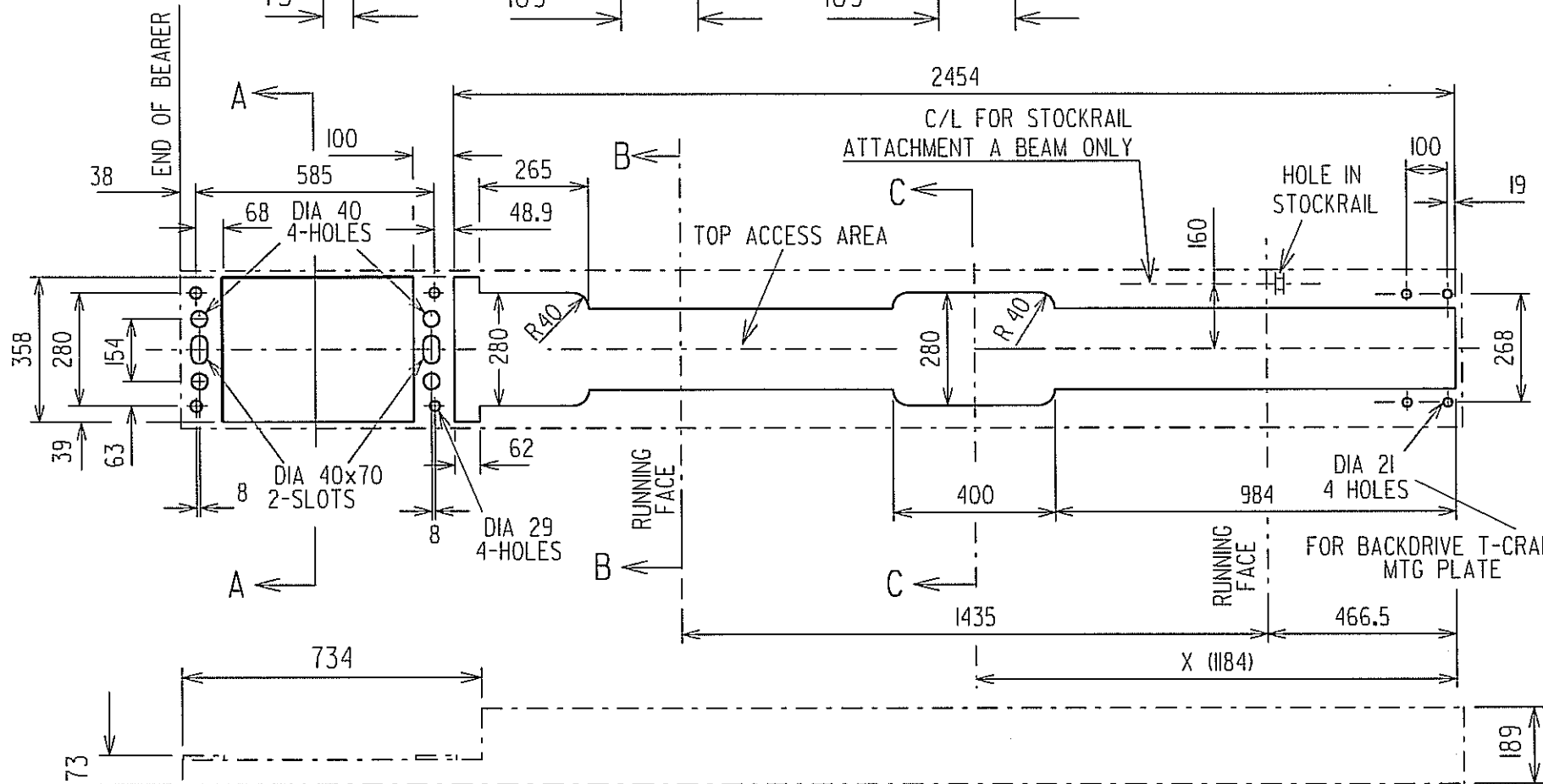


SECTION C-C

CROSS SECTION VIEW
SHOWN ONLY



END VIEW



SIDE ELEVATION

NOTES:

- 1.- This drawing only shows standard signalling attachment and access requirements to suit inbearer applications for M84, EP (clawlock & spherolock installations) & M3A (conventional drive) using asymmetric switch arrangements.
- 2.- Details of track aspects not shown.
- 3.- The A Beam is to be securely bolted to the stockrail.
- 4.- Standard switch drilling drawing MIO-509 is to be used with inbearer installations
5. This footprint is to suit signalling points layouts to drawings MIO-650 to MIO-697
6. The supplier is responsible for the beam design to the approval of the Chief Engineer, Track.

Independant switch beams to be mirror image about C/L for LH side

FOR BACKDRIVE DETAILS SEE SHEET 2 OF 2

2		SLOT DIA 40x70 WAS QTY 1, HOLES DIA40 WAS QTY 2. DIM 8 ADDED.		13.11.08	HE	R.F.	A.J.N.	GENERAL TOLERANCES LT/NEAR: < 1000 ±0.5mm ≥ 1000 ±3mm RADIAL: < 500 ± 0.25mm ≥ 500 ± 1.5mm ANGULAR: 30°		RailCorp SIGNALS Engineering Standards & Services Division	TITLE INBEARER "A" & "B" SLEEPER SIGNAL FOOTPRINT DETAILS					
1		SLOT DIA 40x70 WAS 25x55, HOLES DIA40 WAS DIA 25, 154 WAS 150.7		15.9.08	HE	R.F.	B.N.	R.W.A.			DESIGNED R.F.	DRAWN H.E.	REVIEWED A.J.N.	VERIFIED R.F.	APPROVED R.W.A.	
VERSION		DESCRIPTION		DATE	DRAWN	REVIEWED	VERIFIED	APPROVED	SIGNAL DESIGN		DATE 17.7.07	SCALE N.T.S.	DRG. No. MIO-508 SHEET 1 of 2		REV. No. 2	A3
This drawing and the information contained therein have been created solely for a particular purpose and client. This is protected by copyright. You may not reproduce any of it in any form without the written permission of Rail Corporation New South Wales. If you do, you may have to pay damages to Rail Infrastructure Corporation or you may be prosecuted.										© ALL DIMENSIONS IN MILLIMETRES AS 1100 THIRD ANGLE PROJECTION		cad DO NOT AMEND MANUALLY				

1

2

3

4

5

6

DF 400x277