

1

2

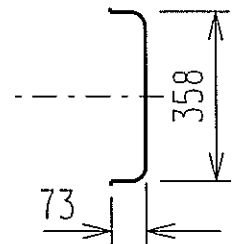
3

4

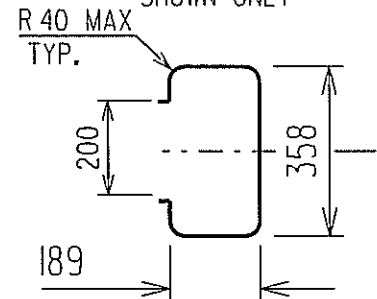
5

6

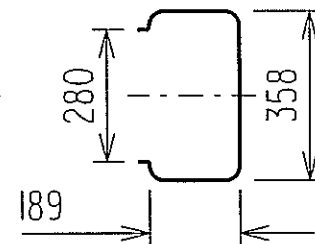
SECTION A-A
CROSS SECTION VIEW
SHOWN ONLY



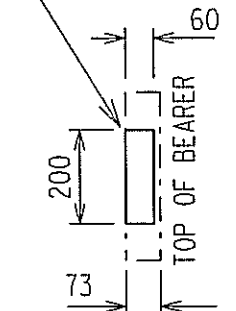
SECTION B-B
CROSS SECTION VIEW
SHOWN ONLY



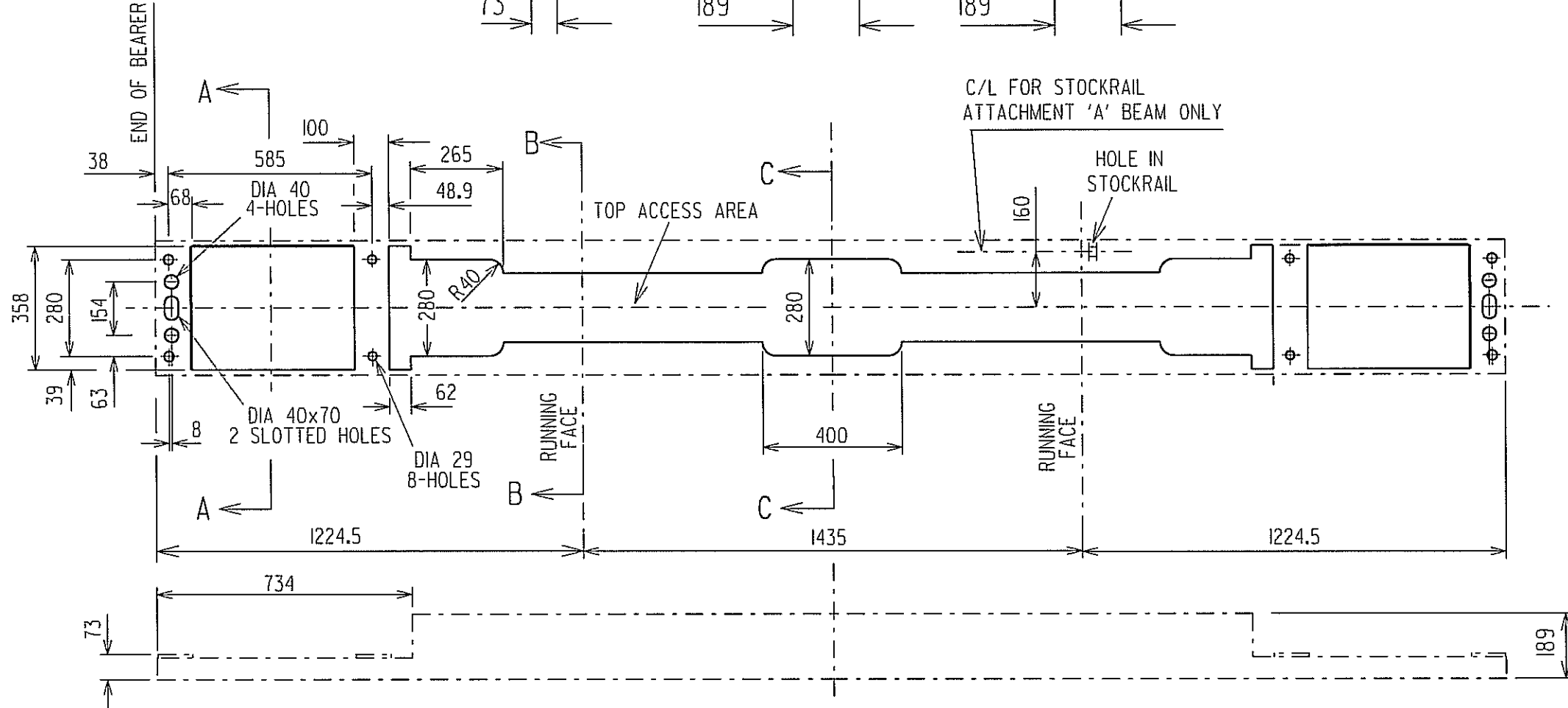
SECTION C-C
CROSS SECTION VIEW
SHOWN ONLY



END ACCESS
TO SECURE BOLTS



END VIEW



SIDE ELEVATION

NOTES:

- 1.- This drawing only shows standard signalling attachment and access requirements to suit inbearer applications for EP independent asymmetric switch arrangements.
- 2.- Details of track aspects not shown.
- 3.- The A Beam is to be securely bolted to the stockrail.
- 4.- Standard switch drilling drawing MIO-509 is to be used with inbearer installations
5. This footprint is to suit signalling point layout to drawing MIO-061
6. The supplier is responsible for the beam design to the approval of the Chief Engineer, Track.

						GENERAL TOLERANCES LINEAR: < 1000 ±0.5mm ≥ 1000 ±3mm RADIAL: < 500 ± 0.25mm ≥ 500 ± 1.5mm ANGULAR: 30'		RailCorp SIGNALS Engineering Standards & Services Division		TITLE INBEARER "A" & "B" SLEEPER FOR INDEPENDANT POINTS SIGNAL FOOTPRINT DETAILS			
						SIGNAL DESIGN		DESIGNED R.F.	DRAWN H.E.	REVIEWED <i>RLF</i>	VERIFIED <i>AJC</i>	APPROVED <i>RLF</i>	
This drawing and the information contained thereon have been created solely for a particular purpose and client. This is protected by copyright. You may not reproduce any of it in any form without the written permission of Rail Corporation New South Wales. If you do, you may have to pay damages to Rail Infrastructure Corporation or you may be prosecuted.						ALL DIMENSIONS IN MILLIMETRES AS 1100 THIRD ANGLE PROJECTION		DATE 4.12.08	SCALE N.T.S.	DRG. No. MIO-511	SHEET 1 of 1	REV. No. 0 A3	

1

2

3

4

5

6

DF 400*277