



Transport Access Program

Ashfield Commuter Car Park

COMMUNITY NOTIFICATION

DECEMBER 2017

The Ashfield Commuter Car Park is part of the Transport Access Program, a NSW Government initiative to provide a better experience for public transport customers by delivering accessible, modern and integrated transport infrastructure.

Project overview

The Ashfield Commuter Car Park project will provide around 95 additional parking spaces on Brown Street, plus a range of features and facilities to make it safer and more accessible to commuters.

Key benefits of the project include:

- up to 95 extra parking spaces on Brown Street, bringing the total to approximately 235 parking spaces
- lift access for those with accessibility issues, the elderly, parents with prams and customers carrying luggage
- new lighting and CCTV.



Artist's impression of Ashfield Commuter Car Park, subject to detailed design

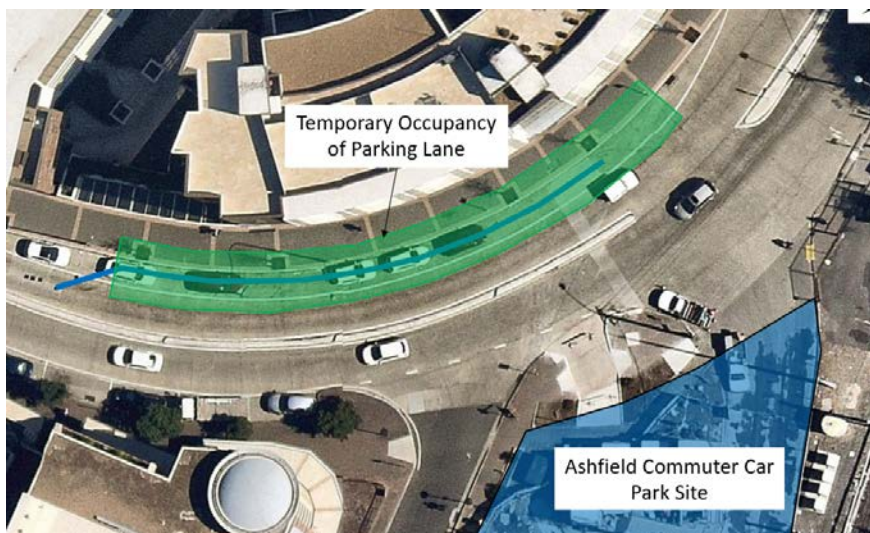
For more information call **1800 684 490**,
Email projects@transport.nsw.gov.au or visit transport.nsw.gov.au/projects
For urgent enquiries or complaints regarding construction activities, please call 24 hours **1800 775 465**

Construction update

The construction of the above-ground structure is progressing with the upcoming erection of formwork and the pouring of concrete. You may notice the following activities occurring on site and on Brown Street over December:

- construction of the above ground concrete structure
- mobilising of cranes on site
- installation of façade screens
- forming and pouring of the vertical columns and suspended concrete slabs
- erection of a scaffold around the site
- installation of essential fire and life safety services.

In addition to the above activities, **water main extension works** will also be undertaken **from 7am to 6pm from Wednesday 13 December 2017 until to Friday 22 December 2017** to extend the water main and connect it to the site for the essential fire and life safety services serving the new Ashfield Commuter Car Park. To allow for these works, **the parking lane on Brown Street will need to be temporarily occupied**, as detailed in the map below. **This will mean a temporary loss of approximately 7 parking spaces.** Signage will be installed to notify users and traffic control will be on duty to assist vehicle and pedestrian movements. Access to businesses and residential properties will be maintained at all times. A door knock will be undertaken within the immediate vicinity of the work site 24 hours prior to the start of work to explain the work activities in further detail to nearby residents and businesses.



Overview of the temporary occupancy of the parking lane on Brown Street to allow for water main extension works

Out of hours work in December

A concrete pour is planned within the commuter car park **from 7am-midnight on Friday 15 December 2017**. Activities occurring on site out of hours (after 6pm) will include finishing works to the concrete slabs and the packing up of equipment.

Equipment to be used includes concrete pumps and trucks, a motorised power trowel and power and hand tools. It is not anticipated that significant noise will be generated by these works.

Every effort will be made to minimise the impact on surrounding residents and businesses. We apologise for any inconvenience caused and thank you for your patience and cooperation during these important works.



This document contains important information about public transport projects in your area. If you require the services of an interpreter, please contact the Translating and Interpreting Service on **131 450** and ask them to call Transport for NSW on **(02) 9200 0200**. The interpreter will then assist you with translation.

Italian

Il presente documento contiene importanti informazioni sulle iniziative nel campo del trasporto pubblico nella vostra zona. Se desiderate i servizi di un interprete, contattate il Servizio traduzioni e interpreti al numero 131 450 indicando di voler parlare con Transport for NSW al numero (02) 9200 0200. L'interprete vi aiuterà a condurre la conversazione telefonica.

Hindi

इस दस्तावेज में आपके इलाके के सार्वजनिक-परिवहन परियोजनाओं के बारे में महत्वपूर्ण जानकारी सम्मिलित है। यदि आपको दुआषिए की सेवा की आवश्यकता है तो कृपया 131 450 पर ट्रान्सलैटिंग एन्ड इन्टर्प्रेटिंग सर्विस से संपर्क करें और उनसे (02) 9200 0200 पर ट्रान्सपोर्ट प्राजेक्ट्स को फोन करने के लिए कहें। उसके बाद दुआषिया आपको अनुवाद करने में सहायता देगा।

Simplified Chinese

这份文件包含你所在地区公共交通工程项目的重要信息。如果你需要传译服务，请致电翻译与传译服务机构，电话131 450，要求他们为你接通交通部(Transport for NSW)，电话是(02) 9200 0200。传译员会为你做翻译。

Greek

Το παρόν έγγραφο περιέχει σημαντικές πληροφορίες σχετικά με δημόσια έργα μεταφορών στην περιοχή σας. Αν χρειάζεστε τις υπηρεσίες διερμηνέα, παρακαλούμε επικοινωνήστε με την Υπηρεσία Μεταφράσεων και Διερμηνείας στο 131 450 και ζητήστε τους τηλεφωνήσουν στις Συγκοινωνίες στη ΝΝΟ στο (02) 9200 0200. Ο διερμηνέας θα σας βοηθήσει στη συνέχεια με τη μετάφραση.

Nepali

यो कागजातमा तपाईंको आफ्नो क्षेत्रमा भइरहेको महत्वपूर्ण सार्वजनिक परिवहनका परियोजनाहरूको बारेमा जानकारी गरेको छ। तपाईं यदि दोभासे अनुवादको सेवा आवश्यक भएमा, कृपया 131 450 मा सम्पर्क गर्नुहोस् र तेस पछि तिनीहरूलाई NSW परिवहन कार्यालयको टेलिफोन नम्बर (02) 9200 0200 मा फोन गर्नुहोस् र तेस पछि दोभासे अनुवादकले अनुवादमा तपाईंलाई मदत गर्नेछ।

Traditional Chinese

這份文件包含你所在地區公共交通工程項目的重要信息。如果你需要傳譯服務，請致電翻譯與傳譯服務機構，電話131 450，要求他們為你接通交通部(Transport for NSW)，電話是(02) 9200 0200。傳譯員會為你做翻譯。