



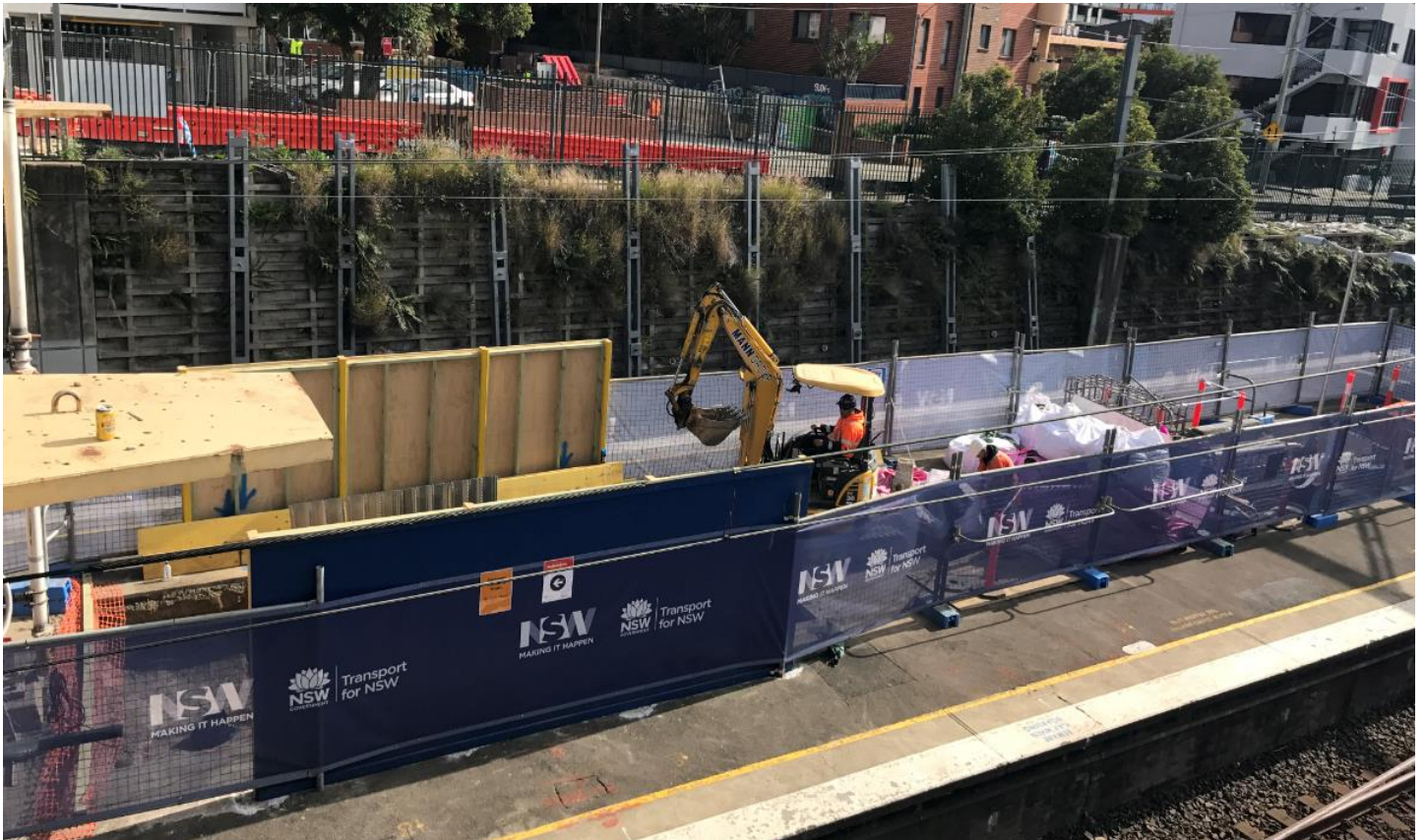
Transport  
for NSW

# Transport Access Program

## Harris Park Station Upgrade

COMMUNITY NOTIFICATION

JULY / AUGUST 2017



The Transport Access Program is a Transport for NSW initiative to provide a better experience for public transport customers by delivering accessible, modern, secure and integrated transport infrastructure.

### Project Overview

Harris Park Station is being upgraded under the Transport Access Program to provide a more modern, safe and integrated experience for public transport customers. Demolition is now complete on the toilets in preparation for the upgrade to a family accessible toilet. Hoarding has been installed around the station, on the concourse and platforms to allow safe works to occur.

For more information call **1800 684 490**,  
Email [projects@transport.nsw.gov.au](mailto:projects@transport.nsw.gov.au) or visit [transport.nsw.gov.au/projects-tap](http://transport.nsw.gov.au/projects-tap)  
For urgent enquiries or complaints regarding construction activities, please call 24 hours **1800 775 465**



**The footpath from Station Street East to Cambridge Street is to be upgraded** as part of the station upgrade works. This work will be staged to reduce the impact on the community, however, some pedestrian detours will be in place. Works will occur from **Monday 10 July through to September 2017**. Please allow extra travel time, and follow directional signage.

## Upcoming out of hours work

Throughout the rest of July, intermittent night work will occur on Harris Park Station concourse. Workers will be cutting roof sheeting and relocating CCTV security cameras. This work will be minimal and is not expected to be noisy. Pedestrian access will be maintained.

### From 4am Saturday 5 August to 4am Monday 7 August 2017

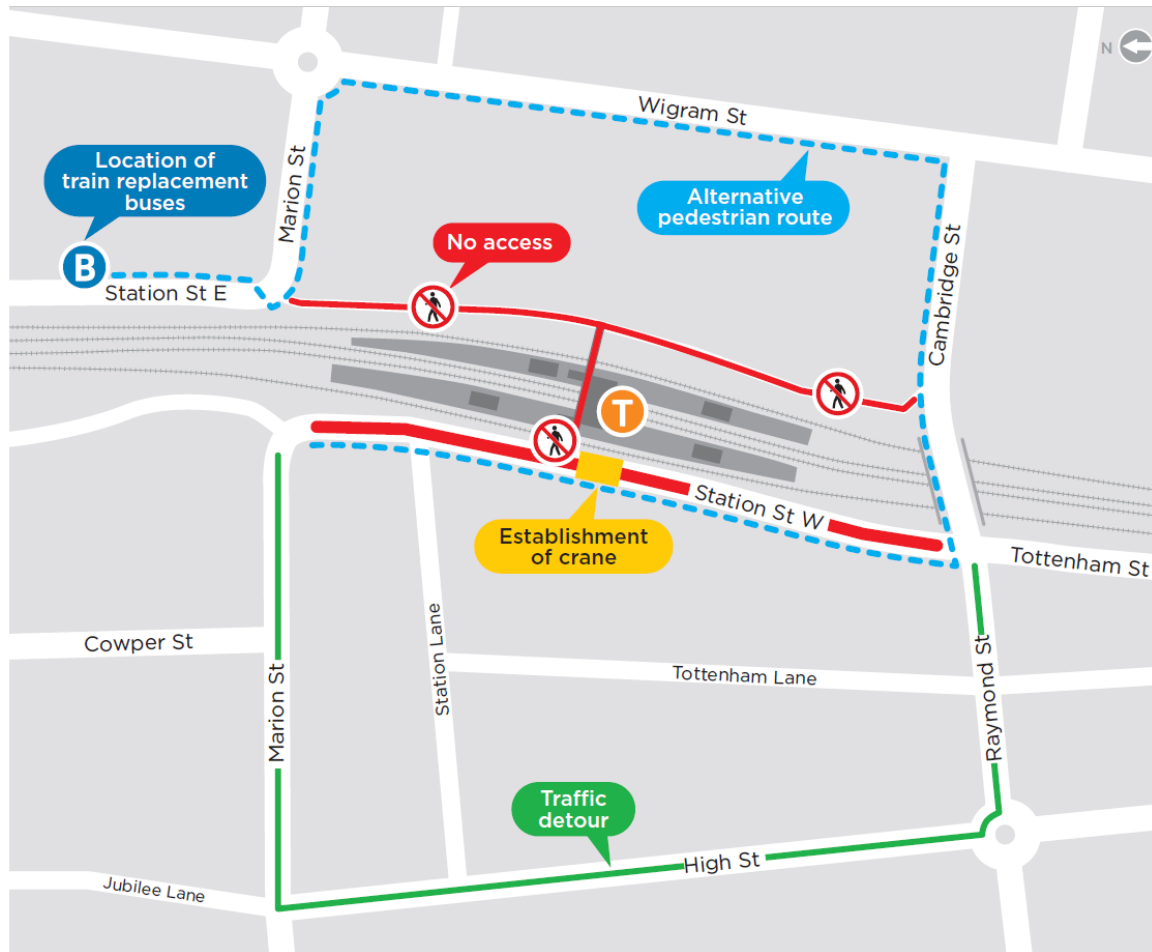
Work has been planned during a scheduled Sydney Trains shutdown to provide safe access for workers and minimise disruption to rail users. **Harris Park Station Footbridge will be CLOSED** to pedestrians. Traffic control will be implemented to ensure safe movement of pedestrians and traffic around the area.

Activities over the weekend include:

- electrical and drainage works
- installation of structural steel supports
- installation of footings on west side access ramp
- construction of canopy on east side access ramp
- installation of scaffolding and roofing
- installation of new stairs on platforms 3 and 4.

A crane will be established and operating on Station Street West. **Station Street West will be CLOSED to vehicles from Cambridge Street to Marion Street, with residents only access.** Traffic control will be implemented to allow safe access for residents and to direct traffic around the detour. Pedestrian access will be maintained at all times, and businesses will operate as usual.

**Buses will replace trains, from the relocated bus stop located on Station Street East.** Traffic controllers will be present to direct commuters to the relocated bus stop. **Please see map on the next page for the location of train replacement buses and traffic detours. For enquiries regarding rail services during the weekend works, please contact the Transport Infoline on 131 500.**



## Standard construction hours

Construction on the Harris Park Station Upgrade will be undertaken throughout the month during standard working hours, which are

- 7am to 6pm Monday to Friday, and
- 8am to 1pm Saturday

Notification of any works occurring outside these standard hours will be given prior to works commencing.

## Keeping the community informed

The community will be kept informed with regular project notifications and information via the project website found at: [www.transport.nsw.gov.au/projects/tap/current-works/harris-park-station](http://www.transport.nsw.gov.au/projects/tap/current-works/harris-park-station). For further information on the project, please call the Project Infoline on 1800 684 490 or email [projects@transport.nsw.gov.au](mailto:projects@transport.nsw.gov.au).

**We apologise for any inconvenience and appreciate your cooperation during these important works.**



This document contains important information about public transport projects in your area. If you require the services of an interpreter, please contact the Translating and Interpreting Service on 131 450 and ask them to call Transport for NSW on (02) 9200 0200. The interpreter will then assist you with translation.

#### Arabic

تتضمن هذه الوثيقة معلومات عن مشاريع النقل العام في منطقتكم. إذا كنتم بحاجة إلى خدمات مترجم، الرجاء الإتصال بخدمة الترجمة الشفهية والخطية على رقم 131 450 واطلبوا منهم ان يتصلوا بمصلحة المواصلات في نيو ساوث ويلز على رقم 9200 0200 (02). عندها يساعدكم المترجم بالترجمة.

#### Hindi

इस दस्तावेज में आपके इलाके के सार्वजनिक-परिवहन परियोजनाओं के बारे में महत्वपूर्ण जानकारी सम्मिलित है। यदि आपको दुभाषिण की सेवा की आवश्यकता है तो कृपया 131 450 पर ट्रेन्सलैटिंग एन्ड इन्टर्प्रेटिंग सर्विस से संपर्क करें और उनसे (02) 9200 0200 पर ट्रेन्सपोर्ट फॉर एनएसडब्ल्यू को फोन करने के लिए कहें। उसके बाद दुभाषिया आपको अनुवाद करने में सहायता देगा।

#### Chinese (Traditional)

這份文件包含你所在地區公共交通工程項目的重要信息。如果你需要傳譯服務，請致電翻譯與傳譯服務機構，電話131 450，要求他們為你接通交通工務部 (Transport for NSW)，電話是 (02) 9200 0200。傳譯員會為你做翻譯。

#### Simplified Chinese

这份文件包含你所在地区公共交通工程项目的重要信息。如果你需要传译服务，请致电翻译与传译服务机构，电话131 450，要求他们为你接通交通工務部 (Transport for NSW)，电话是 (02) 9200 0200。传译员会为你做翻译。

**Delivered by:**



For more information call **1800 684 490**,  
Email [projects@transport.nsw.gov.au](mailto:projects@transport.nsw.gov.au) or visit [transport.nsw.gov.au/projects-tap](http://transport.nsw.gov.au/projects-tap)  
For urgent enquiries or complaints regarding construction activities, please call 24 hours **1800 775 465**

