

# Outer Sydney Orbital corridor identification

Consultation on a recommended  
corridor of land for future motorway  
and freight rail line

Transport for NSW  
March 2018

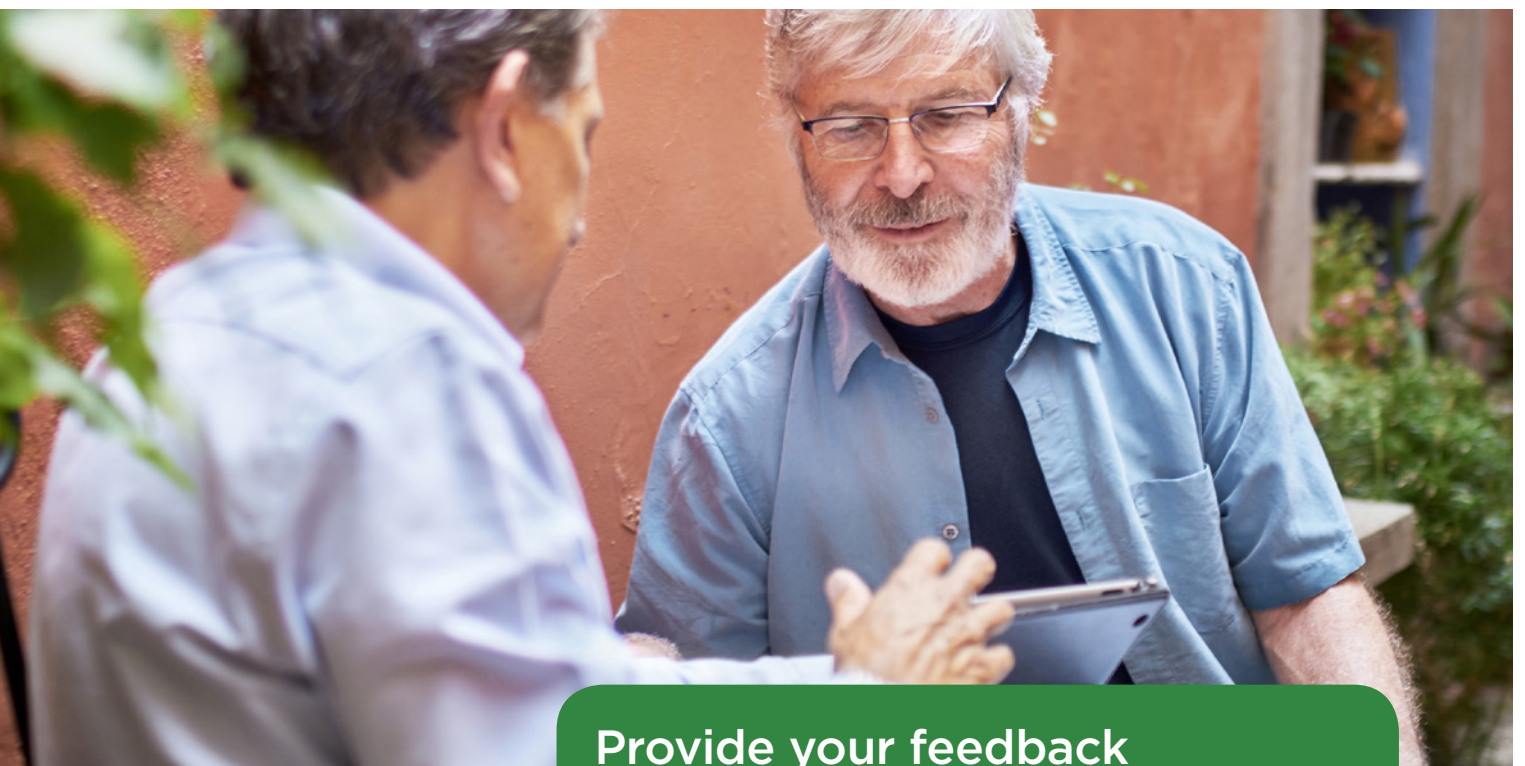


# Identifying land for the Outer Sydney Orbital corridor

We would like your feedback on the recommended corridor.

Transport for NSW is identifying land for the Outer Sydney Orbital corridor which would provide for a future north south motorway and freight rail line. The corridor will support the growth of Western Sydney and the distribution of freight across Sydney and regional NSW. We are now consulting on the identified land for the recommended corridor.

Western Sydney is undergoing a major transformation. Its population is one of the fastest growing in NSW and planning is underway for the Western Sydney Airport which will create thousands of new jobs and bring additional residents to the region.



## Provide your feedback

We are now seeking feedback on the recommended motorway and freight rail corridor by **18 May 2018**. You can use the interactive online map to see the corridor location and provide your feedback at [transport.nsw.gov.au/corridors](https://transport.nsw.gov.au/corridors)



Map of the recommended corridor



Transport for NSW will continue working with the Greater Sydney Commission, Department of Planning and Environment, local councils, community and stakeholders to refine the recommended corridor.



# Planning ahead

The NSW Government is planning for the long term transport needs of Western Sydney by identifying and protecting corridors of land that can be used to deliver transport infrastructure in the future, when it is needed.

The NSW Government is committed to supporting integrated land use and transport planning through corridor protection. This is a key priority identified in the NSW Long Term Transport Master Plan, Greater Sydney Region Plan, District Plans and Future Transport 2056 which

will guide how we deliver transport services, infrastructure and technology in NSW over the next 40 years. Early identification of these corridors will help allow the community to have confidence in their planning and property decisions for many years to come.



Looking south west from St Marys towards Orchard Hills and Claremont Meadows

Image credit: Spatial Media



Investigating transport corridors



## About the Outer Sydney Orbital corridor

Transport for NSW is identifying a corridor of land for the Outer Sydney Orbital in Sydney's west.


The Outer Sydney Orbital corridor will provide for future motorway and freight rail connection between Box Hill in the north, and the Hume Motorway near Menangle in the south.

A recommended corridor has been identified in collaboration with the Greater Sydney Commission and the Department of Planning and Environment. This integrated solution will support population, housing, freight requirements with connections to Port Botany, and job growth across Western Sydney. It will also ensure appropriate transport solutions are planned for the Western Sydney Airport which will be a catalyst for generating a range of new jobs and will enable people to work closer to home.

In the future, there will be further investigations to identify land to enable the Outer Sydney Orbital to provide connections between the Illawarra and the Central Coast.







Elizabeth Drive  
looking east from  
Luddenham to  
Badgerys Creek

Image credit: Spatial Media

## What is the benefit of identifying land for the corridor?

Identifying land now means that we can deliver the transport solutions we need for the future. Protecting the Outer Sydney Orbital corridor means we can build a motorway and freight rail line when they are needed to serve customers in suburbs across Western Sydney. Transport for NSW is responding to the growth of Western Sydney by planning ahead. Once land is identified we need to ensure it is protected from future development.

A future motorway and freight rail line would:

- Provide for a major transport link between the North West and South West Growth Areas.
- Provide connections to the planned Western Sydney Airport and future employment lands.
- Support growing communities, businesses and new jobs in Western Sydney.
- Provide a freight rail connection between Port Botany, Western Sydney and regional NSW.
- Support the further separation of freight and passenger rail.
- Move freight more rapidly, efficiently and safely by rail.

## Why do we need a corridor for a future motorway and freight rail line?

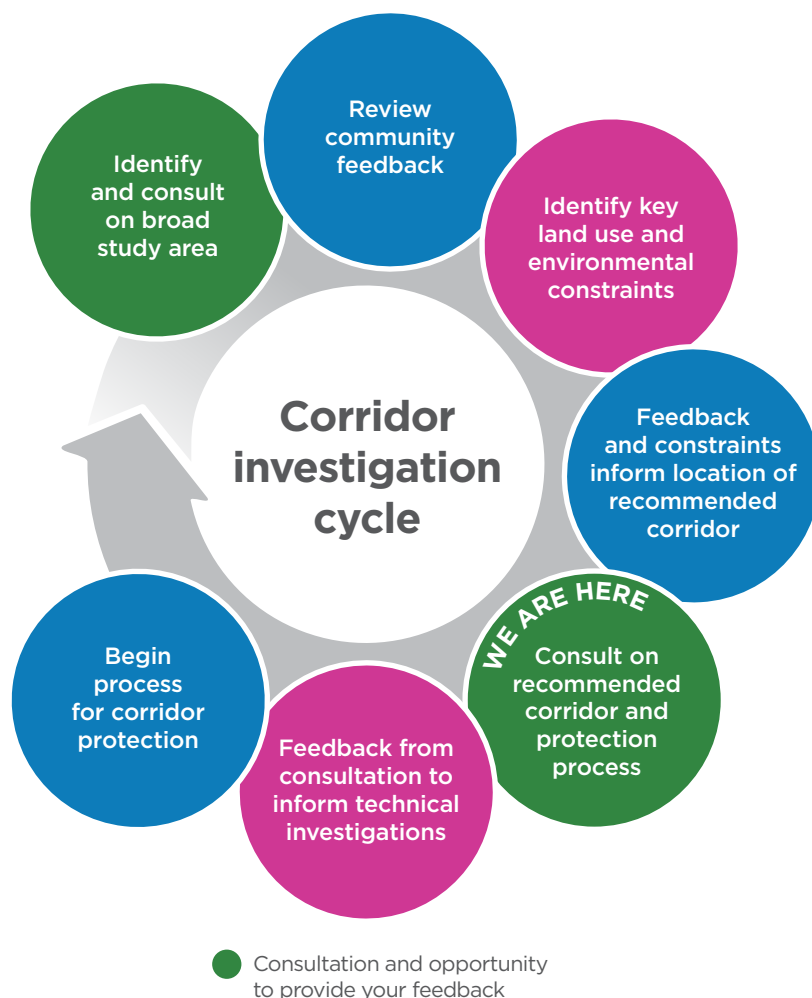
Our community and economy is growing. Transport for NSW is supporting this growth by planning for the Outer Sydney Orbital corridor to ensure land is available to deliver vital transport infrastructure when it is needed.

Construction of the motorway and freight rail line may not happen for many years; however identifying and protecting land now means the community and stakeholders will have certainty and know exactly where the infrastructure will be built in the future.

## What is corridor protection?

Corridor protection is a process to identify and protect land that can be used for future infrastructure purposes. Community consultation is a key part of this process and ensures that local constraints and opportunities are fully understood.

This process has identified a recommended Outer Sydney Orbital corridor. Following further consultation with property owners, the final corridor will be recommended to the Department of Planning and Environment for protection.



## When will land be acquired for the Outer Sydney Orbital corridor?

There is a lot of planning work to be done before any land is acquired for a future motorway and freight rail line. At this stage we are consulting with landowners, community and stakeholders on the recommended corridor. This feedback will be used to help refine the recommended corridor.

Property acquisition generally occurs just before the construction of infrastructure and this may be many years or decades away. In the meantime, existing land and property uses can continue.

Once the corridor has been confirmed and the process to protect it is complete, there is the opportunity for property owners to consider owner-initiated early acquisition under the *Land Acquisition (Just Terms Compensation) Act 1991* before the land is needed by the government. The land valuation and acquisition process will be fair, consistent and transparent with the market value of the property assessed at the time of the acquisition.





South Creek and  
St Clair towards  
the M4 Motorway

Image credit: Spatial Media

## How was the recommended corridor chosen?

The recommended corridor was identified following community consultation and consideration of key land use, property and environmental constraints across a broad study area.

In 2015, Transport for NSW consulted community members and groups, councils, representative bodies, businesses and residents on a broad study area over a ten week period. More than 1,200 comments and submissions were received from the community. We held 12 pop-up community information stalls and six community drop-in sessions.

The corridor investigation process identified a corridor that can:

- Minimise impacts on communities and the environment as much as possible.
- Minimise impacts on residential areas including villages, new communities and housing areas wherever possible.
- Minimise impact on ecologically significant areas wherever possible.
- Protect rural amenity and heritage areas wherever possible.
- Avoid heritage conservation lands and national parks wherever possible.
- Minimise impact on major facilities such as schools, universities, hospitals and critical public infrastructure including motorways and roads, major power lines and sewerage infrastructure.

# Next steps

Feedback from the consultation will help to refine the recommended corridor.



## Medium and long term

- Community consultation and environmental assessments before construction
- Progress property acquisition before construction of infrastructure
- Project delivery and associated community involvement





## Have your say

Provide your feedback on the recommended Outer Sydney Orbital corridor by **18 May 2018**.



Visit the website for more information  
**[transport.nsw.gov.au/corridors](http://transport.nsw.gov.au/corridors)**



Use the interactive online map to see the corridor location and to provide your feedback  
**[transport.nsw.gov.au/corridors](http://transport.nsw.gov.au/corridors)**



Email  
**[corridors@transport.nsw.gov.au](mailto:corridors@transport.nsw.gov.au)**



Write  
**Corridor Investigation Office  
Transport for NSW  
PO Box K659  
Haymarket NSW 1240**



Call  
**1800 837 511**



This document contains important information about transport investigations in your area. If you require the services of an interpreter, please contact the Translating and Interpreting Service on **131 450** and ask them to call the Corridor Investigation Office on **1800 837 511**. The interpreter will then assist you with translation.

**transport.nsw.gov.au**

**Tel** 1800 837 511

**Email** corridors@transport.nsw.gov.au

PO Box K659 Haymarket 1240

**Disclaimer**

While all care is taken in producing this work, no responsibility is taken or warranty made with respect to the accuracy of any information, data or representation. The authors (including copyright owners) expressly disclaim all liability in respect of anything done or omitted to be done and the consequences upon reliance of the contents of this information.

**© Transport for New South Wales**

Users are welcome to copy, reproduce and distribute the information contained in this report for non-commercial purposes only, provided acknowledgement is given to Transport for NSW as the source. Unless otherwise stated all images are the property of Transport for NSW however any third party use of photography will require prior written permission.

