

# New Intercity Fleet Maintenance Facility

## URBAN DESIGN UPDATE

**The NSW Government is delivering a New Intercity Fleet to replace the trains carrying customers from Sydney to the Central Coast, Newcastle, the Blue Mountains and the South Coast.**

The detailed design and construction of the new maintenance facility at Kangy Angy, which will service and maintain the New Intercity Fleet, is being delivered by John Holland on behalf of Transport for NSW.

The facility includes offices, amenities, staff parking and ancillary buildings as well as flood free access for local residents via a new bridge that will connect Enterprise Drive to Orchard Road.

### Urban design update

This notification provides an update on the urban design including:

- the location of buildings, roads and parking areas in the maintenance facility
- the design for on site buildings
- the colour schemes for the noise wall
- the landscape treatments and plantings.

We would like feedback from residents whose properties are close to the facility, on aspects of the urban design:

- the plants that will be chosen for landscaping
- colour preferences for the noise wall.

More information on how to provide feedback can be found on the back page of this notification.

### Urban design principles

The following principles guided the urban design:

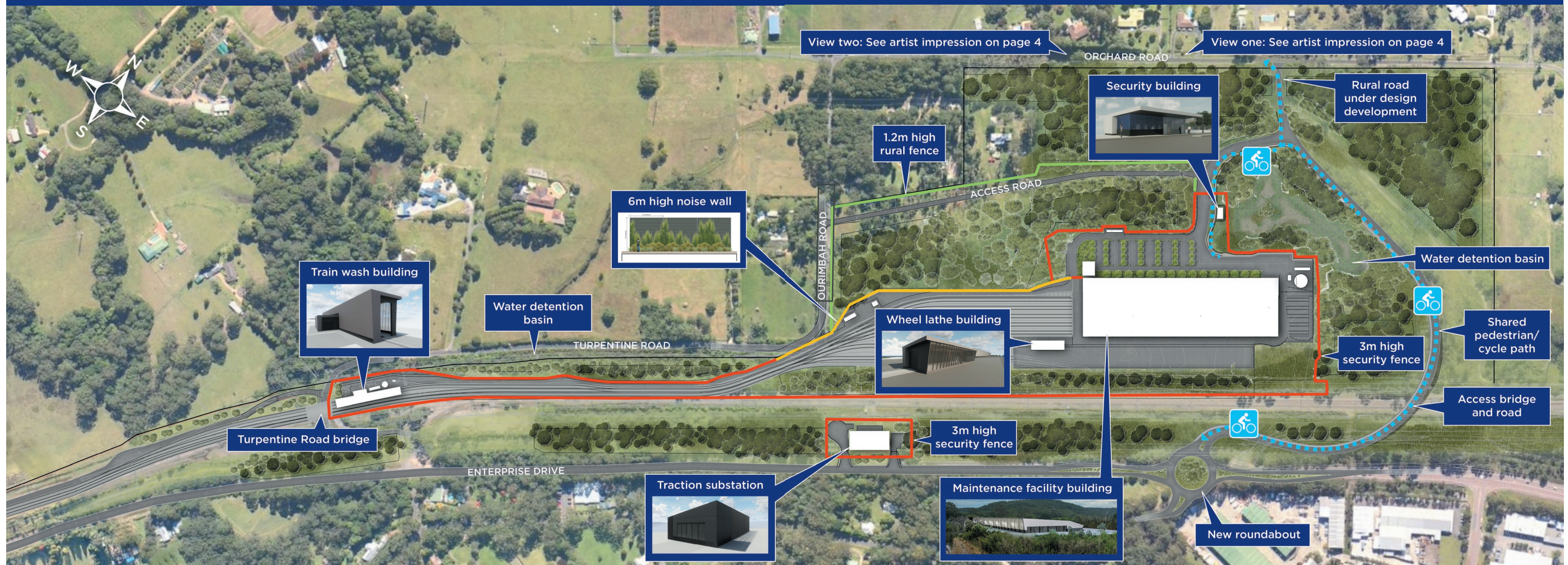
- visually integrate the façade and finishes of the maintenance facility buildings into the existing landscape
- use natural finishes and materials such as timber and rock
- use complementary finishes and vegetation to tie the project into the surroundings
- appreciate the importance of the bushland and fauna
- connect fauna habitats
- provide landscape buffers and visual amenity
- mitigate noise impacts.



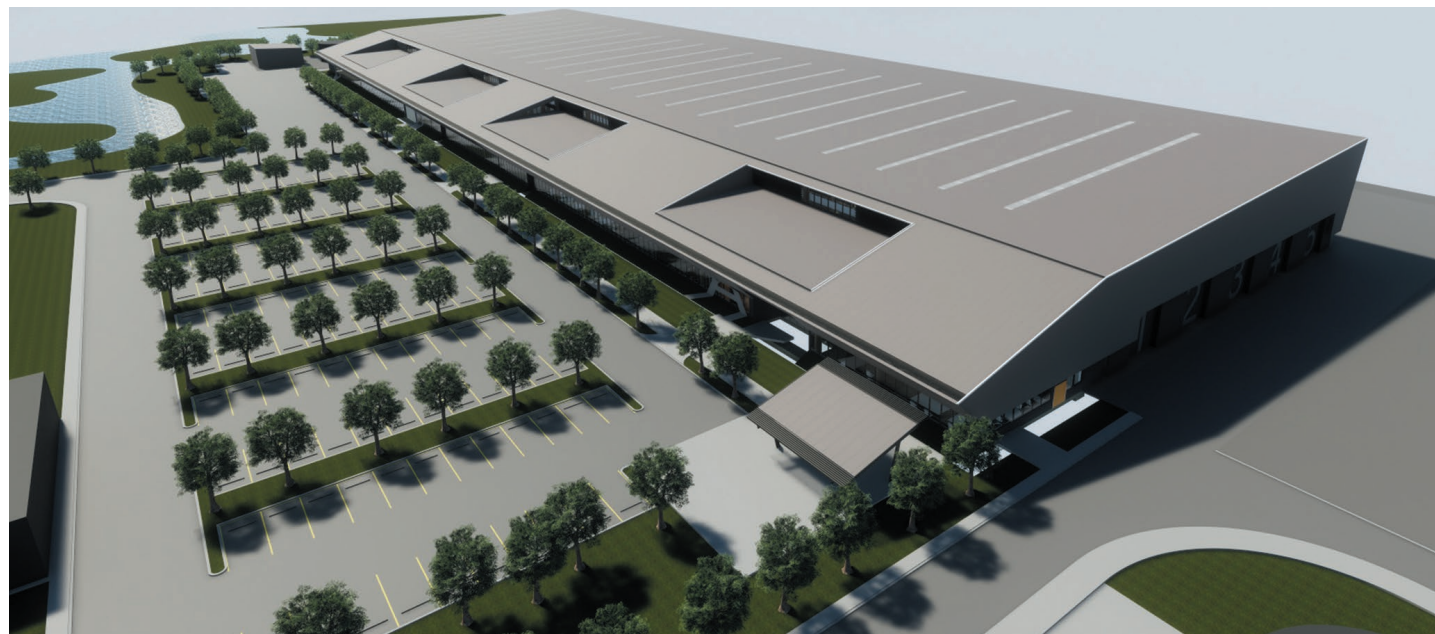
*Artist's impression of the maintenance facility looking west from the access bridge*



## Overview of the New Intercity Fleet Maintenance Facility site



Artist's impression. Indicative only. Design plans are subject to changes that may occur during detailed design.



Aerial artist's impression of the maintenance facility looking east



Artist's impression of the maintenance facility looking south from the access bridge



## Access bridge

The new access bridge provides direct dual lane access into the New Intercity Fleet Maintenance Facility from Enterprise Drive, and a link to Enterprise Drive for residents on Orchard Road.

The bridge forms part of the New Intercity Fleet Maintenance Facility access road to carry road traffic over the Main North Railway Line. The bridge incorporates conventional anti-throw safety screens.

## Turpentine Road bridge

The new Turpentine Road bridge is a 28.4 metre, single span bridge which crosses Chittaway Creek and Turpentine Road. The bridge will carry three rail tracks.

## Maintenance building

The maintenance building is the primary building on site where the New Intercity Fleet will be located and maintained. Artist's impressions of the maintenance building and surrounding landscape are shown below.



*Artist's impression of the completed maintenance facility site looking east from Orchard Road (approximate location marked as 'View one' on the overview map on page 2 and 3)*

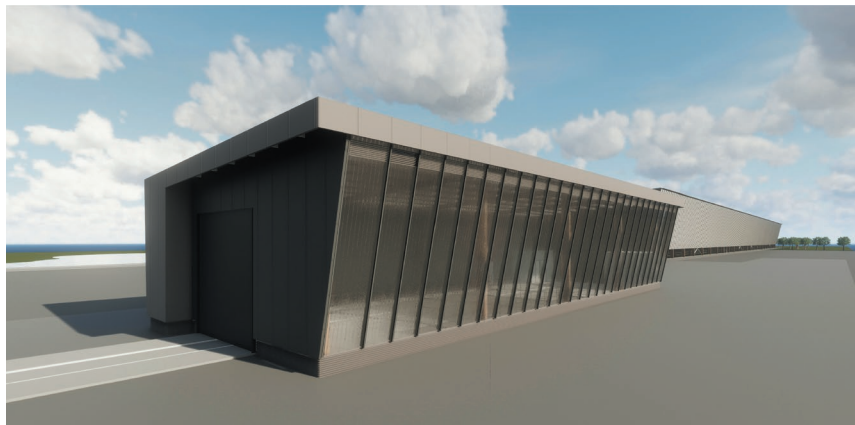


*Artist's impression of the completed maintenance facility site looking south east from Orchard Road (approximate location marked as 'View two' on the overview map on page 2 and 3)*



## Wheel lathe

Train wheels become worn during operation. To keep the wheels in good condition, they will be periodically maintained by the wheel lathe. The wheel lathe will allow for the train wheels to be maintained without the need to remove them from the vehicle. The wheel lathe will be located within an enclosed building to minimise noise impacts.



*Artist's impression of the wheel lathe building looking north*

## Security building

The security building provides visibility to the sliding front gate and car park and will accommodate security personnel.



*Artist's impression of the security building looking east*

## Train wash

The New Intercity Fleet Maintenance Facility will include an automated train wash building. The train wash will be located on the arrival track to enable all incoming trains to be transitioned through the wash. It is expected that the New Intercity Fleet will be washed every seven days. The trains would move through the automatic train wash under their own power.



*Artist's impression of the train wash facility looking east*

## Traction substation

A new traction substation will be located off Enterprise Drive and is required to provide power to the facility's tracks, yard and buildings.



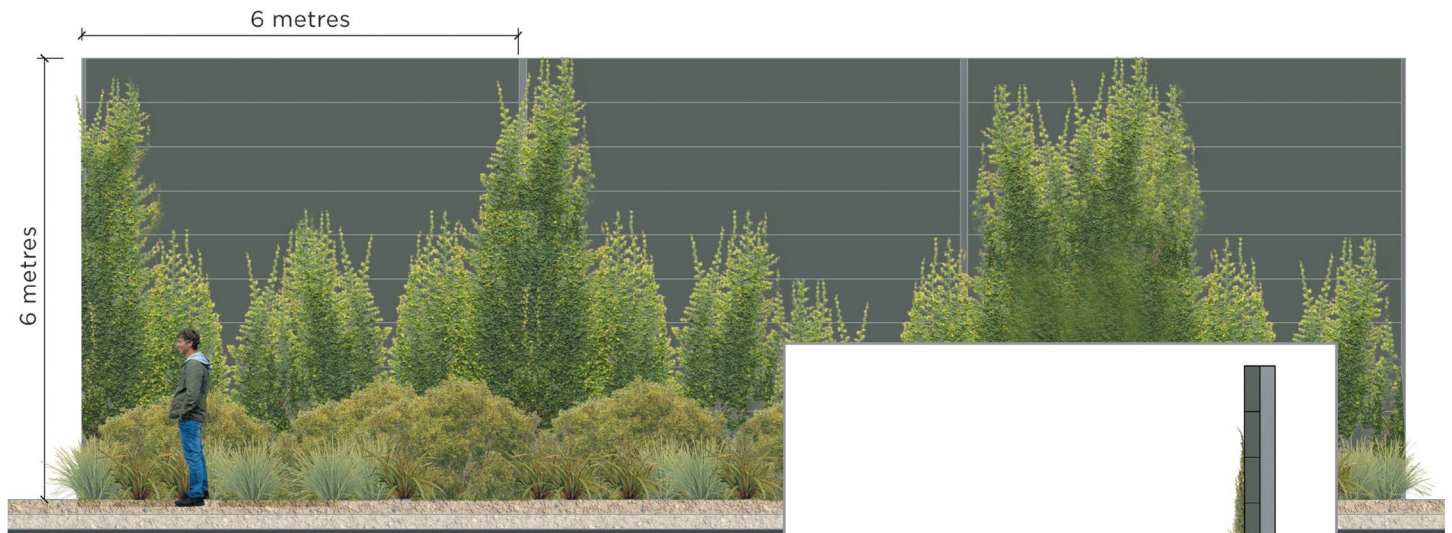
*Artist's impression of the traction substation looking north*



## Noise wall

A six metre high noise wall will be installed to reduce noise impacts to residents surrounding the project. The noise wall will extend from the western end of the maintenance building to the intersection of Ourimbah Road and Turpentine Road. It will run parallel with the railway corridor.

The noise wall is designed to blend with the natural environment. The colour of the noise wall is subject to public feedback. Please see the back page for further detail.



*Artist's impression of the noise wall*



*Artist's impression of Turpentine Road, looking south west from Ourimbah Road, including the noise wall*



## Landscape design

To construct the maintenance facility, trees and other vegetation have been removed. We are committed to managing our impact on the environment. During the detailed design phase, we have reduced the clearing of native vegetation, and as a result, the amount of vegetation retention has increased. The plants shown below have been selected to re-establish the areas where vegetation has been affected.

Australian native vegetation and vegetation native to the area have been chosen due to their adaptability, suitability and to maximise native plant re-establishment. Low maintenance shrubs and vegetation will be used to strengthen the vegetation communities in the site. Public feedback will ensure preferred species feature in one or more of the site's planting zones, along with other appropriate species.

### TREES AND PLANTS



### SHRUBS AND ACCENTS



### GROUND COVERS



### Preferred range of plants



Artist's impression of Enterprise Drive, looking south west and showing the traction substation





Artist's impression of the Maintenance Facility from the rail line heading north

## Have your say

We would like residents whose properties are close to the facility to have their say on aspects of the urban design:

- 1. Choice of trees, shrubs and ground cover to re-establish the areas where vegetation has been affected.**  
Please select two plant preferences from each category of plantings shown in the landscape design section on the previous page. We will use this feedback to ensure the preferred species feature in one or more of the site's planting zones, along with other appropriate species.
- 2. The colour of the noise wall.**  
From the three options below, please select your preference for the colour of the noise wall.  
Note: The colours shown below are indicative only. If you would like to view colour samples please call 1800 684 490.

Monument

Woodland Grey

Windspray

Noise wall colour choices

- 3. Public art**  
There is an opportunity to install public art near the maintenance facility site, which reflects the area's unique character and history. Please contact the project team via the details below if you have suggestions or feedback regarding public art.

## How to provide feedback

Feedback can be sent to: [projects@transport.nsw.gov.au](mailto:projects@transport.nsw.gov.au).

Please provide your feedback by **5pm Monday 17 December 2018**.

## Contact us

Working closely and effectively with the local community is a priority for Transport for NSW and John Holland. For more information about the project please call **1800 684 490**, email [projects@transport.nsw.gov.au](mailto:projects@transport.nsw.gov.au) or visit [transport.nsw.gov.au/projects](http://transport.nsw.gov.au/projects).

For urgent enquiries or complaints regarding construction activities, please call 24 hours **1800 775 465**.



This document contains important information about public transport projects in your area. If you require the services of an interpreter, please contact the Translating and Interpreting Service on **131 450** and ask them to call Transport for NSW on **(02) 9200 0200**. The interpreter will then assist you with translation.

For more information call 1800 684 490  
Email [projects@transport.nsw.gov.au](mailto:projects@transport.nsw.gov.au) or visit [transport.nsw.gov.au/projects](http://transport.nsw.gov.au/projects)

