



Transport Access Program

Ashfield Commuter Car Park

JANUARY 2018 COMMUNITY NOTIFICATION

The Ashfield Commuter Car Park is part of the Transport Access Program, a NSW Government initiative to provide a better experience for public transport customers by delivering accessible, modern and integrated transport infrastructure.

Project overview

The Ashfield Commuter Car Park Project is progressing well, with around 95 extra parking spaces being added, plus a range of features and facilities to make it safer and more accessible.

Key benefits

- More commuter parking spaces (approximately 235 total) on Brown Street
- Lift access for people with disabilities, the elderly, parents with prams, customers carrying luggage, etc.
- Designed to integrate into the surrounds and equipped with new lights, signs and CCTV cameras

Construction update

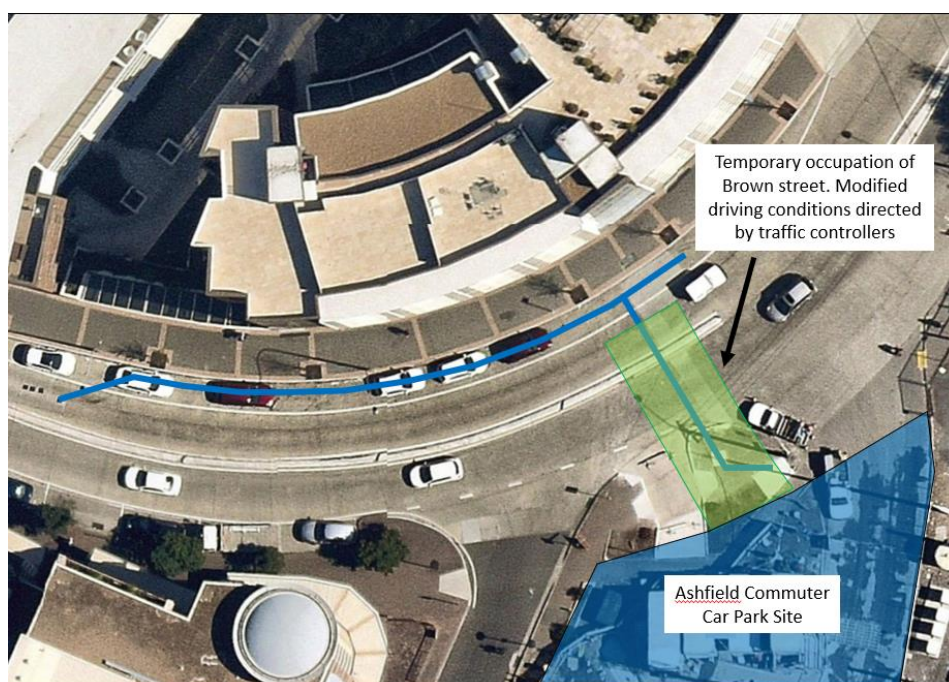
The construction of the above-ground structure is ongoing with the erection of formwork, installation of reinforcement and placement concrete. Various key construction and commissioning activities will be taking place with the installation of essential fire and life safety services.

You may notice the following activities occurring on site and on Brown Street over January:

- construction of the above ground concrete structure
- mobile cranes on site to assist with the construction activities
- installation of façade screens
- forming and pouring of the vertical columns and suspended concrete slabs
- modification of a scaffold around the site
- external footpath modification, pavement works and soft landscaping activities
- temporary occupancy of Brown Street roadway for extension of the water main.

It will be required to temporarily occupy the roadway on Brown Street and modify the flow of traffic to extend the water main and connect it to the site for the essential fire and life safety services serving the new Ashfield Commuter Car Park.

The north bound lane will be closed from Monday 8th January to Saturday 13th January 2018. The south bound lane will be closed from Monday 15th January to Friday 19th January 2018. Please follow the directions by traffic controllers whilst this important work is undertaken.



Overview of Temporary Occupancy of the Parking Lane on Brown Street for Water Main Extension works.

Extended working hours

A concrete pour is planned to be completed on **Tuesday 9th January 2018**. Due to the size of the pour, it is estimated that **works may continue until approximately 12am** on this day. Activities occurring on site after 6pm will include finishing of the concrete slabs and the pack up of equipment.

Equipment to be used includes concrete pump and trucks, motorised power trowel and handheld tools. You may notice workers on site during this time. It is not anticipated that significant noise will be generated by these works.

Every effort will be made to minimise the impact on surrounding residents and businesses. We apologise for any inconvenience caused and thank you for your patience and cooperation during these important works.



This document contains important information about public transport projects in your area. If you require the services of an interpreter, please contact the Translating and Interpreting Service on **131 450** and ask them to call Transport for NSW on **(02) 9200 0200**. The interpreter will then assist you with translation.

Arabic

تتضمن هذه الوثيقة معلومات عن مشاريع النقل العام في منطقتكم . إذا كنتم بحاجة إلى خدمات مترجم، الرجاء الإتصال بخدمة الترجمة الشفهية والخطية على رقم 131 450 واطلبوا منهم ان (02) 9200 0200. عندها يساعدكم المترجم بالترجمة 131 450 يتصلوا بقسم مشاريع النقل على رقم.

Chinese

这份文件包含你所在地区公共交通工程项目的重要信息。如果你需要传译服务，请致电翻译与传译服务机构，电话131450，**要求他们**为你接通交通工程部 (Transport Projects Division)，电话是 (02) 9200 0200。传译员会为你做翻译。

Croatian

Ovaj dokument sadrži važne informacije o projektima javnog prijevoza u vašem podru ju. Ukoliko su vam potrebne usluge tuma a molimo kontaktirajte Usluge Prevoditelja i Tuma a na 131450 i pitajte ih da nazovu Odjel za Planiranje Prometa - Transport Projects Division na (02) 9200 0200. Tuma ce vam tada pomo l u prevo enju.

Filipino

Ang dokumentong ito ay naglalaman ng mahalagang impormasyon tungkol sa mga proyektong transportasyon na pampubliko sa inyong lugar. Kung kailangan ninyo ng serbisyo ng tagapagpaliwanag, makipag-ugnayan po sa Serbisyo ng Pagsasalin at Pagpapaliwanag sa 131 450 at hilingan silang tawagan ang Transport Projects Division (Sangay ng mga Proyektong Transportasyon) sa (02) 9200 0200. Tutulungan kayo ng tagapagpaliwanag sa pagsasalin.

Italian

Il presente documento contiene importanti informazioni sulle iniziative nel campo del trasporto pubblico nella vostra zona. Se desiderate i servizi di un interprete, contattate il Servizio traduzioni e interpreti al numero 131 450 indicando di voler parlare con la Transport Projects Division al numero (02) 9200 0200. L'interprete vi aiuterà a condurre la conversazione telefonica.

Spanish

El presente documento contiene información importante sobre proyectos de transporte público en su área. Si requiere los servicios de un intérprete, llame al Translating and Interpreting Service al 131 450 y pídale que llamen a Transport Projects Division, teléfono: (02) 9200 0200. Luego el intérprete le ayudará con la traducción.

For more information call **1800 684 490**,
Email projects@transport.nsw.gov.au or visit transport.nsw.gov.au/projects
For urgent enquiries or complaints regarding construction activities, please call 24 hours **1800 775 465**

NSW
MAKING IT HAPPEN