



# Automatic Train Protection

## Thirroul

### COMMUNITY NOTIFICATION August 2018

Transport for NSW is boosting safety across the electrified rail network by delivering new Automatic Train Protection (ATP) technology.

#### Project overview

The technology will provide real-time information about speed limits and signal locations to train drivers and network operations team.

ATP will provide additional safety benefits and more reliable services by ensuring trains operate within the permitted speed limit.

The system includes:

- installation of balises electronic transponders) in the rail corridor between existing trackside infrastructure to monitor train speeds
- installation of equipment on board all suburban and Intercity train fleets that will continually collect information such as the train's speed, distance and direction.

ATP is being rolled out across the Sydney Trains and NSW TrainLink electrified network.

#### Upcoming activities at Thirroul

This month we will be working inside the rail corridor and around Thirroul Station. Please see map of work area overleaf..

#### Weekend works – 4 to 5 August

To minimise disruption to our customers and ensure the safety of workers, we will be carrying out some of these works during a scheduled trackwork weekend. This month will be working from **6am to 10pm on Saturday 4 August and Sunday 5 August.**

#### What you may notice

As part of these works, we will be excavating cable route.

This work will require the use of a dump truck, excavator and water cart. Workers will access the site via two gates along Station Street Thirroul.

Some of this work may be noisy and we will take every precaution to minimise noise impacts such as turning off machinery not in use. Lights will be directed away from nearby residents. Local traffic control will be in place.

#### Construction hours

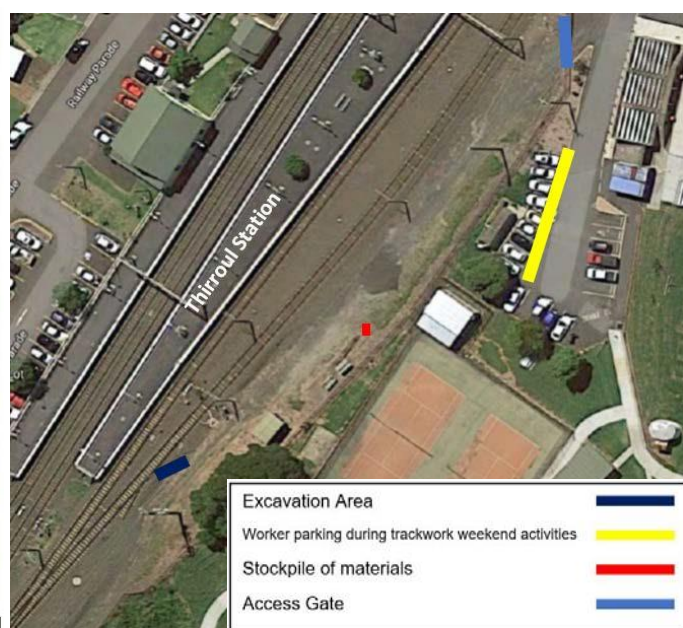
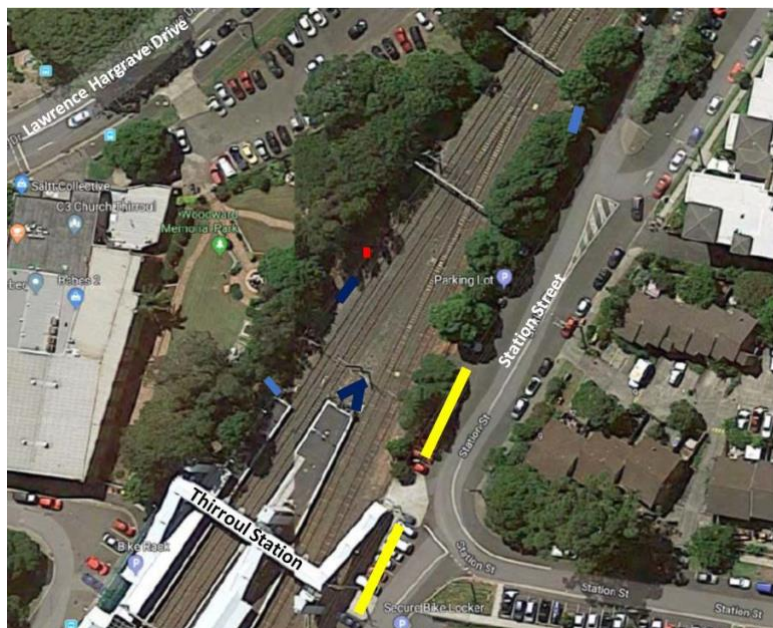
The majority of work will be undertaken during standard construction hours, 7am and 6pm Monday to Friday, and between 8am and 1pm Saturdays.

#### Keeping the community informed

Local traffic control will be in place. The project team will keep the community regularly informed with notifications and updates on the Transport for NSW website.

Thank you for your patience during these important works.

## Map of work areas



Picture of a 'balise' – an electronic transponder that monitors train speeds.

## How can I find out more?

For the latest information please check the website [www.transport.nsw.gov.au/projects](http://www.transport.nsw.gov.au/projects) or call **1800 684 490**. For urgent enquiries or complaints, call our 24-hour construction response line on **1800 775 465**.



This document contains important information about public transport projects in your area. If you require the services of an interpreter, please contact the Translating and Interpreting Service on **131 450** and ask them to call Transport for NSW on **(02) 9200 0200**. The interpreter will then assist you with translation.

For more information call **1800 684 490**,  
Email [projects@transport.nsw.gov.au](mailto:projects@transport.nsw.gov.au) or visit [transport.nsw.gov.au/projects](http://transport.nsw.gov.au/projects)  
For urgent enquiries or complaints regarding construction activities, please call 24 hours **1800 775 465**