

Kitchener Park. Bus Shelter. Mona Vale

Assessment of Heritage Significance

Prepared by Long Blackledge Architects

for

Transport of NSW

Released Under NSW GIPA Act 2009

Issue A Draft dated 26 July 2017



Nominated Architect:
William Blackledge ARAIA
NSW Reg 9057

Long Blackledge Architects Pty Ltd
Suite 303, Valhalla Studios
166 Glebe Point Road, Glebe, NSW 2037
ABN: 54 608 766 945

T 02 9552 4294
M 0410 401390
E william@longblackledge.com.au
W www.longblackledge.com.au



Document controls

Business Name	Long Blackledge Architects P/L				
Client	Transport for NSW				
Project/Document Title	Kitchener Park Bus Shelter. Mona Vale. Assessment of Heritage Significance				
Project No.		Issue	A	Date	27/07/17
Prepared by					
William Blackledge				26/07/17	
(Name)		(Signature)		(Date)	
Reviewed by					
Peter Phillips				27/07/17	

Change history

Issue	To	Change description	Date
A	TfNSW	Initial draft issue	27/07/17

Intentionally blank page

Released Under NSW GIPA Act 2009

TABLE OF CONTENTS

1. Introduction	6
1.1 Preamble	6
1.2 Location	6
1.3 Referenced documents	6
1.4 Listed Status	6
2. Assessing heritage significance	6
3. History of the bus shelter	8
4. Description of the shelter	10
5. Comparative analysis	11
6. Community values	12
7. Assessment of Significance	12
7.1 Criterion (A) An item is important in the course, or pattern , of the cultural or natural history of the local area.....	12
7.2 Criterion (B) Special association with the life or works of a person , or groups of persons, of importance.....	12
7.3 Criterion (C) The item is important in demonstrating aesthetic characteristics and /or a high degree of creative or technical achievement in the local area	12
7.4 Criterion (D) An item has a strong or special association with a particular community or cultural group in the local area for social, cultural or spiritual reasons	13
7.5 Criterion (E) An item has potential to yield information that will contribute to an understanding of the cultural or natural history of the local area	13
7.6 Criterion (F) An item processes uncommon, rare or endangered aspects of the cultural or natural history of the local area	13
7.7 Criterion (G) An item is important in demonstrating the principal characteristics of a class of local cultural places.	13
8. Statement of Significance	13
9. Conclusion and Recommendations	14

Intentionally blank page

Released Under NSW GIPA Act 2009

1. Introduction

1.1 Preamble

Long Blackledge Architects P/L has been requested by Transport NSW to assess the heritage significance of the bus shelter close to the junction of Barrenjoey and Pittwater Roads in Mona Vale. This shelter is affected by the construction of the proposed B Way.

This report assesses the heritage significance of the shelter in accordance with the NSW State Heritage criteria.

1.2 Location



Figure 1. Location Source: Google Maps 2017

The bus shelter is located east of the intersection of Barrenjoey and Pittwater Roads.

1.3 Referenced documents

- Former NSW Heritage Office. *Assessing Heritage Significance* July 2001
- Former NSW Heritage Office. *History and Heritage* 1996

1.4 Listed Status

The bus shelter has no heritage listed status.

2. Assessing heritage significance

The assessment follows the protocols of the former NSW Heritage Office “Assessing Heritage Significance” from the “NSW Heritage Manual”.

Heritage or cultural significance (the terms are interchangeable) is the basis of the heritage management system in NSW. A clear understanding of the significance of an item allows good heritage decisions to be made, because it clarifies why an item is important.

The process of assessment of the shelter has involved eight steps:

- Research the documentary and physical evidence relating to the item
- Undertake a comparative analysis of the item
- Understand its community value
- Assess its significance against NSW Heritage assessment criteria
- Determine the item's level of significance
- Prepare a succinct statement of heritage significance
- Peer review
- Conclude report

An item will be considered to be of State (or local) heritage significance if it meets one or more of the following criteria:

Criterion (a) An item is important in the course, or pattern, of NSW's cultural or national history (or the cultural or natural history of the local area);

Criterion (b) An item has strong or special associations with the life or works of a person, or group of persons, of importance in NSW's cultural or national history (or the cultural or natural history of the local area);

Criterion (c) An item is important in demonstrating aesthetic characteristics and /or a high degree of creative or technical achievement in NSW (or the local area);

Criterion (d) An item has a strong or special association with a particular community or cultural group in NSW (or the local area) for social, cultural or spiritual reasons;

Criterion (e) An item has potential to yield information that will contribute to an understanding of NSW's cultural or national history (or the cultural or natural history of the local area);

Criterion (f) An item processes uncommon, rare or endangered aspects of NSW's cultural or national history (or the cultural or natural history of the local area);

Criterion (g) An item is important in demonstrating the principal characteristics of a class of NSW's

- Cultural or natural places; or
- Cultural or natural environments.

Or a class of the local area's

- Cultural or natural places; or
- Cultural or natural environments.

The shelter is tested against these criteria following the guidelines in the “Assessing Heritage Significance” manual.

3. History of the bus shelter

There has been a shelter at the junction of Pittwater and Barrenjoey Roads for several decades. An early shelter is recorded in a photograph dated around 1920 (Figure 2).



Figure 2 Monavale c1920 from “Pat” Houghton Source: Monavale Local Studies Library
Note: the panorama is taken at the junction of Pittwater and Barrenjoey Roads, looking north, the timber shelter on the right was serviced from both roads and was the site of bus stops until c.1985.



Figure 3. The Kitchen Park shelter 1961 during flooding. This utilitarian shelter was located at the intersection of Barrenjoey and Pittwater roads. Source: Monavale Local Studies library

The utilitarian structure shown in Figure 3 was demolished following the decision to move the bus stop further east up Barrenjoey Road for reasons of safety and convenience.¹

¹ Warringah Shire Council Meeting Minutes 12 March 1985 p56

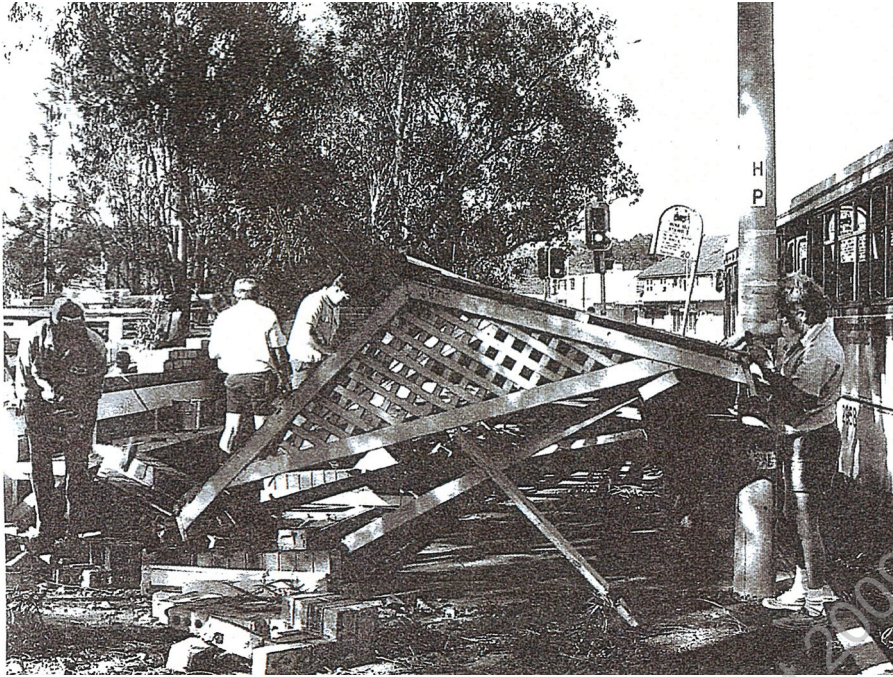


Figure 4 Kitchener Park Bus Shelter being removed by Council following storm damage. Undated image but probably November 1994. Source: Mona Vale Local Studies Library.

The current bus shelter was constructed in February 1995. It replaced an earlier structure that had been damaged during storms in November 1994 (Figure 4).

The present bus shelter was part of an initiative by Warringah Shire Council to replace shelters in the “A” Riding of the municipality. With the creation of Pittwater Council in May 1992, the new council took the opportunity (as North Sydney Council had in 1984) to project the identity of the municipality through appropriately designed shelters.²

The “Pittwater” shelters ceased to be constructed after the adoption of the cheaper modular Adshel bus shelters.

Pittwater Council was merged into the Northern Beaches Council in May 2016.

² Merinda Rose (and others) at the community discussion 19th July 2017 Pers.comm

4. Description of the shelter



Figure 5 Kitchener Park Bus Shelter view from the SE. July 2017



Figure 6 View from NW



Figure 7 View from W



Figure 8 Detail of corner treatment



Figure 9 Interior

The shelter is a timber framed upper structure sitting on a masonry base of rendered brickwork with a rusticated sill. The frame is designed to evoke the Arts and Crafts design of the earlier houses of the area with braced columns extended and moulded beam ends and shaped brackets. The roof is a series of simple gangnail roof trusses supporting a colorbond roof. The rear of the shelter frame is glass panelled.

The shelter is part of group of similarly designed shelters, the variation being length. The modular design of the shelter allows considerable variation in length while retaining the quality and identity of the shelters by the treatment of their ends (see figures 10 and 11).



Figure 10 “Pittwater” Shelter at Waratah Street. July 2017



Figure 11 “Pittwater” Shelter at Waratah Street. July 2017

5. Comparative analysis

Bus shelters constructed in the late 20th century appear to fall into two main categories: those designed in a modern idiom, mostly metal framed (including the ubiquitous Adshel structures) and those designed in a more traditional style evoking earlier periods, many of which are timber framed.



Figure 12 Bus shelter, City of Sydney



Figure 13 Adshel bus shelter, City of Sydney



Figure 14 Bus shelter, Paddington



Figure 15 Bus shelters, North Sydney

By comparison with other shelter designs in a traditional idiom, the Pittwater bus shelters exhibit a refinement of detail and proportion.

6. Community values

In order to attempt to gauge the degree of esteem in which the shelter is held by the community, a meeting was held (at short notice) on 19th July 2017. The gathering was attended by about a dozen interested local members of the public.

The importance of the bus shelter construction programme as an expression of the local identity of the newly formed Pittwater Council was stressed.

Merinda Rose (who designed the shelters while a Councillor) provided further detail on the local inspiration for the design and some of the limitations, particularly budget constraints, that affected the design.

A common view expressed was the need to preserve this element from the past, “to have something from the past, even the recent past, as so much has been lost” and “we do not want to be a replica of the rest of Sydney”.

Most of the group, which included past community leaders, had a longstanding relationship to the area, and therefore felt that the views of the group would be reasonably representative of the community as a whole.

7. Assessment of Significance

7.1 Criterion (A) An item is important in the course, or pattern , of the cultural or natural history of the local area

For the shelter to have historic significance it must be associated with a significant activity or historic phase. The shelter (like its counterparts elsewhere in the former Pittwater municipality) is associated with the relatively brief existence of the local government area of Pittwater Council. This phase has some local historical significance.

7.2 Criterion (B) Special association with the life or works of a person , or groups of persons, of importance

The shelter does not appear to be strongly associated with the life and works of persons of importance in the cultural history of the local area.

7.3 Criterion (C) The item is important in demonstrating aesthetic characteristics and /or a high degree of creative or technical achievement in the local area

The shelter is a carefully designed structure that specifically references some of the special characteristics of the local area. The careful choice of materials is not only functional but also symbolic of the area, for example the masonry base and its colour references the sand and sandstone of the

locality. The upper frame references the significant architectural character of the finer, earlier houses of the area.

The shelter is locally aesthetically distinctive and has landmark qualities.

7.4 Criterion (D) An item has a strong or special association with a particular community or cultural group in the local area for social, cultural or spiritual reasons

The shelter has local significance through its association with the former Pittwater Council, and that Council's endeavours to create a "sense of place" in the local area.

The shelter is esteemed by the community for its landmark quality.

The guidelines in "Assessing Heritage Significance" discuss possible exclusion of the item under this criterion if the community is seeking retention only in preference to a proposed alternative (in this instance the generic B Way shelter). The gathering of 19th July 2017 indicated a firmly held appreciation of the shelter for its intrinsic qualities.

7.5 Criterion (E) An item has potential to yield information that will contribute to an understanding of the cultural or natural history of the local area

This simply designed shelter does not meet this criterion

7.6 Criterion (F) An item processes uncommon, rare or endangered aspects of the cultural or natural history of the local area

The shelter is one of at least three shelters and is not rare in the locality.

7.7 Criterion (G) An item is important in demonstrating the principal characteristics of a class of local cultural places.

The shelter has some local significance as part of a group of shelters constructed by Pittwater Council to provide a distinctive local shelter type

8. Statement of Significance

The Kitchener Park Bus Shelter has local aesthetic significance as a well-designed shelter that is appropriate to its context. The shelter is valued in the community for its contribution to the character of Mona Vale.

It also has local significance as one of a group of shelters constructed by the former Pittwater Council to provide a locally distinctive shelter type.

9. Conclusion and Recommendations

The Kitchener Park Bus Shelter has local heritage significance.

We would recommend Transport for NSW explore the opportunities to retain and upgrade the shelter.

Released Under NSW GIPA Act 2009