






# Sydney and Intercity trains Trackwork

**Monday 29 April to Sunday 05 May**

Line	Day(s) affected	Special Train Notices (STN)	Bussing
Select the line for more information			View timetable
<b>City Circle</b>	Monday – Thursday Weekend	STN 0846	
<b>T1 North Shore Line</b>	No trackwork scheduled		
<b>T1 Western Line</b>	Weekend	STN 0846	
<b>T2 Inner West &amp; Leppington Line</b>	Weekend	STN 0846	
<b>T3 Bankstown Line</b>	Tuesday – Friday Weekend	STN 1309 STN 0846	
<b>T4 Eastern Suburbs &amp; Illawarra Line</b>	Weekend	STN 0846	
<b>T5 Cumberland Line</b>	Monday & Wednesday Weekend	STN 0762 STN 0846	
<b>T6 Carlingford Line</b>	No trackwork scheduled		
<b>T7 Olympic Park Line</b>	No trackwork scheduled		
<b>T8 Airport &amp; South Line</b>	Weekend	STN 0846	
<b>T9 Northern Line</b>	Weekend	STN 0846	
<b>Blue Mountains Line</b>	No trackwork scheduled		
<b>Central Coast &amp; Newcastle Line</b>	No trackwork scheduled		
<b>Hunter Line</b>	No trackwork scheduled		
<b>Southern Highlands Line</b>	No trackwork scheduled		
<b>South Coast Line</b>	No trackwork scheduled		

## Additional information

### Sydney Trains

- [Trackwork Bussing Map](#)
- [Next weeks trackwork](#)

### NSW TrainLink

- [Trackwork Bussing Map](#)
- [Next weeks trackwork](#)

[Scope of work: Configuration 2 + 15](#)

[Special Events extract](#)

[Feedback form](#)

Use this guide to advise Sydney Trains and NSW TrainLink Intercity customers of trackwork affecting their journey. **Please make this guide available to all staff at your location.**

### Easy access alternate transport

Staff should contact RMC Customer & Information on 7 7039 if alternate transport is required for customers requiring easy access transport when travelling through areas affected by trackwork.

# Trackwork

## Altered transport arrangements

Monday 29 to Sunday 05 May



### City Circle

#### Monday 29 April until Thursday 2 May

Nightly from 23:30 until 04:00

**Reference:** 100-19GM

**Work:** City Inner

- Trains run in one direction only, from Central first stop Town Hall.
- Some City Circle trains run to a changed timetable and leave from different platforms.
- Customers may need to change trains at Central to complete your journey

#### 02:00 Saturday 4 until 02:00 Monday 6 May

**Reference:** STN 0846

**Work:** Configuration 15

- Buses replace trains between Central and Wynyard via Museum.
- T1 North Shore, T9 Northern and some T1 Western and T2 Inner West Line trains continue to stop at Town Hall and Wynyard.

Customers travelling to:

- Museum or St James, change at Central for a bus
- Circular Quay, change at Wynyard or Central for a bus

#### Bus routes

**3CC** Circular Quay to Wynyard and return

**5CC** Central, Museum, St James, Circular Quay and return

[Home](#)

### T1 North Shore Line

#### 02:00 Saturday 4 until 02:00 Monday 6 May

**Reference:** STN 0846

**Work:** Configuration 15

- Trains continue to run however trackwork on the City Circle may affect how customers travel.
- Buses replace City Circle trains between Central and Wynyard via Museum.

[Home](#)

### T1 Western Line

#### 02:00 Saturday 4 until 02:00 Monday 6 May

**Reference:** STN 0846

**Work:** Configuration 15

- Richmond trains run between Richmond and Olympic Park only. Customers travelling to or from the City should change trains **at Parramatta**.
- Trackwork on the City Circle may also affect how customers travel.
- Buses replace City Circle trains between Central and Wynyard via Museum.

Customers travelling to:

- Museum or St James, change at Central for a bus
- Circular Quay, change at Wynyard or Central for a bus



#### Suggested Station Announcements

Good morning/afternoon/evening customers,  
Due to trackwork this weekend, Richmond trains run between Richmond and Olympic Park only. Trackwork on the City Circle may also affect how you travel.  
Check the station trackwork poster, use one of our real time apps or plan your trip at [transportsw.info](http://transportsw.info) to see how these changes affect you.

[Home](#)

## T2 Inner West & Leppington Line

**02:00 Saturday 4 until 02:00 Monday 6 May**

**Reference:** STN 0846

**Work:** Configuration 15

- Buses replace trains between Leppington and Glenfield, and the all-stations trains between Ashfield and Central.
- Buses between Leppington and Glenfield continue to Liverpool.
- Trains run to a changed timetable between Macarthur, Glenfield and North Sydney via Granville.
- Buses also replace T8 Airport & South Line trains between Glenfield and Sydenham.

### Bus routes

**8T2** Leppington, then all stations to Glenfield, then Liverpool and return

**50T2** Lewisham then Petersham, Stanmore, Central and return

**51T2** Ashfield then Summer Hill, Newtown, Central and return

**52T2** Ashfield then all stations to Central (except Macdonaldtown) and return



### Suggested Station Announcements

Good morning/afternoon/evening customers,

Due to trackwork this weekend, buses replace trains between Leppington and Glenfield and the all stations trains between Ashfield and Central. Trains run to a changed timetable between Macarthur, Glenfield and North Sydney via Granville

Check the station trackwork poster, use one of our real time apps or plan your trip at [transportnsw.info](http://transportnsw.info) to see how these changes affect you.

[Home](#)

## T3 Bankstown Line

**Tuesday 30 April until Friday 2 May**

Nightly from 22:10 until 03:50

**Reference:** STN 1309

**Work:** Sefton Park Junctions - Lidcombe

- Buses replace trains between Lidcombe and Bankstown
- Trains run to the normal timetable between Liverpool and Central or between Villawood and Central via Bankstown.

### Bus routes

**8T3** Lidcombe, then all stations to Bankstown (via Regents Park) and return

**02:00 Saturday 4 until 02:00 Monday 6 May**

**Reference:** STN 0846

**Work:** Configuration 2

- Trains run between Lidcombe or Liverpool and Sydenham only.
- Some T4 Eastern Suburbs & Illawarra Line trains make extra stops at Erskineville and St Peters.



### Suggested Station Announcements

Good morning/afternoon/evening customers,

Due to trackwork this weekend, Trains run between Liverpool or Lidcombe and Sydenham only.

Check the station trackwork poster, use one of our real time apps or plan your trip at [transportnsw.info](http://transportnsw.info) to see how these changes affect you.

[Home](#)

## T4 Eastern Suburbs & Illawarra Line

**02:00 Saturday 4 until 02:00 Monday 6 May**

**Reference:** STN 0846

**Work:** Configuration 2 + Hurstville - Sydenham

- All Cronulla and some Waterfall trains make extra stops at Erskineville and St Peters.

[Home](#)

## T5 Cumberland Line

### Monday 29 April and Wednesday 1 May

Nightly from 23:50 until 01:30

**Reference:** STN 0762

**Work:** Granville – Westmead & Granville - Yennora

- Some trains run to a changed timetable between Richmond and Granville, and between Granville and Leppington only.
- Customers may need to change trains at Granville to continue their journey

### 02:00 Saturday 4 until 02:00 Monday 6 May

**Reference:** STN 0846

**Work:** Configuration 2

- Buses replace trains between Leppington and Glenfield, then continue to Liverpool.
- Trains run to the normal timetable between Liverpool and Quakers Hill.
- Early morning and late night trains run between Campbelltown and Richmond.

#### Bus route

**8T2** Leppington, then all stations to Glenfield, then Liverpool and return



#### Suggested Station Announcements

Good morning/afternoon/evening customers,

Due to trackwork this weekend, buses replace trains between Leppington and Glenfield then continue to Liverpool.

Check the station trackwork poster, use one of our real time apps or plan your trip at [transportnsw.info](http://transportnsw.info) to see how these changes affect you.

[Home](#)

## T8 Airport & South Line

### Monday 29 April until Thursday 2 May

Nightly from 23:30 until 04:00

**Reference:** 100-19GM

**Work:** City Inner

- Some trains start and end at Central platform 23
- City Circle trains run in one direction only, from Central first stop Town Hall
- Customers may need to change trains at Central to complete their journey.

### 02:00 Saturday 4 until 02:00 Monday 6 May

**Reference:** STN 0846

**Work:** Configuration 2 + Airport Line

- Buses replace trains between Glenfield and Sydenham, and between Sydenham and Central via the Airport.
- Buses to Airport stations stop at Sydenham, Wolli Creek, International Airport, Domestic Airport, Mascot, Green Square and Central only.
- Trains run to a changed timetable between Macarthur and North Sydney via Granville, and between Campbelltown and Central, platforms 1-12, via Regents Park.
- T4 Eastern Suburbs & Illawarra Line trains run between Sydenham and the City.

#### Bus routes

**22T8** Glenfield, then all stations to Padstow, then Sydenham and return

**23T8** East Hills, then all stations to Turrella, then Sydenham and return (except Wolli Creek and Tempe)

**24T8** Glenfield, then all stations to Kingsgrove (except Holsworthy), then Sydenham and return

**25T8** Glenfield, then Sydenham and return

**60T8** Sydenham, Wolli Creek, International Airport, Domestic Airport, Mascot, Green Square, Central and return)

**61T8** International Airport, Domestic Airport, Central and return

**62T8** Mascot, Green Square then Central and return



#### Suggested Station Announcements

Good morning/afternoon/evening customers,

Due to trackwork this weekend, buses replace trains between Glenfield and Sydenham and between Sydenham and Central via the Airport. Trains operate between Macarthur and North Sydney via Granville and between Campbelltown and Central via Regents Park.

Check the station trackwork poster, use one of our real time apps or plan your trip at [transportnsw.info](http://transportnsw.info) to see how these changes affect you.

[Home](#)

## **T9** Northern Line

**02:00 Saturday 4 until 02:00 Monday 6 May**

**Reference:** STN 0846

**Work:** Configuration 15

- Trains run to a changed timetable, making an extra stop at Croydon.
- Trackwork on the City Circle may affect how customers travel.
- Buses replace City Circle trains between Central and Wynyard via Museum.

Customers travelling to:

- Museum or St James, change at Central for a bus
- Circular Quay, change at Wynyard or Central for a bus

### **City Circle bus routes**

**3CC** Circular Quay to Wynyard and return

**5CC** Central, Museum, St James, Circular Quay and return

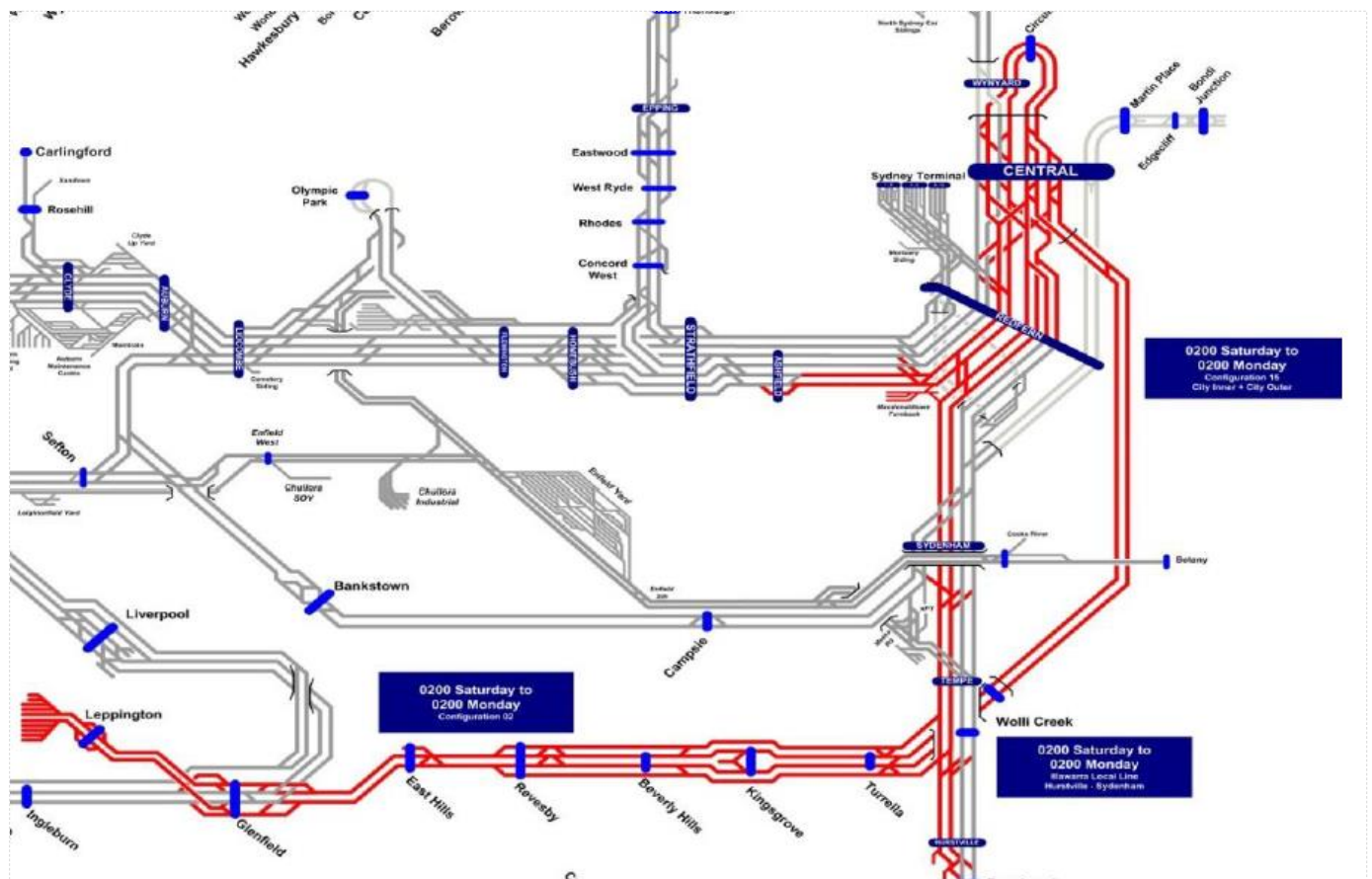
[Home](#)



## Weekend scope of work: Configuration 15 + Airport Line and Configuration 2 + Hurstville – Sydenham

This weekend a combination of capital works programs, major periodic and routine maintenance will take place. Some of the work scheduled is as follows:

- Sydney Metro City & Southwest stage works
- PSU SGT DC Feeders works at Argyle SS
- Airport Line Maintenance works by Broadspectrum
- Track Reconstruction Up Illa Main Central
- Rerailing works City Inner & Petersham
- Track Reconditioning works City Outer
- Drainage works at Redfern Platform
- Bridge Refurbishment at Flying Junctions, Central
- Sydney Metro City & Southwest Sydenham Jct stage works
- Ballast Cleaning works at Narwee
- Track Reconditioning at Padstow
- Bridge Refurbishment Swoos UB Turrella
- Rerailing works at East Hills
- Section Insulator works at Turrella
- Rail and Turnout Grinding
- Plain Track and Turnout Resurfacing
- Corridor Presentation
- OHW, Signal and Track Maintenance
- Overhead wiring, signal and track inspections and other preventative maintenance
- Corridor Presentation: vegetation maintenance and graffiti removal at various locations



## Special Events extract

Updated Special Event details can be accessed on the [Sydney Trains intranet](#)

From	To	Wk	Location	Event	Estimate	Comments	No & Rating	Stn
Tuesday 30/04/19 11:00	Tuesday 30/04/19 18:00	43	Kembla Grange Racecourse	Kembla Grange Races Created: 14/05/18	Crowd: Low Rail: Low	SOUTH COAST LINE All train services on the Up and Down will make an additional stop at Kembla Grange between 1000 and 1900 hours	SE017739 Low	0741-2019
Thursday 02/05/19 19:55	Thursday 02/05/19 21:45	43	ANZ Stadium, Sydney Olympic Park	NRL Round 8, South Sydney v Brisbane Created: 10/11/18	Crowd: 15,000 Rail: 4,000	T7 OLYMPIC PARK LINE The Lidcombe to Olympic Park Sprint will be built up to 8 cars and operate every 10 minutes until 2400 hours CENTRAL TO OLYMPIC PARK Run 142N, the empty 1746 hours Blacktown to Auburn Maintenance Centre train will instead operate to Central Terminal. At Central Terminal, this train will form an Olympic Park service (from Platform 4 or 5) at 1850 hours stopping Redfern, Strathfield and Olympic Park STAND BY TRAIN 1 x 8 car train will be placed on stand by at Olympic Park Platform 1 between 2130 hours and 0130 hours *Rail Integrated Ticketing Event	SE019124 Low	0743-2019
Friday 03/05/19 20:00	Friday 03/05/19 22:00	44	Shark Park, Woolooware	NRL Round 8, Cronulla- Sutherland v Melbourne Created: 10/11/18	Crowd: 17,000 Rail: 1,500	T4 ILLAWARRA LINE 621S, the empty 2216 hours Cronulla to Hurstville service will instead operate as a passenger train stopping all stations	SE019132 Low	0844-2019
Saturday 04/05/19 09:00	Sunday 05/05/19 17:00	44	Illawarra Regional Airport, Albion Park	Wings Over Illawarra Created: 07/05/18	Crowd: 20,000 per day Rail: 1,500 per day	TRAIN ARRANGEMENTS FOR SATURDAY AND SUNDAY BUILD UPS All South Coast trains stopping at Albion Park between 0800 and 1800 hours will consist of 8H or 8T sets All Down Trains will operate via Number 1 Platform at Albion Park  ADDITIONAL SERVICES Three additional trains to Bondi Junction will depart Albion Park at 1455, 1550 and 1650 hours. These trains will stop Dapto, Unanderra, Coniston, Wollongong, North Wollongong, Thirroul, Helensburgh, Waterfall, Sutherland, Hurstville, Wolli Creek, Redfern, Central then all stations to Bondi Junction  STAND BY TRAIN 1 x 8 car stand by train will be placed at Wollongong between 0800 and 1800 hours	SE017664 Low	0846-2019
Saturday 04/05/19 20:00	Saturday 04/05/19 21:50	44	Sydney Cricket Ground, Moore Park	NRL Round 8, Sydney Roosters v Wests Tigers	Crowd: 18,000 Rail: 2,000	No Alterations Required	SE019023 Low	-

From	To	Wk	Location	Event	Estimate	Comments	No & Rating	Stn
Sunday 05/05/19 00:00	Sunday 05/05/19 00:00	44	St Ives	Festival on the Green Created: 18/12/18	Crowd: Unknown Rail:	No Alterations Required	SE019543 Low	-
Sunday 05/05/19 00:00	Sunday 26/05/19 00:00	44, 47	Meadowbank Station	Cork and Fork (date TBC, Sunday in May) Created: 06/12/18	Crowd: Unknown Rail:	No Alterations Required	SE019430 Low	-
Sunday 05/05/19 06:00	Sunday 05/05/19 18:00	44	Leura Business District	Leura Harvest Festival Created: 11/12/17	Crowd: 3,000 Rail: 300	No Alterations Required	SE016462 Low	-
Sunday 05/05/19 16:00	Sunday 05/05/19 18:00	44	Western Sydney Stadium, Parramatta	NRL Round 8, Parramatta v St George-Illawarra	Crowd: 31,000 Rail: 2,000	No Alterations Required	SE018983 Low	-



## Next week's trackwork

Summary of trackwork affecting Sydney Trains services  
Monday 6 May to Sunday 12 May



### City Circle

#### 02:00 Saturday 11 and 02:00 Monday 13 May

- Trains run in one direction only, from Central first stop Museum.
- Some City Circle trains run to a changed timetable and leave from different platforms

### T1 North Shore Line

#### Wednesday 8 and Thursday 9 May Nightly from 23:20 until 01:40

- Buses replace trains between Berowra and Hornsby.

#### 02:00 Saturday 11 and 02:00 Monday 13 May

- Trains run between Berowra and Wynyard, and between Lindfield and North Sydney only.
- Trains from Wynyard run around the City Circle in one direction only, from Wynyard, first stop Town Hall.
- Buses replace trains from Town Hall to Wynyard and Circular Quay, in that direction only.

### T1 Western Line

#### 02:00 Saturday 11 and 02:00 Monday 13 May

- Penrith trains run to a changed timetable between Penrith and the City Circle, from Central first stop Museum.
- Trains make an extra stop at Ashfield.
- Richmond trains run between Richmond and Olympic Park only.
- On Saturday from 22:00 until 05:00 Penrith trains start and end at Central, platforms 1-12 and make additional stops at Homebush and Burwood

### T2 Inner West & Leppington Line

#### 02:00 Saturday 11 and 02:00 Monday 13 May

- Buses replace trains between Fairfield and Glenfield, then continue to Macarthur.
- Trains run to a changed timetable between Fairfield and Central, platforms 1-12, and will not stop at Ashfield.
- On Saturday from 22:00 until 05:00 buses also replace the all stations trains between Strathfield and Central. T1 Penrith trains make extra stops at Homebush and Burwood

### T3 Bankstown Line

#### 02:00 Saturday 11 and 02:00 Monday 13 May

- Buses replace trains between Liverpool and Bankstown.
- Trains run between Lidcombe, Bankstown and Sydenham only, some to a changed timetable.
- On Saturday from 22:00 until 05:00 Trains extend to the City Circle, stopping at St Peters, Erskineville and Redfern then the City Circle, from Central first stop Museum

### T4 Eastern Suburbs & Illawarra Line

#### 02:00 Saturday 11 and 02:00 Monday 13 May

- All Cronulla and some Waterfall trains make extra stops at Erskineville and St Peters.

### T5 Cumberland Line

#### 02:00 Saturday 11 and 02:00 Monday 13

- Buses replace trains between Fairfield and Glenfield, then continue to Macarthur.
- Trains run to a changed timetable between Leppington and the City via the T8 Airport & South Line and between Quakers Hill and Lidcombe, then Olympic Park.
- Early morning and evening trains run between Richmond and Fairfield

## **T7** Olympic Park Line

### **02:00 Saturday 11 and 02:00 Monday 13 May**

- Trains run to a changed timetable between Olympic Park and Lidcombe, continuing to Quakers Hill or Richmond.
- The shuttle train between Lidcombe and Olympic Park will not run.

## **T8** Airport & South Line

### **02:00 Saturday 11 and 02:00 Monday 13 May**

- Buses replace trains between Macarthur and Glenfield, then continue to Fairfield.
- Revesby trains run between Revesby and Central, platform 23, via the Airport.
- Macarthur trains run to a changed timetable and stopping pattern between Leppington and the City.
- Trains towards the City run from Leppington to the City Circle via the Airport. Trains from the City run to Leppington via Sydenham.
- Some morning and evening trains run between Leppington and Central, platform 23, via the Airport

## **T9** Northern Line

### **02:00 Saturday 11 and 02:00 Monday 13 May**

- Trains run between Hornsby and Central, platforms 1-12 only.
- T1 North Shore Line trains run between Berowra and Wynyard only.
- City Circle trains run in one direction only, from Central first stop Museum

[Home](#)

## Next week's trackwork

Summary of trackwork affecting NSW TrainLink Intercity services  
Monday 6 May to Sunday 12 May



### Central Coast & Newcastle Line

**Wednesday 8 and Thursday 9 May** Nightly from 22:00 until 03:00

- Buses replace trains between Gosford and Hornsby
- Trains run between Newcastle Interchange and Gosford, and between Hornsby and Central, some to a changed timetable.

### South Coast Line

**Tuesday 7 to Thursday 9 May** From 22:00 until 05:10

- Buses replace trains between Bomaderry and Kiama.
- Buses depart stations Bomaderry to Gerringong up to 17 minutes earlier than the normal train timetable.
- Trains run to the normal timetable between Kiama and Central

### Southern Highlands Line

**Friday 10 May**

- From 20:00 until 02:00, buses replace trains from Moss Vale to Campbelltown.
- From 21:50 until 02:00, buses replace trains from Campbelltown to Moss Vale

**02:00 Saturday 11 and 02:00 Monday 13 May**

- Buses replace trains between Goulburn, Moss Vale and Campbelltown.
- Some buses also run between Moss Vale and Central.
- Buses also replace T8 Airport & South Line trains between Macarthur and Glenfield

[Home](#)

## Sydney and Intercity trains

## Feedback form

Please use this feedback form to advise of any issues in regards to trackwork information advertised internally to staff or externally to our Sydney Trains and NSW TrainLink Intercity customers.

Feedback is sought in regards to trackwork signage, Special Train Notices (STN), website information, customer train or bus timetables or alternative transport arrangements.

The purpose of this trackwork debrief is to improve the service we provide to our customers during future track possessions. All Sydney Trains and NSW TrainLink staff are encouraged to complete this form when required.

**Station/location:** \_\_\_\_\_

Date: \_\_\_\_\_

**Your name:** \_\_\_\_\_

**Phone number:** \_\_\_\_\_

## Feedback

Please provide as much information as possible:

- what went well, what didn't, how this affected our customers or how you feel we could improve
- include STN, bus route number, bus company, trackwork poster/signage details or URL details

Please add additional pages if required.

[illegible]

**Please scan/email the completed feedback form to [nicole.stapleton@transport.nsw.gov.au](mailto:nicole.stapleton@transport.nsw.gov.au)**