



Transport Access Program

Edgecliff Station Upgrade

COMMUNITY NOTIFICATION

JULY 2019

Last month we made great progress on the project, by opening the new access ramp on New McLean Street and completing the bus canopy extension.



Image: Ramp newly opened and in use.

Project update and changes to pedestrian access

Escalators 3 and 4

The replacement of the escalators is underway and nearing completion.

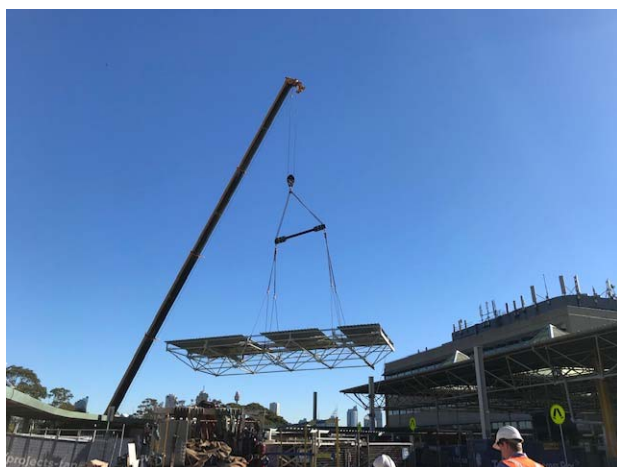
Lift 2 (between the station platform and concourse)

Works on the lift are nearing completion, with final testing being conducted this month.

For more information call 1800 684 490,
Email projects@transport.nsw.gov.au or visit transport.nsw.gov.au/projects-tap
For urgent enquiries or complaints regarding construction activities, please call 24 hours 1800 775 465

Bus canopy extension

The bus interchange canopy extension is now complete. The craneage of canopy sections was an intricate process requiring strategic planning but was executed successfully. The extension will provide more shade and greater weather protection for those using the bus interchange.



Images: Bus Canopy craneage installation

New McLean Street ramp and kiss and ride facility

The New McLean Street ramp is now open to the public. The ramp has undergone a complete removal and rebuild in order to meet Disability Standards for Accessible Public Transport (DSAPT). A designated kiss and ride zone with sheltered seating, bicycle racks, kerb replacement and pram ramps has also been completed. Due to road congestion and a lack of available space on New South Head Road, New McLean Street was determined to be the safest location for a kiss and ride zone.

Thank you to the community

As the job nears completion, we reflect on the positive impact the works will have on customer experience at Edgecliff Station. Transport for NSW and Degnan Constructions would like to thank the community for their continued support and cooperation during the Edgecliff Station Upgrade.

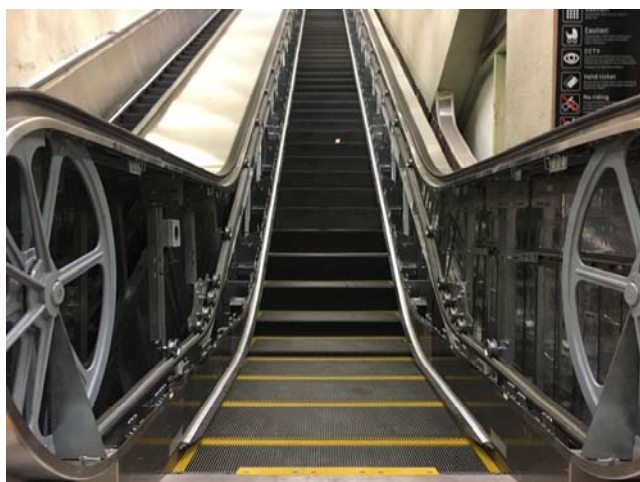
Construction hours

Standard construction hours are **7am to 6pm, Monday to Friday, and 8am to 1pm, Saturday**. Works during these hours will occur behind the hoardings or temporary fencing.

Out of hours works

Night works will continue within station areas between **8pm and 5am, Sunday through Thursday** throughout the early period of July. Noise monitoring will be undertaken to ensure predicted noise levels are adhered to and that appropriate mitigation measures are in place.

There will be some minor elevated noise levels around the station and in particular New Mclean Street at the kiss and ride during the final site works as construction material and equipment is removed from the station and bus interchange areas. There will be additional work vehicles as cleaning crews ensure the areas are provided back to the public in good condition.



Images: Escalator 3 & 4 construction progress

For more information call **1800 684 490**,
Email projects@transport.nsw.gov.au or visit transport.nsw.gov.au/projects-tap
For urgent enquiries or complaints regarding construction activities, please call 24 hours **1800 775 465**

Keeping in touch

Project notifications and information can be accessed on the project website found at: <https://www.transport.nsw.gov.au/projects/current-projects/edgecliff-station-upgrade>. For further information on the project, please call the Project Infoline on **1800 684 490** or email projects@transport.nsw.gov.au.



This document contains important information about public transport projects in your area. If you require the services of an interpreter, please contact the Translating and Interpreting Service on 131 450 and ask them to call Transport for NSW on (02) 9200 0200. The interpreter will then assist you with translation.

French Ce document contient des informations importantes sur les projets de transport public dans votre région. Si vous avez besoin de Services d'un interprète, veuillez contacter le service de traduction et d'interprétation au 131 450 et leur demander de Appelez Transports pour NSW le (02) 9200 0200. L'interprète vous aidera alors à traduire.

Chinese (Traditional) 這份文件包含你所在地區公共交通工程項目的重要信息。如果你需要傳譯服務，請致電翻譯與傳譯服務機構，電話131 450，要求他們為你接通交通部(Transport Projects)，電話是 (02) 9200 0200。傳譯員會為你做翻譯。

Spanish El presente documento contiene información importante sobre proyectos de transporte público en su área. Si requiere los servicios de un intérprete, llame al Translating and Interpreting Service al 131 450 y pídale que llamen a Transport Projects, teléfono: (02) 9200 0200. Luego el intérprete le ayudará con la traducción.

Italian Il presente documento contiene importanti informazioni sulle iniziative nel campo del trasporto pubblico nella vostra zona. Se desiderate i servizi di un interprete, contattate il Servizio traduzioni e interpreti al numero 131 450 indicando di voler parlare con Transport Projects al numero (02) 9200 0200. L'interprete vi aiuterà a condurre la conversazione telefonica.

Delivered by Degnan Constructions