

Redfern Station Upgrade - New Southern Concourse

Frequently Asked Questions – July 2019



The newly upgraded entrance to Redfern Station on Gibbons Street

What is the Redfern Station Upgrade – New Southern Concourse?

Transport for NSW is upgrading Redfern Station to make it easier for all customers to access. The upgrade proposes to construct a new concourse at the southern end of the station, which will provide:

- easy access to Platforms 1 to 10 with six new lifts and stairs
- better connectivity with the surrounding areas including key destinations such as South Eveleigh (formerly known as Australian Technology Park), Carriageworks, education and health centres

Upgrading Redfern Station is the first step in renewing the Redfern and North Eveleigh precinct.

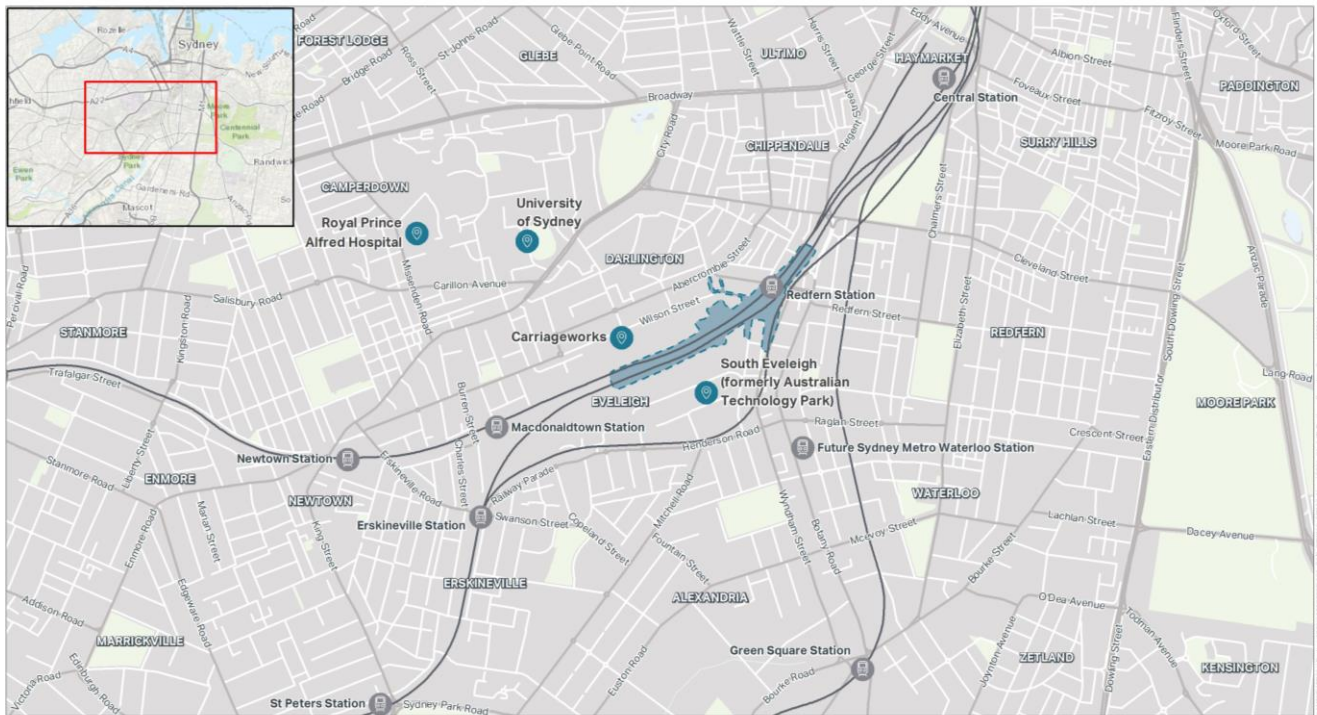
Why do we need to upgrade Redfern Station?

Redfern Station is an important destination and the sixth busiest on the rail network, servicing the community, a technology park, education centres and businesses. Transport for NSW understands that with the current and expected growth in the precinct, the station needs an upgrade.

The construction of a new concourse will:

- improve pedestrian connections and flow in and around the station, including those with limited mobility
- reduce congestion
- cater to the growing needs of the South Eveleigh and surrounding precincts
- provide a direct link to Marian Street and Little Eveleigh or Wilson Street from Platforms 1 to 10

By connecting platforms to Little Eveleigh or Wilson Street and expanding the existing Marian Street entrance, customers and the community will also have improved access to their homes and workplaces, as well as the many local shops and community facilities.



PROJECT OVERVIEW AND LOCATION - INDICATIVE ONLY

Legend

Station

Key Precinct

Indicative project construction area (including site access and work such as services and utilities relocation).
Investigations are being undertaken on how the concourse can be integrated with the surrounding area.

Sources: Esri, HERE, DeLorme, Intermap, increment P Corp., GEBCO, USGS, FAO, NPS, NRCAN, GeBCO, IGN, Esri, Swisstopo, Swisstopo, Esri, Japan, METI, Esri, China (Hong Kong), Swisstopo, © OpenStreetMap contributors, and the GIS User Community. Imagery © Esri, 2019.

Redfern Station is one of the busiest stations on the network and plays an important role in connecting this precinct regionally.

What is proposed as part of the upgrade?

The plans include a new concourse at the southern end of the station. This would provide easy access to Platforms 1 to 10 with six new stairs and lifts and better connectivity with the surrounding area, including key destinations such as South Eveleigh, Carriageworks, health and education centres.

Has Transport for NSW consulted community and station users about the station upgrade?

During May and June 2019, Transport for NSW consulted on the early concept plan for the Redfern Station Upgrade – New Southern Concourse. Newsletters were distributed to local residents and businesses and handed out to customers at the station. The community was also able to meet the project team at three information sessions at Redfern Station. We also met with a number of community and stakeholder groups. A project web page was established which included an online survey.

Transport for NSW thanks the local community for their feedback on the early concept plan, as well as everyone who took the time to meet and speak with us. Transport for NSW received a large amount of feedback. Key themes heard during consultation included:

- General support for improving accessibility and relieving congestion at Redfern Station
- Interface of station concourses with future precinct development
- Questions about other options considered during the early design process
- Request to consider options for bicycle access across the concourse and connections with the City of Sydney's bicycle routes
- Engagement with the Aboriginal and Torres Strait Islander communities, including opportunities for workforce participation.
- Traffic and pedestrian management on Little Eveleigh Street
- Traffic and pedestrian management on Marian/Cornwallis Streets
- Lift access to Platforms 11 and 12
- Opportunities for ongoing community feedback into the design process



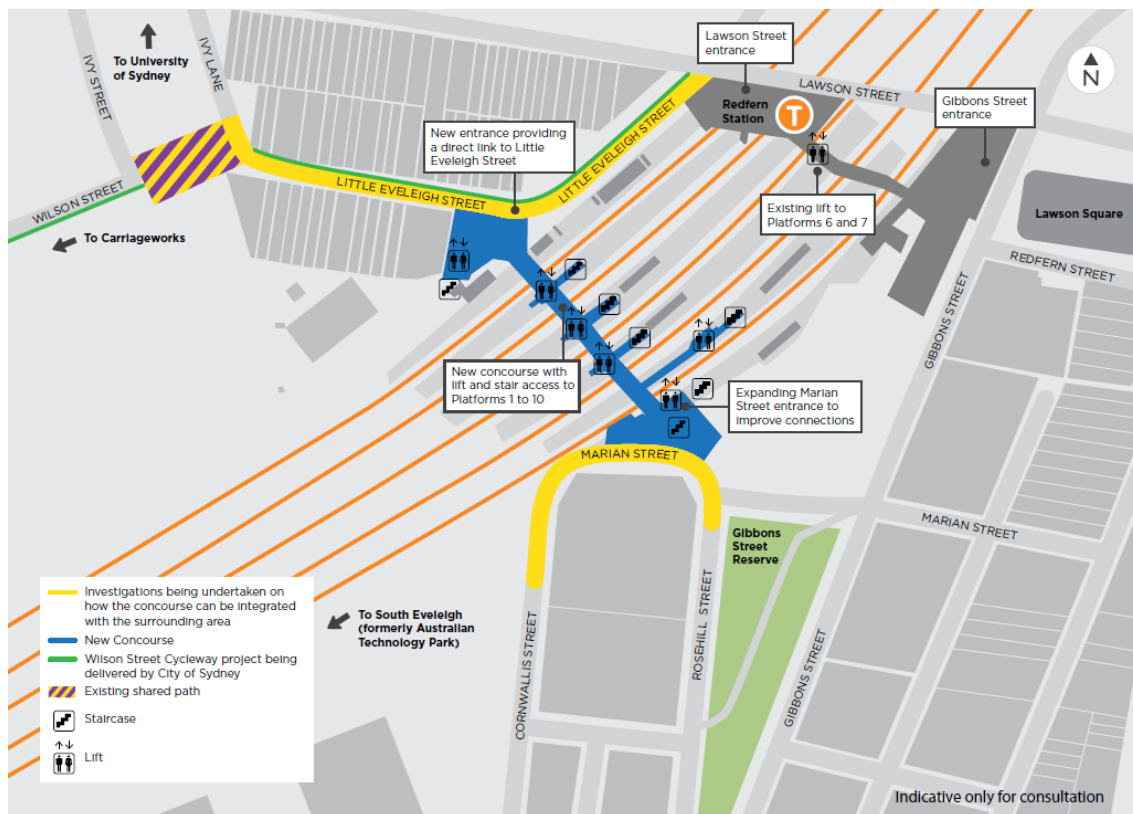
An information session held at Redfern Station

What concourse design options has Transport for NSW considered?

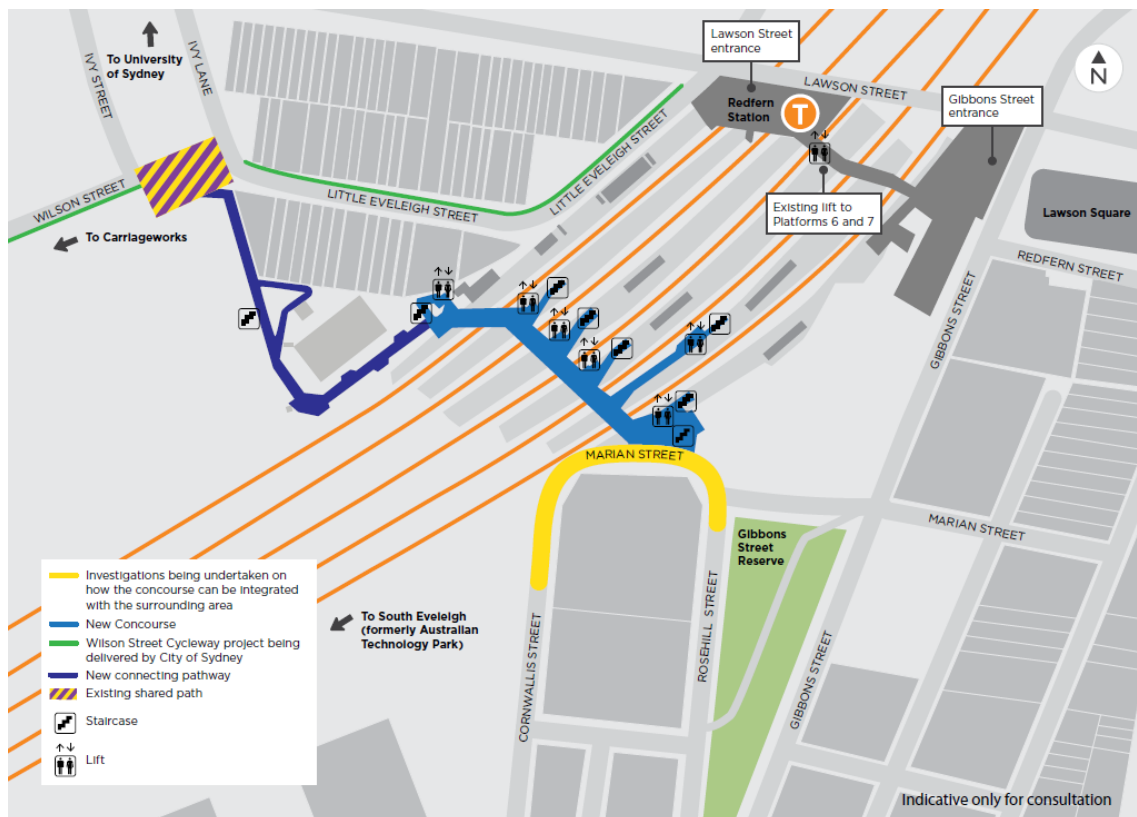
Transport for NSW has considered a number of potential designs for the new concourse. All designs must provide lift and stair access to platforms 1-10. A major constraint is the narrow platforms at the station's southern end, which means that lifts and stairs cannot be safely positioned there. As a result, any concourse design would have to be placed closer to the middle of the platforms. As well, the station is state heritage listed and there are a number of significant buildings within the station and surrounding precinct, including on the platforms. For heritage protection reasons, it is important that impacts to heritage are minimised.

Options 1 to 3 (see plans below) are considered feasible designs that meet these requirements. More information about these options is included in the latest project [newsletter](#).

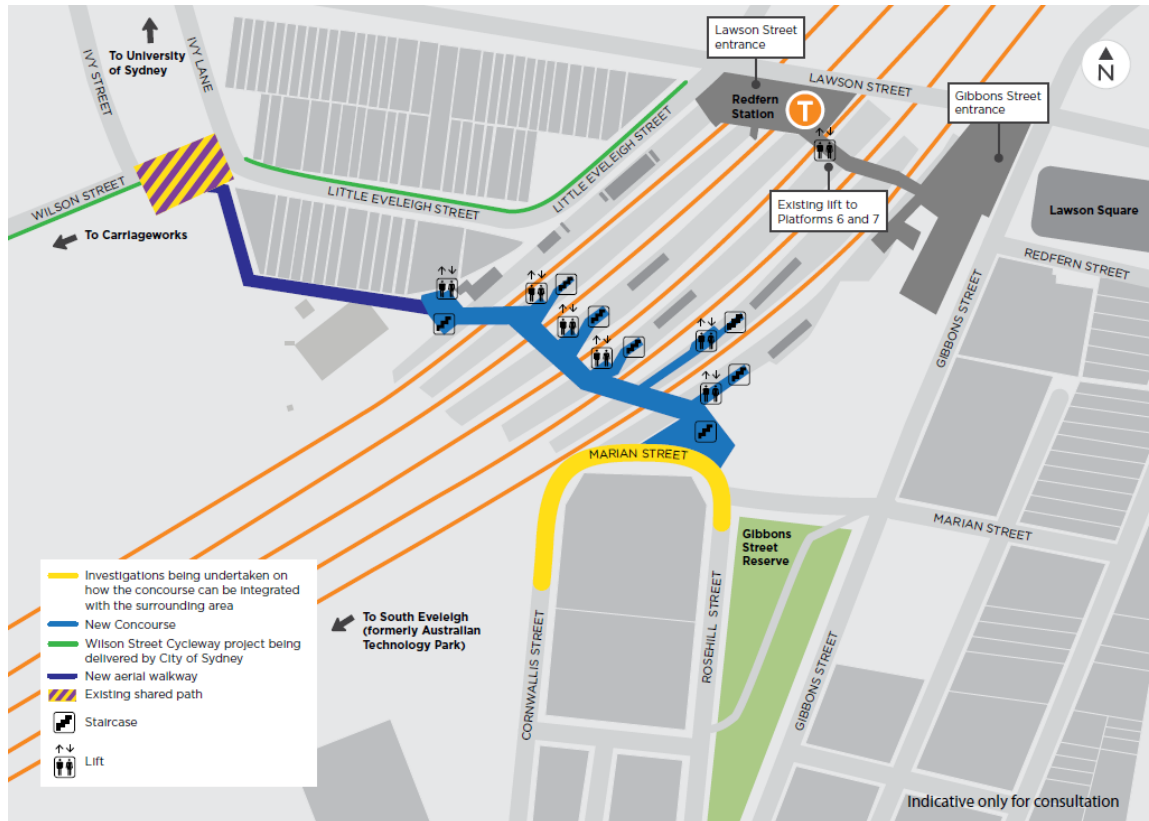
Option 1 – Little Eveleigh Street Connection



Option 2 – Ground level pathway (Wilson Street Connection)



Option 3 – Aerial walkway (Wilson Street Connection)



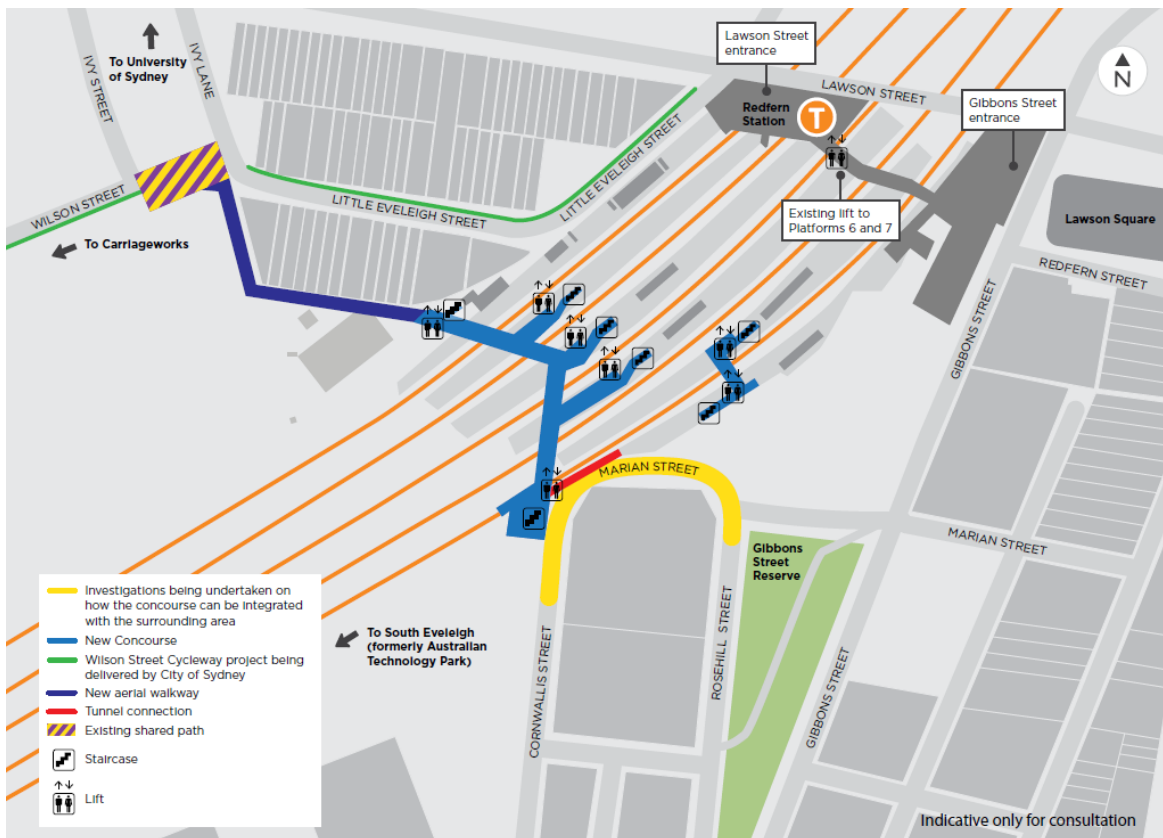
Where would the Option 1 (Little Eveleigh Street) northern concourse entrance be located?

Option 1 would require the concourse at the northern side of the station to land approximately in the area occupied by 125-127 Little Eveleigh Street. This land is owned by the NSW Government, which would require The Big Issue to permanently relocate from the premises it currently occupies under licence from the Government. The Government acknowledges the importance of the services provided by The Big Issue and would work with the organisation over the next 12 months to identify suitable alternative premises for their Sydney office.

Can the new concourse's southern entrance be located in South Eveleigh, to avoid pedestrian congestion on Marian Street?

In response to community feedback, Transport for NSW has further explored design options for a station entrance in South Eveleigh, which would bring passengers closer to the workplaces in that precinct while reducing pedestrian movements on Marian Street.

Option 4 – South Eveleigh to Wilson Street Connection



This option would connect Cornwallis Street to Wilson Street. Lifts and stairs would be provided to Platforms 1 to 7 from the new southern concourse with additional bridge extensions. Platforms 8 to 10 would be accessed from a separate footbridge with a tunnel connection to the concourse. This would require users from the northern side of the concourse to make an indirect journey to access Platforms 8 to 10 via the new, accessible concourse. While the entrance in South Eveleigh would be convenient for passengers travelling to that precinct, it would be less convenient for passengers whose destinations are in Redfern centre, or who would want to connect to bus services on Gibbons Street. This option could also result in passengers having to make more interchanges, which would be less desirable for passengers with disabilities or limited mobility.

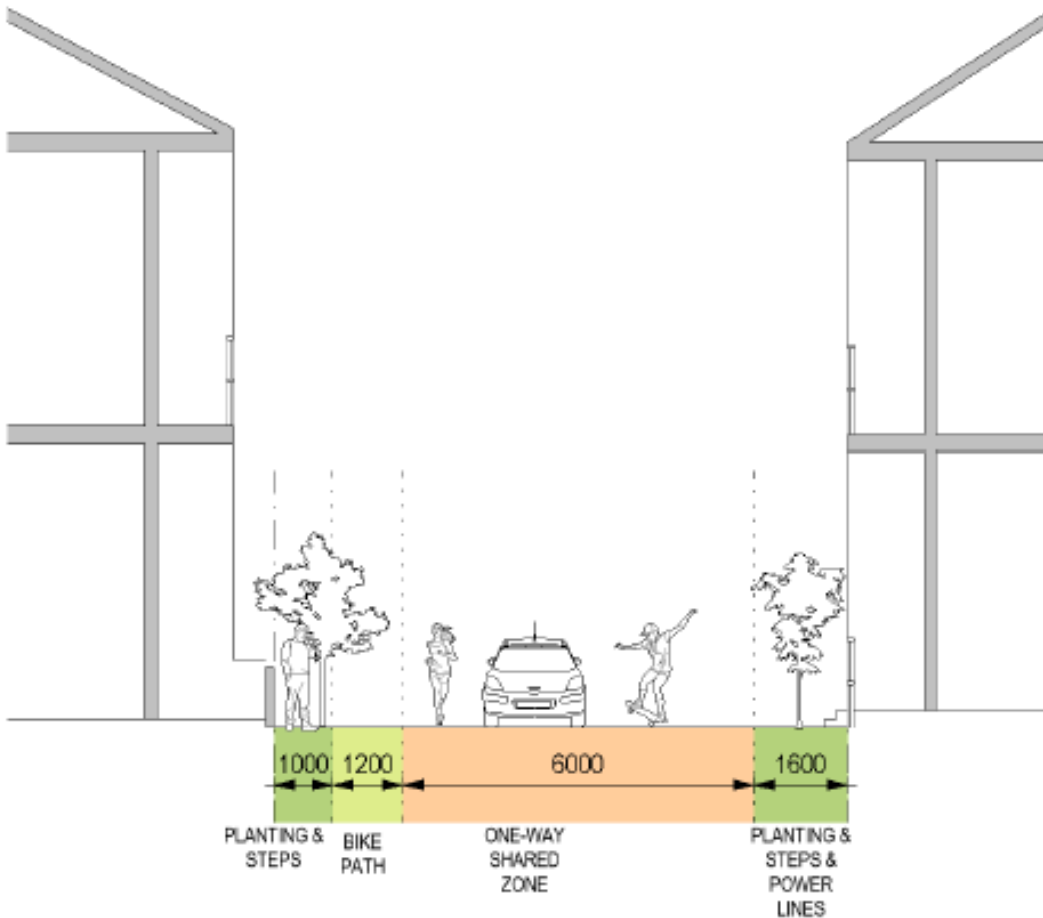
Are there any early plans for Little Eveleigh Street?

Transport for NSW are still in the early phases of design for the new concourse and are currently investigating how it could be integrated with the surrounding area if this option was progressed.

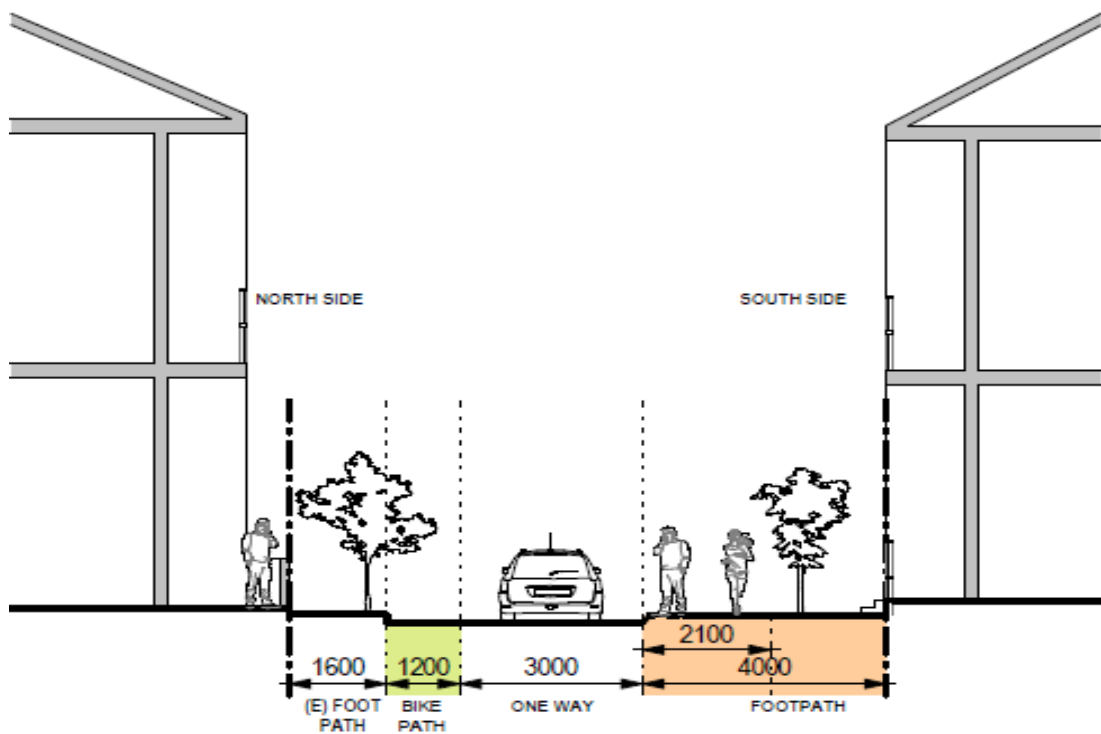
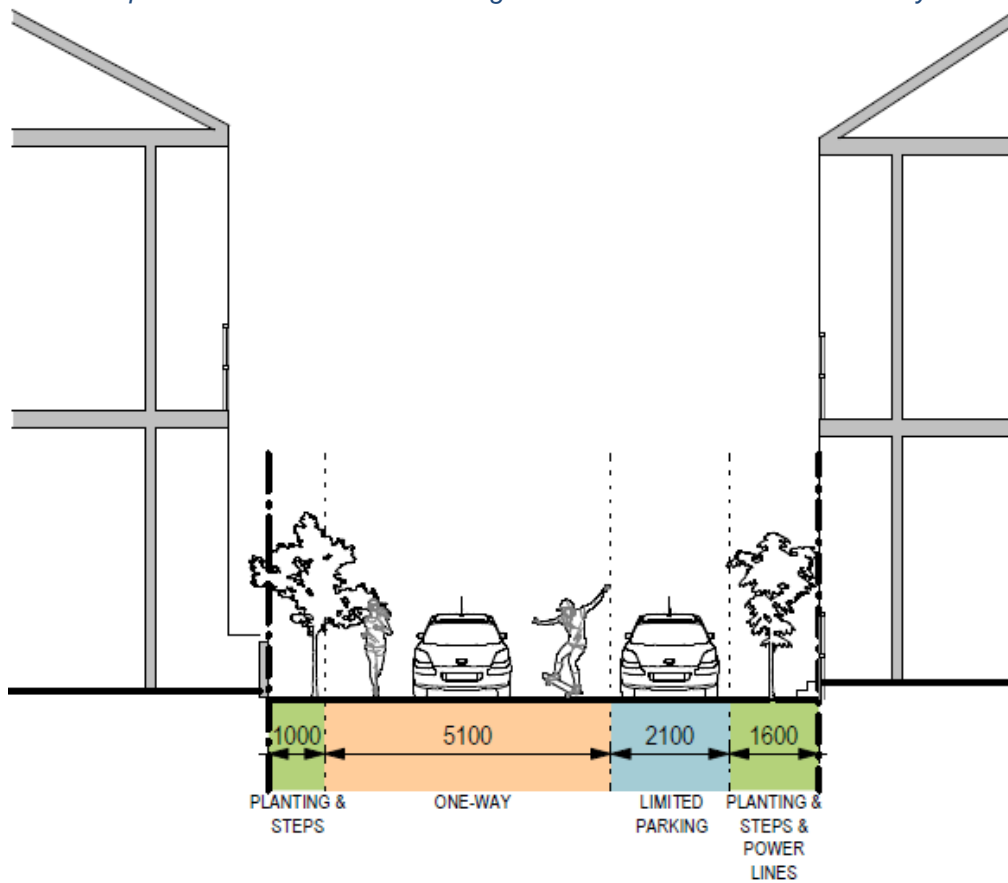
The safety of pedestrians, motorists, cyclists and local residents will be at the forefront of the design. To inform the concept design, pedestrian modelling and a Road Safety Audit are being undertaken for surrounding streets, including Little Eveleigh Street. Traffic and pedestrian movements as well as parking will be considered in consultation with City of Sydney Council and key stakeholders, which will help to address some of the issues that were raised in the first round of consultation.

Artist's impressions for how Little Eveleigh Street could look (should the concourse entrance be located on that street) are shown on the following pages. These are indicative only, and Transport for NSW would continue to consult with residents and stakeholders during design development.

Artist's impressions of how Little Eveleigh Street could look. Indicative only for consultation.



Artist's impressions of how Little Eveleigh Street could look. Indicative only for consultation.



Are there any early plans for Marian Street?

Transport for NSW are still in the early phases of design for the new concourse and are currently investigating how it can be integrated with the surrounding area.

The safety of pedestrians, motorists, cyclists and local residents will be at the forefront of the design. To inform the concept design, pedestrian modelling and a Road Safety Audit are being undertaken for surrounding streets, including Marian Street. Traffic and pedestrian movements as well as parking will be considered in consultation with City of Sydney Council and key stakeholders, which will help to address some of the issues that were raised in the first round of consultation.

An artist's impression for how Marian Street could look is shown below. This is indicative only, and Transport for NSW would continue to consult with residents and stakeholders during design development.



Artist's impression of how Marian Street could look. Indicative only for consultation.

Will the new concourse provide a free connection across the rail corridor?

We are investigating options for allowing pedestrians to access the concourse without needing an Opal Card.

Generally station concourses have ticket gates at each entrance, to reduce the risk of fare evasion and revenue loss. Should ticket gates be installed, pedestrians would still be able to tap on and off with their Opal Cards without payment if they wanted to use the concourse as a walkway.

Will the new concourse provide a cycling connection?

We are looking into ways to provide better cross-corridor connections for cyclists, both as part of the Redfern Station Upgrade project and the precinct renewal project. Bike parking is proposed at both concourse entrances. Transport for NSW will also work with City of Sydney Council to ensure that the concourse is integrated with the local cycling network, which will include a City of Sydney Council cycle path that will cross the rail corridor on Lawson Street.

What happens next?

In addition to the Little Eveleigh Street option we consulted on in May and June, Transport for NSW is also seeking feedback on the other options that have been considered during the early design development. Feedback can be provided by emailing projects@transport.nsw.gov.au or by completing our online survey (yoursay.transport.nsw.gov.au).

The new concourse is a much-needed piece of infrastructure. The feedback from community consultation, along with other considerations such as precinct development, constructability, customer outcomes, and operability, will inform Transport for NSW's choice of its preferred design option. Transport for NSW will then commence the planning approval process for the project.

Transport for NSW will continue to engage with the community and stakeholders over the coming months to further inform the project's design. For more information please visit transport.nsw.gov.au/projects.

How is the project being delivered?

Upgrading Redfern Station is the first step in renewing the Redfern and North Eveleigh Precinct. The accessibility upgrade is being made possible through the NSW Government's Transport Access Program, an initiative to deliver accessible, modern and secure public transport infrastructure across the state.

What is planned for an accessibility upgrade to Platforms 11 and 12?

Preliminary investigation work is currently underway to help identify what accessibility improvements can be delivered on Platforms 11 and 12 which service the T4 Eastern Suburbs and Illawarra Lines. As this is an underground section of the station there are additional complexities which need to be carefully considered. This includes how we limit the impact to existing structures and how we would stage complex excavation and construction work while minimising the impact on station operations and customers. This work will continue to be assessed as part of future upgrades to the station.

How will you engage with the Aboriginal community?

Redfern Station has important ties to the local Aboriginal community. The station has historically served as an important transport connector between this local community and Aboriginal people from other areas of NSW. Working with the local Aboriginal and Torres Strait Islander community to identify ways in which they can be involved in the project will be an important element of the successful delivery of this project. We are already engaging with stakeholders to progress this.

How will you protect heritage items in Redfern Station?

Transport for NSW is proud of Redfern Station's heritage significance. Redfern Station owes its unique character to its historic buildings, surrounding industrial land use and Aboriginal heritage.

Consultation is ongoing with Heritage in the Department of Premier and Cabinet (formerly the Office of Environment and Heritage) and following selection of a preferred option, Transport for NSW would apply for relevant planning and heritage approvals. The community and key stakeholders would also be consulted on how we could enhance the station's heritage.

What is happening with the Redfern and North Eveleigh Precinct?

With Redfern Station at its core, the Redfern and North Eveleigh Precinct includes 10 hectares of land along the rail corridor. The precinct is positioned to become a future destination for all, with a range of housing, workspaces and new public spaces that will promote healthy and sustainable lifestyles. There will be opportunities for the community to provide input into the initial vision for the precinct.

Where can more information be found about the project?

For more project information visit: transport.nsw.gov.au/redfern.

Project updates and feedback can also be received by contacting **1800 684 490** or at projects@transport.nsw.gov.au with your request.

For more information on the Redfern and North Eveleigh Precinct Renewal visit transport.nsw.gov.au/projects/current-projects/redfern-and-north-eveleigh-precinct-renewal.



This document contains important information about public transport projects in your area. If you require the services of an interpreter, please contact the Translating and Interpreting Service on **131 450** and ask them to call Transport for NSW on **(02) 9200 0200**. The interpreter will then assist you with translation.