



Power Supply Upgrade Program

Mount Kuring-Gai

COMMUNITY NOTIFICATION

OCTOBER 2019

Transport for NSW is upgrading electrical infrastructure as part of the Power Supply Upgrade Program, which is designed to meet expected power requirements for Sydney's future rail network and new fleet of air-conditioned trains.

Upcoming activities

Between 6am Saturday 26 October and 6am Monday 28 October, we will continue works to install a new sectioning hut inside the rail corridor at Mount Kuring-Gai. Works also involve decommissioning a redundant power pole in the rail corridor and installing a low voltage cable across the old Pacific Highway.

Sectioning Hut Installation – Saturday 26 October and Sunday 27 October

A sectioning hut will be installed over the weekend of Saturday 26 October and Sunday 27 October. Major works to install this new sectioning hut are scheduled to occur **between 9pm Saturday 26 October and 5am Sunday 27 October**. A new low voltage cable will also be installed across old Pacific Highway, Mount Kuring-gai during these night works.

A large crane will be on site to lift the sectioning hut into the rail corridor, requiring lane closures on the old Pacific Highway.

In the event that weather or external factors do not make it possible to complete the installation of the sectioning hut on Saturday 26 October, contingency works are planned for between 6pm Sunday 27 October and 6am Monday 28 October.

To ensure the safety of our customers and staff, this work will be completed during a scheduled Sydney Trains track work weekend. Train services will be affected during weekend works. Please contact Transport Info on **131 500** or visit **www.transportnsw.info** for more information about replacement bus services.

What you may notice

Temporary lane closures

Between 9pm Saturday 26 October and 5am Sunday 27 October, three out of four lanes on the old Pacific Highway will be closed. A contraflow arrangement will exist during this period to cater for traffic travelling in the northbound and southbound directions. Traffic delays may be experienced.

If the contingency evening is required, three out of the four lanes on the old Pacific Highway will be closed between 8pm Sunday 27 October and 3am Monday 28 October. A contraflow arrangement will exist during this period to cater for traffic travelling in the northbound and southbound directions. Traffic delays may be experienced.

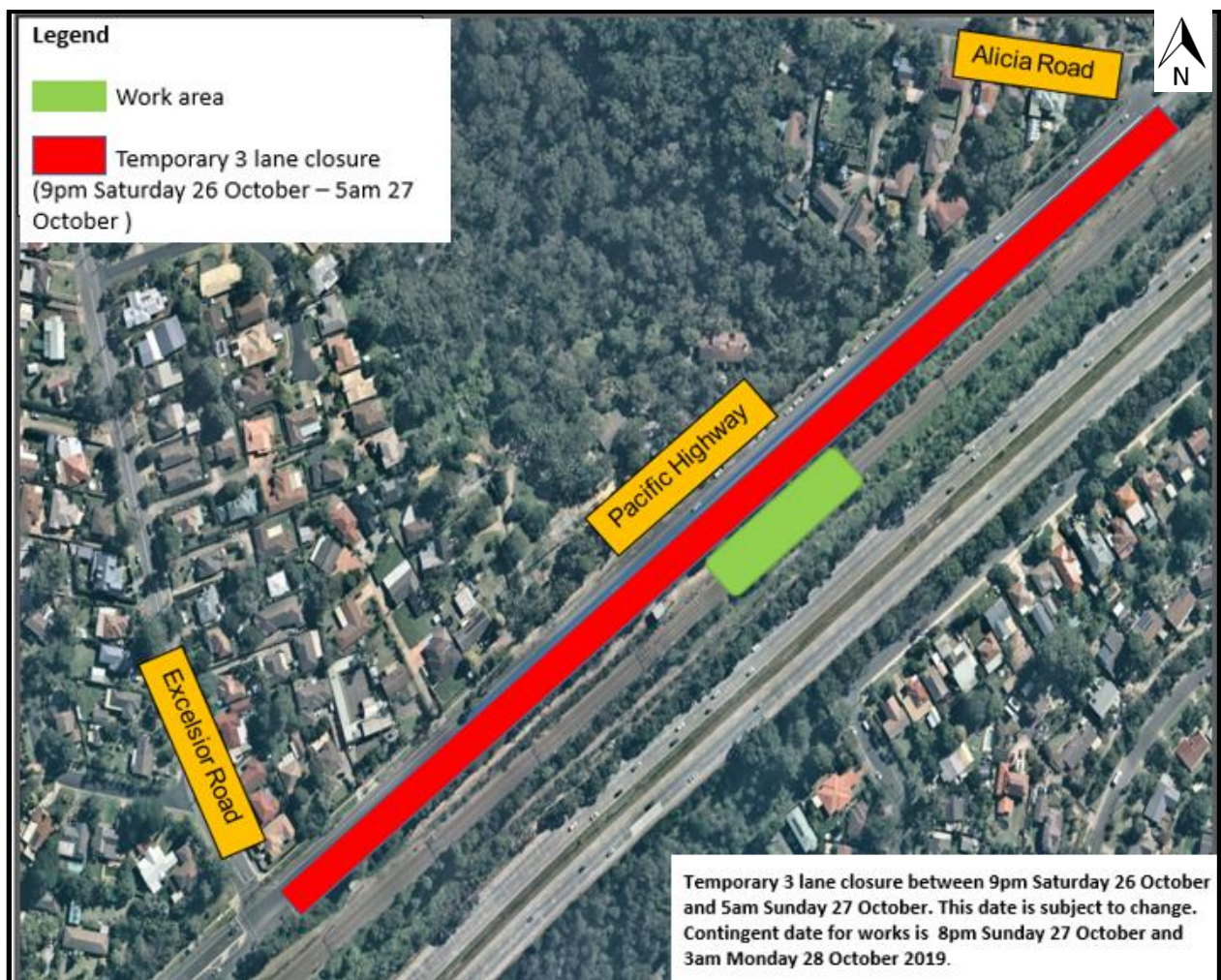
Please allow additional time to travel through the area. Traffic controllers and electronic sign boards will be in place to provide directions to motorists and pedestrians.

Construction equipment

Equipment to be used during the work activities include a cherry picker, concrete pump, vacuum truck, excavator, cranes, semi-trailers, work vehicles and various hand and power tools.

Transport for NSW is committed to minimising noise impacts on the community. We switch off equipment when it is not being used, place equipment as far away from properties as possible and monitor our work activities to make sure noise levels are being managed effectively.

Map of work area



Keeping the community informed

If you would like to speak with the project team about these works, please contact us through the details provided below. Thank you for your understanding during these works.



This document contains important information about public transport projects in your area. If you require the services of an interpreter, please contact the Translating and Interpreting Service on **131 450** and ask them to call Transport for NSW on **(02) 9200 0200**. The interpreter will then assist you with translation.

For more information call **1800 684 490**,
Email projects@transport.nsw.gov.au or visit transport.nsw.gov.au/projects
For urgent enquiries or complaints regarding construction activities, please call 24 hours **1800 775 465**