



# Transport Access Program

## Prairiewood T-Way Car Parks

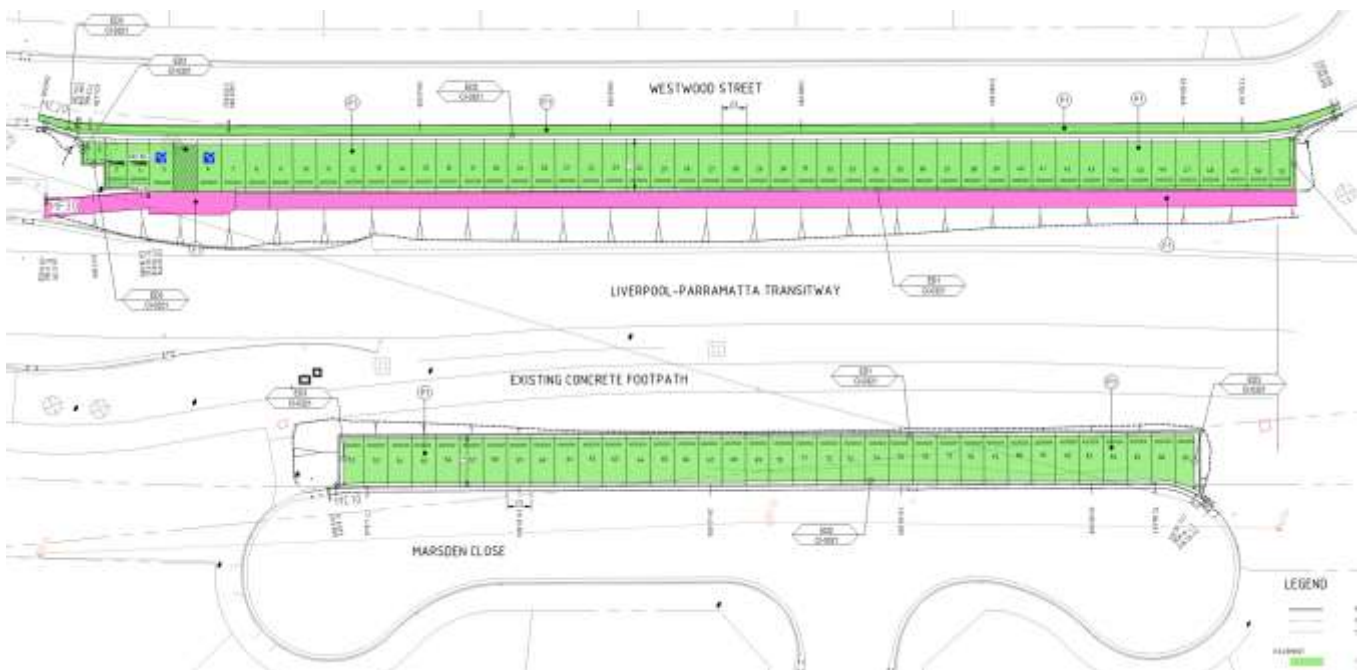
COMMUNITY NOTIFICATION

MARCH 2019

The Transport Access Program is a NSW Government initiative to provide a better experience for public transport customers by delivering accessible, modern, secure and integrated transport infrastructure.

### Project Overview

The NSW Government is improving access to the Orphan School T-Way Bus Stop at Prairiewood. Currently, informal parallel parking occurs on Westwood Street and Marsden Close, with around 35 cars able to park in this location. Once this project is delivered, the number of available spaces near the T-Way will increase to around 85 spaces.



*Indicative layout of car parks on Westwood Street and Marsden Close*

## Project Update

The construction compound set up was completed in late January 2019, and earthworks commenced shortly after in early February. The works are currently on program and it is expected that the carparks will be **open to the public by June 2019**.

The initial construction phase has seen the completion of the earthworks, subsoil drainage, stormwater drainage and portions of the pavement. Kerb and pavement works are expected to be well underway by mid-March, with asphalt works commencing in early April 2019.

## Construction impacts

### Working Hours

Construction works will be carried out within the standard working hours of **Monday to Friday 7am to 6pm** and **Saturday 8am to 1pm**. No construction work will be undertaken outside of these hours without prior approval and community notification. It is not anticipated that any works will be required to be undertaken outside of standard working hours on this project.

### Noise Mitigation Measures

There will be some noise associated with the continuing formalisation of the parking spaces. Every effort will be made to reduce the impact on residents via a combination of the following strategies:

- maximising the distance between noisy equipment and nearby residents, and where possible avoiding the simultaneous use of noisy equipment
- turning off any equipment or vehicles that are not being used
- ensuring breaks are taken between noisy works
- orienting equipment away from residences and noise sensitive areas
- completing loading and unloading away from residences and noise sensitive areas.

We apologise in advance for any inconvenience this work may cause and appreciate the patience of residents and road users.

## Keeping the community informed

If you have any questions regarding the project or construction impacts, please contact the Project Infoline on **1800 684 490**, or email [projects@transport.nsw.gov.au](mailto:projects@transport.nsw.gov.au).

Information and project updates can be found at [www.transport.nsw.gov.au/prairiewood](http://www.transport.nsw.gov.au/prairiewood)



This document contains important information about public transport projects in your area. If you require the services of an interpreter, please contact the Translating and Interpreting Service on **131 450** and ask them to call the Transport Projects Division on **(02) 9200 0200**. The interpreter will then assist you with translation.

### Vietnamese

Tài liệu này có các thông tin quan trọng về các dự án giao thông công cộng trong khu vực của quý vị. Nếu quý vị cần sự giúp đỡ của thông dịch viên, xin vui lòng liên hệ với Dịch vụ Thông Phiên Dịch ở số điện thoại 131 450 và yêu cầu họ gọi cho Cơ quan Giao thông Tiểu bang NSW ở số điện thoại (02) 9200 0200. Sau đó thông dịch viên sẽ giúp thông dịch cho quý vị.

### Spanish

El presente documento contiene información importante sobre proyectos de transporte público en su área. Si requiere los servicios de un intérprete, llame al Translating and Interpreting Service al 131 450 y pídale que llamen a Transport Projects, teléfono: (02) 9200 0200. Luego el intérprete le ayudará con la traducción.

### Arabic

تتضمن هذه الوثيقة معلومات عن مشاريع لنقل العلم في منطقتكم . إذا كنتم بحاجة الى خدمت مترجم الرجاء الإتصال بخدمة الترجمة الشفهية والخطية على رقم 131 450 واطلبوا منهم ان يتصلوا بمصلحة المواصلات في نيو ساوث ويلز على رقم (02) 9200 0200 . عنها يساعدكم المترجم بالترجمة

### Italian

Il presente documento contiene importanti informazioni sulle iniziative nel campo del trasporto pubblico nella vostra zona. Se desiderate i servizi di un interprete, contattate il Servizio traduzioni e interpreti al numero 131 450 indicando di voler parlare con Transport Projects al numero (02) 9200 0200. L'interprete vi aiuterà a condurre la conversazione telefonica.

Delivered by Christie Civil