



Sutherland to Cronulla Active Transport Link

COMMUNITY NOTIFICATION

June 2019

Stage 1 Sutherland to Kirrawee

The Sutherland to Cronulla Active Transport Link (SCATL) is a pedestrian and bicycle path between Sutherland and Cronulla to help make walking and bike riding a more convenient, safer and enjoyable transport option.

Stage 1 Sutherland to Kirrawee will connect key destinations such as transport interchanges, schools, residential areas and business precincts.

Construction of Stage 1 is underway, and work will be completed progressively between Sutherland and Kirrawee. Stage 1 will be opened as each area is completed with bike riders and pedestrians able to use all of Stage 1 by early 2020.

President Avenue, Sutherland

Work will start on **Monday 24 June 2019** on President Avenue in two sections. We will be working between Eton Street and Merton Street, and Merton Street and Glencoe Street. The work involves tree removal and continuing the construction of the new pedestrian and bicycle crossing.

Utilities investigations will occur concurrently along President Avenue, between Eton Street and Acacia Road. These investigations will be carried out during the standard construction hours to minimise impacts to the community.

The work on President Avenue will take around six weeks, weather permitting. Pedestrian access will be maintained at all times, with traffic control present when work is in progress. Please see information and the map overleaf for more detail about the work.

Changes to parking on President Avenue

Approximately 12 parking spaces between Eton Street and Glencoe Street, will be temporarily unavailable from **7am, Monday 24 June** until **Saturday 3 August 2019**, to allow work to be completed safely.

Standard working hours

Majority of construction work is scheduled to occur during standard construction hours, which are **7am to 6pm Monday to Friday**, and **8am to 1pm on Saturdays**.

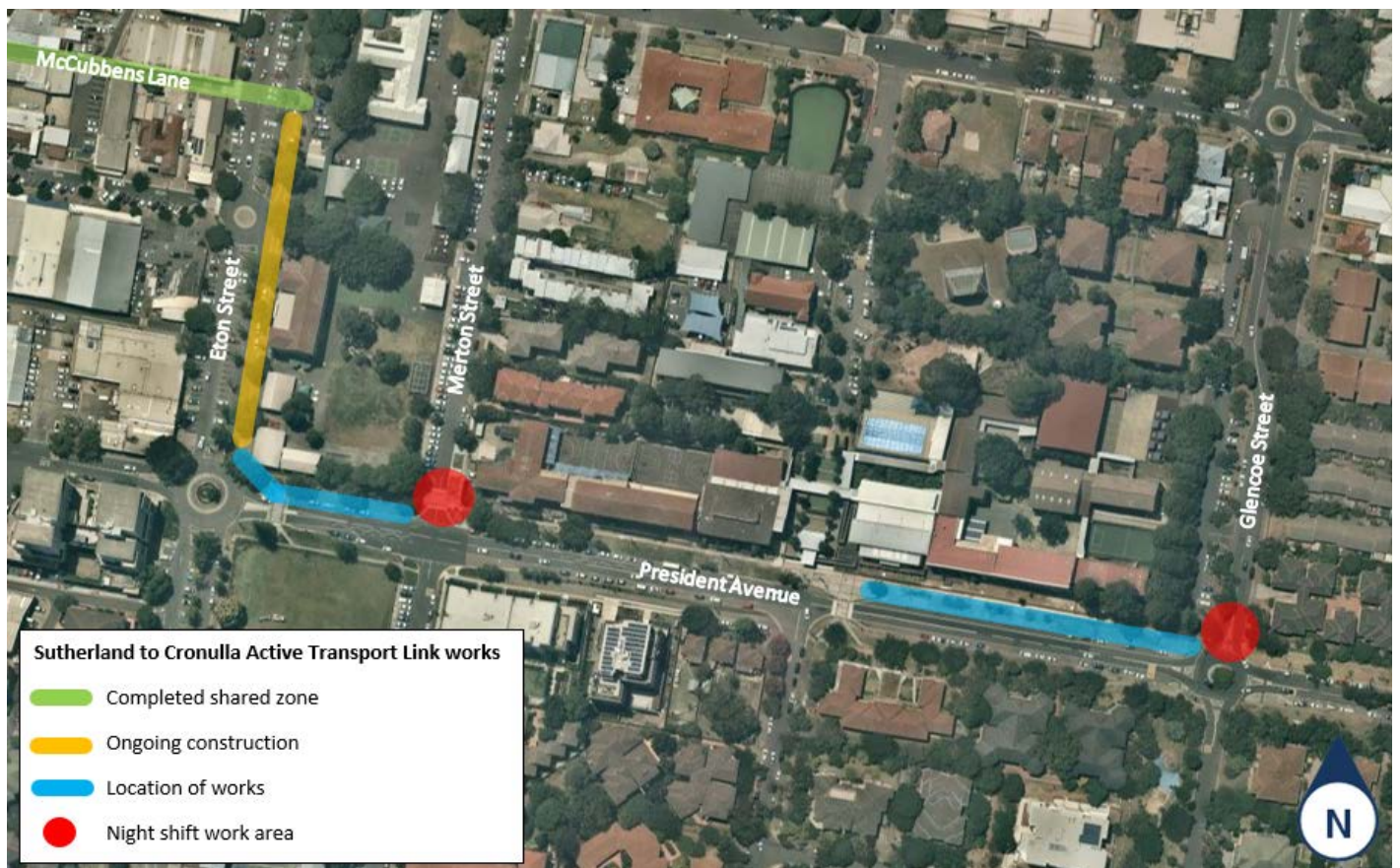
Night work

Some work is required outside of these hours to minimise impacts on local traffic and to improve the safety of pedestrians and workers. Night work is scheduled **between the hours of 6pm and 7am on Monday 24 and Friday 28 June 2019** (weather permitting).

This work may be noisy at times, as it includes truck movements, saw cutting of the road, jack hammering, concreting and asphaltting. The team will do everything possible to minimise impacts on the community, by completing noisier works as early as possible, switching off equipment when it is not being used, placing equipment as far away from properties as possible, and monitoring our work activities to ensure noise levels are being managed effectively.

Traffic changes

There will be temporary traffic changes during our work hours to ensure the work zone is safe. Lane closures and detours will be in place during night work on Merton Street and Glencoe Street, and may affect travel times. Please keep to the speed limits and follow signs and traffic controllers' directions.



Keeping the community informed

We will keep the community informed of upcoming work via regular notifications and updates on our website. If you would like to speak to the project team about this work, please contact us on 1800 684 490 or email projects@transport.nsw.gov.au.



This document contains important information about public transport projects in your area. If you require the services of an interpreter, please contact the Translating and Interpreting Service on **131 450** and ask them to call Transport for NSW on **(02) 9200 0200**. The interpreter will then assist you with translation.

For more information call **1800 684 490**,
Email projects@transport.nsw.gov.au or visit transport.nsw.gov.au/projects
For urgent enquiries or complaints regarding construction activities, please call 24 hours **1800 775 465**