



Power Supply Upgrade Program

Ultimo

COMMUNITY NOTIFICATION

MARCH - APRIL 2019

Transport for NSW is upgrading electrical infrastructure as part of the Power Supply Upgrade Program, which is designed to meet expected power requirements for Sydney's future rail network and new fleet of air-conditioned trains.

Construction activities taking place in your area

We will be working in Mary Ann Street, Ultimo to excavate and perform maintenance work on a high voltage power cable that is located under the road. This power cable is part of the network that supplies power to the rail corridor and rail substations.

What will you notice

On **Friday 29 March, between 7am and 6pm**, a small crew will commence the process of identifying the services under the road using an electronic hand held device. Traffic control will be in place to safely direct traffic and pedestrians around the workers. Please follow directions and proceed carefully. **Access to properties and through traffic will be maintained although short delays may be experienced.**

Temporary lane closure

From Monday 1 to Thursday 18 April, between 7am and 6pm, a temporary lane closure will be in place along the south side of Mary Ann Street to allow excavation within the roadway. **Street parking will be temporarily removed during the day** to enable through traffic to be maintained around the excavation. Access to properties will also be maintained although delays may be experienced.

See map over the page for details.

Construction equipment

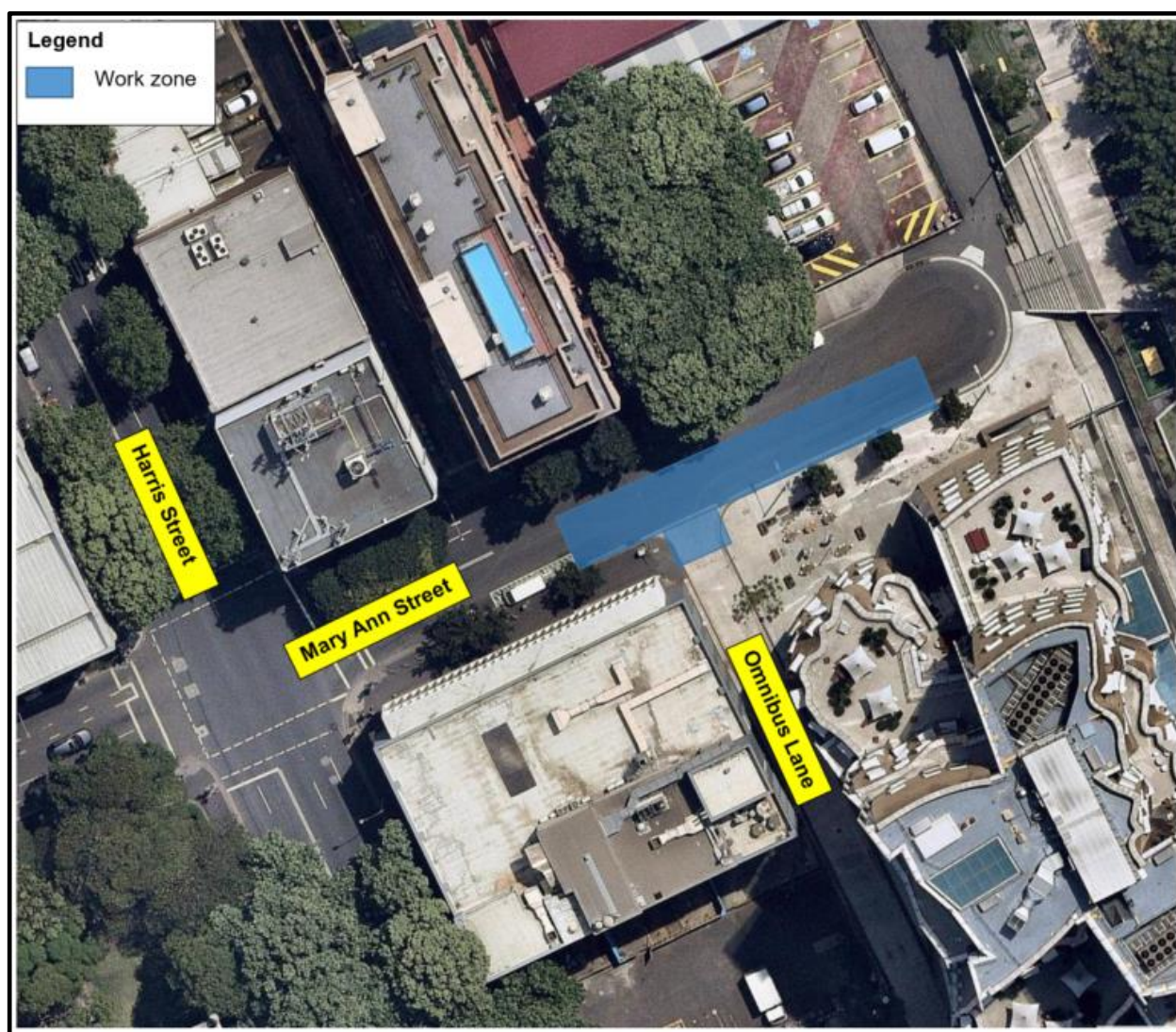
Equipment to be used during the work activities includes a vacuum truck, excavator, tip trucks, concrete saw, jack hammer and various hand and power tools.

Transport for NSW is committed to minimising noise impacts on the community. We switch off equipment when it is not being used, place equipment as far away from properties as possible and monitor our work activities to make sure noise levels are being managed efficiently.

Keeping the community informed

If you would like to speak with the project team about these works, please contact us through the details provided below. Thank you for your assistance during this work.

Map of work area



This document contains important information about public transport projects in your area. If you require the services of an interpreter, please contact the Translating and Interpreting Service on **131 450** and ask them to call Transport for NSW on **(02) 9200 0200**. The interpreter will then assist you with translation.

For more information call **1800 684 490**,
Email projects@transport.nsw.gov.au or visit transport.nsw.gov.au/projects
For urgent enquiries or complaints regarding construction activities, please call 24 hours **1800 775 465**