



Transport Access Program

Waratah Station Upgrade

Project Update

15 October 2019

Upcoming night work

From **11pm Sunday 20 October** until **4am Monday 21 October 2019** out of hours work will be undertaken to place concrete lift shaft structures on the island platform at Waratah Station, weather permitting.

Equipment to be used will include a concrete boom pump, concrete truck, temporary lighting, power and hand tools.

The construction plant will be positioned as far away from residential areas as possible, with regular respite periods for any noisy work.

To ensure the safety of our customers and staff, this work will be completed during a scheduled ARTC track work night when **no passenger train services will be operating**.

Pedestrian and traffic detours

To safely operate the concrete boom pump, some traffic and pedestrian access changes will be in place. Traffic control and signage will be in place to assist pedestrians and motorists with these temporary changes.

As there are **no train services operating**, the **pedestrian bridge will be closed** to pedestrians to create a safe work zone. Detour by walking around the station precinct along Railway Terrace/Platt Street.

Keeping the community informed

The community will be kept informed with regular project notifications and information via the project website found at: www.transport.nsw.gov.au/projects/current-projects/waratah-station-upgrade.

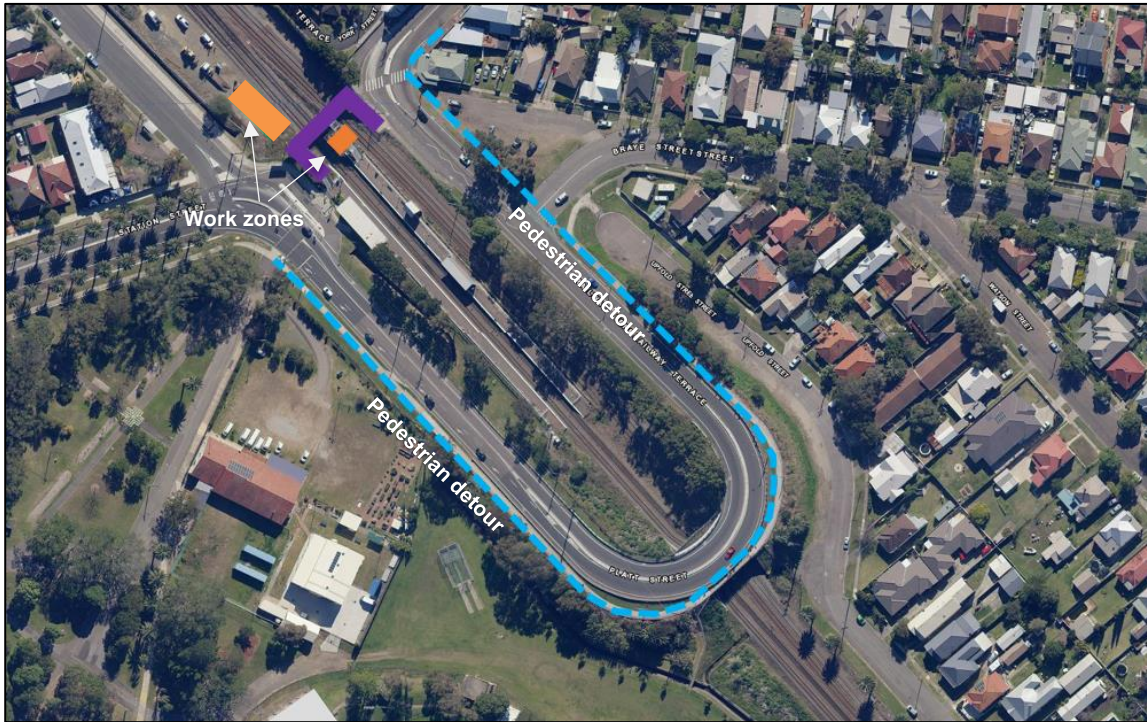
For further information on the project, please call the Project Infoline on **1800 684 490** or email projects@transport.nsw.gov.au.



This document contains important information about public transport projects in your area. If you require the services of an interpreter, please contact the Translating and Interpreting Service on **131 450** and ask them to call Transport for NSW on **(02) 9200 0200**. The interpreter will then assist you with translation.

For more information call 1800 684 490.
Email projects@transport.nsw.gov.au or
visit www.transport.nsw.gov.au/projects/current-projects/waratah-station-upgrade.
For urgent enquiries or complaints regarding construction activities, please call 24 hours 1800 775 465

Changes to Waratah Station pedestrian access – 20/21 October night work



Map legend:

Orange – Work zones during works 20-21 October.

Blue – Pedestrian detour during works occurring 20-21 October.

Purple – Pedestrian bridge closed during works occurring 20-21 October.

Arabic

تتضمن هذه الوثيقة معلومات عن مشاريع النقل العام في منطقتكم. إذا كنتم بحاجة إلى خدمات مترجم، الرجاء الإتصال بخدمة الترجمة الشفهية والخطية على رقم 131 450 واطلبوا منهم ان يتصلوا بمصلحة المواصلات في نيو ساوث ويلز على رقم 9200 0200 (02). عندها يساعدكم المترجم بالترجمة.

Hindi

इस दस्तावेज में आपके इलाके के सार्वजनिक परिवहन परियोजनाओं के बारे में महत्वपूर्ण जानकारी शामिल है। यदि आपको दुर्भाग्य से की सेवा की आवश्यकता है तो कृपया 131 450 पर टैलेटिंग एड इटर्स टिंग सर्विस से संपर्क करें और उनसे (02) 9200 0200 पर टैलेटिंग एड इटर्स से सहायता लेंगे।

इसलिए कहें। उसके बाद दुर्भाग्य से आपको अनुवाद करने में सहायता देंगे।

Filipino

Ang dokumentong ito ay naglalaman ng mahalagang impormasyon tungkol sa mga proyektong transportasyon na pampubliko sa inyong lugar. Kung kailangan ninyo ng serbisyo ng tagapagpaliwanag, makipag-ugnayan po sa Serbisyo ng Pagsasalin at Pagpapaliwanag sa 131 450 at hilingan silang tawagan ang Transportasyon para sa NSW sa (02) 9200 0200. Tutulungan kayo ng tagapagpaliwanag sa pagsasalin.

Tagalog

Ang dokumentong ito ay naglalaman ng mga mahahalagang impormasyon tungkol sa mga proyekto sa pampublikong transportasyon ng inyong lugar.

Kung kayo ay nangangailangan ng serbisyo ng isang interpreter, tawagan po lamang ang Translating and Interpreting Service sa 131 450 at pakiusapan silang tumawag sa "Transport for NSW" sa (02) 9200 0200.

Ang interpreter ay tutulungan kayo sa pagsasalin-wika.

Delivered by Gartner Rose

For more information call **1800 684 490**.
Email projects@transport.nsw.gov.au or
visit www.transport.nsw.gov.au/projects/current-projects/waratah-station-upgrade.
For urgent enquiries or complaints regarding construction activities, please call 24 hours **1800 775 465**