

Transport Access Program

Waratah Station Upgrade

Project Update

July 2019



Transport Access Program

The Waratah Station Upgrade is being delivered as part of the Transport Access Program, a NSW Government initiative to provide a better experience for public transport customers by delivering accessible, modern, secure and integrated transport infrastructure.

Project overview

Transport for NSW is upgrading Waratah Station to make it easier for everyone to access, including people with a disability, limited mobility, parents/carers with prams and customers with luggage.

Upcoming weekend work

We have work coming up that will be undertaken outside of standard work hours. To ensure the safety of our customers and staff, this work will be completed during a scheduled Sydney Trains track work weekend when **no train services will be operating**.

From **6am Saturday 13 July** until **10pm Sunday 14 July 2019** work will be undertaken to construct external station lift shafts at both Platt Street and Railway Terrace sides of Waratah Station, weather permitting.

Construction activities include:

- using piling drill rigs to construct concrete piles and foundations for lift shafts at both sides of the station

- using equipment to construct lift shaft on Platform 1
- vegetation removal (Railway Terrace side) to enable lift shaft construction.

Equipment used includes a mobile crane, piling rigs, concrete truck, temporary lighting, generators, power and hand tools.

Pedestrian and traffic detours

To safely operate large mobile crane and piling rigs, some traffic and pedestrian access changes will be in place during the work. Traffic control and signage will be in place to assist pedestrians and motorists with these temporary changes.

As there are **no train services operating**, the **pedestrian bridge will be closed** to pedestrians to create a safe work zone. Detour by walking around the station precinct along Railway Terrace/Platt Street. Rail replacement buses will be operating from Platt Street.

For information regarding rail replacement buses during track work weekends, please visit transportnsw.info or phone 131 500.

Construction hours

Work will be carried out continuously from **6am Saturday 13 July** until **10pm Sunday 14 July 2019**.

The construction plant will be positioned as far away from residential areas as possible, with regular respite periods for any noisy works.

Ongoing July work

Construction activities continue in July including:

- concrete work for the lift shaft at Platform 1 (within scaffolding)
- concrete work for the two lift shafts, one on Platt Street and one on Railway Terrace.

Equipment used includes piling drill rig, jack hammer, concrete truck, vacuum truck and surveying equipment.

Standard construction hours

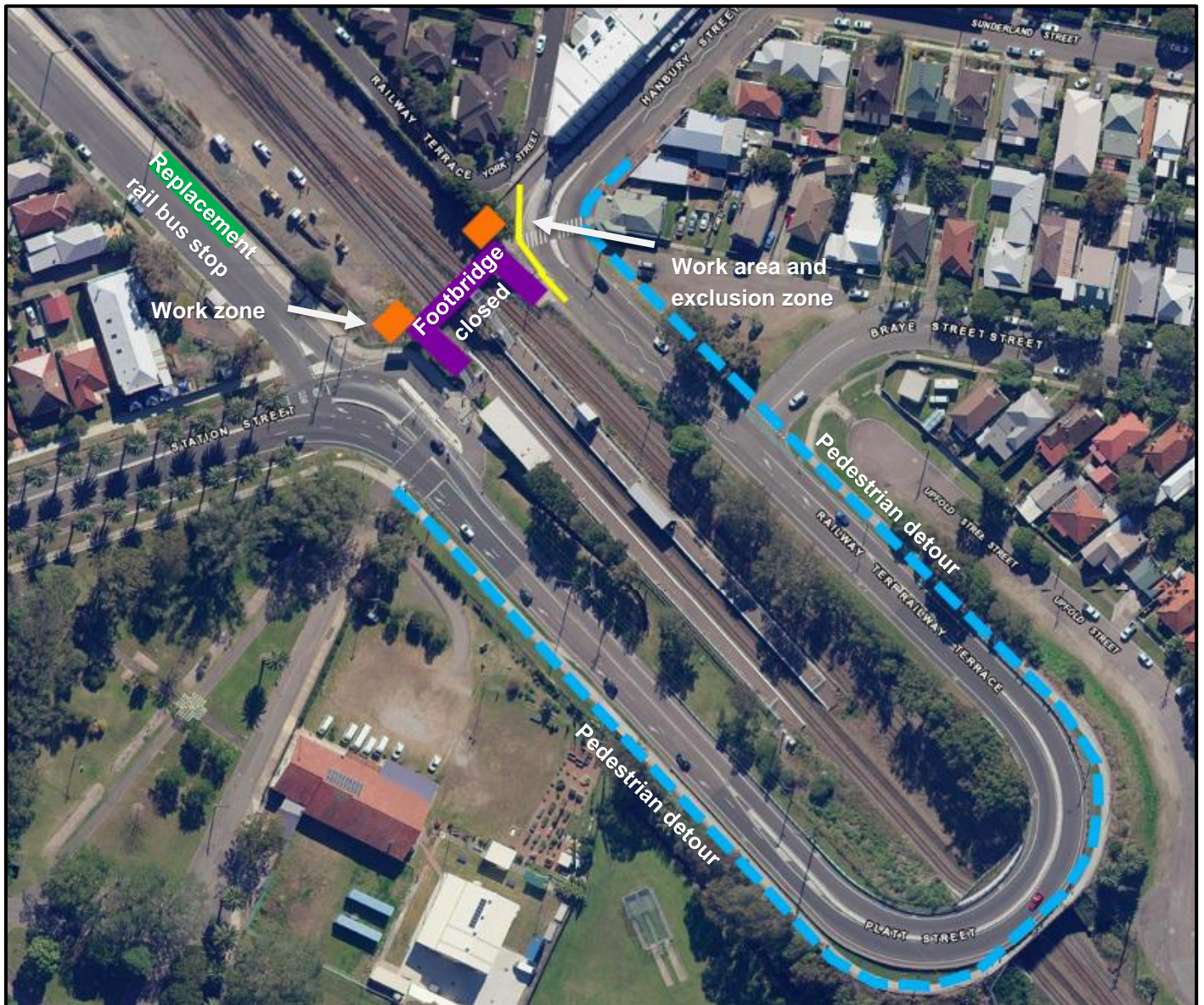
Standard working hours are **7am to 6pm, Monday to Friday**, and **8am to 1pm, Saturday**. Notifications of any works occurring outside of these standard hours will be given prior to works commencing.

Keeping the community informed

The community will be kept informed with regular project notifications and information via the project website found at: www.transport.nsw.gov.au/projects/current-projects/waratah-station-upgrade.

For further information on the project, please call the Project Infoline on **1800 684 490** or email projects@transport.nsw.gov.au.

Changes to Waratah Station pedestrian access – July weekend work



Map legend:

Orange/yellow – Work zones (orange) and exclusion buffer zones (yellow) with partial lane closure on Railway Terrace (near Hanbury Street) during works 13-14 July.

Blue – Pedestrian detour during works occurring 13-14 July.

Purple – Pedestrian bridge closed during works occurring 13-14 July.

Green – Rail replacement bus stop on Platt Street during weekend works 13-14 July.



This document contains important information about public transport projects in your area. If you require the services of an interpreter, please contact the Translating and Interpreting Service on **131 450** and ask them to call Transport for NSW on **(02) 9200 0200**. The interpreter will then assist you with translation.

Arabic

تتضمن هذه الوثيقة معلومات عن مشاريع النقل العام في منطقتكم. إذا كنتم بحاجة إلى خدمات مترجم، الرجاء الإتصال بخدمة الترجمة الشفهية والخطية على رقم 131 450 واطلبوا منهم ان يتصلوا بمصلحة المواصلات في نيو ساوث ويلز على رقم (02) 9200 0200. عندها يساعدكم المترجم بالترجمة.

Hindi

इस दतावेज म आपके इलाके के सावर्जनिक-परवहन परियोजनाओं के बारे म महत्वपूर्ण जानकारी सम्मिलित है। यदि आपको दुभाषण की सेवा की आवश्यकता है तो कृपया 131 450 पर टैलेफोन टुंग एड इटर्स टुंग से सम्पर्क कर और उनसे (02) 9200 0200 पर टैपोटर्स एजेंस को फोन करने के लिए कह। उसके बाद दुभाषण आपको अनुवाद करने म सहायता देगा।

Filipino

Ang dokumentong ito ay naglalaman ng mahalagang impormasyon tungkol sa mga proyektong transportasyon na pampubliko sa inyong lugar. Kung kailangan ninyo ng serbisyo ng tagapagpaliwanag, makipag-ugnayan po sa Serbisyo ng Pagsasalin at Pagpapaliwanag sa 131 450 at hilingan silang tawagan ang Transportasyon para sa NSW sa (02) 9200 0200. Tutulungan kayo ng tagapagpaliwanag sa pagsasalin.

Tagalog

Ang dokumentong ito ay naglalaman ng mga mahahalagang impormasyon tungkol sa mga proyekto sa pampublikong transportasyon ng inyong lugar.

Kung kayo ay nangangailangan ng serbisyo ng isang interpreter, tawagan po lamang ang Translating and Interpreting Service sa 131 450 at pakiusapan silang tumawag sa "Transport for NSW" sa (02) 9200 0200.

Ang interpreter ay tutulungan kayo sa pagsasalin-wika.

Delivered by Gartner Rose