



Transport Access Program

Birrong Station Upgrade

Project Update

August 2020



Transport for NSW is upgrading Birrong Station to make it easier for everyone to access, including people with a disability or limited mobility, parents/carers with prams, and customers with luggage.

Site establishment commenced in July and will continue throughout August. Upcoming activities include:

- Site establishment and office set up
- Surveying and investigation work
- Installing temporary hoarding around the platform
- Relocating and installing new services
- Starting road work at the new kiss and ride on Rodd Street
- Construction on the new station entry.

Equipment to be used includes surveying equipment, vacuum trucks, mini loaders, concrete and haulage trucks, excavators, cranes and hand tools.

For more information call 1800 684 490,

Email projects@transport.nsw.gov.au or visit transport.nsw.gov.au/birrong

For urgent enquiries or complaints regarding construction activities, please call 24 hours 1800 775 465.

Weekend work: Friday 7 to Monday 10 August 2020

For the safety of our staff and customers, work will take place during a scheduled Sydney Trains track work weekend, when trains don't run and the station is closed. **The work will be carried out continuously from 6pm Friday 7 August to 12am Monday 10 August 2020.**

The work will include:

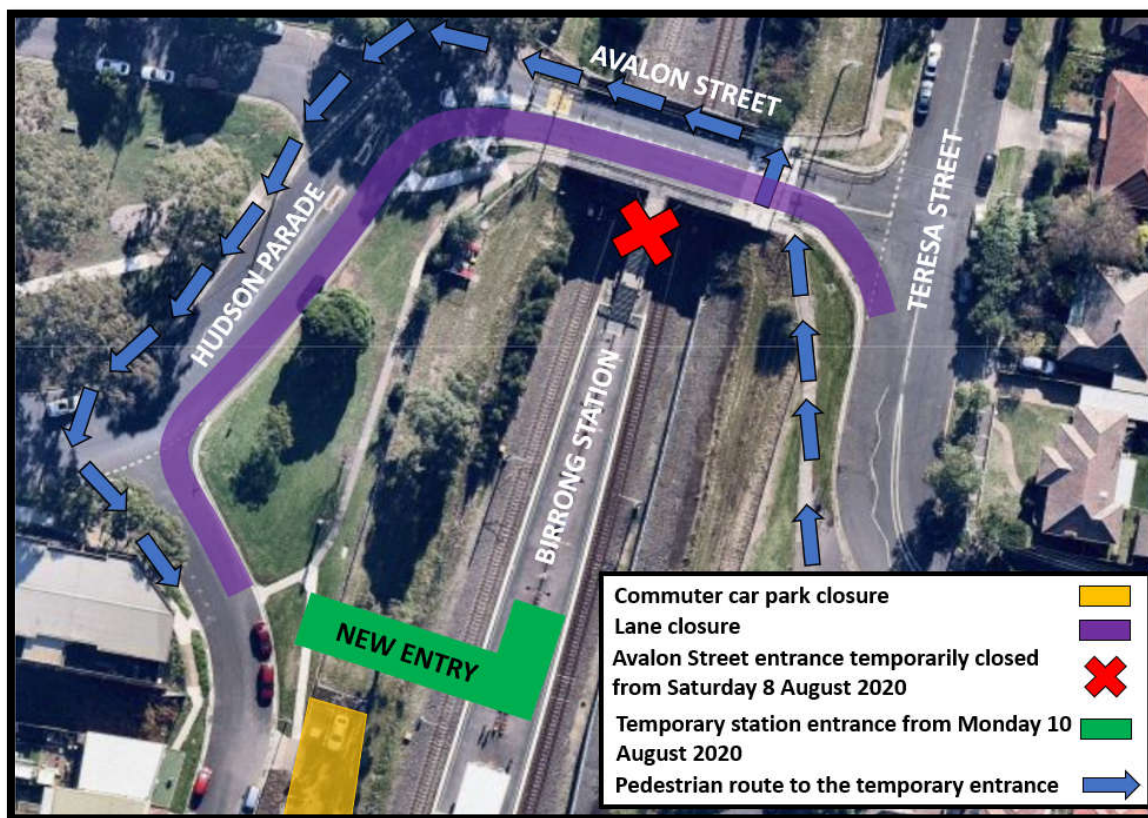
- Installation of a temporary footbridge by crane off Hudson Parade
- Installation of platform hoarding
- Site establishment work, CCTV and lighting installation
- Demolition of the existing stairs from Avalon Street
- Services investigation and surveying
- Delivery of materials
- Delivery and installation of concrete barriers and screens.

The work will involve an excavator, concrete saw, cranes, rock breaker, trucks, lighting towers, elevated work platforms, and hand tools.

This work will be noisy at times. However, wherever possible measures to reduce noise will be implemented including turning equipment off when not in use, positioning equipment as far away from residences as possible, monitoring noise, using non-tonal reversing beepers and stopping work for respite periods.

From 6pm Friday 7 July to 12am Monday 10 July, **a temporary lane closure will be in place from Hudson Parade over Avalon Street Bridge to Teresa Street** (please see the map below). Please allow extra travel time and follow the instructions of traffic control staff and signage while the changes are in place.

Throughout this work, the commuter car park at the station will be closed. Please visit www.transportnsw.info or call **131 500** for information about replacement buses during this time.



Map of pedestrian and motorist changes from 7 to 10 August 2020

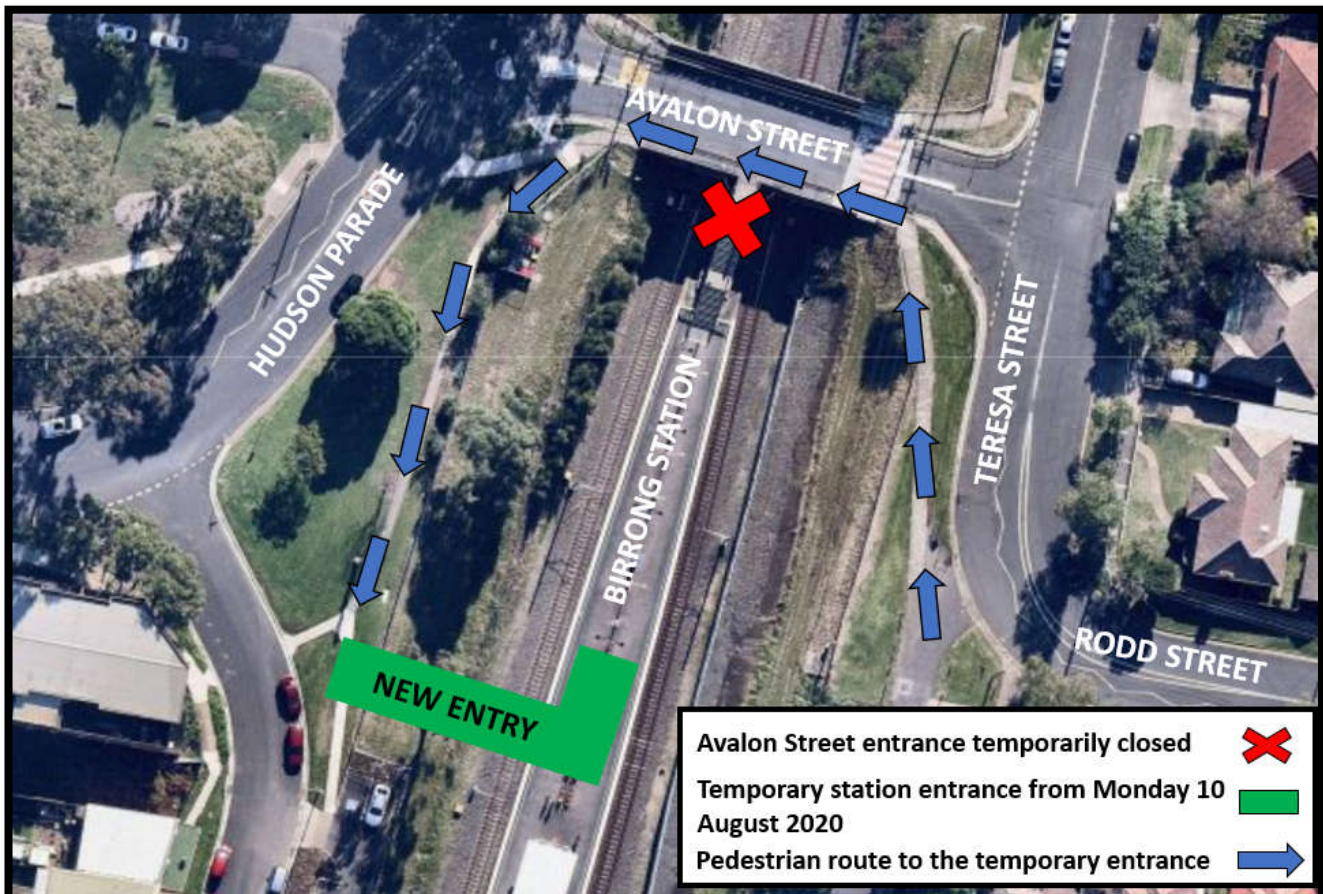
Access to Birrong Station is changing

From Saturday 8 August 2020 to mid 2021, the Avalon Street entrance to Birrong Station will close while we construct a new station entry.

To carry out this work safely and efficiently, a temporary pedestrian footbridge will be installed off Hudson Parade, next to the commuter car park. **To access the station, customers will use the temporary footbridge while the new entry is constructed.**

Signage will direct pedestrians to the temporary entry. For more information, please see the map below.

We apologise for any inconvenience and thank you for your patience while we complete this important work.



Map of pedestrian detour to station entry from Monday 10 August 2020

Construction hours

Standard construction hours are **7am to 6pm Monday to Friday** and **8am to 1pm on Saturdays**.

For the safety of staff, rail customers and the community, some work will be completed outside standard construction hours. Nearby residents and businesses will be notified before out of hours work takes place.

Keep in touch

We will continue to keep the community informed with regular project notifications and frequent online updates published to the project website www.transport.nsw.gov.au/birrong.

If you would like to be added to the project distribution list, or for more information about the Birrong Station Upgrade, please contact us on **1800 684 490** or email projects@transport.nsw.gov.au.

For all urgent enquiries or complaints regarding construction activities, please call our 24-hour Construction Response Line on **1800 775 465**.

Chinese

这份文件包含你所在地区公共交通工程项目的重要信息。如果你需要传译服务，请致电翻译与传译服务机构，电话 131 450，要求他们为你接通交通部 (Transport for NSW)，电话是 (02) 9200 0200。传译员会为你做翻译。

Arabic

تتضمن هذه الوثيقة معلومات عن مشاريع النقل العام في منطقتكم . إذا كنتم بحاجة الى خدمات مترجم، الرجاء الإتصال بخدمة الترجمة الشفهية والخطية على رقم 450 131 واطلبوا منهم ان يتصلوا بمصلحة المواصلات في نيو ساوث ويلز على رقم (02) 9200 0200. عندها يساعدكم المترجم بالترجمة .

Vietnamese

Tài liệu này có các thông tin quan trọng về các dự án giao thông công cộng trong khu vực của quý vị. Nếu quý vị cần sự giúp đỡ của thông dịch viên, xin vui lòng liên hệ với Dịch vụ Thông Phiên Dịch ở số điện thoại 131 450 và yêu cầu họ gọi cho Cơ quan Giao thông Tiểu bang NSW ở số điện thoại (02) 9200 0200. Sau đó thông dịch viên sẽ giúp thông dịch cho quý vị



This document contains important information about public transport projects in your area. If you require the services of an interpreter, please contact the Translating and Interpreting Service on **131 450** and ask them to call Transport for NSW on **(02) 9200 0200**. The interpreter will then assist you with translation.