

A new dedicated left-hand turn into Cross Street from Pittwater Road opened to traffic in May. The new lane improves the flow of northbound traffic along Pittwater Road. Some follow up work is needed in August to complete the improvements.

### Work during August

Construction activities for the left-turn lane into Cross Street will involve traffic control signal works, line marking and minor repairs.

Work will occur at the **Cross Street** site located on the map overleaf during the following hours:

- **7am to 6pm Monday to Friday**
- **8am to 1pm Saturday**
- **two nights a week between 6pm to 5am**

Some of the work may be noisy. Measures will be implemented to reduce the impact of work, including turning off vehicles when not in use, completing noisy work early in the evening where possible, using barriers to reduce the noise and directing noise and lights away from residents.

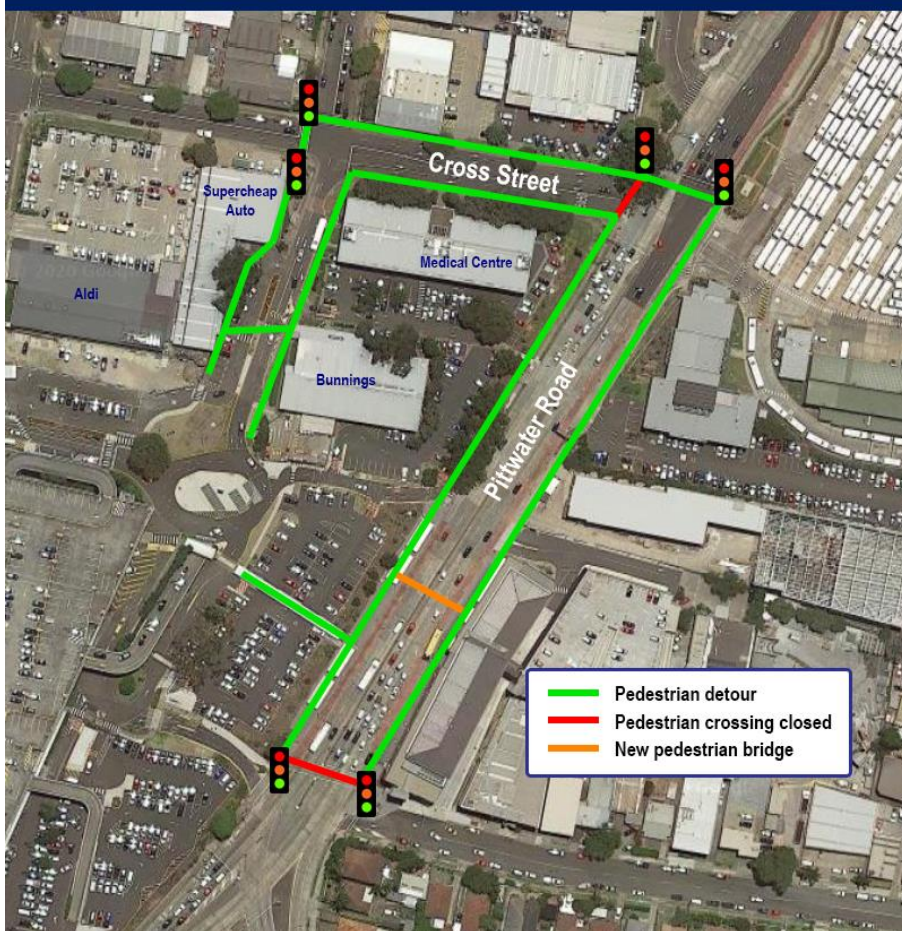
The pedestrian crossing at Cross Street will remain closed until the end of August to allow for the completion of the traffic control signal works and line marking. We apologise for any inconvenience. Please follow our pedestrian detour signs for alternate route options.

### Night work at Cross Street

Night work is required outside of standard hours to improve safety for workers, pedestrians and motorists and to minimise impacts to traffic. If a night shift is cancelled due to rain, we will aim to move it to another night within seven days.

Night work in August 2020						
Sun	Mon	Tue	Wed	Thurs	Fri	Sat
2	3	4	5	6	7	8
9	10	11	12	13	14	15
16	17	18	19	20	21	22
23	24	25	26	27	28	29
30	31					

## Location of works in Brookvale



### Contact information

For more information contact the Project Information Line on 1800 684 490 or email [projects@transport.nsw.gov.au](mailto:projects@transport.nsw.gov.au).



This document contains important information about public transport projects in your area. If you require the services of an interpreter, please contact the Translating and Interpreting Service on 131 450 and ask them to call Transport for NSW on (02) 9200 0200. The interpreter will then assist you with translation.