

The NSW Government is delivering improved public transport between the Northern Beaches, Lower North Shore and the Sydney CBD, including an integrated program of service and road upgrades.

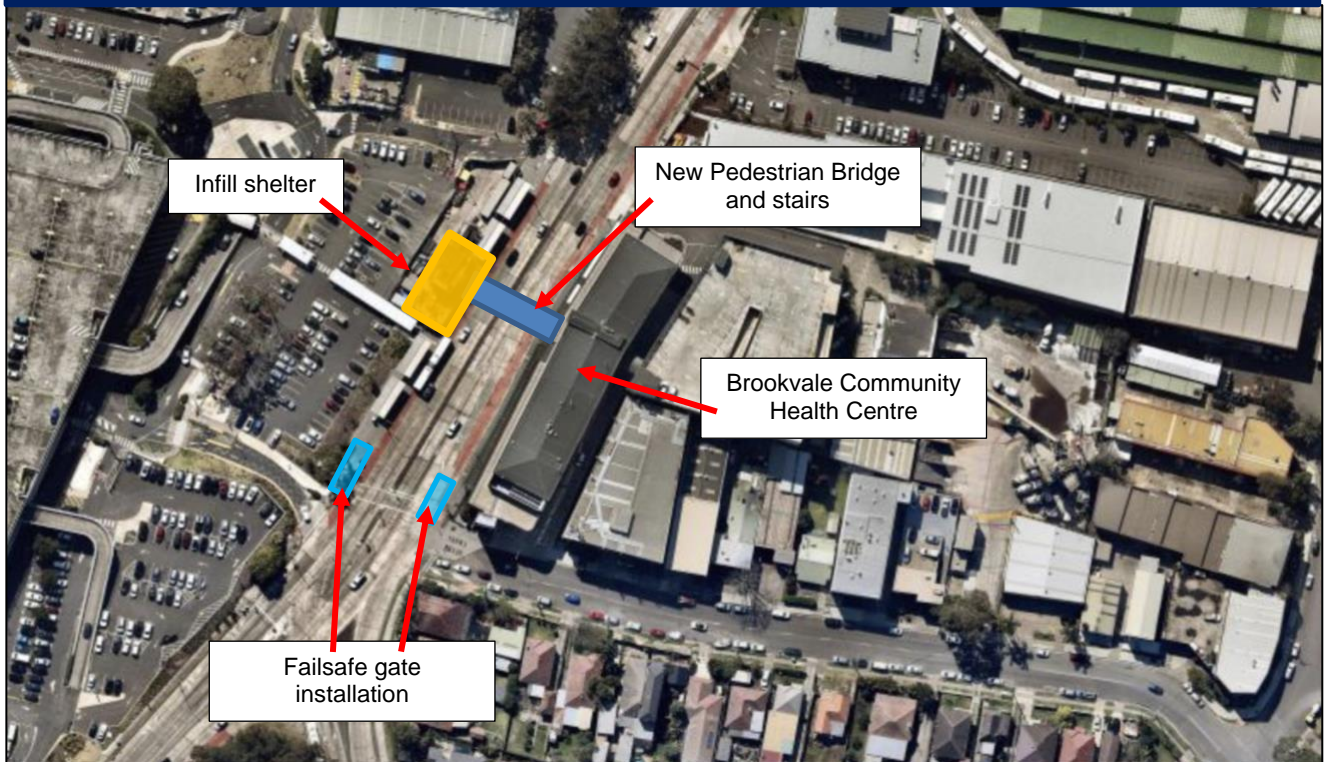
Further to our January monthly notification, construction works will commence to install new 'power-sliding' (failsafe) gates and finishing works to complete the the new infill bus shelter at the northbound bus stops. These works will take place on **Wednesday 15 to Thursday 16 January** and **Wednesday 29 to Thursday 30 January** between **8pm and 6am**.

Activities include:

- installation of failsafe gates on the northbound and southbound side of Pittwater Road. The works will involve saw cutting of the concrete footpath, excavation for pipe laying and concreting works
- finishing works for the new infill bus shelter at the northbound bus stops. The works will involve the use of hand tools

For the safety of motorists, pedestrians and workers this work will be done at night and is weather dependent. Traffic control will be in place during this time. You may also experience some noise impacts during this work.

## Location of works in Brookvale



For more information on this work or the Northern Beaches B-Line Program please contact us

- phone **1800 048 751** (24 hours)
- email [projects@transport.nsw.gov.au](mailto:projects@transport.nsw.gov.au)
- visit [b-line.transport.nsw.gov.au](http://b-line.transport.nsw.gov.au)
- For the latest traffic updates phone 132 701, or download Live Traffic NSW App.



This document contains important information about public transport projects in your area. If you require the services of an interpreter, please contact the Translating and Interpreting Service on 131 450 and ask them to call Transport for NSW on 02) 9200 0200 the interpreter will then assist you with translation.